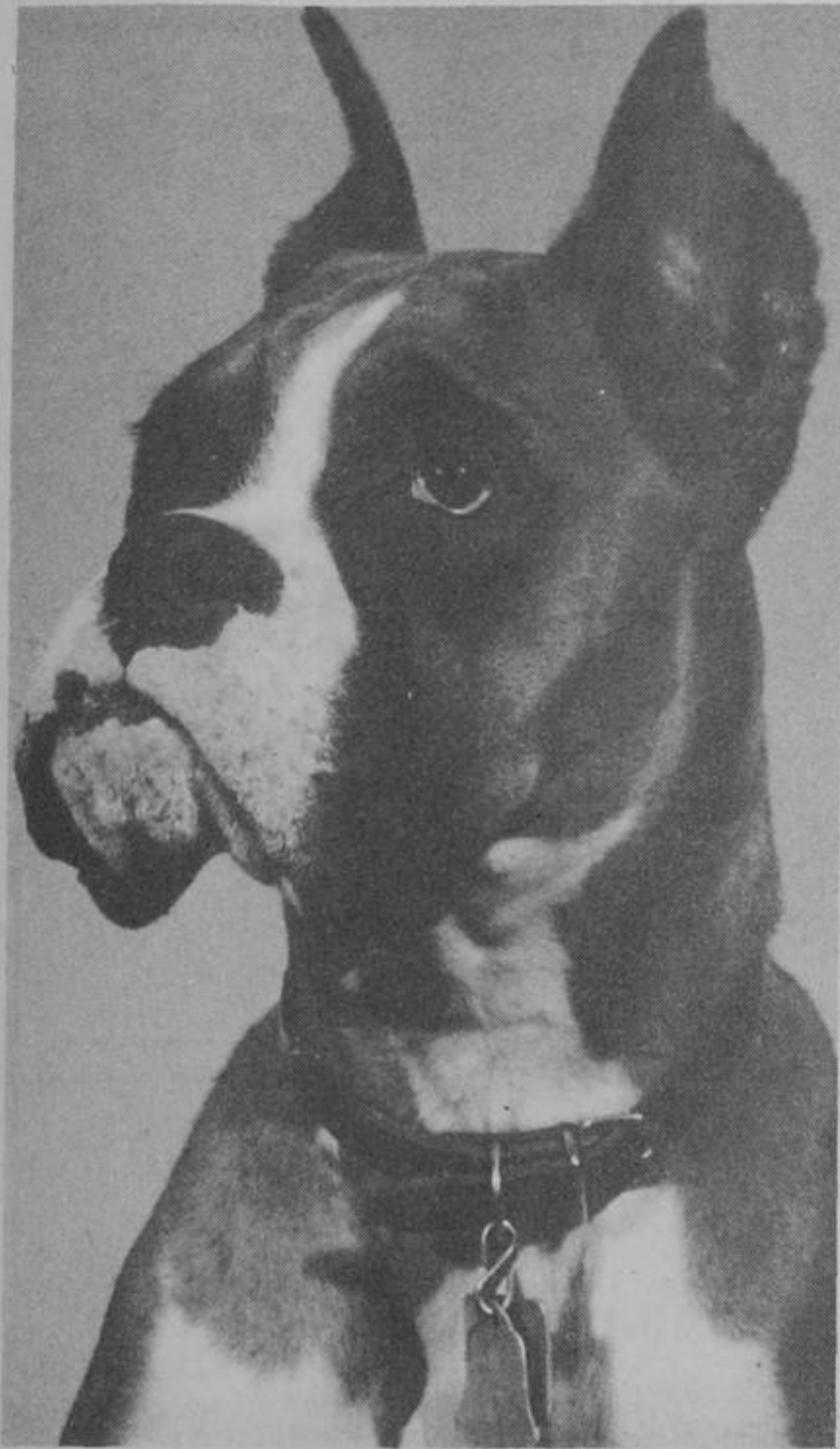


Nice News



First YCH canine patient

My name is Lady. I was the first canine patient at York Central Hospital.

It all happened during the April 3 snowstorm when I was riding in a car with my family, Irene and George Saunders of RR 2 Brechin. The car was involved in an accident.

Irene and I ended up in the emergency ward at York Central Hospital.

After I saw she was getting the best possible care, I gladly accepted the offer of a place to lie down and rest in a driver's room. George remained at the scene of the accident.

You can imagine the happy reunion of the three of us at the hospital with its efficient and friendly staff.

And that isn't all the story.

Since it was still storming and roads were drifting in as fast as they were opened, there was no chance of getting any form of transportation.

All three of us were made comfortable for an overnight stay.

Needless to say we are all very grateful to the kind staff and to the people of that area which have made it possible to have such an efficient hospital when needed by the traveller as well as by the residents.

With many thanks,
LADY

Toronto Waldorf School open house is on May 9

The Toronto Waldorf School, 9100 Bathurst Street, is holding its annual open house and exhibition May 9 from 7:30 to 9:30 pm and May 10 from 10 am to 4 pm.

The school now houses 225 children in pre-school to grade eight classes but when completed in four or five years will offer a unified school from kindergarten to high school graduation.

The large building, featuring five-sided classrooms, changing angles of corners, large windows and sculptured roof overhang, nestles on the crest of a ravine surrounded by trees and meadows in the Town of Vaughan.

For the open house, displays of the children's work will give the visitor an immediate impression of the scope and vitality of the Waldorf curriculum.

A special display in the gymnasium will show the progression through the grades in geometry.

The faculty will be on hand to explain the program and philosophy of the school.

Color slides of children at work, photographed by Susan Samila, will be shown hourly.

The Toronto Waldorf School, founded in 1968, is one of more than 100 independent schools around the world based on the educational philosophy of Rudolf Steiner.

SPRING FASHION AT SPECIAL PRICES

PANTS \$10.00

pull-on, tailored, and our Stretch Denim Jeans, 100% Trevira Polyester, and blends, machine washable and dryable, sizes: 10 to 20

SKIRT \$10.00

4 Gores elasticized waistband and side zipper, assorted colours and designs, easy-to-care, sizes: 8 to 16

JACKET \$16.99

casual comfort, in easy-to-care fabrics, wide variety of colours and designs, sizes: 10 to 18

JACKET \$18.99

shirt jacket, with a pair of pants, an ideal suit, machine washable and dryable



WATCH HILL

Ready to Wear and Fabrics

1235 Bay St. Toronto, 921-6104
3347 Yonge St. Toronto, 484-0414
Woodbine & Hwy 7 902 Simcoe St. Markham, 495-0169 Oshawa, 579-1622

Store Hours: BAY — Mon. Tues. Wed. Sat. 9:30 to 6, Thurs. & Fri. 'til 9, YONGE — Mon. to Sat. 10 to 6, WOODBINE — Mon. to Fri. 9 to 9, Sat. 'til 6, Sun. 10 to 5, OSHAWA — Mon. to Fri. 10 to 9, Sat. 9 to 6.

161 Don Park Rd., Markham, Ont., Factory and Showroom (Wholesale only) 495-1007



White Rose

CRRAFTS AND NURSERIES

LANDSCAPE SALE



SAVE \$9 or MORE!

Nothing held back ... You can

choose from our entire selection of Junipers. Big bushy AMES JUNIPER reg. priced at \$16.90 MOUNTBATTEN JUNIPER reg. priced at \$12.90 Hardy BLUE DANUBE JUNIPER reg. priced at \$12.90 Spreading GOLD COAST ... MINT JULEP ... Stately SKYROCKET ... BLUE HAVEN Buy any 3 or more and pay \$3.00 less than the regular price!

Buy any 3 Junipers of your choice - Upright or Spreading varieties reg. priced \$10.00 and up and pay \$9.00 less than the regular cost.

SAVE \$3.00 MORE on every additional Juniper you buy.



SILVER MAPLE CLUMPS

Fast growing Silver Maple grown in clumps is a valuable landscape subject — attractive as a specimen tree on your front lawn — useful in providing privacy — excellent for windbreak.

6'-8' \$14.90; 8'-10' \$19.90;

Large Specimen Clumps \$49.00 and up

PEAT MOSS

To break down heavy clay — to improve sandy soil 4 cu. ft. bale

Special sale: \$4.25

WHITE BIRCH CLUMPS

Cultivated Birch trees produced to perfection for easy transplanting. They will grow into majestic glistening white clumps.

Triple Clumps 6'-8' \$19.90

Double Clumps 6'-8' \$14.90

Large Specimen trees from \$29.00 and up

GREEN CROSS GARDA I

Combination of liquid fungicide and systemic action insecticide is absorbed by the plant — rain won't wash it off. Will control Birch leaf miners — Maple gall. Recommended for all ornamental trees, shrubs and roses.

8 oz. \$2.98 16 oz. \$4.99



DUTCH GLADIOLAS

Top size bulbs in 15 choice varieties 10 for \$1.50 Mixed Gladiolas Economy size bulbs 24 for \$2.49



EXHIBITION DAHLIAS

Dutch grown quality bulbs — over 20 varieties to choose from — Plate size decorative type ... Exotic Cacti ... Delightful Dwarf types ... Pompoms ... Multiple bulb clumps Only 89c ea.



LILY OF THE VALLEY

For the shadiest corners where nothing else will grow — thrives in moist or dry location. Dutch grown florists strain provides fragrant glistening white bells. 10 for \$1.39



EXOTIC LILIES

Nothing easier to grow — lasts for years — never needs replanting. Blooms in summer when flowers are most appreciated. Famous Hybrid varieties SPECIOUSUM OLYMPIC GOLDEN SPLENDOUR ... etc. \$1.59 ea.



"How'd you like to be left holding this bag!"

May 15: Have you got the winning ticket?

May 15th, that's the first Wintario draw. And you could be a big winner. Of the grand prize of \$100,000, or \$10,000, or \$1000 or \$100. There's up to 1350 prizes the first draw alone. And tickets are just a dollar. So come on Ontario, play Wintario, the new Ontario lottery.



"I got my ticket, you got yers?"

wintario

we all win

MACRAME

The fun of creating Macrame planter hangers begins when you shop at White Rose. You will find your best buys here from Jute to original sand beads. We also have a beautiful selection of tropical plants and pots to enhance your planter.

JUTE 5 ply 210 feet — Red, rust, gold, brown moss. Regular \$3.79 Special \$3.49

WOODEN BEADS — natural, mahogany, tan, red. 24mm 12 for \$1.29 20 mm 12 for 89c

SAND BEADS Every bead different! Great for adding the original touch to your wall hanging or planter. 89c ea.

MACRAME INSTRUCTION BOOKS Detailed instructions and coloured pictures showing hundreds of ideas for wall hangings and planters. Macrame Hang Ups ... \$1.27 Macrame Designs ... \$1.27 Macrame Planters for Small spaces ... \$1.27 Macra Hang Ups ... \$1.95

MACRAME ACCESSORIES

D Rings ... 2 for 37c 36" leather thongs ... 39c ea. T pin ... 10 for 25c 14" Wooden Purse Handles ... \$2.98 pr. 12" Brown plastic purse handles ... \$1.98

BUCKLES — Clearance of buckles. Various sizes in wood and metal 1/2 regular price.



STRAWBERRIES

Certified virus-free stock Red Coat — Sparkle 10 for \$1.50; 30 for \$3.50; 50 for \$5.90 Everbearing Ozark Red 10 for \$2.50; 30 for \$6.90; 50 for \$10.90

RHUBARB New Valentine—the reddest of all strawberry rhubarbs—juicy—top quality \$1.49 ea; 3 for \$3.90

ASPARAGUS Plant it once and for years it will provide your table with delightful vegetables. 10 for \$2.50 50 for \$9.75

HYBRID BLUEBERRIES

Larger and sweeter than the native blueberry should be planted in soil enriched with peat moss. BLUECROP—BLUERAY—JERSEY—EARLY BLUE \$2.90 ea; 3 for \$7.95

GRAPE VINE

Provides delightful fruit for jams jellies desserts or jams. In 6 varieties including the French Hybrids and the new MUSCAT \$1.90 ea; 3 for \$5.25

CURRENTS

Blackcurrents or Redcurrents — 4 varieties to choose from for jams jellies or fresh fruit. The easiest plants to grow—will provide crop the very first year. \$2.49 ea; 3 for \$6.75

WHITE ROSE NURSERIES

SCARBORO STORE 1306 Kennedy Road (North of Lawrence)	UNIONVILLE STORE 87 Highway Unionville (East of Woodbine)	ETOBICOKE STORE 1582 The Queensway ETOBICOKE (Just East of #427)
--	---	--

OPEN Monday Saturday 9 a.m. till 9 p.m. Sunday 9 a.m. till 6 p.m.