

look what's happening during Simpsons Spring Break

Enter the "Bonne Bell" "ANYONE FOR TENNIS" Contest

Now through to Monday, March 31. Enter now... answer a skill testing question and you could win a complete tennis outfit... Billie Jean King tennis racquet with cover by 'Wilson', tennis dress, 'Adidas' tennis bag and 3 'Wilson' tennis balls.

CHILDREN, ENTER!!! The Land of Oz Coloring Contest

Now through Saturday, March 29. Color a line drawing of Tin man, scarecrow, cowardly lion and Dorothy and you could win 4 tickets to Simpsons Spring Theatre Party at the Imperial Theatre viewing the full length movie 'Journey Back to Oz' on Saturday, April 19 9:30 a.m. There will be 30 individual winners at Simpsons Hillcrest Mall in Richmond Hill.

ENTER SIMPSONS SCOTTISH WORLD FESTIVAL TATTOO CONTEST

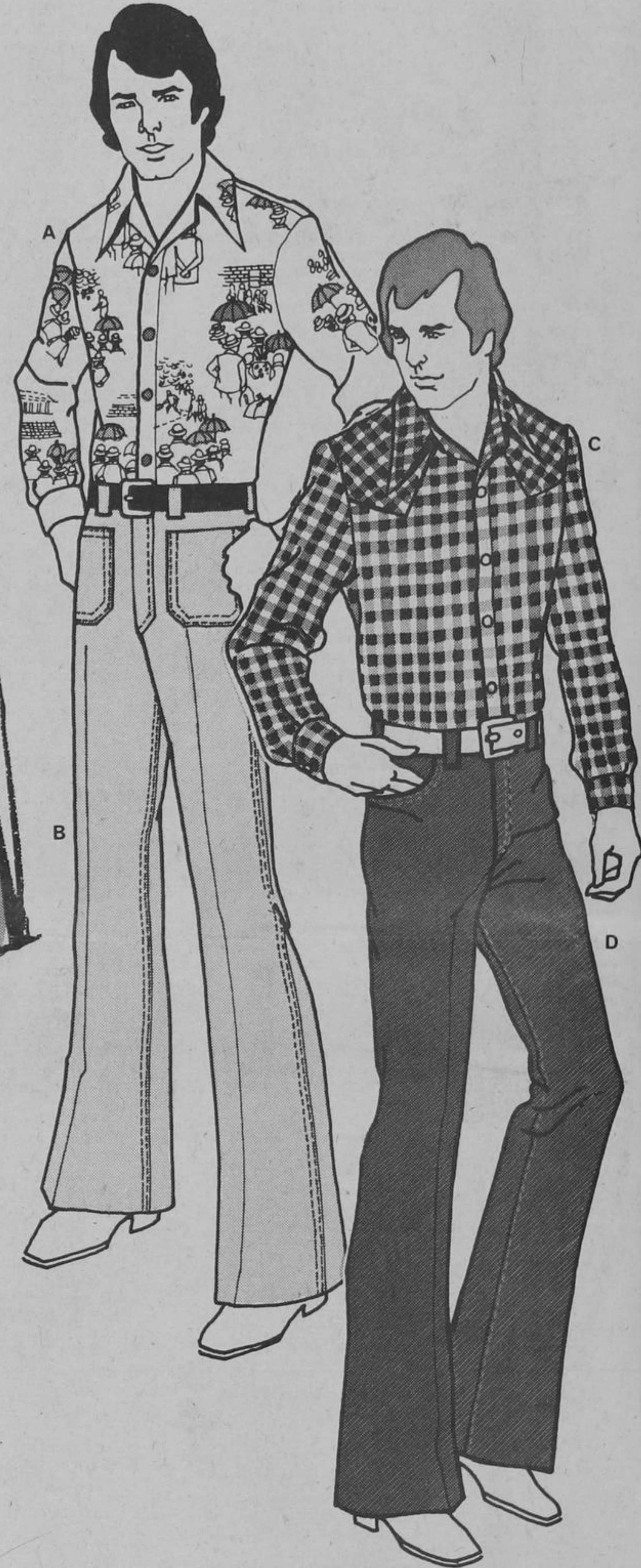
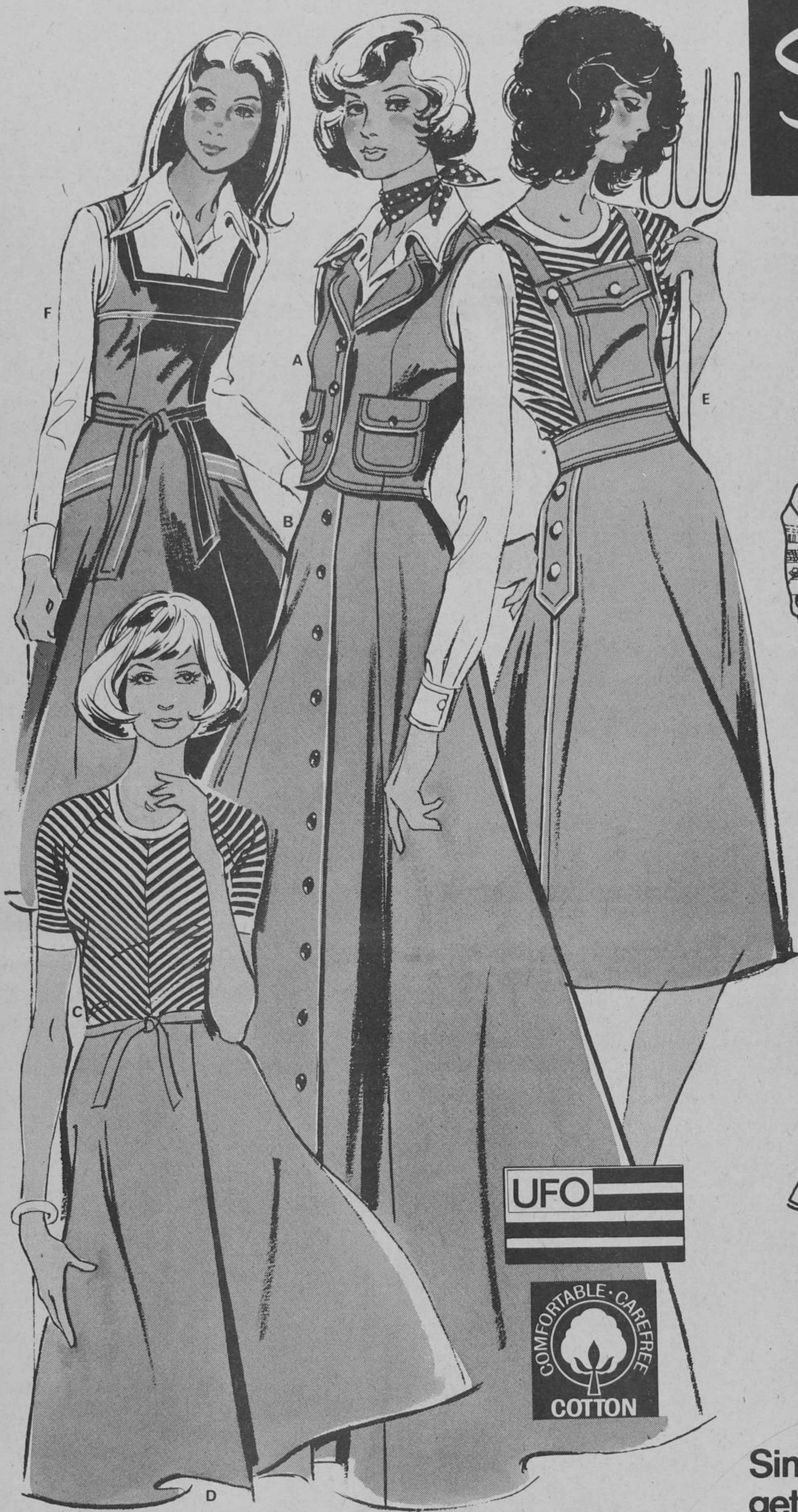
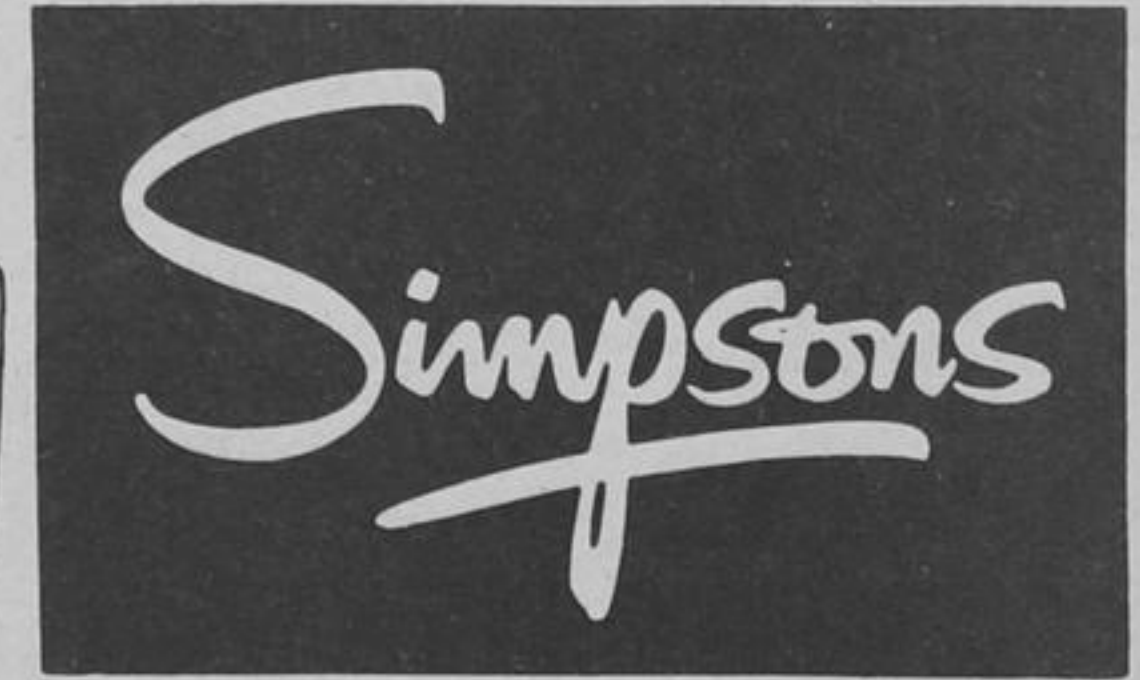
You have a chance to win a pair of tickets to the C.N.E. Grandstand show of the Scottish World Festival Tattoo. Answer a skill testing question about the Scottish World Festival Tattoo... a correct answer gives you a chance to win a pair of tickets. Four winners at Simpsons Hillcrest Mall in Richmond Hill.

DECORATE-YOUR-JEANS CONTEST!!!

Now through Saturday, April 5. Decorate your favorite pair of blue jeans and submit a photograph of them for judging. YOU COULD WIN!!! Two first prize winners at each store will win a distinctive 'LEE' wall mirror. Two second prize winners at each store will win a 'LEE' belt. Two third prize winners at each store will win a 'LEE' sailor hat.

Pick-up your entry forms now at Simpsons Threadmill or E3 Department.

from young fashions to riding needs, Simpsons Hillcrest Mall is where you'll find it



Riding North?



Now, for the convenience of riders, and all interested in the world of horses—especially enthusiasts living to Toronto's North, Simpsons announces the opening of The Riding Shop at Simpsons, Hillcrest Mall in Richmond Hill. At Hillcrest, you'll discover an interesting selection of clothes, equipment and gifts for reders of all ages. In the true tradition of Simpsons, service for your satisfaction will reign. Right here, discover highlights of items available at Simpsons Downtown and Hillcrest Mall stores:

Rubber riding boots - men's sizes: 8 to 11; women's sizes: 6 to 9; children's sizes: 3 to 6. Tax exempt. Child's pair, 24.98 Adult's pair, 27.98

Velvet-covered riding hats for men, women and children. In black, navy blue or mid-brown. Sizes: 6 1/2 to 7 1/8. Each 17.98

'Pytchley' riding jackets for women and girls. Lightweight, all-wool tweeds, checked or plain color styles. Blues, browns or greys. Also 55% polyester/45% wool jackets in plain black or dark blue. Sizes 26 to 38. Each \$85 to \$125

Men's tweed hacking jackets. Irish, hand-woven all-wool tweeds in checks with predominating shade of blue, brown, grey or green. Sizes 34 to 44. Each \$85 to \$125
English jackets—55% polyester/45% wool. Dark blue. Sizes 34 to 44. Each \$85

Women's 'Ratcatcher' shirts—permanent-press blend of 65% polyester/35% cotton. Up-to-the-minute stripes, florals designs and solids in variety of colors. Long-sleeve and short-sleeves. Sizes 14 to 38. Each 11.98

Grooming aids—interesting assortment, including: hoof picks, sweat scrapers, curry combs, dandy brushes, body brushes and water brushes. Each 60¢ to 7.98

Books—assortment on training the horse and rider. Each 2.50 to 10.50

Gifts—variety of gifts for horsemen. Also jewelry.

Professionalism at The Riding Shops.

PHONE ORDERS FILLED—861-8111—24 HOURS A DAY
Simpsons Hillcrest Mall in Richmond Hill—883-1222
and Simpsons Downtown Sports Centre—861-6441
RHL7469

'UFO' sighted in Simpsons E3! The real things. In pre-washed faded blue denim. 100% cotton

Unbeatable, non-stop fashion zap. Blue denim; the more it is washed, the more comfortable these constant friends are. These terrific 'UFO' denims have all been commercially washed, all stiffness removed. So that they're all soft, supple, just right for this new Spring-zing gear. 100% cotton. And all in THAT shade of perfect faded denim blue. Junior sizes 5 to 13.

- A. Sleeveless vest. Button-flap pockets. Each, \$14
- B. Long denim skirt, gored to the right degree of mobile fullness. Buttoned front. Each, \$22
- C. Bias-striped cotton T-Shirt. Green, pink, aqua or navy on beige. Small (5-7) Medium (9-11) Large (13) Each, \$9
- D. Denim wrap skirt, knee-grazing length. Four gores, back wrap and ties. Each, \$18
- E. The pinafore skirt. Dome buttons on suspender straps front pocket, and side tabs. Back zipper (to be worn with all your favorite shirts). Each, \$22
- F. Sleeveless pinafore dress. A-line skirt from the high-waisted top. Stitched tie belt. Two slanted patch pockets. Buttons in back. Each, \$28

PHONE ORDERS FILLED—861-8111
Simpsons Elevation 3, Simpsons Hillcrest Mall in Richmond Hill. RHL7302

Simpsons Threadmill gets guys into gear

G. the scene: yesteryear tennis. the shirt: by 'Apple Bee' Each \$16
'Apple bee' brings back the charm of yesteryear tennis...printed in inky blue or brown on an off-white background. The tapered cut and point collar aid to the winning look. 65% polyester/35% cotton blend; machine washable in water; tumble dry at low. Long sleeves. Sizes: S(14-14½), M(15-15½), L(16-16½). Yo ur

H. new from 'Lee'...wide flare, bleached-look jeans Each 15.95
Wear it w-i-d-e this Spring. Flared and flapping. Looking bleached to a faded powder blue. And feeling as soft as velvet. The new 'Lee' jean is about 9½" at the knee, about 13" at the bottom. 4 patch pockets. 100% cotton you can machine wash and dry. Waist sizes: 28 to 34. Get into Simpsons Threadmill.

J. 'Dale' gingham shirt: the wild west 'un Each \$13
Always a good looker, gingham check gets the western treatment from 'Dale'. With yoke shoulders and pearl-/chrome-look buttons. Long sleeves, tapered cut, and lean looking. 65% polyester/35% cotton blend is machine washable in warm water; hang to dry. Powder blue, navy blue or bright red. Sizes: S(14-14½), M(15-15½) or L(16-16½). Shoot for Threadmill.

K. 'Levi's' new 'Grandenim' jeans...soft and flared wide Each 15.95
Baggy is big, and this denim is a real soft touch. Strong and rugged as ever, though. With western-style scoop front pockets and patch back pockets. About 9¼" at the knee, about 11¼" at bottom. Soft 50% cotton/50% polyester blend is machine washable/dryable. Denim blue. Waist sizes: 28 to 34. Bag one

PHONE ORDERS FILLED—861-8111—24 HOURS A DAY
Simpsons Threadmill, Hillcrest Mall in Richmond Hill. RHL7278