



Maple OASA Midgets Enter Playdowns

The Maple OASA Midgets placed second in local softball league play against teams from Victoria Square, Richvale and Nobleton. They enter the playdowns tonight at 8:30 o'clock at the Maple Community Centre diamond. The second game is at the Victoria Square Community Centre at 8 pm Thursday, with the third and final game probably at Maple if it is necessary. The winners go against Nobleton

for the league championship. Coach Tom Mumery of Netherford Road was on holiday when this team picture was taken. The members (left to right) are: front row — Larry Cooper, Ken Jellison, Stephen Jones and Charles Crevier; back row — Barry Jansen, Randy Tinline, Assistant Coach Bill Tinline of 10 Weller Crescent, Ricky Mondolo, Peter Pflug and Donny Principe.

Monkeys On The Outside Ogle The Seniors On The Bus

Maple Seniors held their second meeting of the summer August 12, with 28 members out, enjoying an afternoon of euchre and crokinole.

Those who were able to attend confirmed their seats on the two current tours and were given details of each.

A bus left Vaughan August 14 with 45 senior citizens, their hostess Mrs. Louise Cooper and Travelways Driver Terry Doyle. Their destination Kitchener.

The hour that was allotted to the group to browse the Kitchener Farmers' Market was sufficient time to accumulate a large assortment of peaches, apples, cheeses, meats, etc. at particularly good prices. We kept the cheese and meat in picnic coolers to avoid a repetition of our first experience of cheese in the heat of a bus three years ago.

After shopping, the group arrived at the Evergreens Motel for their smorgasbord lunch, enjoyed by everyone.

The afternoon stop at the Rockton Animal Safari was fascinating to all, seeing the lions, cheetah, tigers all in one compound, Camels, elephants, rhinoceros, ostrich, etc. and not to mention the monkey compound with the huge St. Bernard dogs on guard at the gate. The highlight of the monkey compound was the extra passengers climbing over the bus and peering in the windows, much in the same manner as our folk were peering out.

One the way home, after a few minutes for refreshments at the snack bar at Rockton, a singsong was begun by our ray of sunshine from Maple, Mrs. Pearl Brown, and everyone returned home in good spirits in time for supper.

In the planning stages is a trip to Niagara-on-the-Lake for a performance at the Shaw Festival Theatre, around mid-September. The most important of all is the four-day tour, October 1, 2, 3 and 4 to Algonquin Park, Ottawa, the Laurentians, Montreal and the Adirondacks. Since this trip involves hotel reservations, names and money must be in by September! This tour is primarily for senior citizens of Vaughan, but names have been accepted from Richmond Hill folk, and will be welcome from other surrounding areas. Anyone not yet a senior citizen can also have their names added to a standby list. The cost of this tour for two people in a room (twin accommodation) is \$95.00 per person, including hotels and bus. Meals are at the discretion of the individual.

Also being planned is a one-day color tour to the area of Collingwood, including the Blue Mountain Pottery. The date of this trip has not been decided, since several have indicated that they are interested in both the one and the four-day color tours, and the four-day is scheduled for the prime week for colour, according to our past experience. Dates, time and costs later. We are eagerly waiting to see the 1974 — 75 Travelways Tours brochure, which has exciting things in store for our senior citizens for this winter, including Hawaii, California and of course Florida. For information on any of the above trips call Mrs. Cooper 832-2408.

THE YORK COUNTY BOARD OF EDUCATION

Administrative Area No. 3
10,271 Yonge Street - Richmond Hill

School Opening — Sept. 3rd, 1974

REGISTRATION

All students resident for the first time in Area 3 and who have not already done so should register during the week of August 26th at the Elementary or Secondary School they will be attending.

TRANSPORTATION

Because of the increase in building development and of changes in attendance zones in some areas it has been necessary to make some minor revisions to the bus numbers and routes for the 1974-75 school year. For specific information please contact your local school during the week of August 26th.

SCHOOL	PRINCIPAL	TELEPHONE NO.
Elementary		
Baythorn	Mr. G. Guyatt	889-7993
Bayview Fairways	Mr. D. McCaw	889-1858
Bayview Glen	Mr. G. Fisher	889-2448
Charles Howitt	Mr. R. Brown	889-2522
George Bailey Sr.	Mr. R. Urquhart	832-1451
German Mills	Mr. G. Moulder	889-8776
Henderson Ave.	Mr. W. Caldwell	889-3132
Joseph A. Gibson	Mr. R. Robson	832-1291
Kleinburg Jr.	Mr. I. Manson	893-1142
Langstaff	Mr. J. Martins	889-1244
Mackenzie Sr.	Mr. M. McRoberts	893-1475
Pine Grove	Mr. J. Lawless	851-0772
Roselawn Sr.	Mr. D. Painter	884-5934
Ross Doan	Mr. L. Payne	884-4022
Royal Orchard	Mr. P. Kurita	889-6272
Stornoway Cres.	Mr. W. Higginson	889-9535
E. J. Sand Jr.	Mr. D. Young	889-2753
Sixteenth Ave.	Mr. B. Robinson	884-5598
Thornhill	Mr. E. Wells	889-1566
Woodbridge	Mr. E. McFadden	851-0102
Woodland Sr.	Mr. W. French	889-4910
Secondary		
Don Head	Mr. C. Seath	884-3330
Langstaff	Mr. A. Martin	889-6266
Thornhill	Mr. D. Sherman	889-5453
Thornlea	Mr. A. N. Murch	889-9696
Woodbridge	Mr. S. Myers	851-2843
Bayview - Area 4	Mr. H. Gerber	884-4453
Richmond Hill - Area 4	Mr. G. Domina	884-2232

Mrs. M. Colbourne
Chairman

S. L. G. Chapman
Director

maple medium

Reminder
For the next two columns, Louise Cooper will be taking over for me while I am on holidays. She lives at 15 Naylon or contact her at 832-2408.

Found
August 14, ladies prescription sunglasses at the Maple ball park. These glasses have brown frames and the owner can claim them by calling 832-2665.

New Church in Maple
The United Pentecostal Church has started to hold services in Maple at the Masonic Hall on Keele Street. The services are held at 2 pm every Sunday and the leader is Alton Dudley of Toronto. Anyone wishing more information about the group is invited to call Mr. Dudley at 767-7973.

Joint Services
The congregations of Maple United, Carrville United, St. Andrew's Presbyterian and St. Paul's Presbyterian churches are truly enjoying their program of combined services planned for the summer months. Services for the month of August and the first Sunday

in September, are being held in St. Andrew's Presbyterian under the leadership of Rev. Stanley Snowden of the Maple United and Carrville churches. Service at 10 am.

King City Defaults
After finishing first in league play, Maple Peeweess were set to meet the King City team in the first round of the O.A.S.A. play-offs. However on the weekend, Maple was informed that King City had withdrawn from the play-offs. Maple thus received a bye and will now play Oak Ridge in the zone semi-final. The first game will be August 20 at Crosby Park in Richmond Hill with the second game scheduled for August 22 at 7 pm in Maple Park.

To keep the boys in shape an exhibition game was played at the local diamond Tuesday night. Thornhill without their top pitcher, brought along a couple of bantam league pitchers but the Maple batters still showed no mercy.

Maple earned their 18 runs on 17 hits, and six walks while four batters went down via the strikeout.

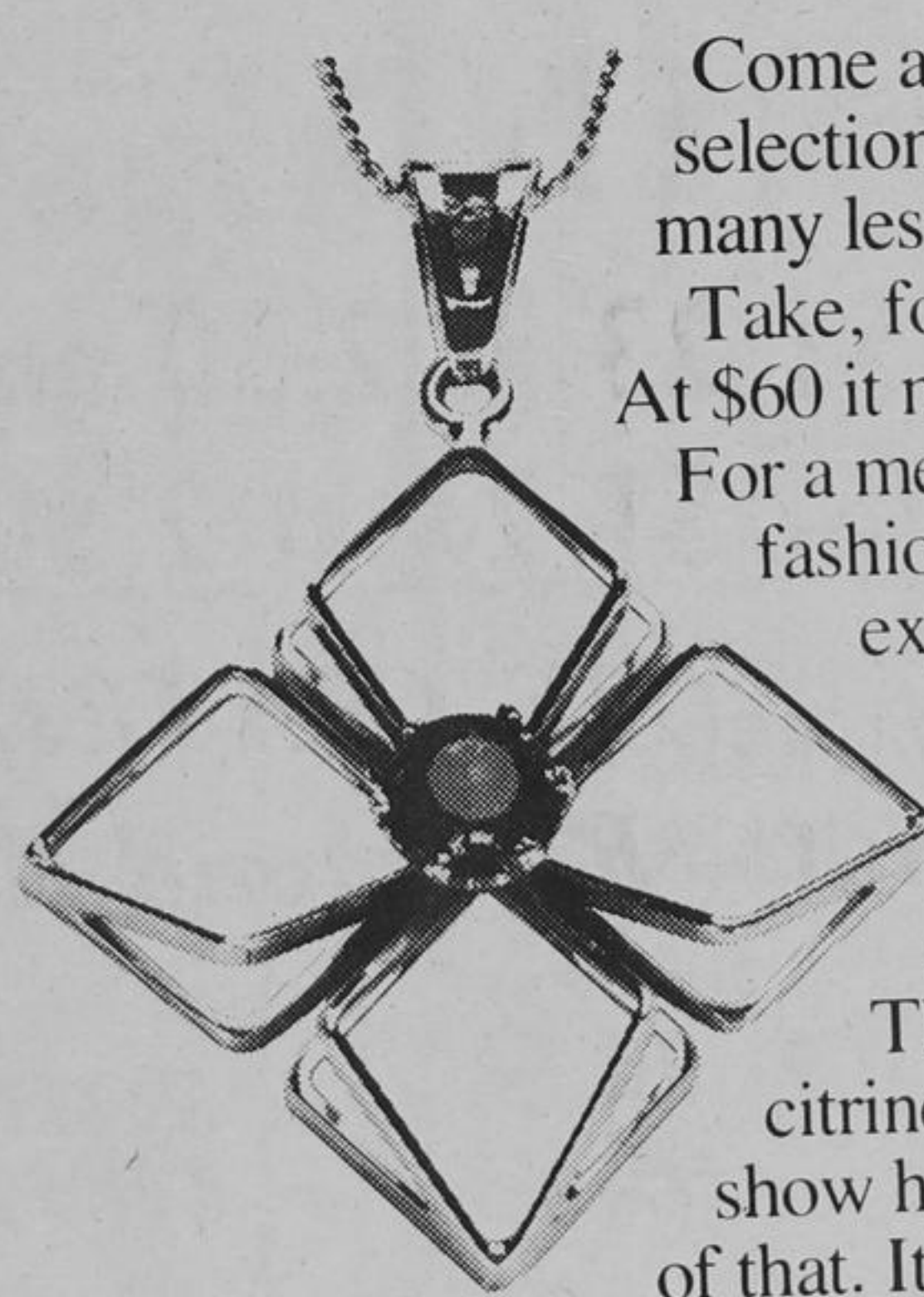
Leading Maple at the plate was Blair Sutherland with three for three which included a bases-loaded homerun. Greg Munshaw three for four including a homer. Wayne Boudreau three for four and Scott Lawson three for five.

Kin Weese, on the mound for Maple, notched yet another victory. He blanked Thornhill on just two hits, struck out 10 and walked three batters. Maple committed the only error of the game.

Don't forget play-offs starting very soon.

SHARON: Out of 300 questionnaires and pamphlets distributed to senior citizens in East Gwillimbury to assess the need for housing, only 47 were returned, according to the OHC. Of these only two were "very interested and needy", it was reported.

Introducing Mappins. A little gem set in Hillcrest Mall.



Come and see us. Because at Mappins we offer a wider selection of affordable, imported items than you might find in many lesser establishments.

Take, for instance, the attractive amethyst pendant shown here. At \$60 it makes a gracious gift or a splendid little self indulgence. For a mere \$19.50 more, a carefully crafted chain will make it fashionably versatile. But, of course, Mappins also offers expensive jewellery. Yet priced not a whit higher than



you might find in places less reassuring. The stunning citrine pendant we show here is proof of that. It's a gorgeous piece set in a 14 Karat gold mount and represents an unusually fine value at \$500. As does the beautiful, hand-wrought golden companion chain at \$595.

As you can see, we take special pride at Mappins in bringing you the best the world has to offer. But we don't think a visit to a truly fine jewellery store should cost you the world.

Mappins
Something for everyone.
There are Mappins stores in major cities across Canada.

"THE LIBERAL" is always willing to publish items regarding people and events contributed by its readers in Maple, Concord, Teston, Kleinburg, Maple, please phone Mrs. Eva Hawkins at 832-2314; in Concord, Mary Dawson at 884-8177; in Kleinburg Margaret Lade, at "The Liberal", 884-8177.

CONCORD CORRESPONDENT

"The Liberal" requires a Correspondent for the Concord area.

If you are interested in serving your home community and earning some extra money then please phone

MARY DAWSON AT 884-8177

S I D I N G S O F F I T

EAVESTROUGH

J. MIESKE ALUMINUM PRODUCTS

25 Year Guarantee
by
Reynolds Aluminum

FOR Free Estimates call 884-8945

FACIA

D O O R S W I N D O W S A W N I N G S