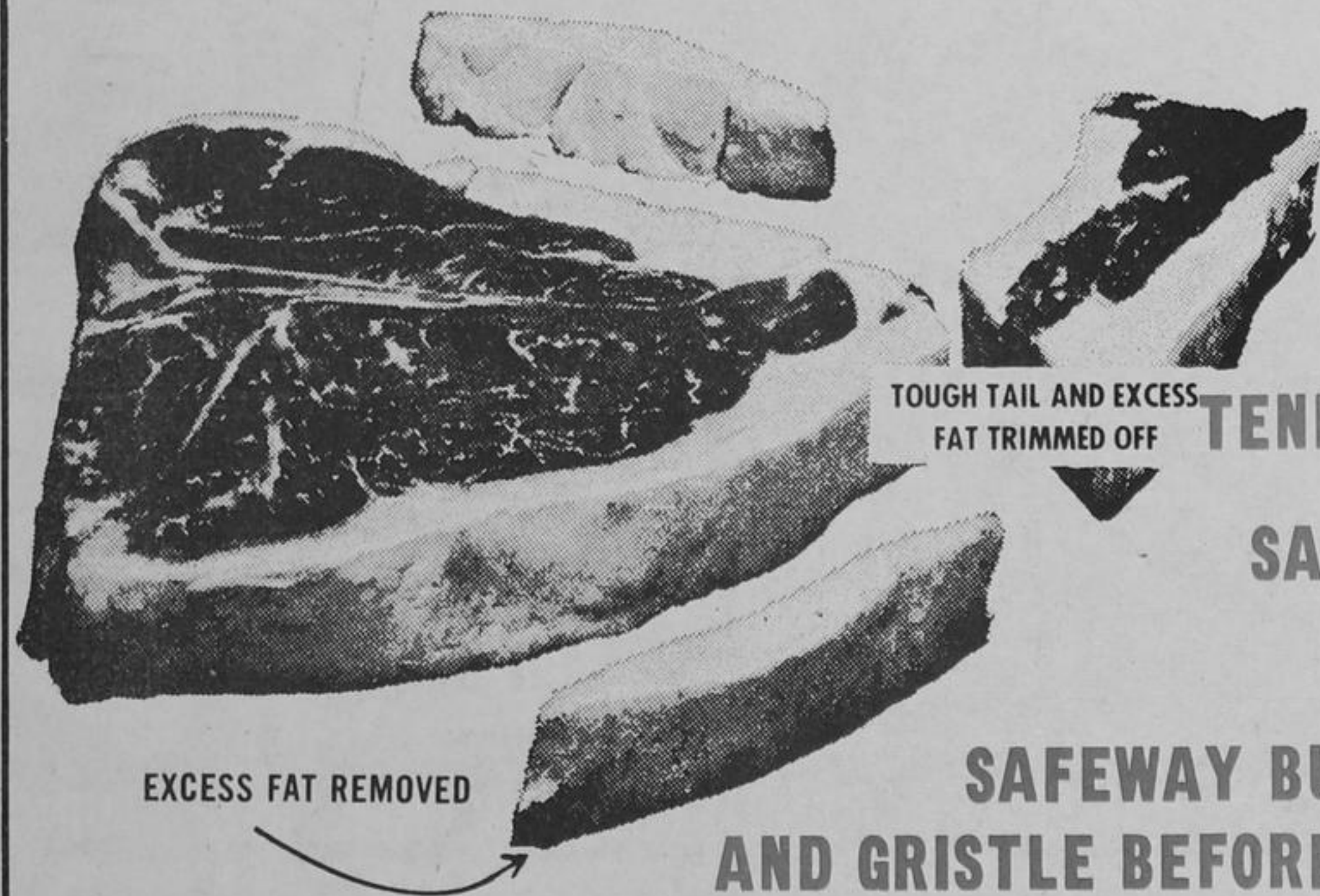


SAFEWAY

SERVING CANADIANS FOR OVER 40 YEARS

the place to buy Meat



EXCESS FAT REMOVED

TOUGH TAIL AND EXCESS FAT TRIMMED OFF

SAFEWAY HANDLES ONLY CANADA GRADE "A" STEER BEEF.

EVEN THE FINEST GRADE OF BEEF REACHES ITS PEAK FLAVOUR AND TENDERNESS ONLY AFTER PROPER AGING.

SAFEWAY BEEF IS AGED TO PERFECTION FOR TENDERNESS AND FLAVOUR.

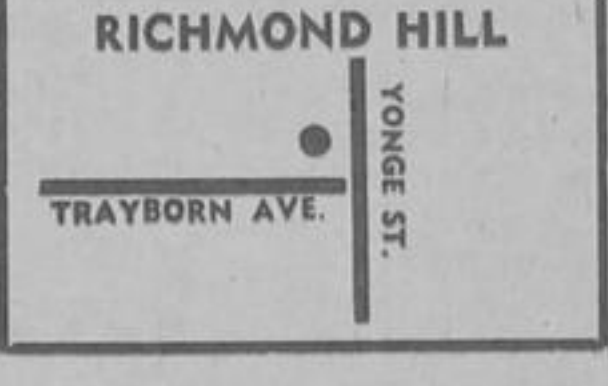
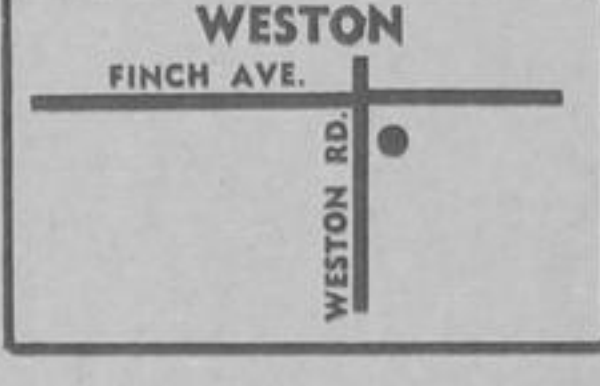
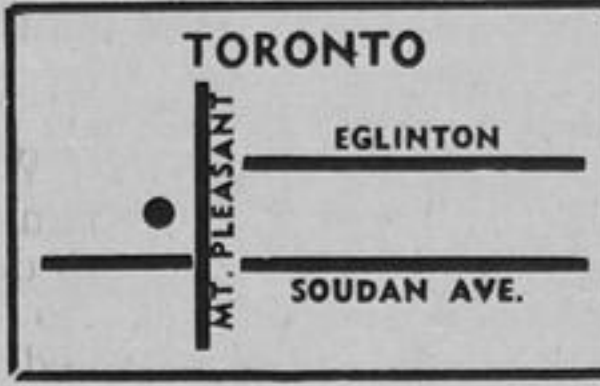
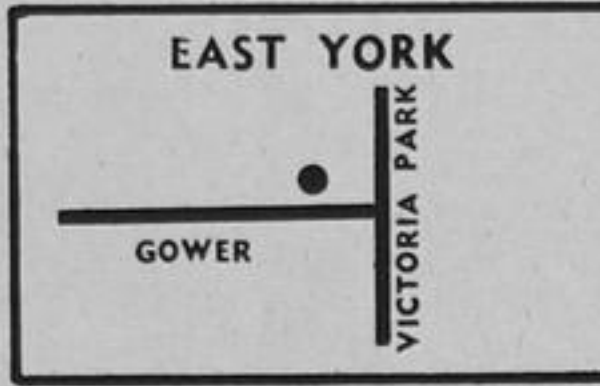
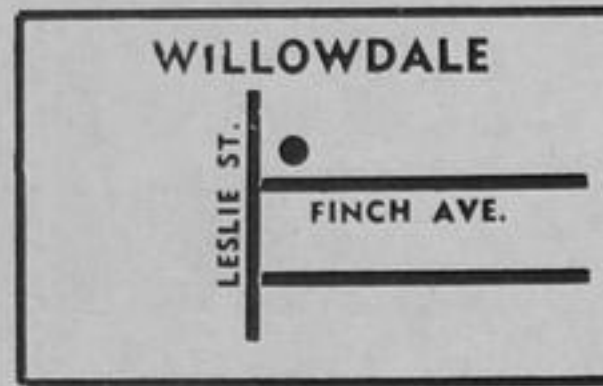
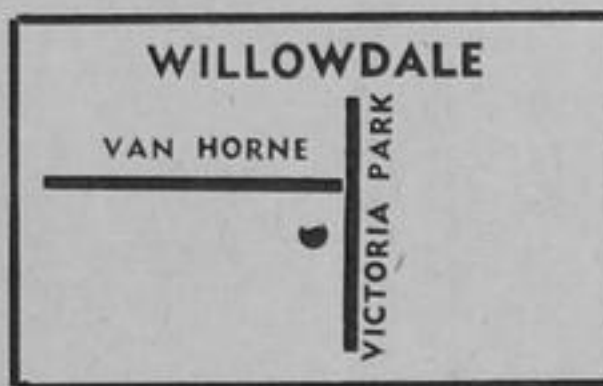
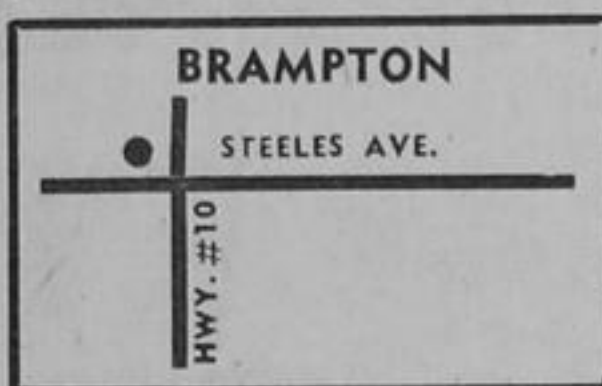
SAFEWAY BUTCHERS TRIM OFF EXCESS BONE, FAT AND GRISTLE BEFORE THE MEAT IS WEIGHED AND PRICED.

SPECIAL!
FRESH
NOT FROZEN
PORK SPARERIBS

89^c
LB.

"NEW STORES NOW OPEN"

SEE MAPS FOR STORE LOCATIONS:



SPECIAL! MIR LIQUID
DETERGENT
2 - 24 FL. OZ. PLAS. CONT. **69^c**

JAVEX LIQUID CONCENTRATED P.P. 49c
Bleach 64 FL. OZ. PLAS. CONT. **39^c**

SPECIAL! DELSEY ASSORTED COLOURS
BATHROOM TISSUE
4 ROLL PKG. **59^c**

SPECIAL! BIRDSEYE FROZEN
COOL WHIP 32 OZ. PLAS. TUB **69^c**

SAFEWAY BRANDS

What are SAFEWAY "S" Brands
SAFEWAY'S OWN BRANDS, which are offered as additions to our wide selection of National Brands offer some of the Biggest Saving Opportunities at Safeway. These fine Guaranteed Brands are made by SAFEWAY, or to our strict specifications. Many of them right here in Ontario.

- SPECIAL! TASTE TELL
Sliced, Crushed, Chunk
Pineapple 4 19 FL. OZ. TINS **1.00**
- TOWN HOUSE MANDARIN
ORANGES 10 FL. OZ. TIN **27^c**
- GARDENSIDE PIECES & STEMS
MUSHROOMS 10 FL. OZ. TIN **37^c**
- COURT SOCKEYE
SALMON 7 1/2 OZ. TIN **69^c**
- LUCERNE
COFFEE TONE 11 OZ. JAR **68^c**
- LUCERNE Canada #1 Grade Powdered
MILK 3 LB. PKG. **1.49**
- SPECIAL! EMPRESS SOFT
MARGARINE 1 LB. TUB **33^c**
- BEL AIR FROZEN CONCENTRATED
ORANGE JUICE 12 OZ. TIN **41^c**
- TOWN HOUSE Choice Pure
APPLE JUICE 48 FL. OZ. TIN **39^c**
- BROCADE WHITE, PINK, YELLOW
Bathroom Tissue 6 ROLL PKG. **79^c**

SPECIAL! GREEN BEANS, WAX BEANS, CREAM CORN, PEAS & CARROTS, MIXED VEGETABLES
AYLMER VEGETABLES
5 14 FL. OZ. TINS **1.00**

- TASTE-TELL
BEANS WITH PORK 14 FL. OZ. TINS **18^c**
- WESTON'S WAGON
WHEELS 16 OZ. PKG. **49^c**
- KRAFT REGULAR
CHEESE WHIZ 16 OZ. JAR **88^c**
- BROMO
SELTZER 5 1/2 OZ. JAR **93^c**
- DURAFLEME FIREPLACE
LOGS SINGLE LOG **89^c**
- HOMESPUN
SERVIETTES PKG. OF 180 NAPKINS **69^c**
- BABY SCOTT REGULAR
DIAPERS PKG. OF 30 **1.69**
- RIGHT GUARD
REGULAR OR ANTI-PERSPIRANT
DEODORANT 6 OZ. AEROSOL TIN **1.17**

PRODUCE DEPARTMENT VALUES

INDIAN RIVER WHITE
GRAPEFRUIT
SIZE 48 **3 FOR 26^c**

For Value - For Nutrition - Buy Eggs
WHEN PRICE PER DOZEN IS THE PRICE PER POUND IS THE COST 2 EGG SERVING

59 ^c	33 ^c	8 ^c
69 ^c	46 ^c	10 ^c

ONE DOZEN GRADE "A" LARGE EGGS WEIGH 24 OZ.
SUNNYLEA EGGS
AT COMPETITIVE PRICES

WE RESERVE THE RIGHT TO LIMIT QUANTITIES. PRICES EFFECTIVE TORONTO, BRAMPTON, RICHMOND HILL, JAN. 8 TO 13, 1973.

MEAT DEPARTMENT VALUES

REGULAR QUALITY GROUND BEEF LB. 88^c	CANADA GRADE "A" STEER BEEF CHUCK STEAKS LB. 98^c
BONELESS CUBED STEWING BEEF LB. 99^c	FRESH NOT FROZEN BEEF LIVER LB. 69^c
SUPER VALUE V.P. SLICED SIDE BACON 1 LB. PKG. 89^c	LUCAS ARTHURS VACUUM PACKED WIENERS 1 LB. PKG. 59^c 2 LB. PKG. 1.09
MAPLE LEAF V.P. SLICED BOLOGNA 16 OZ. PKG. 59^c	SHOPSY'S OLD VIENNA SALAMI CHUB 20 OZ. CHUB EACH 1.19
SHOPSY'S VACUUM PACKED SLICED CORNER BEEF 4 2 OZ. PKGS. 89^c	SWANSON FROZEN T.V. DINNERS BEEF TURKEY CHICKEN 11 OZ. PACKAGE 65^c