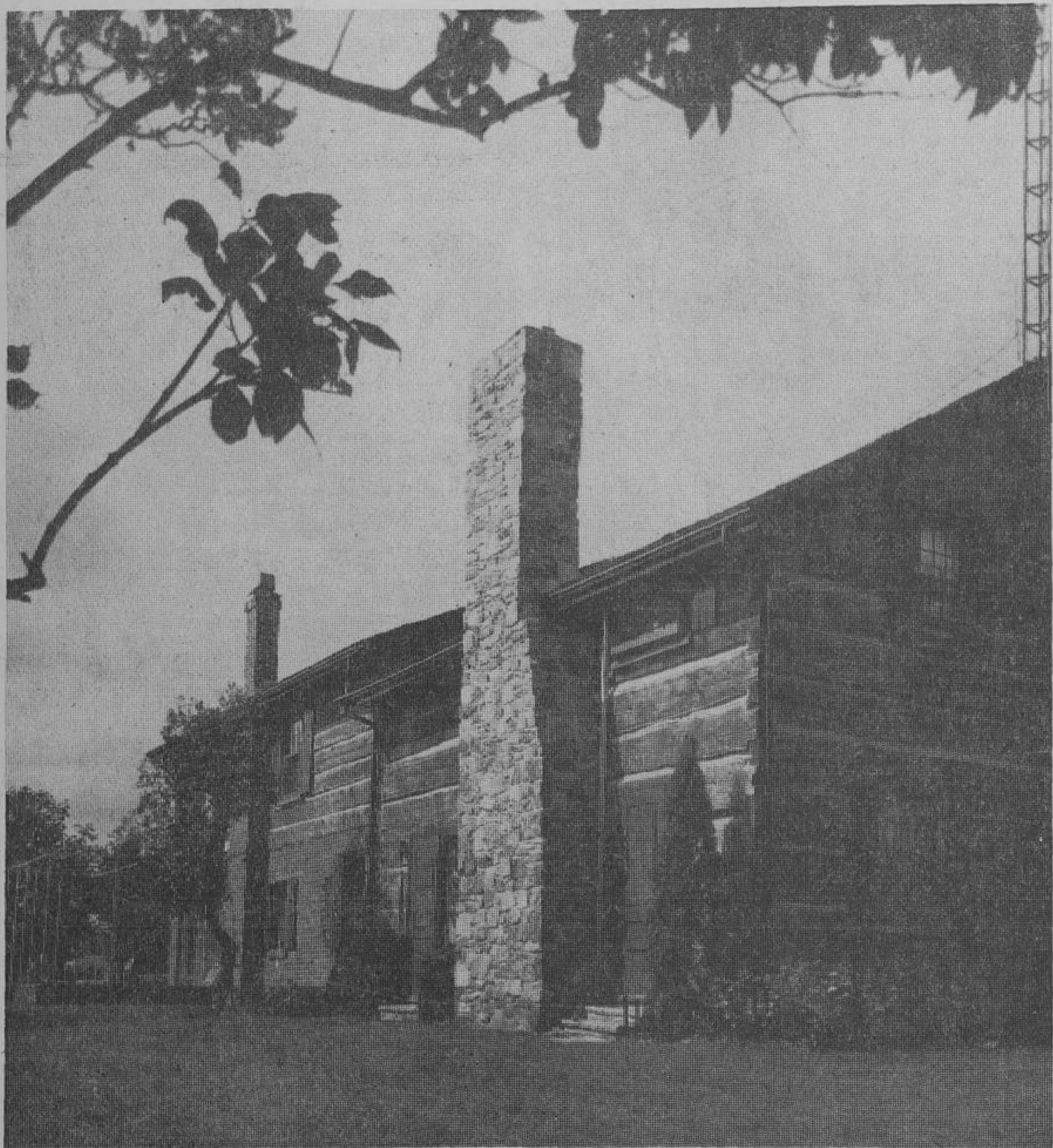


Touring Homes Proves Profitable King Branch Of York Central Hospital Auxiliary



(Photo by Stuart's Studio)

The log house pictured above was built in 1820 and is the home of Mr. and Mrs. John Addison. Located on Bathurst Street in King Township, it was one of four gracious homes on the itinerary for the house tour sponsored by the King Branch of York Central Hospital Auxiliary.

Also included in the tour was the old St. Andrew's Presbyterian Church at Eversley, built in 1848 and used continuously up to 1958.

MARGARET LADE
When taxes threatened to eat up his estates, Britain's resourceful Duke of Bedford shocked the Duke of Devonshire by opening the ancestral halls to the public, personally conducting tours which proved to be very popular and very lucrative. Criticism subsided as other dukes and earls and members of the lesser aristocracy jumped on the bandwagon. The strongholds of feudal barons and landed gentry were snatched from the jaws of bankruptcy as dozens of ancient castles and gracious homes were added to the itinerary of guided tours, and even in this tight-money age, business is brisk.

The enterprising duke had made his point: you cannot hold a good man, or a good idea, down. It is not surprising, therefore, that women's auxiliaries on this side of the Atlantic, ever on the alert for new money-making ideas, have joined the parade. They couldn't miss. Human nature being what it is, who of the lesser aristocracy can resist a glance at a lighted window, a peek through an open door? In recent years the house tours have turned out to be a veritable bonanza for the hospital auxiliary, the Humane Society, the YWCA, and one of the most successful in York County was the recent house

and tea sponsored by the King Branch of the York Central Hospital Auxiliary. The wind was brisk, but the day, September 24, was warm and sunny, and about 400 people turned out in a steady procession from 1 to 5 p.m., full of curiosity and enthusiasm as they paraded non-stop through four very interesting homes and a century-old church, pausing for tea at a house number two. Fortunately, everyone did not follow the route in a sequence as it was laid out, so there was a constant coming and going — no serious traffic jams. And judging from the comments, everyone thoroughly enjoyed the afternoon.

The overall theme was traditional, with each home reflecting the taste and personality of its owners and inhabitants. And although appointments were vastly different, ranging from the formal decor of the Old English Tudor style mansion of Mr. and Mrs. Michael Roche to the casual atmosphere of Dr. and Mrs. Michael Willinsky's 1836 cottage, all had some things in common — a modern kitchen and bathroom.

And as the tour progressed, the comments of fellow travelers were almost as interesting as the houses themselves. There were no guides to explain or describe the history and appointments of the various houses, but auxiliary members were on duty at each house to answer questions and, when the need arose, to direct traffic. In many cases the view from the outside was as impressive and appealing as the house itself.

HISTORIC HOME
House number one belongs to Mr. and Mrs. John Addison. The original log house was built in 1820, but the more recent addition does not appear to be tacked on.

The house on Bathurst Street north of the King-Vaughan townline, is set back from the road by a circular driveway, and the neatly manicured fields, rail fences, and well-kept barns and outbuildings have a picture-book look about them.

An old clock with its original wooden works stands in the entrance hall.

In the new part of the house, highly polished hardwood peeks out around the edges of the deep piled beige brocade in the living room and dining nook, and traditional oil paintings adorn the walls.

French doors open onto a glassed-in patio, and the well-appointed red brick barbeque has an inviting look.

Huge hand-hewn logs are exposed in the interior walls of the original house. Most of the furnishings are almost as old as the house, handmade of pine — a dry sink, desk, dresser, rocking chair and child's rocker with cane seat, a harvest table and chairs, a corner dresser, child's desk and milking stool. There are gleaming copper pots, a kettle and samovar, trophies and guns of various calibres and vintages.

ENGLISH TUDOR
Further north on Bathurst Street the stately home of Mr.

and Mrs. Michael Roche stands at the end of a driveway shaded by blue spruce, pine and chestnut trees.

In classic Tudor fashion, the stuccoed peak is set off with stained beams adorned with handcarved grape leaves and

More than a century of living is reflected in the family room

WE RENT CONTRACTORS' EQUIPMENT
Scaffolding * Extension Ladders * Heaters
Pumps
Trenchers (24" depth)
Boom Truck - 16' — Stake - 18' boom
Lift Capacity - 2 ton
Richvale Scaffold Rentals
9114 YONGE ST.
THORNHILL 889-1059



"CASCADE 40 KNOCKS OUT ALL OTHER WATER HEATERS"
Everyone Is Cheering For CASCADE 40!
Cascade 40 has knocked out more than 2,700 tired, worn-out, unreliable water heaters in Waterloo! Quite a record. Cascade 40 is an efficient, dependable CLEAN fighter... never gets dirty in the ring. It's a fact that Cascade 40 has never been Knocked COLD! Other water heaters throw in the towel after a few rounds, but Cascade 40 keeps on fighting!
Put Cascade 40 in your corner for only \$1.50 monthly. This low charge includes normal installation and any subsequent replacement. You may buy Cascade 40 at any time after one year and receive full credit paid during the first 12 months.
Have all the hot water your family needs when they need it. See RICHMOND HILL HYDRO now about the trouble-free, economical CASCADE 40 electric water heater!
RICHMOND HILL HYDRO
4 YONGE STREET SOUTH
884-4466

cluster, and the casement windows have leaded panes. The entrance hall, living room, dining room and library are paneled in fruitwood, and handcarved lintels top the doorways.

In the dining room, the visitors' attention was divided between the ornately handcarved ceiling beams and the formal setting of damask and antique china and silver.

The wood panelling continues up to the second floor along with the handcarved lintels and leaded windows.

The period theme is carried out in a very feminine bedroom with pale blue walls, open fireplace, fourposter bed with dainty pale blue canopy and sheer frilly curtains.

Visitors were intrigued by a cosy room with leather upholstered furniture, an unusual round Japanese screen, glass-topped Oriental type coffee table and Oriental statuary. ("Is this the library? There are no books").

Opposite the house, down a small hill and past a large weeping willow there is a kidney-shaped swimming pool surrounded by a wrought iron fence, and behind it is a large "beach house" in natural wood with sloping roof and large expanses of window front and back.

Here the ladies of the auxiliary served tea and coffee with dainty and delicious sandwiches and fancy cakes and cookies and petite fours. ("Look at the broadloom all around the pool").

Many visitors took advantage of the opportunity to relax in deck chairs around the pool and to enjoy the scenery.

ROLLING HILLS OF KING
Windsong, the home of Dr. and Mrs. Michael Willinsky, is on Dufferin Street north of the CFRB Sideroad, and the original cottage was built in 1836. An extension has been added overlooking the garden and the rolling hills of King Township.

It is a cosy place of white clapboard with an inviting bay-window, tiny window panes and frilly curtains.

Paint has been stripped from the original pine woodwork, and large shag rugs partially cover plank floors.

Antique hand made pine furniture is everywhere — tables, chairs, a commode and sideboard, a chest with its original blue buttermilk paint, a child's cradle which serves as a toy box for the modern Willinsky children.

More than a century of living is reflected in the family room

with its stone floor and stone fireplace and the dark beams of the peaked roof. Iron kitchen utensils hang on white walls, and copper utensils and books on art sit in book nooks beside tomes on medical science.

ARCTIC NARWHAL
There is a silver topped inkwell made from a hoof (a cow, a buffalo?) and in the corner there is a narwhal tusk that Dr. Willinsky brought back from the Arctic (What is a narwhal?) The tusk looks to be more than six feet tall, and is said to be the largest in captivity. It looks like the horn of a unicorn.

Cotswold, the home of Mr. and Mrs. Peter Wright is on Green Lane. The long driveway is bordered by trees and lawns and English-style country gardens. There are hills and terraces and rockeries and benches and chairs where one may sit in the shade.

It has the outward appearance of an English-style cottage, and the coat of arms of Barclay's Bank — a black spread eagle with three crowns — is embossed on a large window pane in the front entrance.

Here, too, hand made pine furniture is very much in evidence. Antique-lovers would covet a beautiful old dresser with diamond-point doors.

Biggest attraction in the dining room is the long pine table with accompanying cane-seated ladder-back Mexican chairs.

The double patio is silent witness to the obvious fact that the inhabitants love outdoor living — and no wonder with the breathtaking view of hills and valleys and trees in a dozen shades of green and yellow and orange.

It would be easy to relax on the chintz upholstered wooden furniture on the flagstone patio, and the adjoining patio with its concrete block flooring, blue painted metal furniture, rustic bar and glaze blue and white topped table is equally inviting.

It is a bit of a walk down the hill to the kidney shaped pool and white clapboard beach house, but on a hot day it would be well worth the trip. And next to the swimming pool there is a small circular wading pool for the small fry.

The old part of the house was built in the 1850's, and the liv-

ing room has been restored with natural pine beams, fireplace and plank floors. The book-lined library with its gleaming brass ornaments provides a cosy retreat.

PIONEER CHURCH
The last stop on the tour was the historic St. Andrew's Presbyterian Church at Eversley.

The first congregation was formed as a Presbyterian mission field in 1820, and the original log church built in 1834.

The present stone structure was erected in 1848 on property bought from Joseph Well for five pounds sterling.

Although the church has not been in use since 1958, it has been carefully preserved, as has the adjoining graveyard where Henry Frost, the originator of musical education in Ontario schools was buried in 1851 at the age of 35.

The pulpit is gone, and the choir chairs, but the floors and

pews had been freshly scrubbed and the ancient carpeting carefully cleaned.

Convenor for the tour was Mrs. Jean-Anne McClelland, and house convenor was Mrs. Alfreda Purves. Mrs. Barbara Merrifield and Mrs. Polly Herring were tea convenors, and Mrs. Carol Fraser ticket convenor. Mrs. Kay Powell was responsible for publicity, and King Branch YCHA president is Mrs. Yvonne Collard.

Opening
THE PANT-IN
Richmond Hill's First Unisex Shop...
24 YONGE STREET NORTH
FRIDAY, OCTOBER 16th
Open Until 9 p.m. Friday
Showing the newest styles in cords, velvets, jeans, sweaters and belts. Make a date Oct. 16th and see the grooviest threads in town.
REFRESHMENTS
FREE GIFTS to the 1st 50 customers
LUCKY DRAWS during our opening
Phone 884-9339

Introducing a revolutionary new small car.



The 1971 Super Beetle.

What makes it revolutionary is the way it looks inside, not so much the way it looks outside. It'll carry twice as much as last year's Beetle because it has a trunk virtually twice as big. It has a peppy 1600 c.c. engine. A whole new suspension system designed by Porsche racing engineers. A new flow through ventilation system. The brakes are bigger. The front track is wider. We have an electric rear window defogger. A shorter turning radius. Even the inside, quite frankly, has more class.

It's fully carpeted. The dashboard is more dashing. There are 7 fresh air outlets. All in all, the Super Beetle is 89 ways different from the Beetle of old. And over 60,000 ways different from the first Beetle we made. But in one very important and unique way, it remains the same: For in 1971, a year in which everybody is feverishly slapping together "revolutionary" new small cars, the name on the back of this one, reads "Volkswagen".



W. & P. Motors Limited
178 YONGE STREET NORTH/RICHMOND HILL/889-7701

TOWN OF RICHMOND HILL
TENDER
Supply and Delivery of Bulk Winter Road Salt
SEALED TENDERS, addressed to R. Lynett, Clerk, Municipal Building, 56 Yonge Street N., will be received until 4:30 P.M. Monday, October 19th, 1970 for the supply and delivery of approximately 2100 tons of Winter Road Bulk Salt at the Town Works Yard, 31 Pugsley Avenue, Richmond Hill.
Price per ton quoted shall include all handling charges and applicable sales tax.
Delivery shall conform to Town requirements for Sand Blending purposes.
The lowest or any tender not necessarily accepted.
O. S. Whalen, Works Commissioner.

TOWN OF RICHMOND HILL
TENDER
For the Supply, Delivery, Stockpiling and Blending of Winter Sand Requirements
SEALED TENDERS, addressed to R. Lynett, Clerk, Municipal Building, 56 Yonge St. N., will be received until 4:30 P.M. Monday, October 19th, 1970 for approximately 5000 tons of sand for winter road sandpiling purposes.
Price per ton quoted shall include delivery to Town Works Yard, 31 Pugsley Avenue, Richmond Hill, stockpiling and blending with road salt to Town requirements.
Tender to state number of days required to complete operation after notice of acceptance.
All tenders shall be accompanied by a D.H.O. certification of approval conforming to their specifications.
The lowest or any tender not necessarily accepted.
O. S. Whalen, Commissioner of Works.