

### County Enumerators Call At All Homes

Eighty residents selected from the 14 municipalities in York County have been employed for enumerating purposes in connection with the 1970 assessment.

Ken Andrews, regional assessment commissioner, advised the enumerators will be calling at every property to obtain the required statistical information and is scheduled to commence this week and be completed by the end of May.

The enumerators receive a two-day instructional period conducted by the assessment staff at the county building before proceeding. The first school was held on April 7 and 8 and further schools will be held during the following weeks.

The information to be obtained is required for preparation of municipal voters' lists, jurors selection, population census, which also form the basis for per capita grants received by the municipality.

Mr. Andrews says the assessors formerly gathered this information during their annual visit. However, the assessor is an appraiser and concerned primarily with the proper valuation of the property. Too much of the assessor's time was devoted to the clerical duties and under the new policy the assessor will be able to devote more of his time to the proper function of property valuation.

Mr. Andrews says previous surveys indicated married ladies prove to be the most suitable persons for the enumeration work and are better received and able to obtain the information.

To dispel any doubts the householder may have, all enumerators will carry an authorized identity card with their photograph.

### Trustees Approve Fund Raising In Separate Schools

In discussing policy on fund raising and student projects in the schools, trustees of York County Roman Catholic School Board agreed it must consider its public image.

A staff recommendation on policy presented to a board meeting on April 7 suggested there is value to pupils in a moderate amount of fund raising or involvement in community projects administered jointly by the principal and pupils of the school.

"Such activities could be for the purpose of aiding the Junior Red Cross, UNICEF, missionary and charitable works."

It recommended considerable latitude be left to the individual principal and pupils in selecting suitable projects, but outlined certain guidelines for principals.

Richmond Hill Trustee John LeClaire advised that projects should be approved by the administration, that in some schools the privilege of raising funds might be badly abused.

"I once had a teacher who had her boys out every day, all day, on damn paper drives and her girls making candy and calling it 'home economics,'" he told the board.

Woodbridge Trustee Noreen Lee agreed. "We should be sure to maintain public relations in the community at a high level. Raffles, selling chocolate bars, etc., and soliciting prizes from local businesses can become a nuisance to the community."

The approved policy will permit raising of funds through activities that "grow naturally from the curriculum such as performances of musical, dramatic or athletic groups, or any other student activity for which an admission is charged."

It will permit parents to assist schools in raising funds for "worthwhile causes" such as overnight excursions or field trips for which public funds could not properly be provided.

The policy approved allows "minor fund raising activities by each school or classroom providing it is understood that it is a voluntary effort, administered by the staff and pupils without any pressure on any student to contribute or participate."

It also prohibits any levy or fee on any pupil, but allow schools and pupils to provide moderate assistance to community charitable projects on a voluntary basis, subject to approval of the principal and staff.

Finally the policy states that none of the above activities should encroach unduly on the school day, or adversely affect good public relations within the community.

Accounts must be kept of all funds raised by pupils so that, if necessary, they may be audited.

"We have tried to cover almost everything that could take place in the school," said Superintendent Joe Hodge. He assured the board that the administrative staff would discuss the policy with all principals.

**AURORA:** The Giovannelli Accordion Concert Orchestra of 25 members plus two percussionists and more than 50 junior students from Newmarket will be performing May 2 at 8 pm in the community centre here. The orchestra, with the symphonic sound, will compete in the national competitions in Louisville, Kentucky, in July.

# Regular low prices—plus... BIG WEEKEND SPECIALS!



7 Varieties Shirriff Jelly  
**Desserts** 6 6 oz. Pkgs. **99¢**

4 Varieties Robertson's  
**Marmalades** 12 oz. Jar **39¢**

6 Varieties Peck Frean  
**Biscuits** Ass't'd Sizes **59¢**

Cap 'n Crunch 11 oz., Hunny Munch 10½ oz., Quisp or Quake 8 oz.  
**Quaker Cereals** 2 Pkgs. **89¢**

Pillsbury Sweetmilk or Buttermilk  
**BISCUITS**  
8 8 oz. Pkgs. **99¢**

Stretch 'N Seal  
**FOOD WRAP**  
75 Foot Roll **59¢**

Royale White, Green, Blue or Pink Bathroom  
**TISSUE** 2 ply  
4 Roll Pkg. **65¢**

Royale Aqua, Pink, Yellow or White — 2 Ply  
**PAPER TOWELS**  
2 Roll Pkg. **49¢**

Symphony White or Assorted Pastel Shades  
**FACIAL TISSUE**  
3 Boxes of 200 **1.00**

**FRESH FRUITS AND VEGETABLES!**  
Fresh From The Tropics!  
**CHIQUITA or CABANA BANANAS**  
lb. **14¢**

Canada Fancy Grade Ontario Grown  
**McIntosh Apples** 3 Lb. Bag **49¢**

New Crop Sweet Eating — South African  
**Barlinka Grapes** lb. **49¢**

**FROZEN FOOD FEATURES!**  
Dominion Fancy Seasoned  
**Corn Kernels** 20 oz. Bag **39¢**

Farm House  
**Apple Pie** 24 oz. Pkg. **49¢**

Dominion Concentrated Regular or Sugar Added  
**Orange Juice** 2 6¼ oz. Tins **39¢**

### SAVE ON DOMINION'S OWN BRANDS!

Domino  
**TEA BAGS**  
PKG OF 60 **49¢**

Richmello  
**SALAD DRESSING**  
32 OZ. JAR **49¢**

Dominion Fancy  
**TOMATO JUICE**  
6 19 OZ. TINS **1.00**

Dominion  
**ALL PURPOSE FLOUR**  
10 LB. BAG **79¢**

Domino  
**LIQUID DETERGENT**  
64 OZ. CONT. **89¢**

Powdered Detergent  
**DOMINO BLUE**  
4 LB. PKG **99¢**

Domino Instant  
**COFFEE**  
6 OZ. JAR **79¢**

### SPECIAL FEATURES THIS WEEK!

Refreshing Fresca or  
**COCA-COLA**  
9 10 oz. Tins **99¢**

Dominion's Own Brand  
Richmello PONY-TAIL Sliced  
**WHITE BREAD**  
4 24 oz. Loaves **99¢**

### STOCK-UP NOW & SAVE!

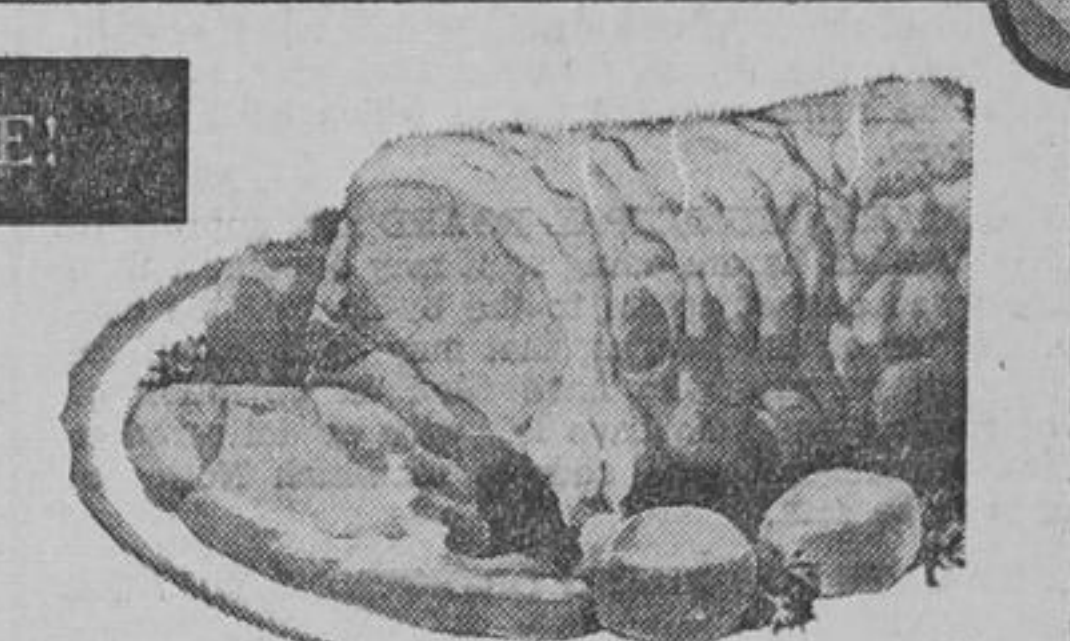
Austral Fancy Halves or  
**PEACH SLICES**  
2 28 oz. Tins **89¢**

Orange Flavoured  
**TANG CRYSTALS**  
6½ oz. Env. **42¢**

Puss 'N Boots Beef, Chicken, Fish, Kidney or Liver  
**CAT FOOD**  
15 oz. Tin **20¢**

### DOMINION FRESH LOIN PORK SALE!

TENDERLOIN END  
3 to 4 lb. AVERAGE  
**PORK LOIN ROAST** LB. **59¢**



Family Pack—6 to 9 Chops/Tray Sliced Quarter  
**PORK LOIN** lb. **69¢**

Country Style  
**SPARE RIBS** lb. **69¢**

Centre Cut Loin  
**PORK CHOPS** lb. **89¢**

Shopsy Famous  
**Corned Beef** 4 2 oz. Pkgs. **99¢**

Maple Leaf Skinless — Pure  
**Pork Sausage** 1 Lb. Pkg. **69¢**

Maple Leaf  
**Cooked Ham** 6 oz. Pkg. **69¢**

Maple Leaf Ready To Serve  
**Dinner Hams** Vac. Pack Lb. **1.19**

Maple Leaf & Dominion  
**Wieners** 1 lb. Pkg. **59¢**

Maple Leaf Pure Pork  
**Sausage Meat** 2 lb. Pkg. **99¢**

**this week**  
**Volume 13**  
The Illustrated  
**COLUMBIA ENCYCLOPEDIA**

**Cancer can be beaten!**  
CANADIAN CANCER SOCIETY

Values effective in Richmond Hill & Newmarket until closing Saturday, April 25, 1970. . . . We reserve the right to limit quantities.

**DOMINION**  
DOMINION STORES LIMITED