

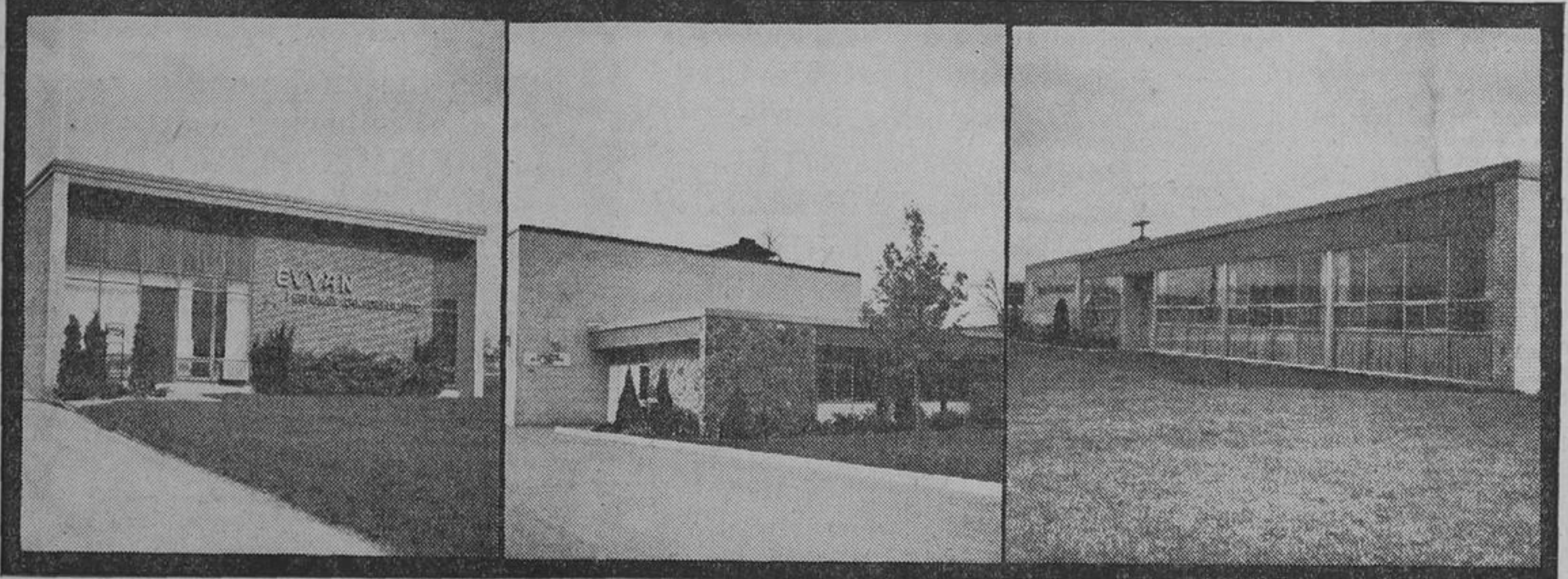


HERE are the three best kept industrial properties in Richmond Hill, the unanimous choice of Richmond Hill Civic Improvement Committee for its 1967 awards. A series of visits was made to each property during the year to ensure the high standard of appearance was maintained. Left to right are Evyan Perfumes (Canada) Limited, Canadian Heat Treaters Limited (both winners in 1966 also) and Texas Instruments Inc.

Runners-up were Perry Hill Wood Industries Ltd., Ratcliffs (Canada) Ltd., General Concrete Ltd., Diomatic Metal Products 1960 Ltd., Ramsay (Rec.) Ltd., Richmond Hill Hydro and Richmond Hill Waterworks. All are complimented on their efforts to improve the appearance of their properties and the town as well.

In making the final selection the committee considers, in addition to the overall appearance of the property, buildings and fences, tidiness and freedom from weeds of lawns and boulevards, planting of evergreens, shrubs and trees in relation to the buildings, placement, condition and brightness of flower beds, and the condition and appearance of driveway and parking lot.

The colorful awards, illustrated on the left, were presented to the three winners November 6 by the Civic Improvement Committee's Vice-Chairman Sam Hall.



EVYAN PERFUMES (CANADA) LIMITED

CANADIAN HEAT TREATERS LIMITED

TEXAS INSTRUMENTS INC.

East Side Church Survey

Reveals Membership Discrepancy

Ninety volunteers carried out a house-to-house inter-church survey on the east side of Richmond Hill in late September, distributing 2,084 cards. Participating churches were Our Lady Queen of the World Roman Catholic, St. Paul's Lutheran, St. Matthew's United and the Anglican Church of St. Gabriel the Archangel. The area covered was between the CNR tracks and Bayview Avenue.

Of these cards, one for a family, 228 gave indefinite or no information in answer to questions about denomination, congregation and church preference. Of the 2,084 families contacted, 20.9% indicated they were Roman Catholic, 41.3 families claimed to attend Our Lady Queen of the World and nine attend St. Mary Immaculate, with 12 families going to other churches.

The United Church led the list with 27.1%; 462 families for St. Matthew's United, 64 for Richmond Hill United and 38 for other congregations.

Anglicans accounted for 25.1% with 415 families indicating they belonged to St. Gabriel the Archangel, 95 to St. Mary's and 16 to other congregations.

Ninety-five families indicated they attended Richmond Hill Presbyterian Church and 15 families go to other churches of that denomination for 5.3% of the population.

St. Paul's Lutheran was indicated as the church attended by 62 families with six families attending other Lutheran churches for 3.3% of the homes contacted and the Baptists were supported by 3.1%.

Thirteen families attend St. John's Baptist Church, 41 attend Richmond Hill Baptist and 12 go to other churches of that denomination.

Other denominations accounted for 43% of the cards. These included Seventh Day Adventist, Mormon, Hebrew, Salvation Army, People's Church, Richvale Gospel Chapel, Jehovah's Witness, Dutch Reformed, Greek Orthodox, Christadelphians, Christian Reformed, Christian Scientist, Newmarket Gospel Hall, Westwood Gospel Hall, Pentecostal, United Missionary, Free Methodist and Nazarene.

No one was more surprised at these figures than the officials of the churches concerned. In the case of St. Matthew's United Church with a membership roll of 450, the survey (counting two adult members from each home) would indicate a membership of 924. Other churches indicate in their cases survey figures have about the same percentage to the actual enrolment.

Students' Xmas Card Sale Aids Retarded Adult Training Centre

In just two evenings, November 1 and 2, area high school students, organized by their student councils, sold over 50,000 Christmas cards for the York Central Association for the Mentally Retarded.

Driving rain on both nights failed to dampen the enthusiasm of the young people who came from Bayview, Markham, Richmond Hill, Thornhill, Stouffville, Langstaff and Woodbridge High Schools.

Campaign chairman Dr. Douglas Pimlott advised that total sales exceeded \$5,300. Of this, a net profit of some \$2,600 will be available to help maintain the activities of the association's sheltered workshop where 22 retarded trainees are given an opportunity to enjoy a meaningful and useful life.

The training centre, located on Industrial Road in Richmond Hill receives no grant of any kind and must look for support to the people of the communities it serves.

"It was exciting to see how efficiently and skillfully these students planned and executed this canvass," stated Wentworth Dowell, association president.

"Their great heart for this project demonstrates the outstanding maturity of our high school students. The retarded and their parents are deeply grateful."

When funds derived from the Christmas card canvass have been allocated, Dr. Pimlott's committee will make a full report to the communities involved and to the student councils of the high schools.

Put a Liberal Classified Action Ad to work for you. Save time and money by calling 884-1105 and placing a Liberal Classified Action Ad.

Separate School Board Solving Minor Transportation Problems

Richmond Hill Separate School Board has appointed a special committee to look into the transportation system serving its schools in an effort to make routes more efficient and investigate the possibility of co-operation with other boards.

Chairman of this committee, John Pennyfather, brought the first recommendation to the board at its November 7 meeting. This was to divert the kindergarten noon bus off Bayview, west on 16th Avenue, south on Fern Avenue, east on Duncan Road back to Bayview. This recommendation was approved by the board. Three mothers from the area were present to point out the dangers to pedestrians on heavily-travelled 16th Avenue, where two youngsters have been killed recently. The mothers reported absence of sidewalks and ditches filled with water forced the children to walk on the road.

Other transportation problems on Centre Street and at St. Joseph's School had been cleared up, according to Mr. Pennyfather.

The problem on Centre Street had been with pickup time, which varied from day to day, according to parents. Mr. Pennyfather reported that they were much more understanding when it was explained to them that this route is the longest in the system, starting in Maple at 8:10 am and running through until 9 am, with pickups all over town.

"Under semi-normal conditions, we can maintain the pickup times," he advised. At St. Joseph's School, where complaints of children missing the bus, or running to catch it with no time to don their outer clothing, had been solved with

the co-operation of the principal. He had agreed to see that the children were dismissed in plenty of time to get into their winter outer garments and not arrive home still carrying over-shoes and other items of clothing.

NO ROOM IN METRO
Members of the board were shocked to learn that present indications are that there will be no room for grade 9 students from this area in Metro Roman Catholic Separate High Schools, next year. Increased enrolment from Metro will leave room for only a token number of children, possibly about five, from the fringe areas, it is forecast. The local board will investigate progress being made by a Metro committee on providing secondary school accommodation for Roman Catholic children.

WOODBRIDGE: Miss Lois McQuay, daughter of Jack and Olive McQuay, has returned home after spending 2½ years in Scotland. Lois is a physiotherapist and she worked at Edenhall Hospital in Musselburgh, 30 miles from Edinburgh. The thing she missed most was Canadian sports news, although she was able to keep in touch through Canadian Armed Forces broadcasts from Germany. Having got around on a small motorcycle in Scotland, her main problem is getting used to driving on the right side of the road.

SAVE SHOPPING STEPS
Look in the advertising columns of "The Liberal" and you will find many helpful hints to save shopping steps.

WE DO CARE FOR YOU IN SICKNESS AND IN HEALTH
That's why we are the **ONLY DRUG STORE** between Sheppard Ave. and North Bay that is **OPEN 'TIL MIDNIGHT**
• Dial 225-7719 •
L. & S. DISPENSARY
6369 Yonge St., Willowdale (1 block south of Steeles)
LOW - LOW PRICES

THE **RICHMOND INN**
Motor Hotel
Presents **Live Entertainment Nightly**
FROM MONDAY TO SATURDAY
--- Featuring ---
The Sinners
No Saturday Matinee

DAILY **BUFFET LUNCHEON**
\$1.49
PER PERSON
Hot or Cold — Have as many helpings as you wish of the Finest Food in Town
IN RICHMOND ROOM — MONDAY TO FRIDAY
12 NOON TO 2.30 P.M.

RICHMOND INN
MOTOR HOTEL
Phone 884-1101
YONGE STREET SOUTH, RICHMOND HILL
Book Now For Christmas Banquets

RICHMOND HILL LIONS CLUB
BINGO
BIGGER PRIZES
Monday, Nov. 13
Lions Hall Starting Time 8.00 p.m.
EARLY BIRD GAMES APPROX. 7.40 P.M.
57 NO'S CALLED — \$475. JACKPOT

York MOH
Heart Attack
York County Medical Officer of Health Dr. B. C. LePage was reported doing well Wednesday in York County Hospital, Newmarket, after suffering a heart seizure.
Dr. LePage was stricken around 4 am Friday morning of last week at his home and was immediately taken to the hospital. He was placed under intensive care.
Taking over Dr. LePage's duties during his absence is Assistant MOH Dr. M. M. Law.

COMING EVENTS

BINGO — THURSDAY night 8 p.m. sharp, jackpot; — 4 special and 25 regular games. Our Lady Queen of the World Hall, East side of Bayview at Crosby Ave., Richmond Hill. tfc39

NOVEMBER 11, SATURDAY, 1 - 4 pm. Centennial Shoppers Paradise Bazaar at St. Matthew's United Church.

NOVEMBER 10, FRIDAY, 8.30 pm. to 1 a.m. Richmond Hill Police Association Annual Fall Dance, Lions Hall, Centre Street East, Refreshments — Door Prizes — Buffet — Dancing to The Hi-Hats. Admission \$7 per couple. Everyone welcome. clw19

NOVEMBER 11, SATURDAY at 2 pm Centennial Fair at Maple United Church. clw19

NOVEMBER 11, SATURDAY Rummage Sale by Thornhill Women's Institute at Emmanuel Church, MacKay Drive, Richvale. 12.30 to 2.30 pm. clw19

NOVEMBER 11, SATURDAY, 1.30 - 4.00 pm. You are invited to attend York Manor Auxiliary Christmas Bazaar and Tea. Residents' handicrafts, home baking, aprons and tea. Draws and door prizes. clw19

NOVEMBER 13, 20, 27, MONDAY, 8 p.m. York North Chapter Barbershoppers, special membership drive. "Come out and Sing ye Bathub Baritones." St. John's Anglican Church south of Gormley Side-road. For information and/or transportation, Bob Cunningham, 884-6397; Bob Mallory, 884-4358. clw19

NOVEMBER 16, THURSDAY, 8.15 p.m. Euchre, Community Hall, Victoria Square, sponsored by the East York District Women's Institute. Everyone welcome. Good prizes. clw19

NOVEMBER 17, FRIDAY, 8 pm. Richvale Lionettes Euchre, Community Hall, 31 Spruce Avenue. c2w19

NOVEMBER 18, SATURDAY, 2-4 pm. Poinsettia Tea and Bazaar, Emmanuel Anglican Church, MacKay Drive, Richvale. c2w19

NOVEMBER 25, SATURDAY, Centennial Bazaar, Bake Sale and Tea. Carrville United Church — 2-4 pm. Sponsored by Carrville U.C.W. c3w19

SALE REGISTERS
NOVEMBER 9, THURSDAY — Two-Light Auction Sale at 6.30 p.m. sharp for Mrs. Barbara Harris, rear No. 25 Keele St. S., Maple, Ontario. Antique furniture, old cast iron pieces, old electric fixtures and parts, china, crystal, glass, household goods and misc. items of interest to all. A real picker and poker's paradise. Parking across from property. Gord Orr, Auctioneer. clw19

NOVEMBER 11, SATURDAY, at 12.30 pm. Auction sale of grade Holstein cattle, hogs, hay and grain, straw, farm equipment, furniture and miscellaneous items, including two apple butter copper kettles, buggy, etc. For William Marwood, Lot 24, Concession 5, Township of Vaughan, 1½ miles west of Maple, 1 mile north (a Century Farm). Alvin S. Farmer, Gord Orr, auctioneers. clw19

NOVEMBER 11, SATURDAY, Clearing auction of brick and portable school being No. 7 Public School on Don Mills Road at 19th Avenue, with approximately ¾ acre of land on a treed lot (known as the Gormley school). Sale starts at 1.30 pm. For more details phone Markham School Area No. 2, office phone 887-5267. Atkinson and Wilson, Auctioneers. clw19

NOVEMBER 18, SATURDAY — Auction sale of good household furniture, appliances, dishes, utensils, glassware, ornaments, rugs, bedding, sportsman's supplies, boat, motor, handyman's, joiner's, garden tools etc. at No. 12 Thornhill Avenue, just west of Yonge St. Village of Thornhill. Being the property of MRS. GRACE TAYLOR, sale at 1 pm. Terms cash. No Reserves, as proprietors going back to Scotland, S.A.P. See sale posters for full listings, and particulars.
Ken & Clarke Prentice, Markham 640-3686 or 294-2419, auctioneers. c3w18

MORLEY'S FOODLAND
29 Yonge St. S. — Richmond Hill

MITCHELL'S
APPLE SAUCE
3 20 oz. Tins **63¢**

REGULAR GRIND
Maxwell House COFFEE
1 Lb. Bag **77¢**

OLD SOUTH FLORIDA PURE
ORANGE JUICE
3 48 oz. Tins **\$1.00**

GOLD SEAL FANCY QUALITY LIGHT
CHUNK TUNA
3 6½ oz. Tins **87¢**

FLORIDA
At Their Best **GRAPEFRUIT 10** Size 48's **79¢**

Ontario Fancy Red Eating and Cooking
Courtland **APPLES**
6-Qt. Bskt. **59¢**

California Fancy GREEN
CELERY
Jumbo Size 24's **29¢**

"FRESH" LEAN MEATY
SPARE RIBS Lb. **59¢**

PEAMEAL
BACK BACON
Sliced or by the Piece **79¢** Lb.

Maple Leaf Sweet Pickled "Extra Lean"
COTTAGE ROLLS
½ Cryovac **59¢** Lb.

The whole town is talking about the savings at Barth's...

SELF-SERVICE Drycleaning Department

In less than one hour (while you shop) your garments become fresh and clean again. An expert counsellor is always on hand to help with your cleaning problems. It costs only \$2.50 for an eight pound load.

Gather up your soiled garments — dresses, slacks, skirts, double-knits, coats, ski-jackets, sweaters, etc., and make the greatest discovery of this age, **DO IT YOURSELF DRYCLEANING**, where your garments are cleaned by themselves in fresh clean solvent.

TRY IT AND SEE FOR YOURSELF Big 8 Lb. Load Only **\$2.50**

Barth's 1 Hour CLEANING CENTRE

YONGE & LEVENDALE | RICHMOND HEIGHTS CENTRE

OPEN MON. TO FRI. 7.00 A.M. - 9.00 P.M. | SAT. 7.00 A.M. - 6.00 P.M.