

PHILCO
TV - APPLIANCES
NORDMENDE
RADIOS - STEREOS
DUAL, A.G.S.,
ELECTRA, ETC.
TAPE RECORDERS,
TAPE, ETC.,
SALES - RENTALS
POLYDOR
RECORDS
CATALOGUES, ETC.
HERRIDGE
42 Leventdale Rd.



MR. AND MRS. JOHN O'NEILL SIGN REGISTER

Wed In Our Queen Of The World Church

White chrysanthemums formed the setting in Our Lady Queen of the World Roman Catholic Church for the nuptial mass sung by Father F. C. Robinson, parish priest, on October 9, which united in marriage Mary Ann Theresa McConvey and John Michael O'Neill. The bride is the daughter of the late Paul J. McConvey and Mrs. Mc-

Convey of 333 North Taylor Mills Drive, Beverley Acres, and the groom is the son of Mr. and Mrs. John O'Neill of Peterboro.

The bride, a 1961 graduate of Bayview Secondary School, is a registered nurse and was on the staff of York Central Hospital; the groom is employed by Ontario Hydro.

Given in marriage by her brother, James Paul McConvey, the bride entered the church to wedding music played by John Ingram. She wore a traditional gown of white peau de soie with lace appliques on the bodice and down the front of the skirt. It was fashioned with a scoop neckline and elbow length sleeves. She carried a bouquet of a white orchid, small white chrysanthemums and stephanotis.

Judi McConvey was her sister's maid of honor and June Samanski was bridesmaid. Both were gowned in jade green chiffon over taffeta fashioned on the

Empire line with a floor length sheath skirt. Their headpieces were made from jade green petals with a matching veil and their bouquets were of white and jade green chrysanthemums.

Harold O'Neill of Pointe Claire, Quebec, was groomsman for his brother and Jack Crowley and Peter Minnicola were ushers.

The 80 guests were received at the Richmond Inn by Mrs. McConvey wearing a gold crepe sheath gown, beaded in matching color. A gold colored tulle turban, gold shoes and bag completed her ensemble. Mrs. O'Neill assisted, gowned in a beige sculptured wool sheath with claret velvet turban, shoes and bag.

Following a wedding trip by motor through Vermont, Mr. and Mrs. John Michael O'Neill have taken up residence in Cooksville.

New County Bldg. Said Needed Soon Plus Add'n To York Manor

Two out of three reports made at last week's meeting of York County Council were not approved by council, but merely accepted and referred to next year's council.

A committee appointed at the November session to study office requirements for the new assessment commissioner and his staff recommended a short term solution to the lack of office space which would give the assessor his present office plus one committee room; have other departments and council committees co-operate in using council chambers and available committee rooms; have the Toronto and York Roads Commission meet in the entertainment room; use the CAS and health unit; have the basement lunch room for staff and committee meetings held during the day; have county committees use the entertainment room, council chambers and present CAS room for their meetings.

These measures will be necessary until the health unit moves into its new building next spring. County Clerk J. L. Smith, who was a member of the study committee, reported that the assessment commissioner, who is adding 15 persons to staff, advised that he could carry on until the health unit moves out and after that, accommodation available in the building should be sufficient for the next 18 months.

After that time, it is expected that a new building will be required to accommodate all the county staff. The present county building was erected in 1957.

The committee also recommended that a Needs Study Committee be appointed by the 1966 council to determine space requirements of all departments

of the county for the next five years, and that a survey of the population of the county, including all age groups, be made as guide for the building committee.

The final recommendation of the committee was that a new wing be built at York Manor Home for the Aged to accommodate 50 additional residents.

York Manor is filled to capacity at present and has a small waiting list. Architects have advised that a new wing could be added to the west of the present building and that present heating, dining, kitchen and laundry facilities would be adequate to serve it.

The report of the hospital building committee recommended that all new furnishings be purchased to equip the new health unit building which is expected to be ready for occupancy by the end of next April.

Previously, the York County Board of Health had passed a resolution that as much as possible of the present health unit furniture be used in the new building and that additional furniture be purchased on the health unit budget.

However, feeling that if the health unit moves out of the county building taking its furniture with it, new furniture will have to be purchased for the departments moving into the space formerly occupied by the health unit, the hospital building committee suggested that new furniture should be purchased to go in the new building.

Estimated cost of new furnishings is \$16,000 before grants, or a net of \$9,000.

An amount of \$10,000 had been budgeted for x-ray equipment but this has now been obtained by the health unit through a federal grant.

Children's Wear Brands known for quality and value

CHILDREN'S
fashion shop

RICHMOND HEIGHTS
CENTRE, YONGE ST.
Richmond Hill - 884-7474

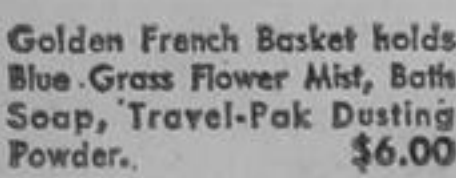


RAMER FUELS
189 CENTRE ST. EAST
884-1313

Elgarth Arden
CHRISTMAS TREASURES



Blue Grass Basket—a flourish of flowers and ribbon and a treasure of Bath Soap and Travel-Pak Dusting Powder. Also in June Geranium. \$2.50



Golden French Basket holds Blue Grass Flower Mist, Bath Soap, Travel-Pak Dusting Powder. \$6.00



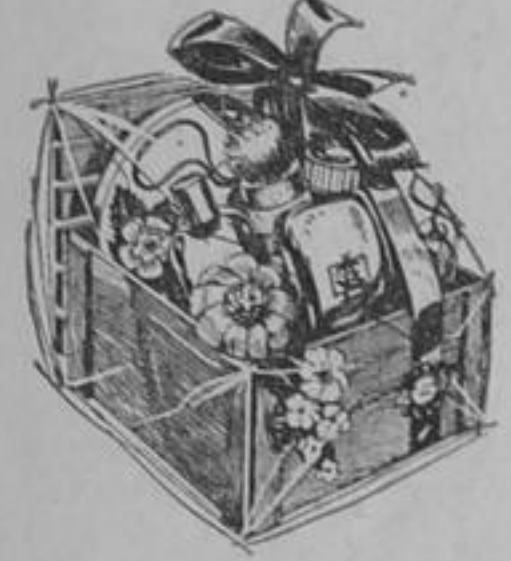
Gift Set combines two bathing beauty favorites: Perfume Spray and Luxurious Dusting Powder in Blue Grass or Mémoire Chérie. \$8.00



Champagne Basket filled with fragrant gifts. Blue Grass Flower Mist, Petal Wafers, Hand Lotion, Puff-Puff Dusting Powder, Heart Soap. \$8.50



Blue Grass Crate, all set to ship to friends far and wide, a miniature crate stashes away Perfume Spray, Dusting Powder, Hand Lotion and Hand Soap. \$10.00



Blue Grass Wagon—presents by the cartload fill this little wagon... Perfume Spray, Fluffy Milk Bath, Hand Lotion, Soap, Dusting Powder Puff-Puff. \$12.00



Holiday Basket gay with flowers. Blue Grass Fluffy Milk Bath, Perfume Mist, Flower Mist, Dusting Powder, Bath Oil Vial, Hand Lotion, Hand Soap. \$20.00



De Luxe Basket brimming with Fluffy Milk Bath, Perfume Spray, Dusting Powder, Bath and Body Perfume, Petal Wafers, Flower Mist, Hand Lotion, Bath Soap—all in Blue Grass fragrance. \$25.00



MAINPRIZE DRUGS
DALE L. KENZIE, B.Sc., Phm.
48 YONGE ST. NORTH
Richmond Hill 884-1017

KRESGE'S

RICHMOND HEIGHTS CENTRE OPEN DAILY TO 6 P.M.
WED. & THURS. 'TILL 9 P.M.

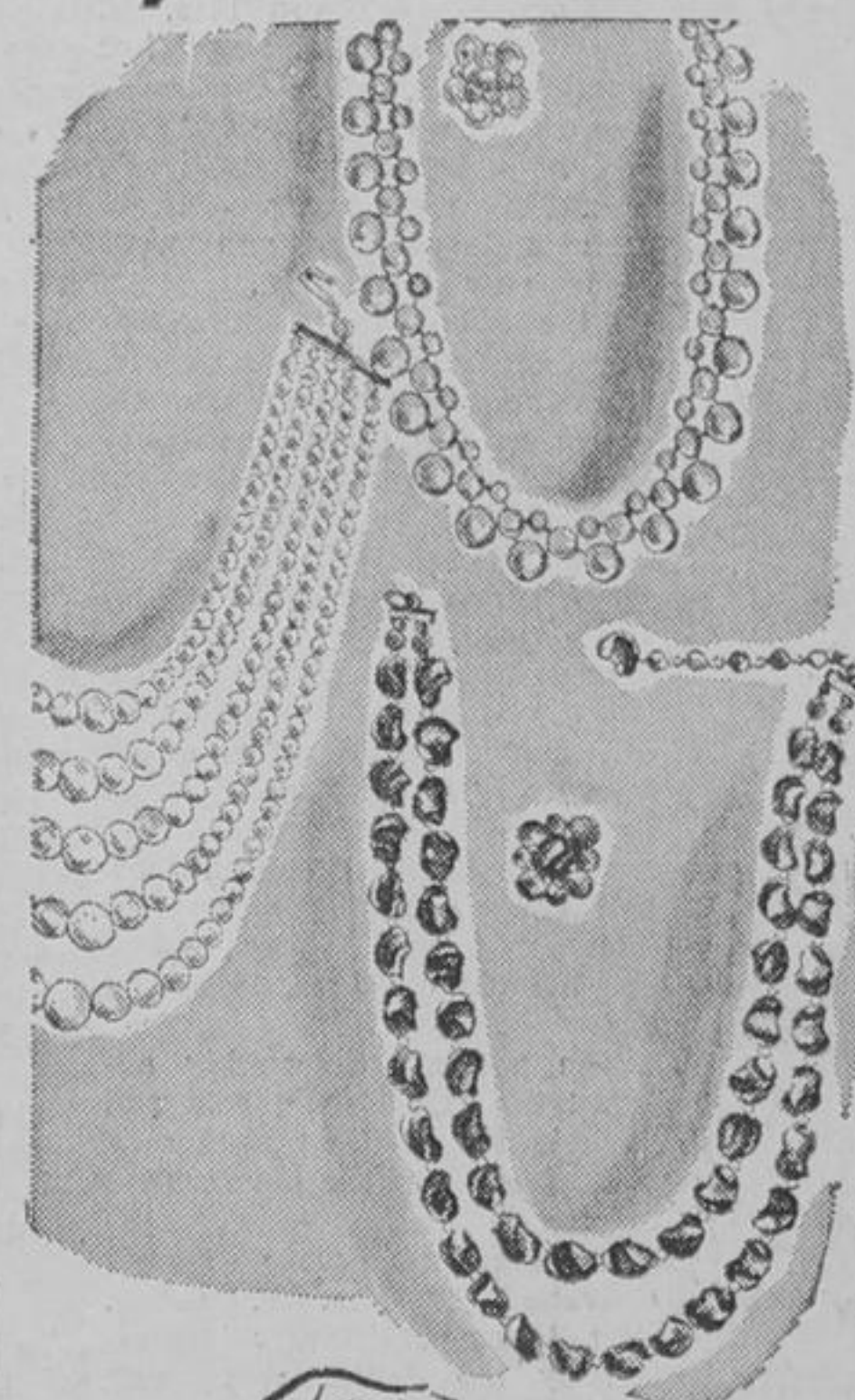
YEAR END SPECIALS Sale Commences TUES., DECEMBER 28



CLEARANCE JEWELLERY!

Many fashionable 1 or 2 strand necklaces with matching earrings. Glittering brooches and earrings and attractive armbands. There is something here for every occasion.

YEAR END SPECIAL 57¢ each or 2 for \$1



LADIES' Cotton Blouses

A large range of sleeveless packaged shirt blouses in white or various prints from which to choose. Each in convenient poly bag. Sizes 12 to 20.

HALF PRICE SALE
2 for \$1.47



TOP HIT LP'S OF 1965

The Arch Sound presents The Shadows singing all the top tunes on every station's chart. You'll hear 'Beatle' sound, Nashville sounds and New York sounds the way you like them. Buy now at this tremendous offer.

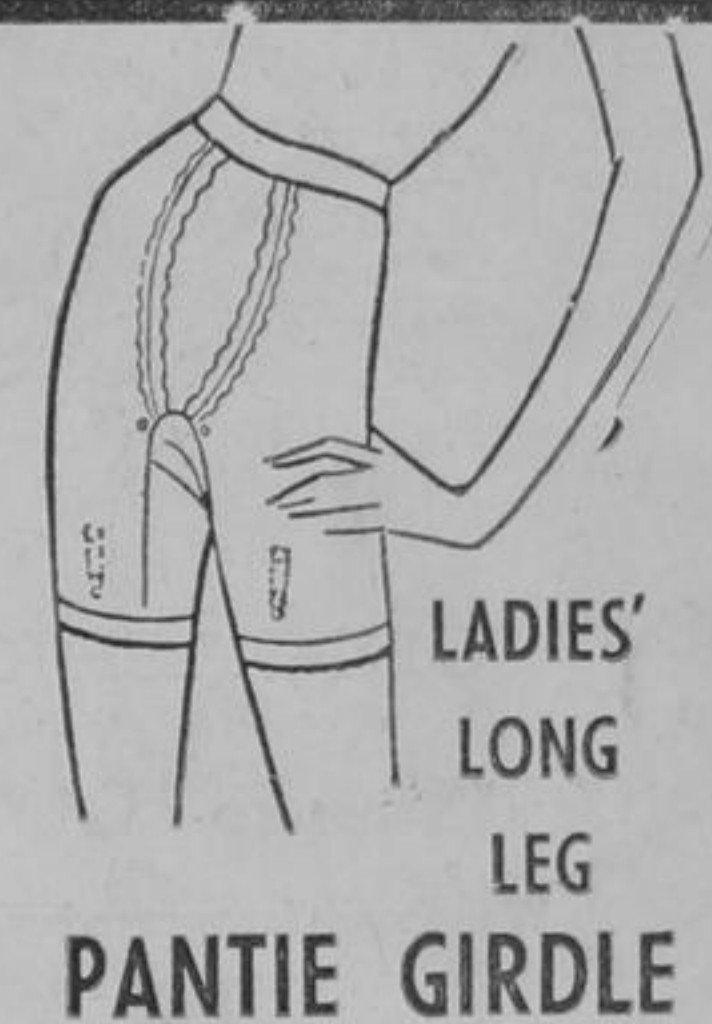
SPECIAL YEAR END 57¢ or 2 for 99¢



LADIES' PYJAMAS

Choose from Printed Flannelette Pyjamas in pink and blue colours. Sizes 32 to 40. OR Printed and Plain Tailored Flannelette Pyjamas in various floral prints, gingham, stripes and plain colours. Sizes S-M-L.

YEAR END SPECIAL \$1.94 each



LADIES' LONG LEG PANTIE GIRDLE

Lyca Powernet Girdle with Satin panel front with dainty design, rayon gusset and 4 detachable garters. Sizes S-M-L.

YEAR END SPECIAL \$2.88



LADIES' HEAD SQUARES

These come in so handy to keep hairdos neat and tidy. Many attractive designs and colours available to match your wardrobe. Approx. size 27x27".

YEAR END SPECIAL 3 for 87¢



Girls' SKI JACKETS

These are ideal for the Skiing Enthusiast. Plain Quilted Nylon Jacket with roll-away hood, 2 zipper pockets, knit cuffs, Rayon lining and Heavy duty zipper down front. Sizes 7 to 14 in red, royal, open and black colours.

YEAR END SPECIAL \$3.99



PLAYING CARDS

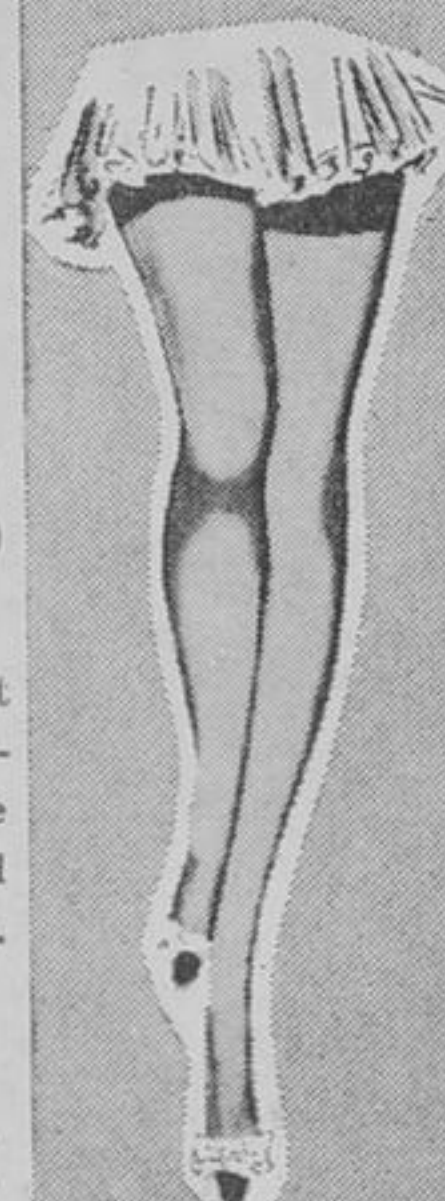
Stock up for those long Winter nights. Air-Cushion Finish cards available in Standard and Bridge sizes. Buy now at this low, low price.

YEAR END SPECIAL 2 for \$1.00

Ladies' Substandard Nylons

Seamless Hose with slight defects. Each pair in attractive poly bag. A large assortment of sizes and colours for your selection.

YEAR END SPECIAL 3 for 87¢



COFFEE MUGS

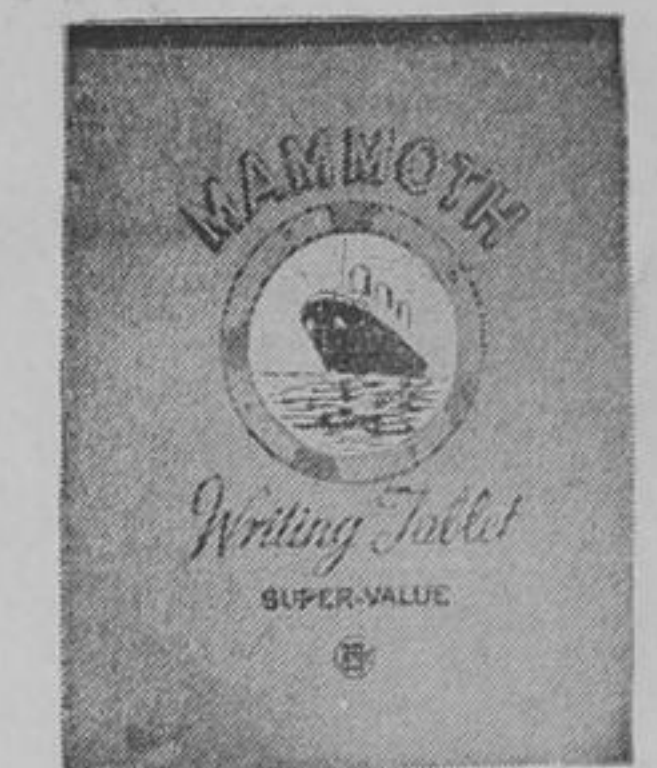
Earthenware Coffee Mugs in cute PAW and MAW designs, speckled, white drip or inside and outside coloured designs. The choice is yours.

YEAR END SPECIAL 4 for 77¢

COMBINATION NOTE PACKAGES

Assorted Friendly Notes, Flower Notes and Small Floral Notes. Each package contains: 8 folded decorated sheets and 8 matching envelopes. Each package is fully cello wrapped.

HALF PRICE SALE 2 pkgs. 25¢



Writing Tablets

Now is the time to write to Friends and Relatives letting them know how the Festive Seasons were passed.

Mammoth Note Pads 150 sheets 17c

Mammoth Letter Pads 150 sheets 29c

Blue Lined Envelopes 40 to package 21c

Old Harmony Envelopes 40 to package 21c

SATISFACTION GUARANTEED OR MONEY CHEERFULLY REFUNDED