



(Photo by Stuart's Studio)

Hats, Fashions, Desserts Feature Luncheon

Modelling 1965 fashions at March 10 dessert luncheon and hat and fashion show are (left to right) Mrs. George Irwin wearing a navy blue silk double knit three-piece suit with blue velvet petalled hat in cloche style with narrow brim; Mrs. William Babcock, in a raspberry linen two-piece dress with fine white straw hat bound in black velvet; and Mrs. Harry Sayers in a black and white tweed two-piece suit, bound in black wool and a small red roll-away brimmed hat, trimmed with black silk braid. They are admiring the flower-banked bird-bath which formed the central part of the effective spring decorations for the event held in the Christian education building of Richmond Hill United Church.

More than 200 women forgot to count calories as they enjoyed the delectable and delicious confections offered for their choice at the annual dessert luncheon and hat and fashion show.

Seven ladies from the sponsoring group modelled fashions by Patricia White, hats by Georgina Spearn and furs by Ken Stiff Furs. Mrs. Ian Kerr, Mrs. George Irwin, Mrs. George Fenwick, Mrs. Harry Sayers, Mrs. William Babcock, Mrs. D. Bain and Mrs. W. Boone were the models who chose basic costumes to which Mrs. Betty McConvey, manageress of Patricia White Shoppe added hats which made them suitable for daytime wear, for weddings or other special occasions.

Mrs. McConvey stressed the importance of a hat in completing a costume and giving the impression of being well-dressed for every occasion.

Mrs. Boone chose a two-piece double knit silk dress in honey beige, which was trimmed with silk braid of the same shade. In one appearance she wore an oatmeal colored coat of basket-weave wool, fashioned with dolman sleeves.

Mrs. Bain's three-piece suit was a blue and white tweed effect 100% pure wool double knit in boucle finish. Mrs. Fenwick wore a pure white wool suit with brass-trimmed buttons and Mrs. Kerr's suit was of multi-color double knit wool.

With this she wore a yellow all-weather coat on her first appearance. Douglas Booth described the many furs displayed by the models for Ken Stiff Furs. Hit of the showing were two new treatments of muskrat. One jacket featured black-dyed muskrat which resembled sable and another bleached to a beautiful beige was easily confused with beaver but sells at muskrat prices. Mink in almost every conceivable shade was featured in stoles of all sizes for all figure types, and Mrs. Irwin wore a flattering full length coat of black broadtail.

Concluding number in the fur display was described as being for the woman who has everything. It was a black sequined jacket with black dyed fox collar and cuffs.

Mrs. Flo Nesbitt, beauty counsellor, was in charge of the make-up and presented gifts to several lucky women. Mrs. William Dods who was celebrating her birthday that day, was winner of a prize voucher donated by Georgina Spearn.

Mrs. R. E. McMonagle, convenor and other members of the Tuesday Evening Unit of UCW the sponsoring group, handled all details in a most creditable manner and coped capably with the crowd which was greater than they had anticipated or prepared for. Even then there was no shortage of desserts of infinite variety, and everyone present was able to see and enjoy the lovely new fashions presented by local merchants.

Little Damage Caused By Storm Despite Gusting Winds Up To 55

Despite raging winds, swirling snow, and rain, the storm that hit Richmond Hill and surrounding area Wednesday night of last week did relatively little damage. Police reported that as usual their main problem was in traffic, with motorists either getting bogged down in the snow, or else running into each other in a series of minor accidents.

Road department officials in Richmond Hill and Markham Township, said that road graders were out working soon after the storm on a 24-hour basis to keep the highways open, the roads being the main facility inconvenienced at the time.

L. J. Roy, Ontario Hydro, manager for this area said there was little in the way of hydro damage in the area.

He said there was the "odd farmer" who experienced some difficulties with his lines, but not enough to cause any noticeable lapse in power.

A spokesman for the hydro in Richmond Hill said the town had escaped any electrical trouble during the storm. According to the federal meteorological office in Toronto, average rate of speed of the wind was 43 miles an hour, with gusts up to 50 and 55.

In Richmond Hill, two business places reported slight damage.

Ken Brown, manager of Guaranty Trust Company of Canada, 44 Yonge Street South, said that a small portion of shingling on the northern portion of the roof had been uprooted, but it was discovered before any snow damage could be done inside.

Bing Lew, proprietor of Town Inn Restaurant, 30 Yonge Street South, said that the sign above his take-out service next door to his restaurant, had to be taken down at the height of the storm when it looked as if it might become unhinged from its moorings.

A small sign outside the town hall was dislodged by the wind, as were several town notices tacked to telephone poles, warning trucks about half loading.

The roads department reported all roads open after all-night clearing by town graders, with morning crews working at keeping the snow back from the curbs.

King Township reported several minor accidents, with some roads plugged, while Whitchurch and Markham Township officials said they had come through with all lines and buildings intact.

Heaviest hit was Vaughan Township, which reported telephone poles down in the Concord area, with one of them glancing off a house.

A service station at Roosevelt and Yonge Streets had several windows blown out.

One major accident occurred at Keele Street, two miles north of Maple about 6.15 p.m., when a car driven by Sydney W. Lewis, 55, of 48 Garden Avenue, Langstaff, emerged out of a "snow squall" into the back of a vehicle driven by Kenneth A. Hurley, 43, of 60 Charles Street, King City.

Damage to the two cars was estimated at \$500.

ONE STOP PARTS and SERVICE

Moto-Master "Extra-Life" **MUFFLERS** **7.23** INSTALLED CHEV., PONT. 1954-64 Most

FAST, INSTALLATION BY EXPERTS
Moto-Master Mufflers — designed to give more power, greater gas economy, longer life. **BIG DISCOUNTS** for other cars

LIFE-TIME GUARANTEE You get a brand new muffler if it blows out — ever! The replacement muffler is yours, without cost.

FREE, FAST EXHAUST CHECK
Don't take chances, your exhaust system may be defective without being noisy, so have it checked by Canadian Tire experts without cost or obligation.

Shock Absorbers

GUARANTEED 18,000 MILES OR 18 MONTHS

4.30 to **4.75** ea.

Most Popular Cars

Moto-Master Shock Absorbers put you in control of your car — for a safer, smoother ride — at every speed, on any road.

SAVE ON FAST, EXPERT INSTALLATION

BRAKES RELINED

13.95 ALL 4 WHEELS

MOST MODELS—Chev., Pontiac, 1951-58; Ford, Meteor, 1949-59; Dodge, Plymouth 1949-56.

BIG SAVINGS FOR OTHER CARS —

For example: Chevrolet, Pontiac, 1959-64. ALL 4 WHEELS **14.95**

Certified mechanics carefully check entire brake system—PLUS many safety extras.

SAVE SAFELY — AT CANADIAN TIRE

'1964 Outstanding Year In Township' Markham Police Chief

Markham Township Police Chief Henry Cox, told council 1964 had been an "outstanding year," so far as the police were concerned, when he presented his annual report, last week.

The chief said it had been a year in which the rate of break and enter and theft cases solved, compared favorably with the number reported.

There were however, eight fatal accidents in the township, two on township roads and six on county thoroughfares. Involved were two pre-school children on foot, two passengers and two drivers.

There were 106 people injured in 293 accidents, and a total of 400 charges laid under the Highway Traffic Act. Charges under the Liquor Control Act were 166.

Other occurrences during the year amounted to 409.

Chief Cox said the police communication system, which last year handled 11,161 calls, had been completely revised, and the 10-year old to-way radio system had been replaced.

Cost of cruiser operation for 156,275 miles was \$7,678, while the by-law office and school safety program amounted to \$6,768.

Department strength remained the same at 17 men and two clerks.

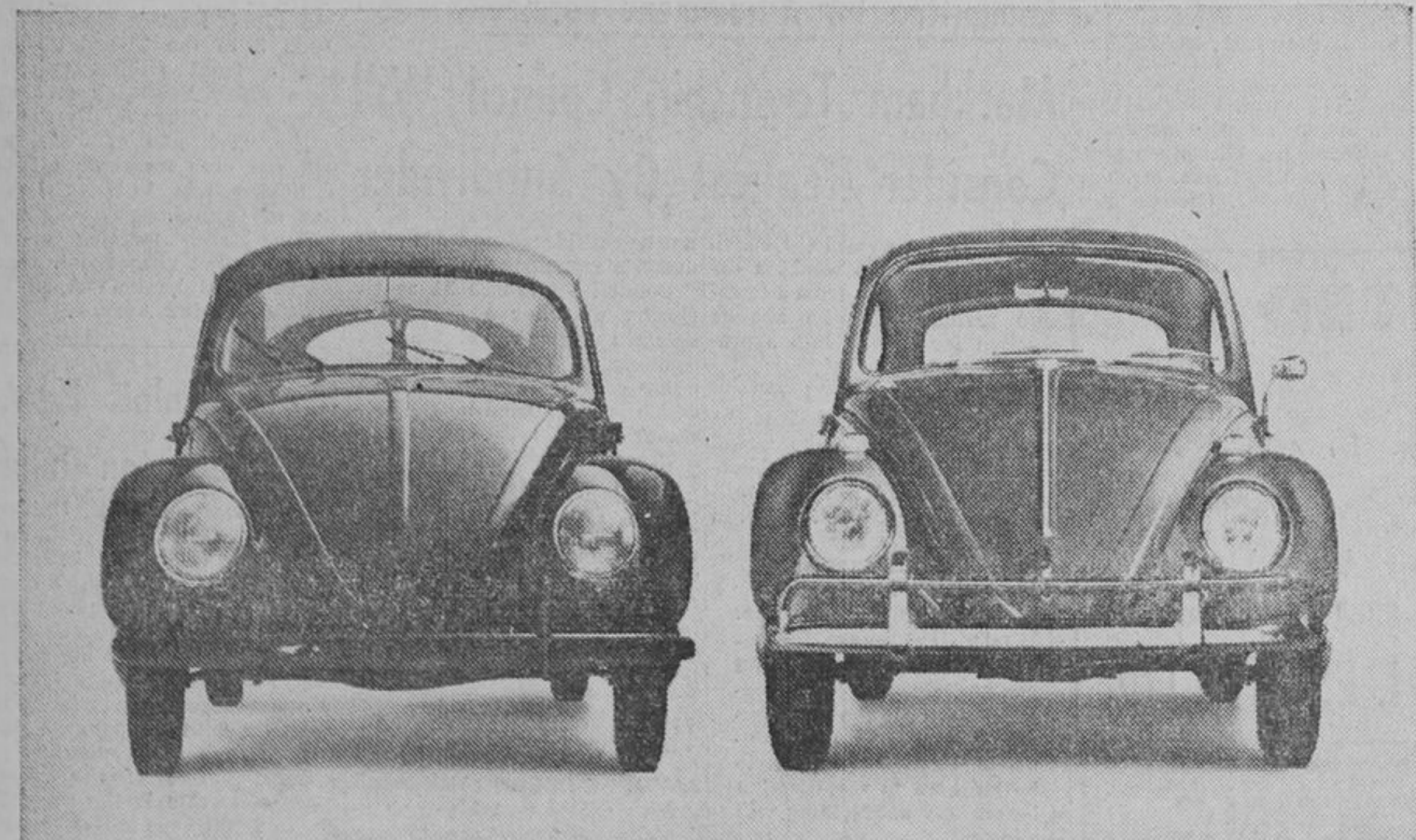
An honor to the department was the presentation of an outstanding instructor certificate to Sergeant R. Hood by the St. John's Ambulance Association, Chief Cox said.

V. O. N.

VICTORIAN ORDER OF NURSES
RICHMOND HILL BRANCH

Mrs. W. O. Stockdale
884-4101

Richmond Hill Municipal Hall
SERVING RICHMOND HILL, MARKHAM TOWNSHIP, VAUGHAN TOWNSHIP.



The only difference between these two cars is 27 years and 2,109 improvements.

Which is why you see so many VWs. And still have trouble telling which model year you're looking at. When we improve the Volkswagen, we don't fool about with the style. We work on the works. For good reason. For instance, in 1952, we put vents on the front side windows. And in 1956, we redesigned the gas tank so you'd have more luggage space up front. We made first gear synchromesh in 1961. To let you shift down from second to first without stopping. (We made a lot of lady drivers happy with that one.) What about this year? Well, there are 17 improvements for 1965 alone.

Every single window on the '65 VW is just a little bit bigger. The back seat folds down so you can use the entire rear of the car for suitcases and such. The steering assembly is completely maintenance free. We made our windshield wipers to do a better job. So although the Volkswagen may look the same to you every year, it does change. A fender from that '65 VW will bolt easily onto that 1938 model. That way, if you drive an old VW and something wears out, you don't have to worry about getting parts. And if nothing wears out, you don't have to worry about the shape you're in.



W & P SERVICE, 178 Yonge St. N.—Tel: TU. 4-4221 Richmond Hill; AV. 5-3591 Toronto

1-OUTLET BOX MOUNTING BAR — For 12 to 18" centres	.29	6-CEILING RECEPTACLE — For 3 1/2" or 4" outlet boxes. Bakelite. For use with wall switch	.39	Heavy duty. Brown bakelite	.39
2-OUTDOOR OUTLET—Grounded duplex receptacle in weatherproof metal box. Complete lid and gasket only	4.69	7-CEILING RECEPTACLE — (as above), but with pull chain	.64	11-WALL PLATE — For single toggle switch. Brown	.08
3-PLAIN COVER — For 4" outlet box	.13	8-KNIFE SWITCH BOX — 30-amp., 110-120 volt, 2-blade, 2-fuse	3.13	12-DUPLX OUTLET PLATE — Brown	.08
4-OUTLET BOX — with knockouts 3/4"	.35	9-TOGGLE SWITCH — Brown bakelite	2.49	13-ROMEX TYPE WIRE — Two wire plus ground. Braided 14-gauge. per ft. 12-gauge per ft.	.06 .08
5-SWITCH BOX — with clamps	.42	10-DUPLX RECEPTACLE — Brown bakelite	.21 .16	14-OUTLET BOX CONNECTOR — For Romex, etc.	.12

LAWN-MASTER GARDEN SUPPLIES

8-FT. LONG TREE PRUNER

8-ft. long hardwood handle. Ideal for high-up pruning. Tempered steel jaws cuts branches up to 1" thick. **5.99**

LOPPING SHEARS

Precision-ground carbon steel blade and serrated hook. Hardwood handle. 27 1/2" over-all. **3.69**

PRUNING SHEARS

Tempered, full polished blades. Ratchet adjustment, tempered spring and clip. 9" overall. **.79**

Lawn-Master Grass Seed

Highly vigorous for a permanent, attractive lawn. Covers 880 sq. ft. 4-lb. bag. **3.39**

BRAND NEW **KEYSTONE** 18-MONTHS GUARANTEE

6-VOLT WITH TRADE **6.95** 12-VOLT WITH TRADE **9.95**

INSTALLATION 50¢

CREDIT Is Easy At Canadian Tire

+ No Down Payment + Easy Terms
+ On The Spot Financing
+ Free 30 Day Charge Privilege

Starts March 27

Canadian Tire Associate Store

70 YONGE STREET N., RICHMOND HILL 285-1101 — 884-1196

SUPPORT THE Guides and Brownies BUY GIRL GUIDE COOKIES Starts March 27

SENSIBLE SHOPPERS CHECK LIBERAL CLASSIFIEDS FOR BIG BARGAINS