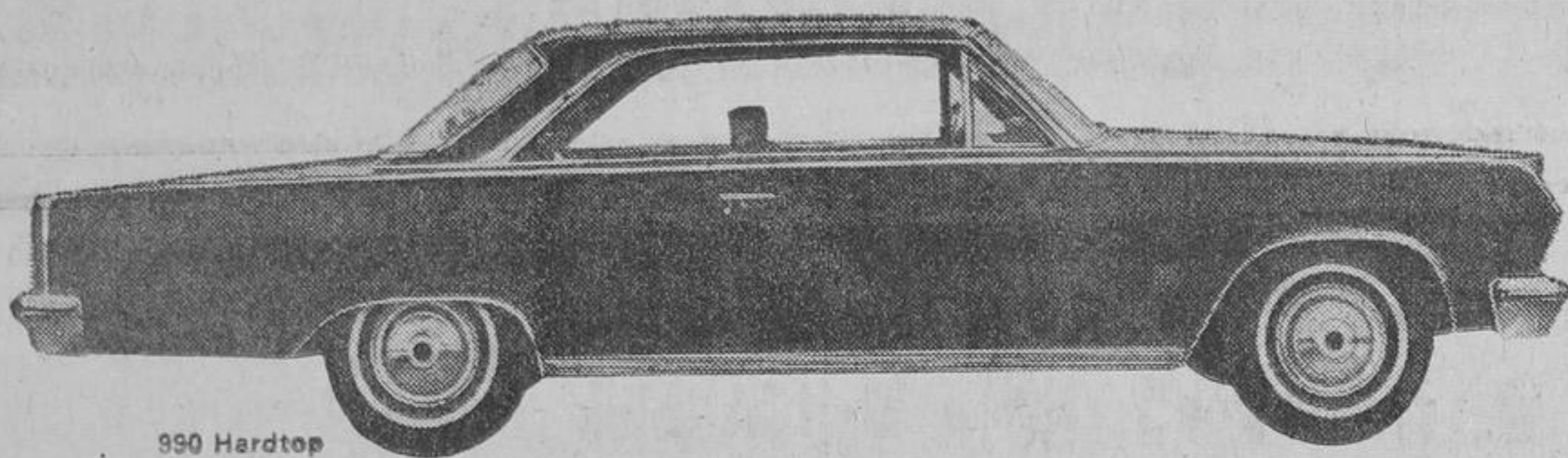


.... EACH WITH A SIZEABLE DIFFERENCE

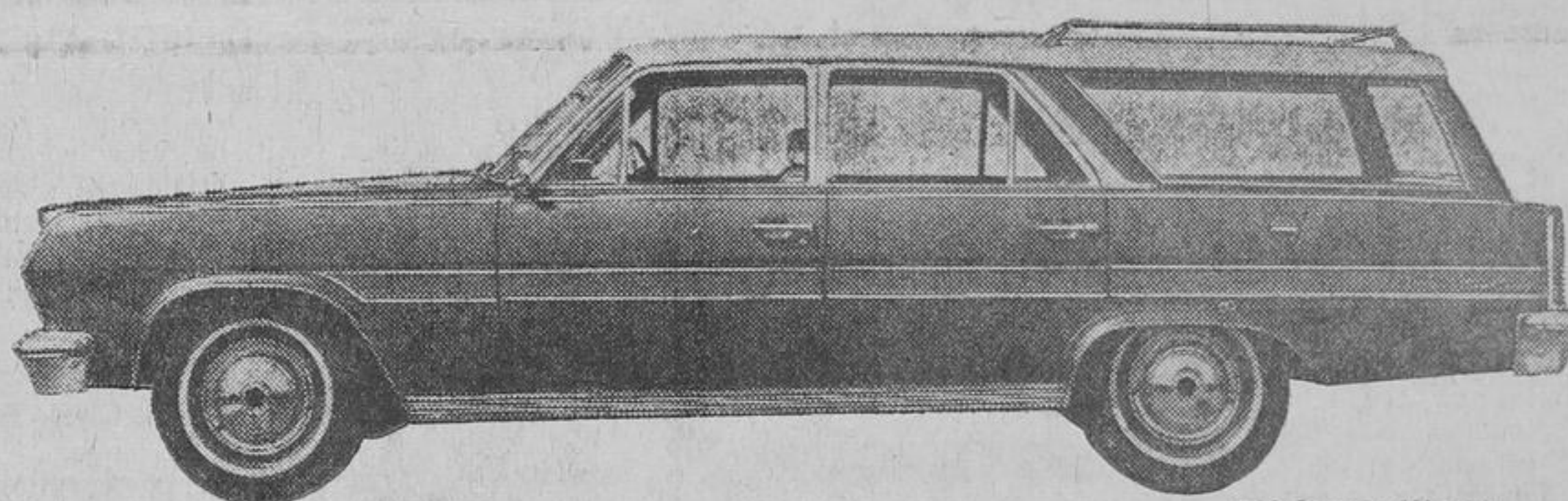
3. Want something bigger still? The 1965 Ambassador — Phase Two of the Rambler Revolution — larger in size, longer in wheelbase, designed to bring Rambler quality to the larger-car buyer



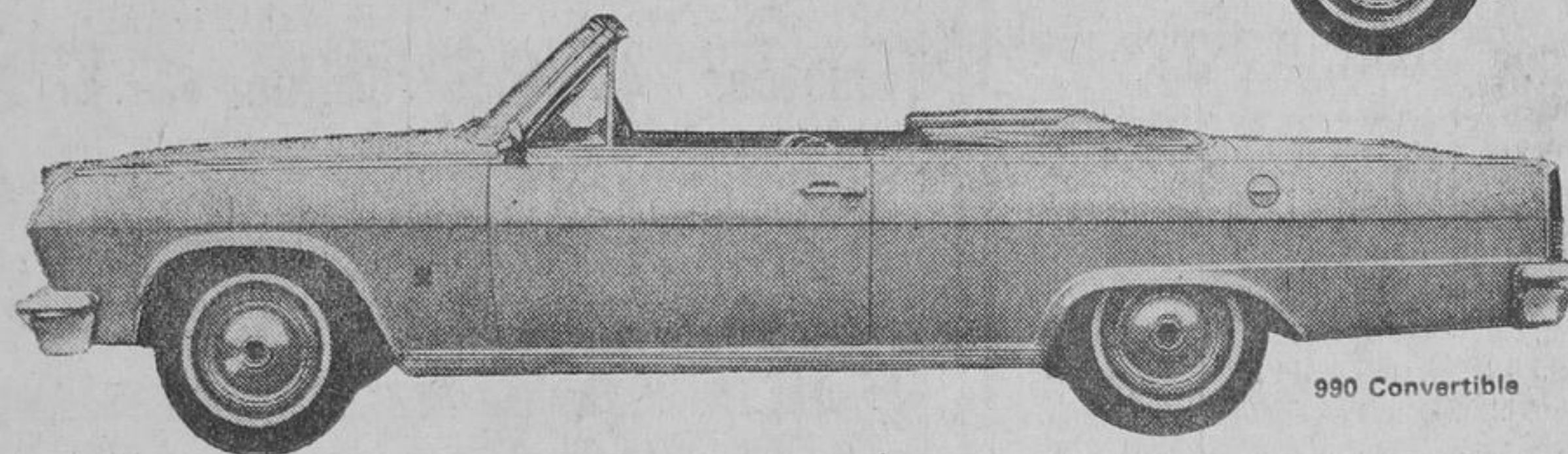
890 4-Door Sedan



890 Hardtop



890 Station Wagon

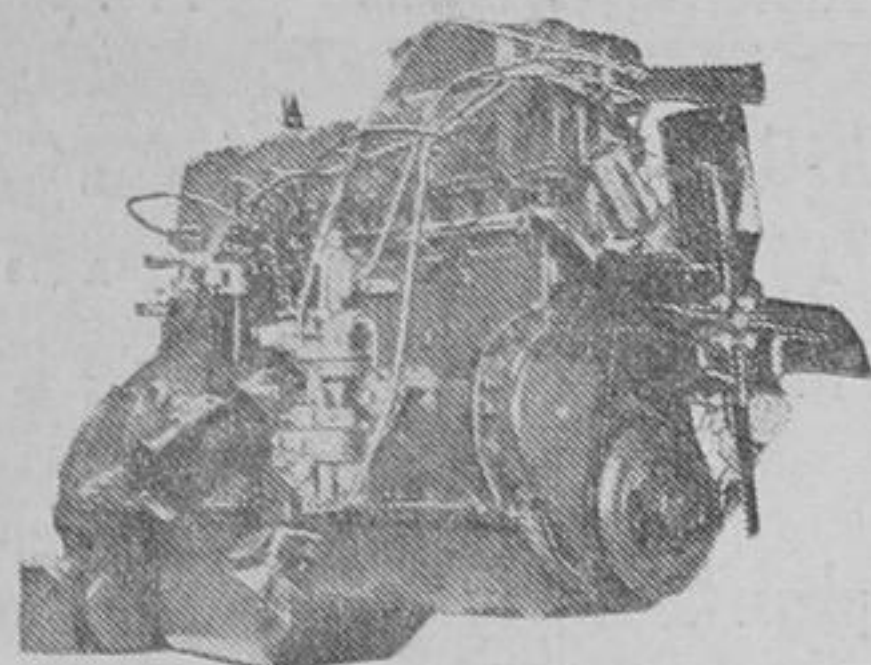


890 Convertible

The exclusive Rambler quality features and construction that made Rambler the compact leader are now available to the larger-car buyer. The luxurious 1965 Ambassador—Phase Two of the Rambler Revolution—is new in size with a longer wheelbase, new in appearance, new in performance. ■ Choose one of three great engines. Get the 155 h.p. Torque Command, the six that acts like an eight, with a new 7-Main Bearing Crankshaft and eight counterweights for amazingly vibration-free operation. Or choose a 198 or 270 h.p. V8. Powered by the 270 h.p. V8, the 1965 Ambassador will deliver consistently superior performance on street and highway. Thanks to one of the industry's best power-to-weight ratios, you'll find no better V8 for North American roads, superhighways and driving demands. ■ Look inside. You get luxurious interiors and maximum

luggage space. Interior appointments and fittings are superb. You have the industry's widest choice of comfort and seating options, including 7-position reclining seats and improved adjustable headrests. ■ You can select from a wide new range of power options and features—everything you've ever wanted, from automatic transmission and full power equipment to disc brakes and AM/FM radio. There are over 70 spectacular power options and features to choose from. ■ This is your year to go Ambassador! See Phase Two of the Rambler Revolution—the luxurious new 1965 Ambassador, bringing Rambler quality and value to a larger, longer-wheelbase car with a wide range of power options and extras. It's new in size, new in beautiful appearance, new in driving adventure. Test drive the luxurious new 1965 Ambassador at your neighbourhood Rambler Dealer's today.

WIDE NEW RANGE OF 6 & V8 ENGINES FROM RAMBLER FOR '65!



Take your pick of Rambler engines for '65—efficient sixes, powerhouse V8's, ranging from 90 to 270 h.p. Get Torque Command, the revolutionary new six that acts like an eight. Its 7-Main Bearing crankshaft with eight counterweights gives a smooth, vibrationless ride. ■ There are three great engines for the '65 Rambler American: the amazing Torque Command, plus two economical sixes. Three for the

Classic: two fast-moving Torque Command engines, plus a powerful V8. Three for the Ambassador: a responsive Torque Command, plus two brilliantly-performing V8's. ■ The wide new range of 6 and V8 engines from Rambler for '65 will give you the engine that's exactly matched to your driving needs and demands. They're yours to test drive at your Rambler Dealer's today!

NEW FOR '65: TORQUE COMMAND—THE SIX THAT ACTS LIKE AN 8!



See the new big 3 — American, Classic, and the luxurious new Ambassador — at your Rambler Dealer's today

BAKER'S SALES & SERVICE LTD.

9144 YONGE STREET, RICHVALE

AV. 5-1189