

## No Fluoridation On Ballots

(Continued From Page 1) Councillor Thomas Murphy pointed out that much water in Richmond Hill is used by industry, for laundry and lawn and garden watering, so that about two-thirds of the added fluoride would be wasted. He stressed that calcium fluoride is a poison and requires elaborate precautions to ensure safe concentration levels. He was deeply concerned whether Richmond Hill's water system which contains some forty dead-end mains is conducive to fluoride. Pointing out that in some areas chlorine concentration builds up until complaints are received that the water is like Javex, he feared that in the same areas fluoride might build up to dangerous proportions. He suggested leaving the question over to next year pending proper and full information.

Reeve Floyd Perkins agreed there is extensive chlorine build-up in dead-end mains and that fluorine would be the same. He said he would hate to see it made a political issue and any man's hope of election jeopardized by concern for his own and the community health.

Councillor Scudds asked the reeve if he favoured a mid-year plebiscite with its attendant extra expense. The reason for including the plebiscite at the annual elections was to save this expense, he said.

Deputy-reeve Stanley Tinker said that in view of the opposition expressed to him he would have to oppose a plebiscite at this time. "No one has gone out of his way to tell me he wants fluoride, but I have heard from many who are

opposed to the way in which the question is to be decided."

Councillor Alex Campbell stated that he had been forced to take iodine in his salt since he was a child. "Iodine can be poisonous too, so can too much water," he stated. "I am quite in favour of fluoride. I believe that people should have a democratic right to decide this question. I am sure we will be quite capable of adding fluoride safely to the water supply."

Councillor Scudds claimed that dental bills for his family of four children run around \$200 to \$250 a year.

Councillor Campbell said, "I wish I had had fluoride when I was two years old."

Voting for the motion were Councillors White and Murphy Mayor Neal, Reeve Perkins and Deputy-reeve Tinker. Against were Councillor Scudds and Campbell.

### Deputy To Try For Reeve Spot

Markham Township Deputy-reeve Allan Sumner stated flatly Tuesday night that if he moved up in council it would be to contest the position of reeve—not deputy-reeve—in the December election.

His comment came a few minutes after a big flare-up between himself and Reeve Charles Hooper but gave no indication as to whether this affected his decision. Further details of the differences between the two councillors are reported elsewhere in today's paper.

Mr. Sumner was involved in a reshuffle of council in late September along with Mr. Hooper as a result of the sudden death of the then reeve, Wilfred Dean. Mr. Sumner moved up to the deputy-reeve's chair from Ward 1 and Mr. Hooper vacated the deputy-reeve's position for Mr. Dean's.

It had been expected Deputy-reeve Sumner would either be running for Ward 1 or the position he presently occupies.

The election issue was touched off by Councillor Stewart Rumble who definitely said he would be contesting Ward 2. Reeve Charles Hooper reiterated his earlier statement that he would run again.

Councillor Charles Hoover was the only hesitant member but indicated he would be going for ward 3 barring ill health and if "somebody nominates me."

Then came Mr. Sumner's surprise announcement.

MARKHAM: Population here has reached 5,265, an increase of 363 over a year ago. Assessment has increased \$374,775 over the same period. The report was made by the assessment department.

\*\*\*\*\*

To Sell Antiques, Furniture, Pianos, Pet Stock—Anything! Advertise in the Want Ads Every Thursday For Fast Action Phone TU. 4-1105-6 or AV. 5-3316

\*\*\*\*\*

MARKHAM: Total value of permits issued in Markham Village in October was set at \$248,370. This included 27 dwellings. Total for the first 10 months of this year, \$1,895,182.

\*\*\*\*\*

\*\*\*\*\*

## ASK ME!

HOW MUCH YOU MAY SAVE ON YOUR CAR INSURANCE WITH STATE FARM!



James Grainger  
130 Yonge St. S.  
Richmond Hill, Ontario  
TU. 4-1529

State Farm Mutual Automobile Insurance Company

Canadian Head Office, Toronto, Ont.

NOW IS THE TIME TO...

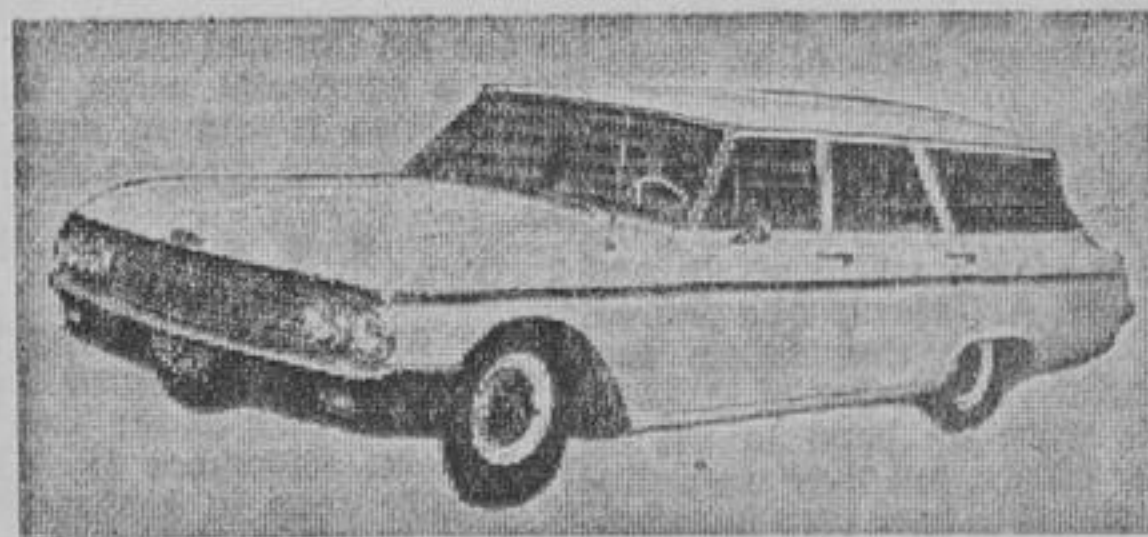
# STEP-UP

TO A BETTER USED CAR!

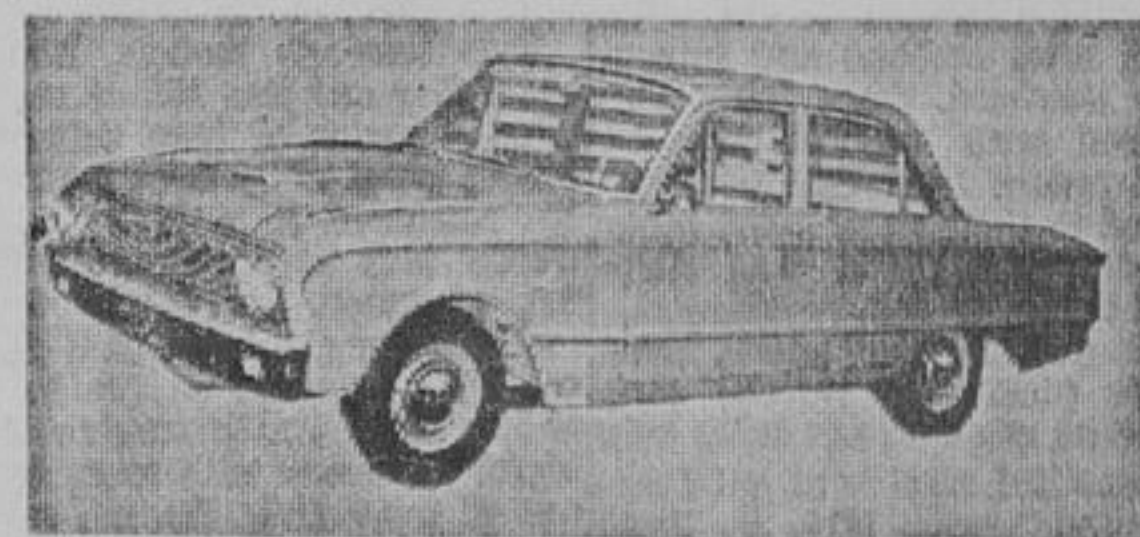
COME IN! COMPARE! CONVINCING YOURSELF!  
Bigger Used Car Variety & Value At Little's  
PLUS a BONUS ON EVERY USED CAR SOLD THIS WEEK  
Free Snow Tires, New '64 Plates, New Battery



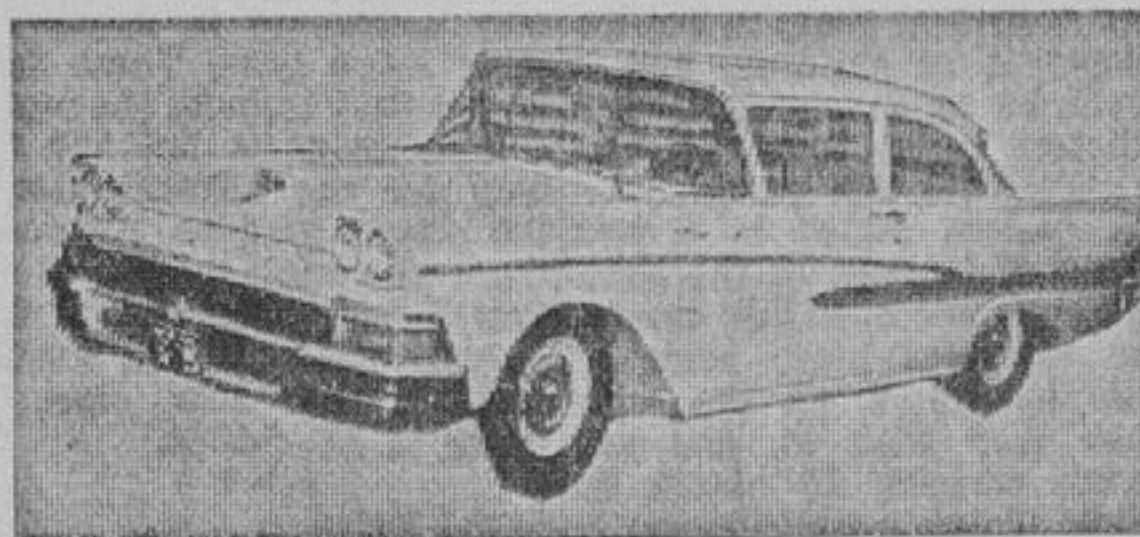
'62 FAIRLANE 500 2-DOOR  
Move up to Ford's welterweight class and get tops in economy plus the best in performance with this red and white beauty. A Little's original, priced to sell fast. \$1995



'62 FORD GALAXIE COUNTRY SEDAN  
Bring the family and test drive this snow white beauty tonight; has 6-cylinder economy and priced to sell quick. \$1785



'62 FALCON 4-DOOR  
With radio. Go Falcon and save with this Fieldstone Tan best seller from Ford. 12,000 guaranteed miles. Sold originally from Little's. \$1895



'58 FORD 2-DOOR  
6-cylinder. For cheap transportation you can't beat this green 2-door, 6-cylinder model. Priced at only \$845



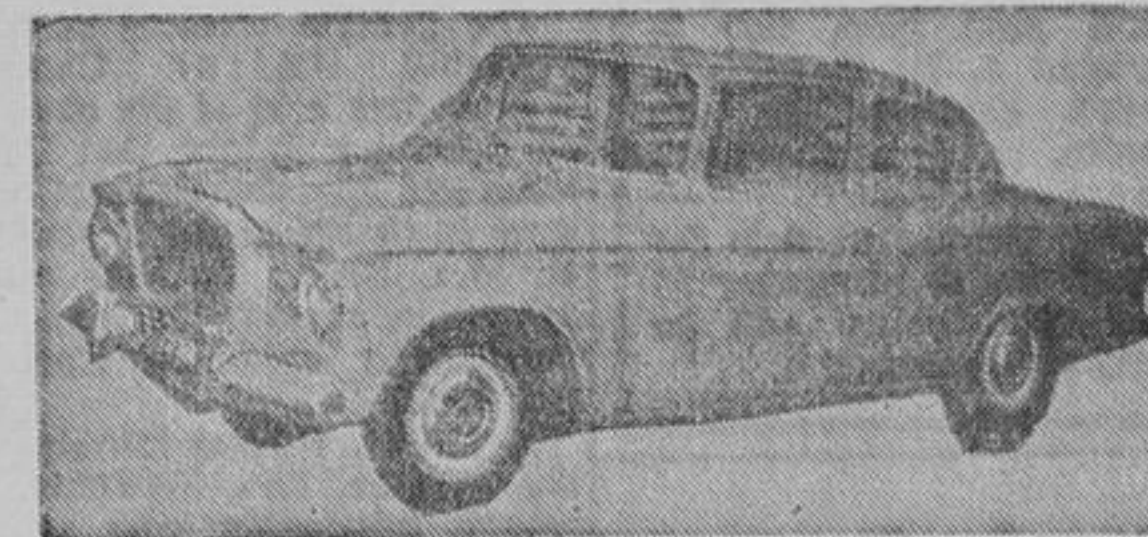
'61 FORD GALAXIE 2-DOOR HARDTOP  
Automatic transmission, with radio. Here's your chance to buy one of today's most popular cars at a greatly depreciated price. Gleaming bronze with matching beige interior. \$1895



'58 CHEVROLET BISCAINE 2-DOOR  
One of the cleanest units in our stock and offering thousands of miles of carefree motoring with its excellent mechanical condition. Metallic green in colour. \$1045



'59 CHEVROLET IMPALA 2-DOOR HARDTOP  
V-8 automatic, with radio. Sharp one-owner car; you must see this one to appreciate it. Only \$1795



'60 STUDEBAKER LARK  
A smart, compact family car featuring 6-cylinder economy, finished in smart blue. Down to earth price only \$744



'59 GALAXIE 2-DOOR HARDTOP  
A real eye-catcher, featuring 6-cylinder economy, automatic transmission, custom radio; finished in white Corinthian with red interior. \$1395



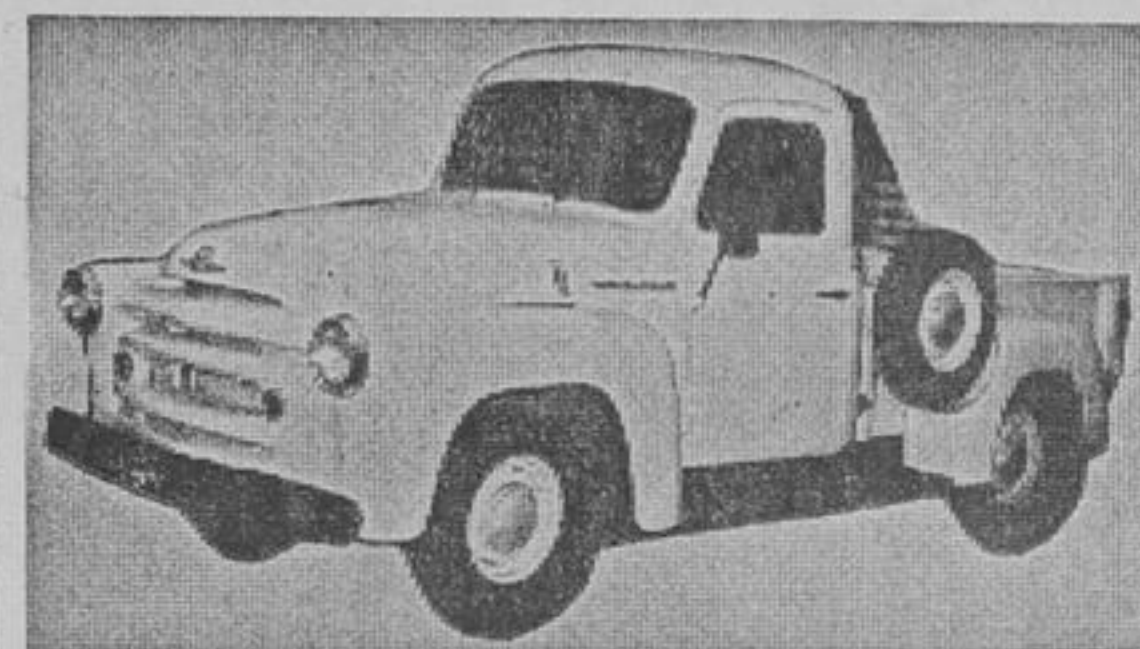
'61 METEOR MONTCALM CONVERTIBLE  
This beauty is finished in Rangoon Red with complementary black top. Features automatic transmission, V-8, with radio, windshield washer and whitewalls. Only \$1945



'58 MERCURY COLONY PARK  
9-passenger wagon, featuring 8 cylinders, A-7, radio. This imported beauty is finished in sharp blue and white, with matching blue interior. \$1345



'60 VAUXHALL SEDAN  
From General Motors of England we present the white beauty at a fraction of the original cost. Another exceptional buy. Only \$895



'56 INTERNATIONAL 1/2-TON PICK-UP  
Ideal for farm or city delivery. Buy this popular-priced pick-up. Priced at only \$695



'60 VAUXHALL RANCH WAGON  
Be a proud owner of the best-built General Motors product ever. A practical maroon with matching red leather interior. Only \$995



'62 CORVAIR 700 4-DOOR SEDAN  
With automatic transmission and radio. A one-owner car in perfect condition. This smart compact is one you must see and drive. Priced at \$1995

**TV TROUBLE?**  
CALL BA. 1-0485  
AN R.E.T.A. MEMBER  
BAKER ELECTRONIC SERVICE

**GOT A CHILLY ROOM?  
ADDING A ROOM?  
MAKE YOUR COMFORT COMPLETE WITH ELECTRIC HEAT**

VISIT YOUR ELECTRIC HEATING INFORMATION CENTRE  
**ONTARIO HYDRO**  
Richmond Hill — Phone Avenue 5-4968



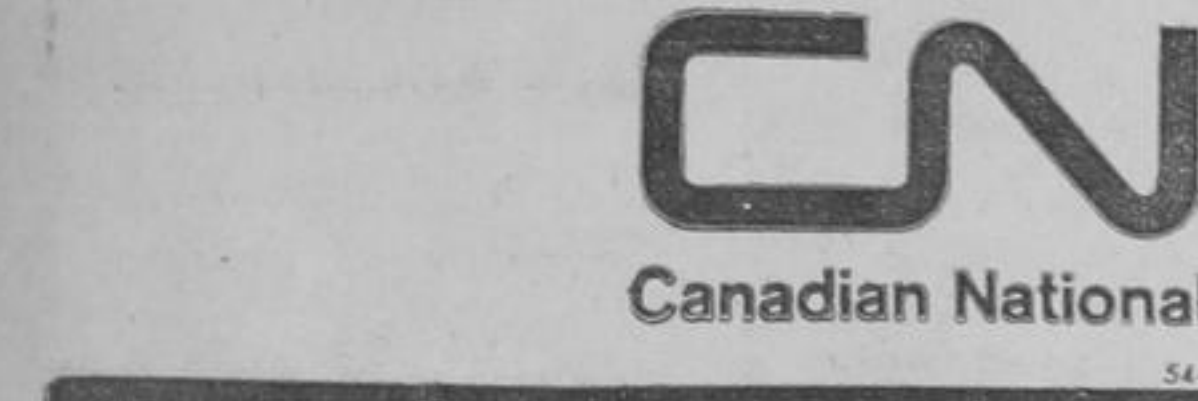
**RED WHITE BLUE FARE PLAN**

RICHMOND HILL to TORONTO  
\$1.00 RED \$1.00 WHITE \$1.00 BLUE  
RICHMOND HILL to VANCOUVER  
\$41.50 RED \$45.50 BLUE \$49.50 BLUE  
(Parlor Car and Sleeping Car Space Extra)

These new fares, plus frequent trains, convenient schedules and the relaxed comfort of modern rail travel, are the reasons you should plan your travel on CN's Red, White and Blue Fare days.

Passengers holding parlor car or sleeping car accommodation receive complimentary meals on trains carrying meal service cars. Pick up your copy of the Calendar of Days, from CN.

Coach seats on Super Continental reserved in advance at no extra charge.  
For further information contact your local CN agent.



AS LOW AS \$20.00 MONTHLY depending on the model you buy and on the model you trade; on Little's 36-month low rate plan.

NO CASH NEEDED — YOUR PRESENT CAR NEED NOT BE PAID TO MAKE A DEAL

**LITTLE FORD**

R. D. Little & Son Limited • Yonge Street, Richmond Hill • 285-1105

**LITTLE EXCLUSIVE VALUE PLEDGE**  
Take the Quality Used Car of your choice to the mechanic of your choice BEFORE you buy! Little's will pay his inspection fee, without obligation. THE DOUBT IS OUT — when you buy here! Every Little Quality Used Car is fully guaranteed.