

**COMING EVENTS**

**FEBRUARY 9** — Friday. Opening Dance at Melody Lane Dance Pavilion (rear of Log Cabin Grill, Oak Ridges) Rock-a-Billy Band. Prizes. Admission 75c. clw32

**FEBRUARY 10** — Saturday 2-4 p.m. St. Gabriel's Valentine Tea Bayview & Crosby Ave., Ladies, Mothers & Daughters, Bake Table - Hat Bar - Local Entertainment. Children 15c, adults 35c. clw32

**FEBRUARY 12** — At 8.15 p.m. Beverley Acres School Y Neighbourhood Group meets. (Copper-Tooling). Everyone welcome. clw32

**FEBRUARY 14** — Wednesday, 1 p.m. Richmond Hill United Church Women's VALENTINE LUNCHEON in the church hall. Speaker, Miss Dorothy Young. Tickets \$1.00. clw31

**FEBRUARY 14** — Wednesday, 5 p.m. North Liberal Women's Association Tea at the home of Mrs. Clarence Davis, 88 Spruce Street, Aurora, 2.30 - 5 p.m. clw30

**FEBRUARY 16** — Friday at 8.30 p.m. Victoria Square District Lions Club Old Time and Modern Dance, in the Victoria Square Community Hall, with Norm Burling and his orchestra. Proceeds for community purposes. clw32

**FEBRUARY 16** — Friday, 8 p.m. The official opening of Kleinburg School Addition by the Public School Board of the Township School Area of Vaughan. clw32

**SUNDAY EVENING**, 7.30 to 9.30 Richmond Hill Library Auditorium. New members welcome, phone TU. 4-1435. \*1w32

**EVERY MONDAY** — 8.15 p.m. York Chorale practice in basement St. Mary's Anglican Church. Vacancies in all sections, particularly men. Come and join us. Phone AV. 5-2237. clw32

**CONTEST** — Win a self-improvement course. Make-up, Poise and Posture. Exercises. Groups interested have classes in your own clubroom. Call Audrie 285-4889. Contest ends February 3. clw28

**Vaughan Township Among First On Continent**

**New Concept Of Road Management Studied**

By F. J. PICKING

Within a short time a plan revealing a new concept in the development and maintenance of township roads will be studied in detail by Vaughan Township Council. It's a brand-new plan—"so new that up to the present it is being treated as a "pilot" project by two Ontario townships only—Vaughan and North Dorchester in Middlesex County.

**Vaughan Will Examine Sidewalk Possibility**

Acting on a suggestion of a member of the township school area board, Vaughan Township council has decided to look into the possibility of having sidewalks constructed along heavily travelled highways to provide safe means for children to get to and from school. The sidewalks, if constructed, would probably be put along such highways as 7 11 and Keele Street or any area where complaints had been received about children having to walk on the highway.

Council decided to obtain information from the Department of Highways relative to sidewalk construction, particularly with respect to the department's policy in subsidizing such projects.

It's a new approach to road planning for the continent. Originated by the National Association of County Engineers in the United States, it has been adapted and refined for use in Canada by the Ontario Department of Highways. Vaughan and North Dorchester, if they adopt the new concept officially—and it is almost certain they will—will be among leaders on the North American continent in the new and practical approach to road management.

The plan calls for no elaborate engineering formulae. Indeed, if a formula had to be developed, it might almost read—"A ten-year plan, plus materials, plus balanced financing, plus commonsense, divided by needs."

It is based on a complete study of the existing road system and a traffic analysis, together with an expert evaluation of the condition of the roads as they now are. Traffic counts and related studies reveal what each road in the municipality is carrying at the present time, together with what it is likely to have to carry in the future. The study is projected on a ten-year basis.

Study of the roads reveal their condition, their bases, their drainage, their general fitness for the type of job they

up to date. Engineers look ahead ten years, figuring that their forecasts will be valid for at least six, but admitting that the major flow of population which the decade is witnessing will exceed the best of forecasts. Vaughan's 17,000 population at the present time, it is estimated, will rise to 55,000 in 1980, indicating the type of problem that forecasters face.

**Great Aid to Council**

The plan will have many advantages from a township council point of view. Its members will be working with facts instead of guesses and will be able to make informed decisions. It will prevent hit-and-miss work on the township's road system by allowing work to be done on the basis of well-defined needs.

**Establish Factors**

Critical factors in the establishment of road ratings, or priorities, would be speed, width, surface. Roads which were evaluated as efficient for present needs would form the township's backlog, to be taken care of first. Roads with a lower priority would, obviously, take their place lower in the scale. Bridges and railway crossings would form important segments of the studies. Type of use, the nature of the service required, being a consideration.

The estimated cost of remedying the deficiencies would be established, over a ten-year period. Road expenditures would then be made according to the plan or, in other words, according to needs.

While the plan is designed to cover ten years, it would be reviewed constantly to keep it

responsibility, naturally. Roads in new sub-divisions would be provided in the first instance by the sub-divider and, until taken over by the township, would not become a municipal charge. The built-in surveys provided by the plan would enable the necessary modifications to be made when necessary.

Most important of all, stressed all those present as the plan was unfolded, was the vital fact that problems and their magnitude could be spotted as they were developing, tending off difficulties which had arisen in the past when councils and road committees confronted bogies which, figuratively, sprang on them out of the blue.

**New Roads Involved**

No new roads—that is, roads coming into existence where no roads were before—are involved in the planning. The township's road grid already exists and has done for many years. The building up of the present roads is the backbone of the plan. Provincial or county roads which might happen to come into the township would not be its reciprocal road management.

**It will eliminate the doing of work in unnecessary places through pressure (such things do happen) while other parts of the municipality, where needs are actually greater, go short.**

Better planning will be possible, even down to the purchasing of road machinery. Problems and their magnitude can be identified and modifications made if and when needed.

Development of the township, fitting in with the official plan, will be simplified at least insofar as roads are concerned.

In short, the plan is an attempt to take the guesswork out of road maintenance without taking away the right of independent decision.

The plan has been arrived at after months of study by the provincial Department of Highways and township officials C. R. Wilmot, planning and research engineer of the Municipal Roads Branch of the Ontario Department of Highways, explained the new concept to "The Liberal" recently. Sitting in with him on the discussion were Township Clerk J. M. McDonald, Keith Hopper of Dun-Donald Hopper and Associates Ltd., the township's consulting engineers; Robert Saunders, accountant of the township's road de-

**THE USED CAR SEASON**

Every motorist who has had to have his car thawed out after a winter storm, ice and snow washed off and the car dried before taking it into the cold again, knows what an expensive and tiresome job it can be.

Now do the same thing for anywhere from 10 to 50 cars or more—one at a time—and you have an idea of just one of the special problems car dealers face in winter.



It normally costs \$3.00 per day to a dealer to keep a used car on his lot, counting lot upkeep, depreciation, washing, license fees, etc. In winter, battery recharges, anti-freeze, more frequent washing and starting problems add another \$2.20 per day, making a total of \$5.20.

Depreciation isn't too important in winter because it levels off in late November and doesn't drop significantly until spring. This is essentially a customer benefit since depreciation loss is the biggest single item of owner expense.

A used car bought now will lose little, if any value, in the next three months.

During all seasons, Dodge Ontario sells quality used cars at what we believe to be the lowest possible net price anywhere. But we would frankly prefer to pare those prices and keep our inventory down in preference to spending money on snow removal and battery recharges.

This is the season to buy a good used car. If you buy it from us you can be sure it has been reliably reconditioned to give you the satisfaction it is your right to expect.

Remember the Woman's Valentine Luncheon at Richmond Hill United Church, Wednesday, February 14, at 1 p.m.

Press Bear, THE DODGE ONTARIO CAR CO. LTD. 5959 Yonge St. at Cummer Willowdale

**NOTICE**

**Now You Can Wash**

All Those Blankets, Bed Spreads, Drapes, Scatter Rugs, Sheets, Playsuits, Overalls, etc. In our Big New Double Load Washers

They hold 2 regular washer loads for 35c. We also have big Commercial Dryers that fluff dry your clothes ever-so-fast. You can put 4 to 5 regular washer loads in one big dryer (deposit 10c for each 10 minutes required). Several dimes may be deposited at a time.

We now can offer you your choice of the regular automatic washer of either the Big Inghs Washer or the Easy with the Spirator Action. They both do a very clean wash.

(Come and See for Yourself)

**COIN LAUNDRY**

BAYVIEW PLAZA BAYVIEW AVENUE & ELGIN MILLS ROAD

**First IN DRY CLEANING**

APPROVED

**SANITONE**

SERVICE

**Barth's CLEANERS & SHIRT SERVICE LIMITED**

198 YONGE ST. N. RICHMOND HILL TU 4-4411

**WHY SHOULD YOU BUY A USED CAR FROM WILSON-NIBLETT MOTORS LTD.**

We Are Authorized G.M. Dealers

Our modern facilities equipped to handle any problem are not obtainable from an unauthorized motor car dealer.

O.K. used car warranty recommended by G.M. and backed by our policy of customer satisfaction. Low Cost G.M.A.C. Financing and M.I.C. Insurance.

- 61 Chev. 4 Door Belair, V8, automatic transmission, power steering, radio, whitewalls, windshield washers
- 61 Chev. 2 Door Impala Hardtop, 6 cylinder, automatic transmission, power steering, power brakes, radio, whitewalls
- 61 Chev. 4 Door Impala Hardtop, V8, automatic transmission, power steering, power brakes, power windows, radio, whitewalls
- 61 Pontiac 4 Door Strato, 6 cylinder, automatic transmission, two-tone
- 61 Austin Healey Sports, wire wheels, Hardtop, two-tone
- 61 Corvair Custom 500, automatic transmission, radio, folding rear seat
- 61 Chev. 4 Door Belair Hardtop, 6 cylinder, automatic transmission, radio, whitewalls, wheel discs, windshield washers
- 60 Chev. 4 Door Biscayne V8, automatic transmission, radio, whitewalls
- 60 Corvair 4 Door Custom 500, standard transmission
- 60 Chev. 4 Door Belair, 6 cylinder, standard transmission, whitewalls, wheel discs, windshield washers
- 59 Chev. 4 Door Belair, 6 cylinder, automatic transmission, turbo-glide, windshield washers
- 59 Olds. 2 Door Super 88 Hardtop, automatic transmission, power steering, power brakes, two-tone, whitewalls, radio
- 58 Chev. 2 Door Yeoman V8, Automatic transmission, radio, two-tone
- 58 Pontiac 2 Door Laurentian V8, automatic transmission, two-tone
- 57 Dodge 4 Door Regent, 6 cylinder, automatic transmission, two-tone
- 57 Buick 4 Door Special Hardtop, power top, power steering, power brakes, radio, whitewalls, two-tone
- 55 Ford 2 Door Fairlane V8, automatic transmission, radio
- 55 Ford 4 Door Fairlane V8, automatic transmission, radio, whitewalls, two-tone
- 55 Pontiac 4 Door Laurentian V8, standard transmission, two-tone
- 54 Pontiac 4 Door

**WILSON-NIBLETT MOTORS LTD.**

CHEVROLET, OLDSMOBILE, F.85, CORVAIR, ENVOY, O.K. USED CARS

355 Yonge St. N. AV. 5-4991 - TU. 4-1194 Just North of Richmond Heights Centre

**GUIDE AND BROWNIE NOTES**

**1st Richmond Hill Girl Guides Reported by Guide Margaret Hanson**

The fifth meeting in 1962 of the 1st Richmond Hill Guide Company was held on Monday evening, in the form of a skating party under the leadership of Captain Munsey, Lieutenant Willis and Patrol Leaders Dorothy Wood, Judy Todd, Judy Pyatt, Margaret Pim and June Bunker.

Despite the strong cold wind, the Guides enjoyed the skating and being pushed by the wind. Mr. Newman kindly permitted the group to make use of the kitchen to make warm refreshments and Mr. Garland, school janitor, whose assistance was appreciated. The Guides all enjoyed the informal outing and the meeting was brought to a close at 9.00 p.m.

**Girl Guide "Camp Adelaide"**

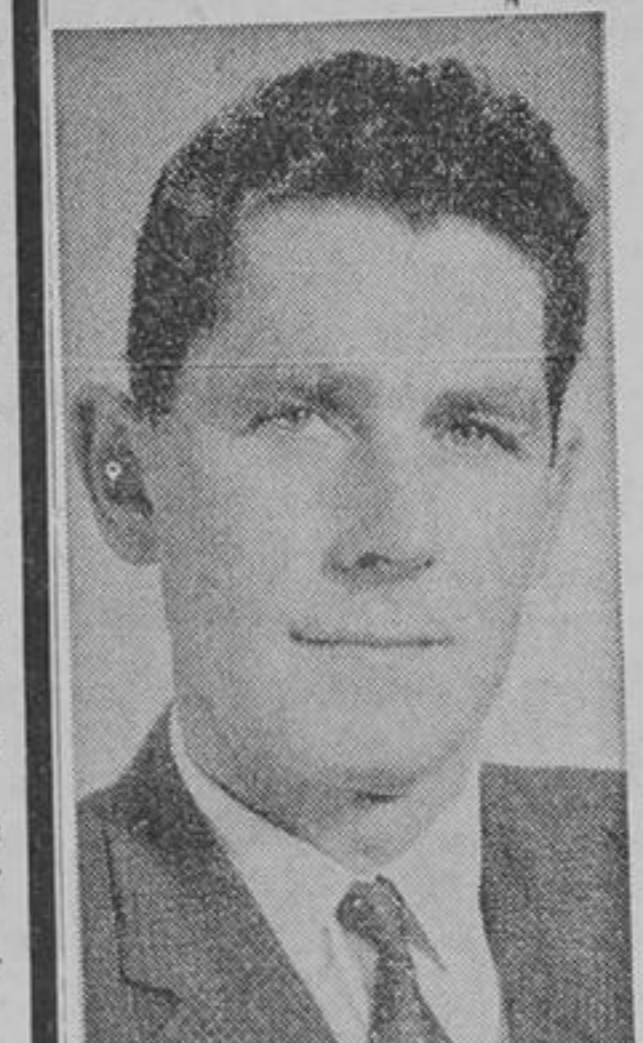
The generous gift of \$10,000 by Mr. R. S. McLaughlin of Oshawa, towards the development of the Girl Guide "Camp Adelaide" at Haliburton is wonderful news for all Guides in Richmond Hill, Thornhill and surrounding districts comprising the York Central Division of which Mrs. P. D. McTaggart-Cowan is Division Commissioner.

The purchase of the site of Camp Adelaide was made possible by the inspiration of the late Mrs. McLaughlin, and later

gifts of money were given by Mrs. McLaughlin's daughters in honour of their mother. The camp was formally opened on July 9th, 1960, located on a beautiful spot, just east of Haliburton Village, on Black Lake, the lake frontage encircling half the lake, plus two points of land jutting out from the adjoining shore, which lends itself admirably for overnight camping.

The camp is 280 acres in extent, easily reached by highway and close to doctors and Red Cross Hospital, with a small lake, ideal for boating and canoeing. One project for the future has been consideration of a chapel, on a hillside where hundreds of silver birch trees abound. The girls could hold their "Guides Own" in this beautiful setting looking right through to the lake.

**Gormley Farmer Owns Champion**



**DON MATTHEWS**

Owner of "Don Head Duchess Connie", which has broken the all-time Jersey record for production. Mr. Matthews has farmed on the Don Mills Road, just north of Victoria Square, for the last fifteen years. His cow's production was 16,898 pounds of milk and 768 pounds of fat in 305 days. Connie's twin sister broke four records as a two-year-old.

Hon. George Hees, Minister of Trade and Commerce for Canada, was a recent visitor to the Matthews farm, with many other visitors, who later attended the annual Barn Meeting of the York County Jersey Club at the farm. Breeders, their families and 4-H club members were among the guests. (Lagerquist)

**Reported by Guide Elizabeth Burgess**

On Wednesday, January 17th, the 7th Richmond Hill Guide Company, and the 5th and 9th Brownie Packs held a Fly-Up Ceremony at Beverley Acres Public School.

The meeting was opened conjointly by the Brownies and Guides. The traditions then formed the traditional horseshoe. The Guides looked on. Colour Bearers for this ceremony were Sylvia Inglis and Gloria Smart.

The following badges were presented by Mrs. Pat Gregg, Brown Owl of the 9th Pack and Mrs. Barbara Firman, Brown Owl of the 5th Pack; Needleworker to Margaret Inglis, a Golden Hand to Joanne Crocker, and a Golden Ladder to Pamela Stirling.

The Fly-Up Ceremony then commenced. After receiving their wings from their Brown Owls, the following Brownies "flew" up the golden path to Guideland, Leslie Fournier, Sandra Smith, Joanne Crocker of the 9th Pack, and Jane Dean of the 5th Pack. They were received by their new Patrol Leaders and Captain Inglis, Susan Owens and Pamela Stirling of the 5th Pack, "walked-up" and were received in the same manner. Although gaining all necessary badges, Pamela Stirling was unable to "fly-up" because she had not been a Brownie for the required two years.

The next part in the proceedings, was the enrollment of recruits from the 7th Guide Company, Arlene Haggart, and Katherine Smith, of the Bluebird Patrol and Lynn Aitken of the Scarlet Tanager Patrol were welcomed into the "World Wide Sisterhood of Guides" by Captain Jean Inglis.

Elizabeth Burgess received a Little House Emblem. A quality for this emblem, a Guide must pass the six homecraft badges; Cook, Child Nurse, Needlewoman, Laundress, Housemaker, and Hostess. The house on this emblem, is a replica of the cottage presented to the Queen and Princess Margaret when they were children. The Queen gave her consent and approval for the awarding of this badge.

At the conclusion of the ceremony, games were enjoyed by all present. The meeting was closed with Brownie Taps.

**MORLEY'S FOODLAND**

**VARIETY SHOW**

of food Savings

29 YONGE ST. S. Richmond Hill

**CHICKEN Legs & Breasts**

lb. **49c**

**COTTAGE ROLLS**

Sweet Pickled 1/2 Cryovac lb. **49c**

**PORK LIVER**

FRESH SLICED lb. **29c**

**Nestle's Quick 2 lb. tin 85c**

**STOKLEY'S FANCY**

**Tomato Juice 20 oz. tin 12c**

**LYON'S ECONOMY**

**Tea Bags pkg. of 100 69c**

**PET**

**Instant Milk 3 lb. pkg. 93c**

**STOKLEY'S FANCY HONEY POD**

**PEAS 2 15 oz. tins 35c**

**REGULAR OR CHUBBY**

**Kleenex 2 pkgs. 29c**

**Betty Crocker CAKE MIXES** White or Chocolate pkg. **33c**

**Fancy Grade McIntosh or Spys**

**APPLES**

6 qt. bskt. **59c**

**CELERY**

2 Large Stalks **29c**

**Snow White CAULIFLOWER HEAD 29c**

**Richmond Hill Lions Hall MONDAY, FEB. 12th**

**BINGO \$50.00 FULL CARD TO GO**

**\$350 JACKPOT 52 STARTING TIME - 8 P.M. NUMBERS CALLED**