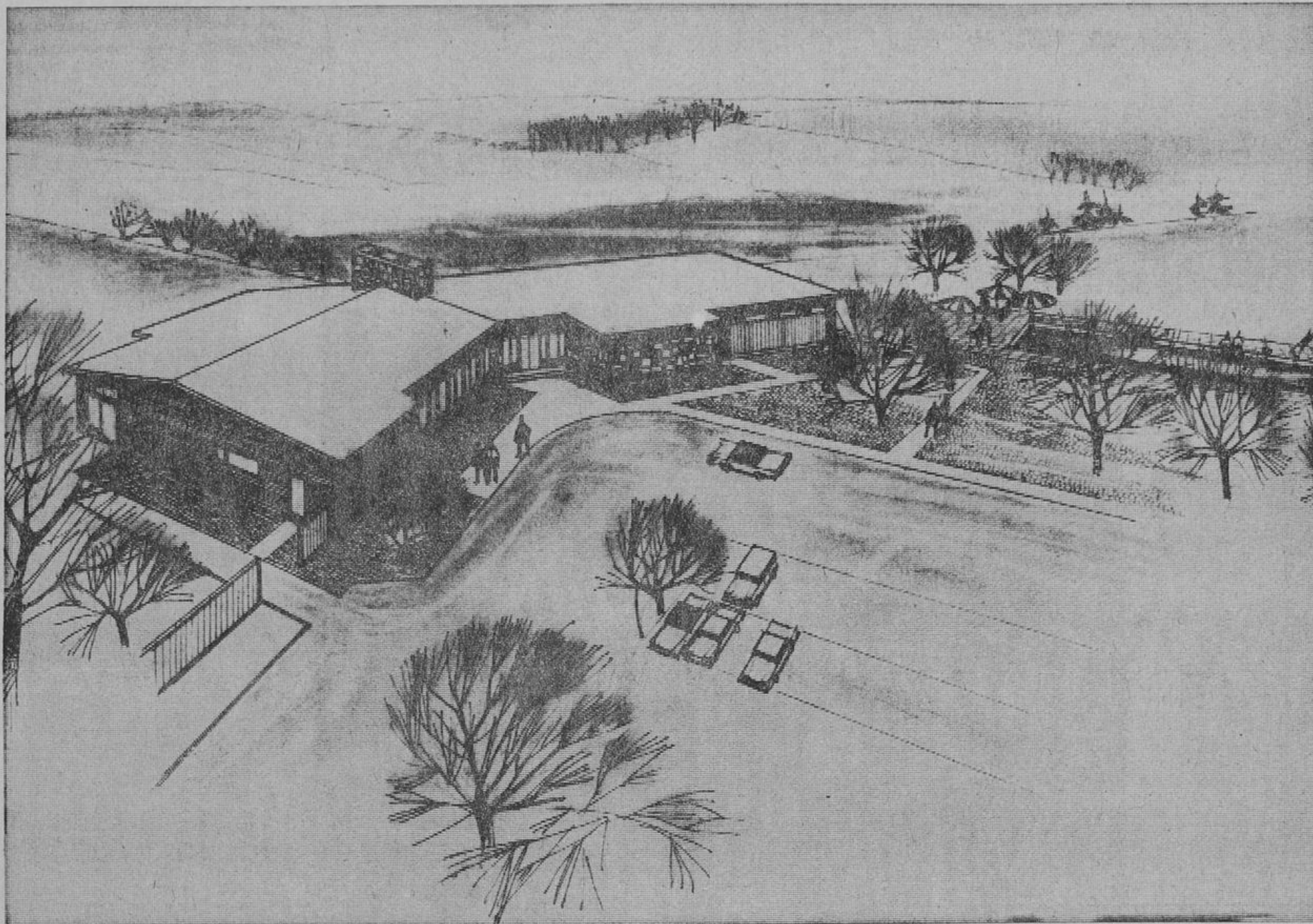


# Introducing One Of Canada's Outstanding Golf Courses

## THE NEW RICHMOND HILL GOLF & COUNTRY CLUB LIMITED

Bathurst Street, 3/4 Mile North of Maple Side Road

**Open  
For  
Play  
JUNE  
1962**



**Open  
For  
Play  
JUNE  
1962**

### We Are Pleased To Announce....

The new Richmond Hill Golf and Country Club will be open for play in June 1962. Applications are now being received.

We sincerely believe that this will be one of Canada's outstanding golf courses. Designed by C. E. Robinson, Canada's leading golf course architect; a course which will appeal to the average golfer and challenge the expert, easy to walk and yet the gently rolling terrain will present every type of golf shot. The fairways have all been seeded with the latest and best mixtures of seed. The fairway bunkers and traps around the greens are expertly placed and designed. The large tees are designed so that markers may be easily moved to ensure a complete variety of tee shots and minimum of wear. The extra large greens (up to 9,000 sq. ft.) are gently undulating and allow for a great variety of pin placements, thus assuring you an intriguing and challenging change each time you play. The greens have been sodded with the last word in bent grass, the famous "Pencross" strain being used by the finest courses on the continent. These greens will putt as true as though they were radar controlled. Our sixteenth hole is patterned after the famous 16th at the Masters Course in Augusta, Georgia, this will undoubtedly become known as one of Canada's outstanding Par 3 Holes, and will test your skill and ingenuity.

Our Club House, now under construction, will be completed by early spring and will lack nothing for your comfort or convenience. The location is in the centre of the course overlooking the ninth and eighteenth greens, first and tenth tees, the putting green and driving range. The locker rooms will be comfortably broadloomed. The lockers will be the newest in design with shoe racks and sufficient depth to hang up your suits. We are providing individual tiled showers as well as a steam bath to soothe aching muscles and ruffled nerves. Complete lounge, dining and snack facilities with an adjoining patio will be provided. Curling and swimming are planned for the future. The professional shop will feature the latest and best in golf equipment and apparel.

Nothing has been overlooked to make Richmond Hill Golf and Country Club one that you will want to join. Come, look over the course, we are sure you will be pleased, or visit our "Winter Golf Shop" in "The Mall", Richmond Heights Centre, for further information. We will have the latest in "Pro Line" golf equipment and golf and curling apparel on sale at special introductory prices.

Directors  
JOHN A. GRIFFIN  
ALBERT JACOBS  
BERT GRANT JR.

RICHMOND HILL GOLF AND COUNTRY CLUB LTD.



#### Annual Dues

Senior Gentleman	- - -	\$175.00
Senior Lady	- - -	100.00
Husband and Wife	- - -	250.00
Junior — 13-17	- - -	50.00
Intermediate — 18-22	- - -	100.00

Junior and Intermediate Members must have a parent who is a Senior Member of the club.

#### Initiation Fee

Senior Men	- - -	\$400.00
Senior Ladies	- - -	300.00
Husband and Wife	- - -	600.00

Entrance fee to be paid one half with application and balance by June 1st. Senior Members will pay only the entrance fee the first year. No yearly dues will be charged for 1962 if you join before July 1st, 1962.

Senior Members may bring guests at \$3.00 Weekdays and \$5.00 Saturdays, Sundays and Holidays.

#### Special Associate Membership

DUES — \$50.00 per year

Green Fees to be paid each time you play  
\$4.00 Weekdays — \$6.00 Saturdays, Sundays and Holidays  
Associate Members may bring guests at the above Green Fees.  
Associate Members may apply the \$50.00 dues to their initiation fees if they wish to change categories.

PLEASE SEND APPLICATION FORM TO:

Name .....

Address .....

Phone .....

**Winter Membership Office and Pro Shop Are Now Open In The Mall**  
**Richmond Heights Centre, 250 Yonge St. N. Richmond Hill Telephone AV. 5-5460**  
**GOLF EQUIPMENT & GOLF and CURLING APPAREL ARE ON SALE AT SPECIAL INTRODUCTORY PRICES**