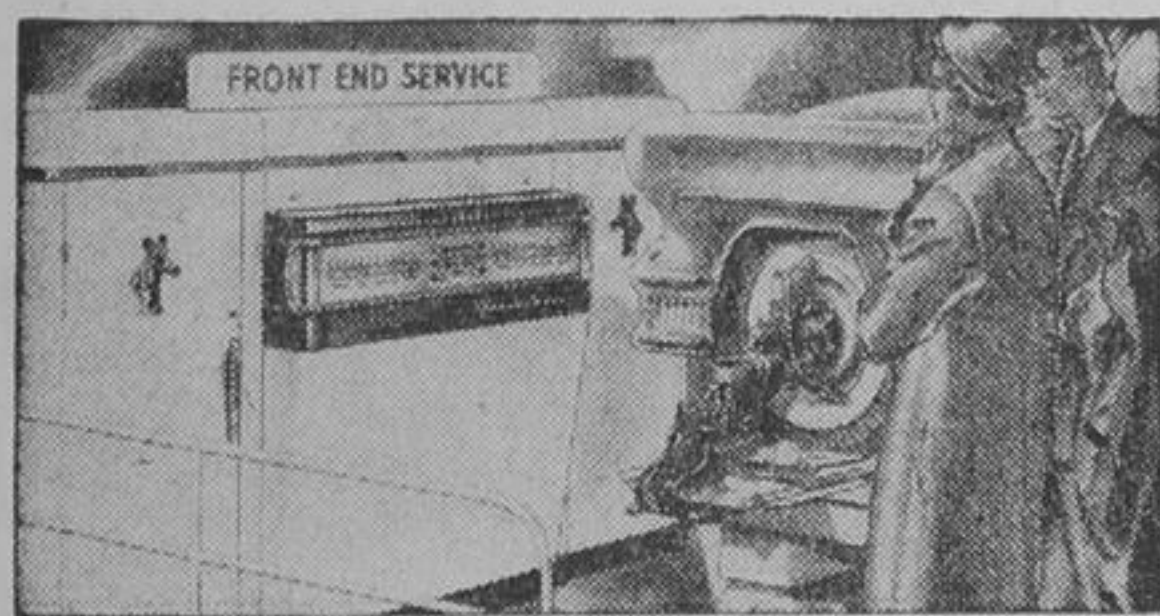




Protect Your Snow Tires On
Twice-A-Year Changeover.
Buy **BRAND NEW**
WHEELS
CHEV. 1957-62 \$7.95
FORD 1957-62 \$8.95



Put Comfort In Your
Riding & Confidence
Into Your Driving.....

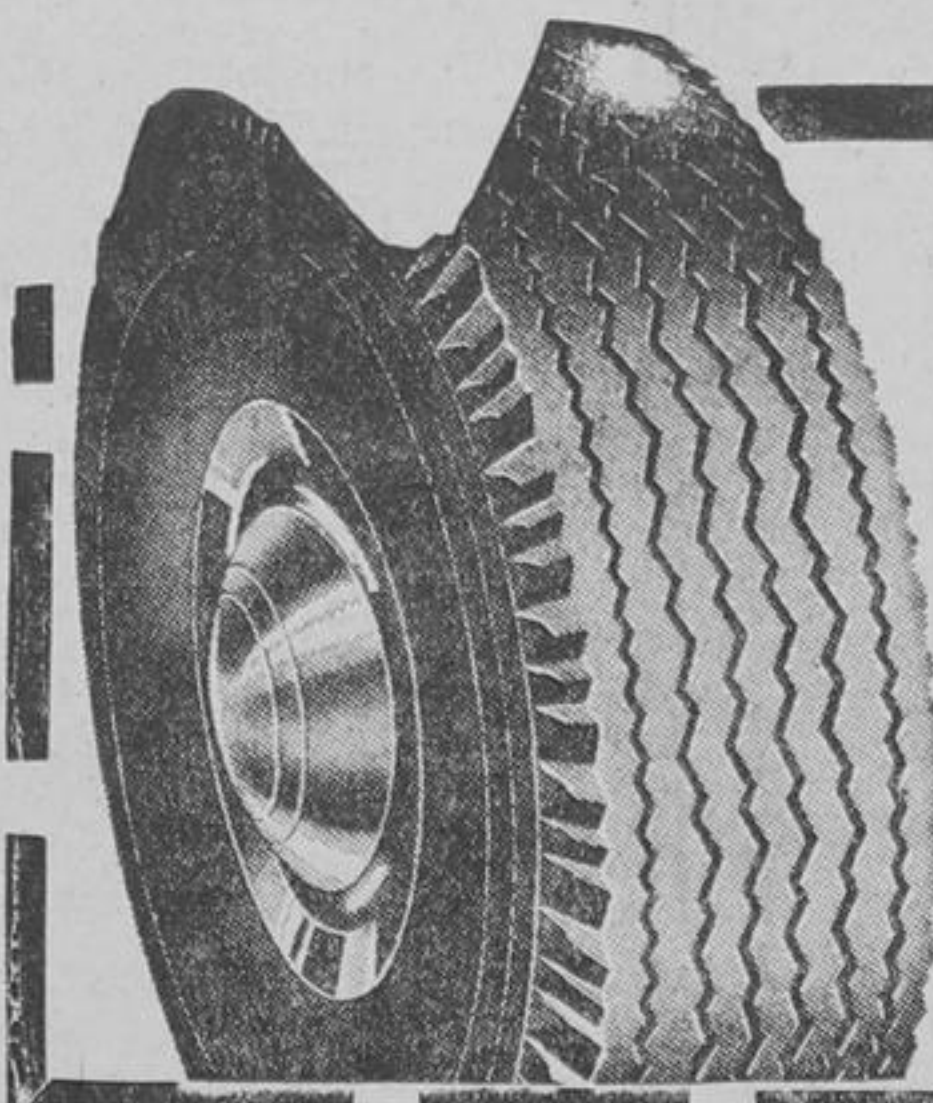


with the famous
"BEAR"
WHEEL
ALIGNMENT
SAFETY SERVICE

Here's what you get
Correct Caster, Correct Camber,
Correct Toe-in and Toe-out
FRONT WHEELS BALANCED
INCLUDING WEIGHTS
COMPLETE STEERING INSPECTION

9.50

"BEAR" The Banner Of Safety When You Drive



NO TRADE NEEDED

to get this **BRAND NEW**

TIRE FOR ONLY

THESE POPULAR SIZES

600/16; 670/15; 750/14

9.95

NO TRADE NEEDED

—but we will buy Trade-In Tires AND PAY YOU CASH up to \$3.00—for unused miles

Recognized by Winter-Wise Motorists as the "GOING-ist" Tire Anywhere
CANADA'S NO. 1 SNOW TIRE
SUPER-LASTIC HIWAY-BYWAY
built with "SARCA" NATURAL RUBBER
and "NYTEX" (The engineering achievement combining TYREX and NYLON)

(*Super Abrasion-Resistant Carbon Alloys)

STORE and SERVICE DEPARTMENT
Open Thursday and Friday
Nights To 9 p.m.

FREE — ROAD HAZARD INSURANCE

NO TIME LIMIT
NO MILEAGE LIMIT
NO RED TAPE

NO TRADE NEEDED

Ride safely, securely, silently on HIWAY-BYWAY — rated top choice for bad-weather driving — 12 months in the year. Now — no matter when or where you drive, you can depend on the HIWAY-BYWAY to get you going, keep you going and get you back safely. Power-grip "SARCA" Natural Tree Rubber Tread gives greater GO, more positive STOP. Only HIWAY-BYWAY gives you premium safety — at less than premium prices... Actually less than you'd expect to pay for standard "new-car" quality tires.

Size	Mfr's Reg. List Price	Your Cost (No Trade Needed)	"Trade-In Tires"
5.50		15.95	We will buy your trade-in tire and PAY YOU CASH! Up to \$3.00 for unused miles.
5.90/15	21.50	15.95	
5.60	21.30	13.95	
6.00/16	21.85	17.95	
6.40	22.45	14.95	
6.50/13	26.75	20.95	
6.70/15	23.70	18.95	
7.10/15	27.20	20.95	
7.50/14	23.70	18.95	
7.60/15	29.60	23.95	
8.00	32.00	25.95	
8.20/15	27.20	20.95	
8.00/14	29.60	23.95	
8.50/14	29.60	23.95	
9.00/14*	35.45	27.95	

Similar savings on Tubeless and Whitewalls
Add 50c for installation
*TUBELESS TYPE ONLY



Moto-Master FRONT END PARTS Save up to 40%!

MAKE and YEAR	BALL JOINTS		TIE ROD ENDS	COIL SPRINGS
	Upper	Lower		
CHEVROLET and PONTIAC 1955-57	5.98	5.90	3.60 pr.	9.80 pr.
1958-60	5.98	6.95	3.80 pr.	9.80 pr.
FORD and METEOR 1955-56	11.20	12.25	3.20 pr.	11.40 pr.
1957-59	10.25	10.25	3.20 pr.	11.90 pr.
OLDSMOBILE 1957-58	5.35	8.60	5.10 pr.	16.80 pr.
1959	5.98	8.60	5.10 pr.	16.80 pr.

TORSION BARS Dodge and Plymouth 1957-58, Each **7.60** Chrysler Windsor, DeSoto Firestone, 1957-58, Each **7.60**

DEDUCT EXTRA 5% DISCOUNT
From All Prices Shown

5% CASH DISCOUNT NOTES ON ALL PURCHASES OF 59c OR MORE (labor excluded)



EasyCreditTerms
Open A C.T.C. INTERNATIONAL CHARGE
Nothing To Pay For 55 DAYS

WINTERIZE YOUR CAR — at CANADIAN TIRE SAVINGS

Restore Power & Peak Performance with our
7 Point Fall Tune-up

INCLUDING LABOUR

Here's what you get:

- ★ Compression test to see if compression is uniform and in line with manufacturer's specifications
- ★ Supply and install H. D. points, condenser, rotor and CTC "Turbo-Fire" Spark Plugs
- ★ Check Charging Circuit and Clean Battery Terminals
- ★ Check Coil Voltage
- ★ Service Air Cleaner
- ★ Adjust carburetor, check fuel pump pressure and operation of choke
- ★ Set ignition timing

4 Cyl. \$9.95

6 Cyl. \$11.95

8 Cyl. \$13.95

COOLING SYSTEM CONDITIONER
Works 3 ways to prevent and cure most common causes of cooling system failure. Works with any anti-freeze. 8-oz. **.89**

LIQUID RAD. SOLDER
Seals leaks permanently to make cooling system watertight. Big 10-oz. can. **.44**

MOTO-MASTER ENGINE WELD
Permanently seals cracks in aluminum alloys, cast iron and steel. Not affected by heat or cold or rad. preparations. 20-oz. **.69**

LIQUID RAD. FLUSH
Removes rust, scale from cooling system. Improves circulation and radiator efficiency. 10-oz. can **.49**

STEERING WHEEL COVER
Hard wearing plastic in a number of attractive colors. Easy on the eye and comfortable to grip. Each **.49**

PLASTIC SPRAY Chrome Guard
Tough plastic coating seals out weather, corrosion, moisture. Protects grille, bumper, etc. 16-oz. **1.44**

Bellows or Pellet Type THERMOSTATS
Orig. equipment quality. For top engine temperature control, efficient heater performance. 1.49

RADIATOR HOSE Resists anti-freeze, oil and corrosion. Moulded. As low as **.59**

HEATER HOSE Maximum strength to resist water, anti-freeze. Per ft., from **.17**

FAN BELT Original equipment quality. Prevents overheating, anti-freeze loss. From **.60**

BATTERY WARMER Fits in tray under battery to prolong battery life, reduce current drain. C.S.A. approved G-E element **5.95**

ANTI-FREEZE TESTER tests alcohol and Ethylene Glycol solutions. Accurately **.59**

FROST SHIELD SET WAS 39c
Prevents dangerous misting, frosting, steaming of interior glass areas. Consists of 5 pieces plus 2 shaped pieces for no-draft and cement. Easy to apply. **.29**

COLOR MATCH AROUND-TOWN PRICE \$1.25
Touch up traffic scars and scratches the easy push-button way. An exact color match for most late model cars. Choose from over 200 colors. 6-oz. Aerosol spray bomb **.89**

WATER PUMP LUBRICANT Stops squeaky pump bearings; protects against rust and corrosion. 20-oz. tin **.59**

E-QUICK START—A starting fluid for flash fast starts down to 65° below zero **1.29**

HEATER REPAIR PARTS Heavy Duty Heater Motor—6 or 12-volt **8.25**

Radiator Hose Connecting Elbows, from **.25**

Heater "Y", from **.57**

Heater Shut-Offs, from **.72**

Vacuum Control Shut-Off for most Ford products **2.25**

Heater Temp. Regulator Valve for most Ford products, from **2.25**

WINDSHIELD SEALER Stops leaks around windshields, windows. Adheres to glass, rubber, wood, metal, etc. **.49**

CHOKER CONVERTER Makes a troublesome automatic choke manual operated. Easy to install **1.95**

ELEC. MOTOR WARMER Plug into convenient outlet motor, cooling, lubricating system dry. With 5 1/2" cord, plug **3.99**

WATER PUMP EXCHANGE Tested to new-car standards. Guaranteed 90 days or 4,000 miles. From **4.70**

Top Engine Performance, Protection In All Weather
SUPEROYL 10-30
Refined From 100% Pure Pennsylvania — The World's Finest
Change now to SUPEROYL—the all seasons' motor oil... the oil that eliminates changing the grade with the seasons... it's multi-grade! Best for your all year 'round driving. Flows freely—won't thicken... you'll get quick starts... powerfully fast!

Worth 75c A Qt. **.54** Qt. **2.10** Gal.

MOTO-MASTER OIL FILTER ELEMENTS
Maintain new-car performance... lengthen engine life... filters out harmful dirt, sludge, etc. For fresh lively power even up to 5,000 miles between changes. As low as **.94**

SUPEROYL INSTALLED—Penic extra for drain and refill services: Mor-Power Service Stations, Yonge at Davenport and Scarboro Store.

TU. 4-1196

CANADIAN TIRE ASSOCIATE STORE

AV. 5-1101