

# FAST - FAST - FAST MUFFLER INSTALLATION



## MOTO-MASTER MUFFLERS

- QUIET • SAVE GAS
- LONG LIFE
- CUSTOM ENGINEERED FOR PERFECT "NEW CAR" FIT

**4.20**  
DO-IT-YOURSELF DISCOUNT PRICE

CHEVROLET AND PONTIAC (MOST) 1949-53

**Installed 6.45**

MAKE AND YEAR SINGLE EXHAUST PASSENGER CARS ONLY	"Do-It-Yourself" Muffler Discount Price	MUFFLER INSTALLED DISCOUNT PRICE
<b>CHEVROLET</b>		
1949-53 (exc. conv.)	4.20	6.45
1954-58 (exc. conv.)	5.65	7.90
1959	5.65	7.90
<b>PONTIAC</b>		
1951-53, 6-cyl. 20, 22	5.25	7.50
1954, 6-cyl. 20, 22	5.95	8.20
1955-56, 6-cyl. 20, 22 (exc. conv.)	5.65	7.90
1957-59, 20, 22, 70	5.65	7.90
<b>PLYMOUTH</b>		
1949-52, 6-cyl. P18, 20, 22, 23 (exc. conv.)	6.50	8.75
1953-54, 6-cyl. (exc. conv.)	6.50	8.75
1955-59, 6-cyl.	6.50	8.75
<b>DODGE</b>		
1949-52, 6-cyl. D32, 36, 39, 40 (exc. conv.)	6.50	8.75
1953-54, 6-cyl. (exc. conv.)	6.50	8.75
1955 to 1959, 6-cyl.	6.50	8.75
<b>FORD and METEOR</b>		
1949-54, 8-cyl. (exc. conv.)	5.10	7.35
1955-56, 8-cyl.	6.20	8.45
1957, 8-cyl. (exc. conv.)	8.15	10.40
1958-59, 8-cyl. (exc. conv.)	8.20	10.45
<b>VOLKSWAGEN</b>		
1955-59, 4-cyl.	9.95	15.95

Similar savings on other passenger cars, including imports. Big discounts on Moto-Master Exhaust Equipment for commercial vehicles. Brackets for tail pipe installation (extra, where needed), Clamps, each .19

**NEW LOWER PRICES**

SAVE 3 WAYS at CANADIAN TIRE

1. WHOLESALE DISCOUNTS — Save up to 50%
2. SAVE TIME — Swoody, drive-in service
3. SAVE ON LONGER SERVICE LIFE — quality constructed throughout

GUARANTEED BLOW-OUT PROOF



Canada's Largest Brake Specialists

## BRAKE RELINE

COMPLETE FOR ALL 4 WHEELS

**12.95**  
INSTALLED

Chevrolet and Pontiac, most '51-'58  
Ford, Meteor ..... most '49-'59  
Dodge, Plymouth ..... most '49-'56

Original Equipment Quality Bonded Brake Lining

And All These EXTRA Safety Features -

- ★ 12,000-mile or 1-year lining guarantee
- ★ Inspection of hydraulic system
- ★ Addition of SAE-approved heavy-duty brake fluid to the master cylinder to bring it to the proper level
- ★ Emergency cables checked
- ★ Brake shoe action cleaned, freed and lubricated
- ★ Wheel bearings inspected
- ★ Grease retainers checked
- ★ Drums inspected
- ★ 90-day labour guarantee
- ★ 1,000-mile adjustment. FREE

Before the Snow Flies **WINTERIZE** and do it **NOW** before the **RUSH** and before costly Service Calls occur  
This year do it the easy way with a **CTC WINTER SERVICE PACKAGE**

Here's what you get:

- ★ Lubricate door hinges and apply de-icer fluid to door locks
- ★ Supply and install new winter thermostat
- ★ Check fan belts
- ★ Pressure test radiator and check anti-freeze
- ★ Check and tighten heater hose connect
- ★ Supply and change oil and oil filter
- ★ Clean and gap plugs and points
- ★ Check exhaust system
- ★ Supply window washer solvent

Check the Services as complete as you could wish for

Check the Price you'll find it hard to beat especially with our coupons

Do It Soon before the rush starts

SPECIAL PRICE

**12.95**

STORE and SERVICE DEPARTMENT  
Open Thursday and Friday Nights To 9 p.m.  
Saturday To 6 p.m.



Easy-to-Install **TWIN-JET AUTOMATIC 3.98** SET  
**WINDSHIELD WASHER**  
Keep your windshield sparkling clean—free from splash and spatter of passing cars. Twin-jet nozzle sprays cleansing fluid onto each side of the windshield at fingertip touch. Complete kit—universal fit. Exceptional value!

# Get your car **READY** **AHEAD**

## MOR-POWER HI-CAPACITY ARMOR-GLASS

Buy your battery NOW with Winter in mind — at WHOLESALE DISCOUNT SAVINGS



THE MOST POWERFUL BATTERY EVER BUILT!

DRY - CHARGE "POWER - SEALED"

Install the Mor-Power Hi-Capacity and save up to 41%! All the power is "locked in" until the battery is installed in your car... from then on it delivers 34% more power to start with, up to 40% longer power spin... you'll probably never need to buy another battery for your present car. Mor-Power Hi-Capacity Armor Glass... tops for active service, long life and extra savings.

... Rated Far Higher Than "New Car" Batteries

**15.95** 6-VOLT WITH TRADE-IN

Power-Sealed DRY CHARGE  
Fits Chevrolet 1940-54; Dodge 1935-55 (most); Plymouth 1939-55; Pontiac 1949-54, 20-22 series; Studebaker 1939-55 and many others.  
Wet Type—with trade-in ..... **13.95**  
Fits Ford products (most) 1940-54  
Dry Charge—with trade-in ..... **15.45**  
Wet Type—with trade-in ..... **13.45**  
NOTE: Add 50c for installation

**19.95** 12-VOLT WITH TRADE-IN

Power-Sealed DRY CHARGE  
Fits Chevrolet 1955-61; Chrysler (most) 1956-61; Dodge 1956-61; Plymouth 1956-61; Pontiac 1955-61 and many other late models.  
Wet Type—with trade-in ..... **17.95**  
Fits Ford products (most) 1956-61  
Dry Charge—with trade-in ..... **19.95**  
Wet Type—with trade-in ..... **17.95**  
NOTE: Add 50c for installation

## MOR-POWER SUPER SERVICE

POWER-SEALED DRY CHARGE

EQUAL OR BETTER THAN "NEW CAR" EQUIPMENT • ENGINEERED FOR ACTION

Original equipment quality Built for action starts and long faithful service in extreme hot or cold — plus plenty of power for accessories — this winter be assured of peak power performance with Mor-Power SUPER-SERVICE!



30 MONTHS' GUARANTEE plus HAZARD INSURANCE

Car Make and Year	LIST PRICE with Trade-in	DISCOUNT PRICE
Chevrolet 1940-54	15.51	11.95
Chev. 1955-61 (Ex. Corvair)	20.99	14.95
Dodge 1933-55 (most)	15.51	11.95
Dodge 1956-61	20.99	14.95
Ford-Meteor 1940-54 (most)	18.14	11.95
Ford-Meteor 1955 (most)	21.37	12.95
Ford-Meteor 1956-61 (most)	24.36	16.95
Plymouth 1939-55 (most)	15.51	11.95
Plymouth 1956-61	20.99	14.95
Vauxhall 1948-61 (most)	18.49	12.95
Volkswagen	18.49	12.95

Similar savings for other cars — including imports installation — 50c extra  
**\$1.50 to \$2.00** Less for "Wet-Type" Batteries

BARGAIN!

Brand New BATTERY — FITS MANY POPULAR CARS **6.45** WITH TRADE-IN

EASY CREDIT TERMS — Open A C.T.C.

"INTERNATIONAL CHARGE"  
0 DOWN PAYMENT — NOTHING TO PAY FOR 55 DAYS

**NO TRADE NEEDED**  
TO GET THE BEST TIRE BUY IN TOWN but — we will buy Trade-in Tires and PAY YOU CASH — up to \$3 — for unused miles

**BRAND NEW SNOW TRAVEL** Twin-Ply NYLON as low as **12.95** no trade needed

**BRAND NEW TIRES** AS LOW AS **9.95** no trade needed

NO TIME LIMIT ROAD-HAZARD NO MILEAGE LIMIT INSURANCE

**DEDUCT EXTRA 5% DISCOUNT From All Prices Shown**

5% CASH DISCOUNT NOTES ON ALL PURCHASES OF 59c OR MORE (labor excluded) Spend Discount Notes as Money at ... Canadian Tire

Brighten Up Your Car With Our Bargain Special  
On The Latest Polypropylene **Seat Covers**

All Cars & Colours **\$12.55**  
FRONT & BACK

FAST INSTALLATION or "DO-IT-YOURSELF"

Canadian Tire has expert servicemen to take care of any installations you may require... for a moderate service charge. But if you prefer... "Do-It-Yourself"... save on labour! We will supply FREE "Know-How" instruction sheets, and for a moderate rental, loan you the tools. Enquire today.



## Factory Remanufactured ENGINE

With over 257 new parts Dynometer tested to equal or better the performance of a new original equipment unit.

GUARANTEED 90 DAYS OR 4,000 MILES

<b>CHEVROLET</b> 1953-60, 6-cyl. with pan, oil pump <b>165.40*</b>	<b>DODGE-PLYMOUTH</b> 1951-55, 6-cyl., std. trans. with head, pan, oil pump <b>189.65*</b>	<b>FORD</b> 1949-54, V-8 with head, oil pump <b>208.40*</b>
--	--	---

\*A refundable block deposit is required. Amount of refund determined by condition of customer's block. Similar savings for other cars, trucks. Expert installation — at big savings

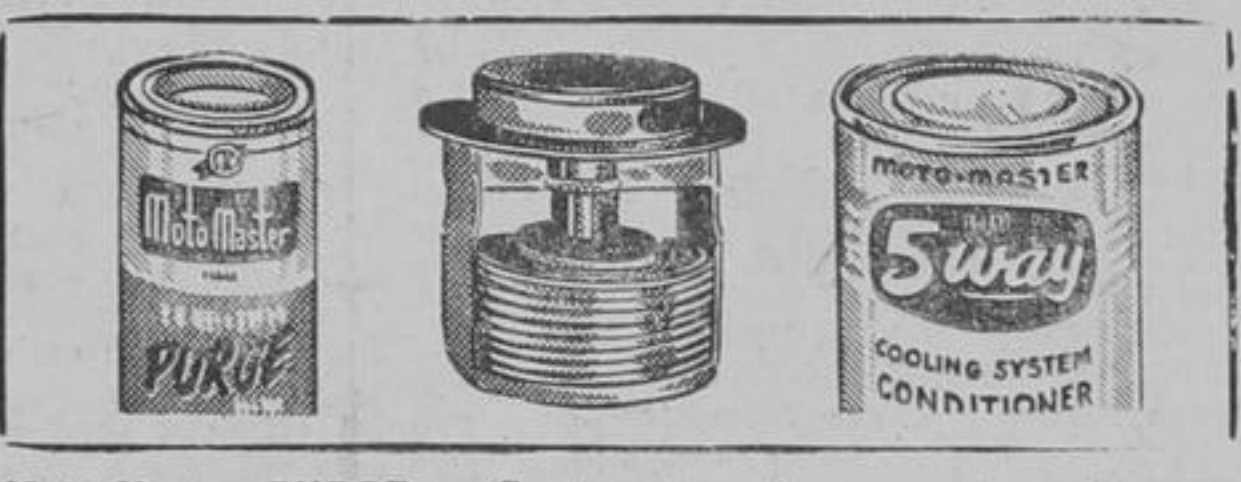
## For safe, smooth driving! MOTO-MASTER Cushion Comfort SHOCK ABSORBERS

SAVE UP TO 50%—on "NEW-CAR" QUALITY

PASSENGER CAR MAKE and YEAR	"DO-IT-YOURSELF" DISCOUNT PRICE	
	Front, pr.	Rear, pr.
<b>CHEVROLET, CAN. PONT.</b>		
1949-54 (exc. Corvette)	\$8.40	\$8.40
1955-57 (exc. Corvette)	9.30	8.40
1958-60 std. susp. (exc. Corvair, Corvette)	9.30	8.40
<b>FORD and METEOR</b>		
1949-51	8.40	8.40
1952-56	8.40	8.40
1957-59 std. susp.	9.30	8.40
1960 std. susp.	9.30	
<b>DODGE and PLYMOUTH</b>		
1951-54	8.40	8.40
1955-60	9.30	8.40

EXPERT INSTALLATION — 1.80 to 3.80 per pr. Similar savings on other cars, including imports Big Discounts for commercial vehicles GUARANTEED 1 FULL-YEAR or 15,000 MILES

## WINTER DRIVING HELPS



- Moto-Master PURGE** — Combination cleaner and conditioner. Removes rust, scale, sludge etc. cleans entire cooling system. Twin can **99**
- Bellows or Pellet Type THERMOSTATS** — Original equip. quality For top engine temperature control, efficient heater performance. From **1.40**
- COOLING SYSTEM CONDITIONER** — Works 5 ways to prevent and cure most common causes of cooling system failure. Works with any anti-freeze 8-oz can **89**
- RAD. HOSE** — Resists anti-freeze, etc. Moulded — as low as **50**
- FAN BELTS** — Prevents overheating, anti-freeze loss. From **60**
- HEATER HOSE** — Resists corrosion, etc. Per ft from **17**
- IGNITION SPRAY** — Stops common ignition troubles. 6-oz. **99**
- RAD. FLUSH** — Improves circulation, radiator efficiency. 10-oz. can **.49**
- RAD. SOLDER** — Permanently seals leaks. Liquid. 10-oz. can **.44**
- ENGINE WELD** — Securely welds leaks in cooling system. 20-oz. can **.69**