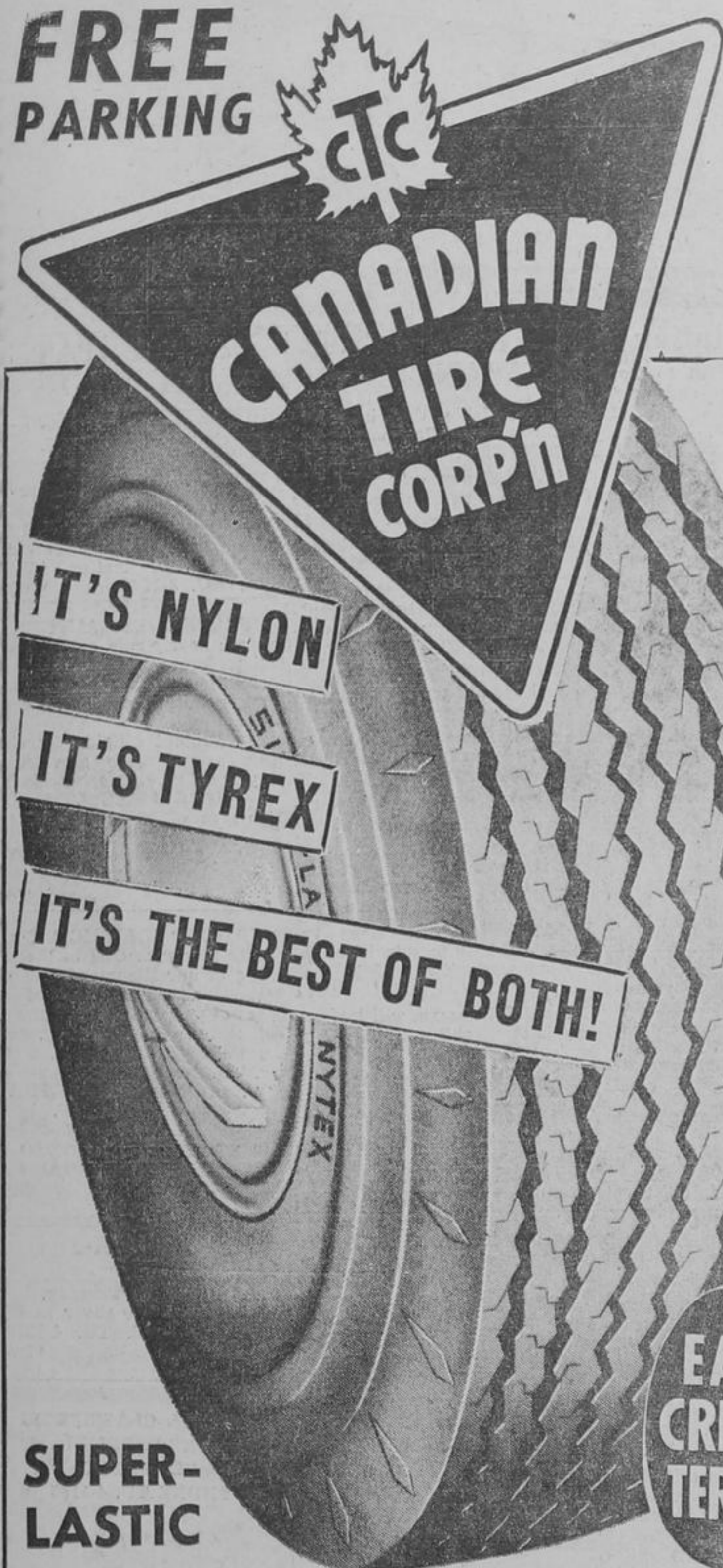


**FREE PARKING**



**SUPER-LASTIC**

**EASY CREDIT TERMS**

# NYTEX

**ANOTHER FIRST FOR CANADIAN TIRE RESEARCH and ENGINEERING!**

NOW!—For the first time, the Canadian motorist can enjoy ALL the desirable, physical and chemical characteristics of NYLON and TYREX — Combined in this GREAT NEW TIRE — Super-Lastic NYTEX. Yes, you get the BEST OF BOTH... NYLON — for longest, safe mileage and greatest resistance to pothole and curb impact shock damage... TYREX — first choice with new car makers, because it ensures the smoothest, quietest ride... Get the BEST OF BOTH — in Super-Lastic NYTEX—Premium quality—at Canadian Tire's Wholesale Discount Savings!

SIZE	PRICE AFTER ALLOWANCE FOR 'LEFT-OVER' MILEAGE ON YOUR OLD TIRE	SALE PRICE WITHOUT TRADE-IN
525/16	10.95 to 12.95	13.95
560/15	11.45 to 13.45	14.45
590/15	11.95 to 13.95	14.95
640/15	12.95 to 14.95	15.95
650/16	14.95 to 16.95	17.95
670/15	13.95 to 15.95	16.95
710/15	15.95 to 17.95	18.95
750/14	13.95 to 15.95	16.95
760/15	17.95 to 19.95	20.95
800/14	15.95 to 17.95	18.95
800/15	20.95 to 22.95	23.95
850/14	17.95 to 19.95	20.95

TUBELESS—\$2 extra (most sizes)      WHITEWALLS \$3 extra  
Tire Installation—50c extra

## INSURANCE - GUARANTEE

It's nice to know—that wherever you go—that the nearest Canadian Tire State will honor the Super-Lastic ROAD HAZARD INSURANCE AND 5-YEAR GUARANTEE, in the event of tire failure due to workmanship, materials — Blowsouts, Accidents, Glass Cuts or many other normal driving hazards. Customer pays only for service rendered by tire under guarantee.

**Coolest Running Tire Ever Built!**

## NEW! Super-Lastic DOUBLE-STRENGTH TWIN-PLY NYLON

PUT BRAND NEW TIRE SAFETY ON YOUR CAR — AT LOWEST COST — THANKS TO CANADIAN TIRE'S WHOLESALE DISCOUNT SAVINGS.

Millions of miles of driving on over 100,000 of these TWIN-PLY NYLON tires in the past test year have not produced a single reported case of a blowout. Double-Strength TWIN-PLY NYLON contains by weight, the same amount of the finest Dupont Nylon Tire Cord, but by being twice as big it's twice as strong as the tire cord used in conventional tire building. TWIN-PLY NYLON—Lightweight, for easier road handling! More flexible, to absorb road shock.

RUMOR HAS TWIN-PLY TIRES ON MANY FORTHCOMING 1962 CARS—SEE THEM NOW — BUT ONLY AT CANADIAN TIRE.

SIZE	PRICE AFTER ALLOWANCE FOR 'LEFT-OVER' MILEAGE ON YOUR OLD TIRE	SALE PRICE WITHOUT TRADE-IN
600/16	9.95 to 11.95	12.95
650/16	11.95 to 13.95	14.95
550/15	10.95 to 12.95	13.95
640/15	9.95 to 11.95	12.95
670/15	9.95 to 11.95	12.95
710/15	10.95 to 12.95	13.95
750/14	9.95 to 11.95	12.95

TUBELESS—\$2 extra (most sizes)      Tire Installation—50c extra  
Road Hazard Insurance Plus 5-Year Guarantee



# Greater savings HERE

## Get your BRAKES ADJUSTED

... FOR ONLY **1.19** ANY CAR Including Imports

**DON'T CHANCE BAD BRAKES**

**DRIVE CAREFULLY**

Your Car Gets This Full Treatment

- Pack front wheel bearings
- Adjust brakes, including emergency brake
- Add approved heavy-duty brake fluid (superior to new-car quality) to master cylinder

**EXPERT BRAKE RELINING—as low as \$12.95**



**SPARE TIRE COVER** and tool holder. Keeps trunk neat, tidy **1.69** (Less tools)

**MOTORISTS' REPAIR MANUALS** Handbook on maintenance and repair with easy-to-follow instructions, illustrations on electrical systems, engine, rear-end, etc. For Ford, Chev., Plym. Volkswagen **2.59**

OUR SERVICE DEPARTMENT IS OPEN **THURS., & FRI., TO 9 P.M.**

Save Safely!



## MOTO-MASTER "Extra Life" MUFFLERS

• LONG LIFE • SAVE GAS • QUIET

MAKE AND YEAR (SGL. EX. PASS. CARS ONLY)	"Do-It-Yourself" Muffler Discount Price	MUFFLER INSTALLED DISCOUNT PRICE	MUFFLER AND TAIL PIPE INSTALLED DISCOUNT PRICE
<b>CHEVROLET</b>			
1949-53 (exc. conv.)	4.95	7.20	11.55
1954-58 (exc. conv.)	6.60	8.85	13.20 to 13.80
1959	6.60	8.85	14.50
<b>PONTIAC</b>			
1951-53, 6-cyl. 20, 22	5.25	7.50	11.90
1954, 6-cyl. 20, 22	5.95	8.20	12.60
1955-56, 6-cyl. 20, 22 (exc. conv.)	6.60	8.85	13.40 to 13.65
1957-59, 6-cyl. 20, 22, 70	6.60	8.85	13.80 to 14.50
<b>PLYMOUTH</b>			
1949-52, 6-cyl. P18, 20, 22, 23 (exc. conv.)	7.65	9.90	11.25
1953-54, 6-cyl. (exc. conv.)	7.65	9.90	14.30 to 14.65
1955-59, 6-cyl.	7.65	9.90	14.05 to 14.25
<b>DODGE</b>			
1949-52, 6-cyl. D32, 36, 39, 40 (exc. conv.)	7.65	9.90	15.25
1953-54, 6-cyl. (exc. conv.)	7.65	9.90	14.40 to 14.65
1955-59, 6-cyl.	7.65	9.90	14.05 to 14.25
<b>FORD and METEOR</b>			
1949-54, 8-cyl. (exc. conv.)	5.98	8.23	12.38 to 12.58
1955-56, 8-cyl.	7.30	9.55	13.90
1957, 8-cyl. (exc. conv.)	8.15	10.40	15.20
1958-59, 8-cyl. (exc. conv.)	8.20	10.45	15.35
<b>VOLKSWAGEN 1955-59, 4-cyl.</b>			
	9.95	15.95	18.05

Similar savings on other passenger cars, including imports. Big discounts on Moto-Master Exhaust Equipment for commercial vehicles. Brackets for tail pipe installation (extra, where needed). Clamps, each .19

Just Say—**"CHARGE IT"** NO INTEREST ON 30 DAY ACCOUNTS

Custom engineered to perfect "new-car" fit

**15-MINUTE INSTALLATION**

FREE EXHAUST SAFETY CHECK—Just drive to your nearest Canadian Tire Store —no obligation, glad to be of service.

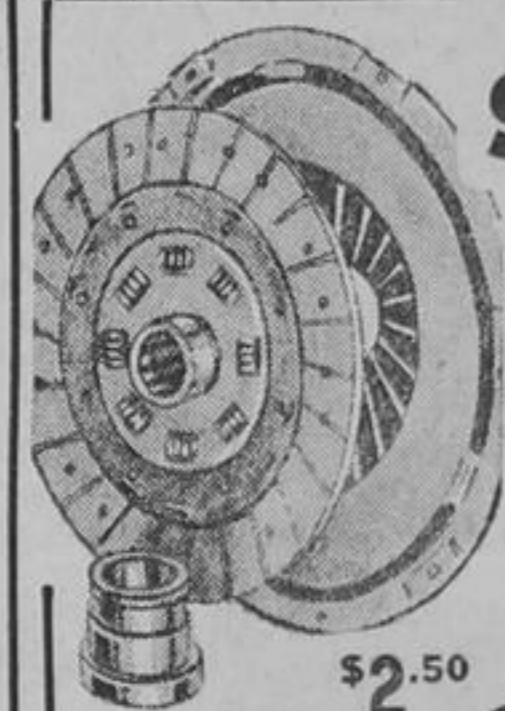
IRON-CLAD GUARANTEE A new muffler if it blows out—no time limit.

## For safe, smooth driving! MOTO-MASTER Cushion Comfort SHOCK ABSORBERS

SAVE UP TO 50%—on "NEW-CAR" QUALITY

PASSENGER CAR MAKE AND YEAR	"DO-IT-YOURSELF" DISCOUNT PRICE	
	Front, pr.	Rear, pr.
<b>CHEVROLET, CAN. PONT.</b>		
1949-54 (exc. Corvette)	\$8.40	\$8.40
1955-57 (exc. Corvette)	9.30	8.40
1958-60 std. susp. (exc. Corvair, Corvette)	9.30	8.40
<b>FORD and METEOR</b>		
1949-51	8.40	8.40
1952-56	8.40	8.40
1957-59 std. susp.	9.30	8.40
1960 std. susp.	9.30	
<b>DODGE and PLYMOUTH</b>		
1951-54	8.40	8.40
1955-60	9.30	8.40

EXPERT INSTALLATION — 1.80 to 3.80 per pr.  
Similar savings on other cars, including imports  
Big Discounts for commercial vehicles  
GUARANTEED 1 FULL-YEAR or 15,000 MILES



**SAVE SAFETY WITH YOUR C.T.C. EXTRA 5% Discount BONUS NOTES**

**\$2.50** FOR YOUR OLD CLUTCH ASSEMBLY

**CLUTCH ASSEMBLY EXCHANGE**

We will exchange your present Spring Centre Clutch Plate and Pressure plate for a factory rebuilt matched assembly... for smooth, silent clutch operation. Complete Clutch Assembly Exch., including imports, as low as **14.95**

Clutch Plate Only Exch., including imports, as low as **4.65**

Clutch Release Bearings — for most cars, including imports... **.79 to 4.10**

**NO WIPING OFF — DRIES WITHOUT STREAKS OR SPOTS WONDER SPEEDY AUTO WASH**

A tablespoon in 1/2 pail of water for a foamy shampoo... removes grime, dirt, scum, etc. Cuts car washing time in half.

**LIQUID**

5 1/2 fl. oz. .34  
12 fl. oz. .54

**POWDER**

1/2 pint .29  
quart .79

**NEWEST, MOST ADVANCED LIQUID POLISH and CLEANER YET! VELVET-SHEEN Wax Polish-Cleaner**

Waxes as it cleans... no extra work and does it in half the time. Provides double protection... solid wax plus weather-guard silicones... to preserve and brighten your car's finish in one easy application. Worth \$2.50 20-oz. can

**1.79**

**SAVE — ON SPEEDY CAR WASHING AUTO WASH BRUSH**

Good "car grooming" starts with a good wash brush... like this oval shaped beauty. Thickly tufted synthetic top quality bristles set in a durable plastic brush head. Aluminum handle with water shut-off. 17" overall.

**1.19**

**WHITEWALL Tire Cleaner**

Push button can lets you spray on — wipe off!... so easy to do! Makes tires sparkling snow-white. Big 16-oz. can **.99**

**MOTO-MASTER QUICK WASH**

Easy way to shine car. Just apply, let dry, then wipe to a shine. No need to hose down car before applying. 16 fluid oz. **1.59**

**CHROME-METAL POLISH**

Removes rust, too! Restores sparkling lustre and puts a protective film on at the same time. 1/2-pint **.42**

**SEAT COVER and Upholstery Cleaner**

Concentrated foam type. Refreshes and restores all upholstery fabrics. 8-oz bottle with big 5 x 2" brush. Value **.94**

## Complete low-cost radiator maintenance!

WORKS 5 WAYS TO PREVENT and CURE MOST COMMON CAUSES OF COOLING SYSTEM FAILURE!

**Moto-Master 5-WAY COOLING SYSTEM CONDITIONER**

For all water-cooled engines... use it all year round — works perfectly with all types of anti-freeze. Completely conditions your car's cooling system 5 ways: 1 — lubricates water pump, 2 — Prevents or stops leaks, 3 — Resists rust and scale, 4 — Prevents seepage, 5 — Seals cracked blocks.

**.89**

**Factory Re-built, 4 and 12-volt Voltage Regulator**

Protect your car's battery generator and electrical system with an Auto-Lite, Delco Remy or Ford voltage regulator completely rebuilt by experts to original manufacturer's specification

EXCHANGE PRICE for most cars **3.95**

**Re-manufactured CARBURETORS**

Trade in your old worn out Carburetor get a Moto Master re-manufactured original equipment carburetor. Save as much as 50%

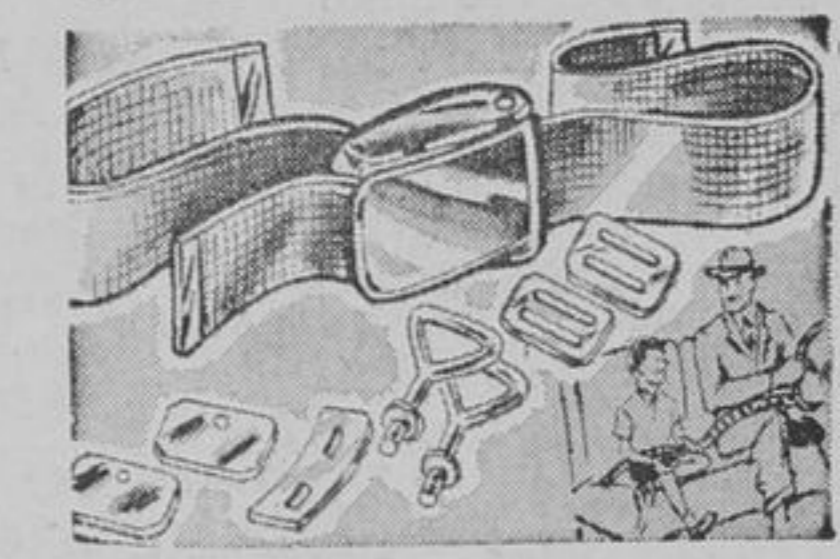
EXCHANGE PRICE AS LOW AS each **6.95**

**Brand New Moto-Master FUEL PUMPS**

Gives you thousands of extra miles of dependable service for a lot less money than other equipment replacements or rebuilt pumps. Engineered for 50,000 miles of trouble-free performance

AS LOW AS **2.80**

## Auto Safety SEAT BELT

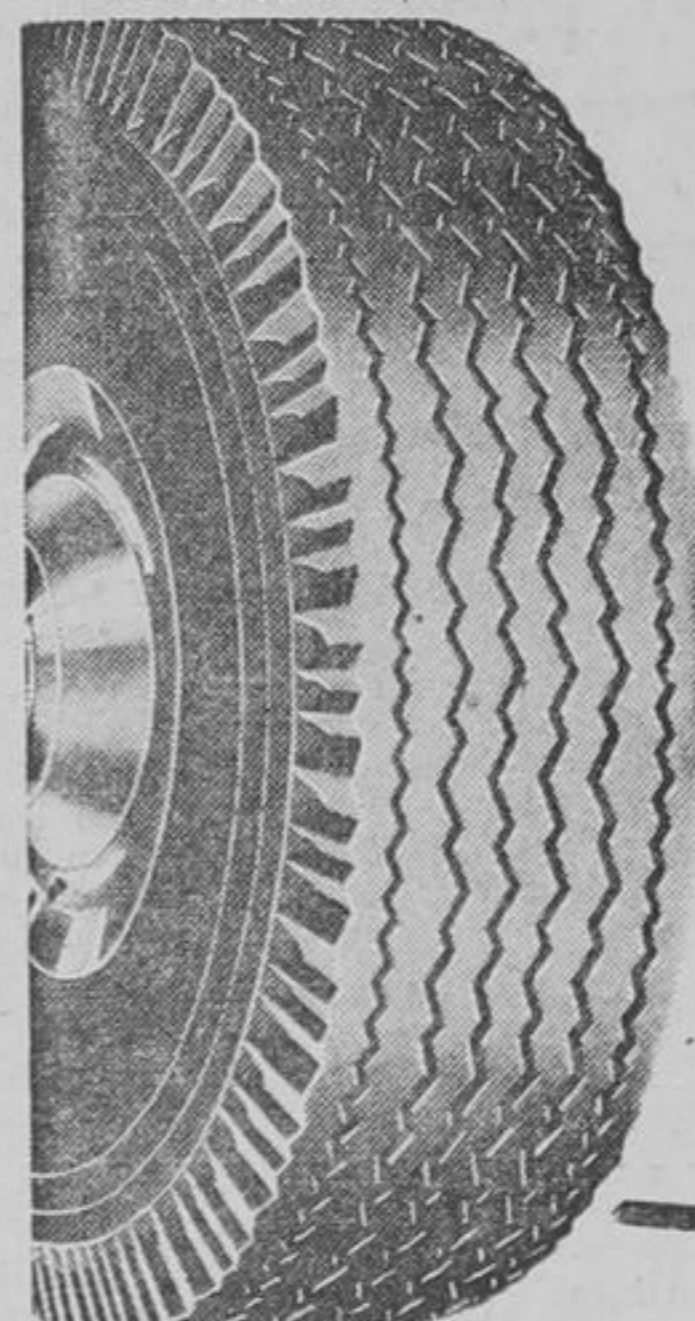


**\$0.09 each** Installed **\$2.00**

EASY CREDIT TERMS... Open a

## C.T.C. INTERNATIONAL CHARGE

NO DOWN PAYMENT  
NOTHING TO PAY FOR 50 DAYS



Limited Quantity **BRAND NEW**

**10.95** NO TRADE

AS LOW AS **8.95** WITH TRADE-IN

600/16 670/15 750/14\*  
\*750/14 TUBELESS — \$2 extra  
INSTALLATION — 50c

FIRSTS ONLY  
• NO "SECONDS"  
• NO RETREADS

5-YEAR GUARANTEE against defects in workmanship and material