

FREE PARKING



IT'S NYLON
IT'S TYREX
IT'S THE BEST OF BOTH!

SUPER-LASTIC

EASY CREDIT TERMS

NYTEX

ANOTHER FIRST FOR CANADIAN TIRE RESEARCH and ENGINEERING!

NOW!—For the first time, the Canadian motorist can enjoy ALL the desirable, physical and chemical characteristics of NYLON and TYREX—Combined in this GREAT NEW TIRE—Super-Lastic NYTEX. Yes, you get the BEST OF BOTH—NYLON—for longest, safe mileage and greatest resistance to pothole and curb impact shock damage... TYREX—first choice with new car makers, because it ensures the smoothest, quietest ride... Get the BEST OF BOTH—in Super-Lastic NYTEX—Premium quality—at Canadian Tire's Wholesale Discount Savings!

SIZE	PRICE AFTER ALLOWANCE FOR 'LEFT-OVER' MILEAGE ON YOUR OLD TIRE	SALE PRICE WITHOUT TRADE-IN
525/16	10.95 to 12.95	13.95
560/15	11.45 to 13.45	14.45
590/15	11.95 to 13.95	14.95
640/15	12.95 to 14.95	15.95
650/16	14.95 to 16.95	17.95
670/15	13.95 to 15.95	16.95
710/15	15.95 to 17.95	18.95
750/14	13.95 to 15.95	16.95
760/15	17.95 to 19.95	20.95
800/14	15.95 to 17.95	18.95
800/15	20.95 to 22.95	23.95
850/14	17.95 to 19.95	20.95

TUBELESS—\$2 extra (most sizes) WHITEWALLS \$3 extra
Tire Installation—50c extra

INSURANCE - GUARANTEE

It's nice to know—that wherever you go—that the nearest Canadian Tire Store will honor the Super-Lastic ROAD HAZARD INSURANCE AND 5-YEAR GUARANTEE, in the event of tire failure due to workmanship, materials—Blowouts, skidding, Glass Cuts or many other normal driving hazards. Customer pays only for service rendered by tire under guarantee.

Coolest Running Tire Ever Built!

NEW! Super-Lastic DOUBLE-STRENGTH TWIN-PLY NYLON PUT BRAND NEW TIRE SAFETY ON YOUR CAR—AT LOWEST COST—THANKS TO CANADIAN TIRE'S WHOLESALE DISCOUNT SAVINGS.

Millions of miles of driving on over 100,000 of these TWIN-PLY NYLON tires in the past few years have not produced a single reported case of a blowout. Double-Strength TWIN-PLY NYLON contains by weight, the same amount of the finest Dupont Nylon Tire Cord, but by being twice as big is twice as strong as the tire cord used in conventional tire building. TWIN-PLY NYLON—Lightweight, for easier road handling! More flexible, to absorb road shock.

RUMOR HAS TWIN-PLY TIRES ON MANY FORTHCOMING 1962 CARS—SEE THEM NOW—BUT ONLY AT CANADIAN TIRE.

SIZE	PRICE AFTER ALLOWANCE FOR 'LEFT-OVER' MILEAGE ON YOUR OLD TIRE	SALE PRICE WITHOUT TRADE-IN
600/16	9.95 to 11.95	12.95
650/16	11.95 to 13.95	14.95
550/15	10.95 to 12.95	13.95
640/15	9.95 to 11.95	12.95
670/15	9.95 to 11.95	12.95
710/15	10.95 to 12.95	13.95
750/14	9.95 to 11.95	12.95

TUBELESS—\$2 extra (most sizes) Tire Installation—50c extra
Road Hazard Insurance Plus 5-Year Guarantee



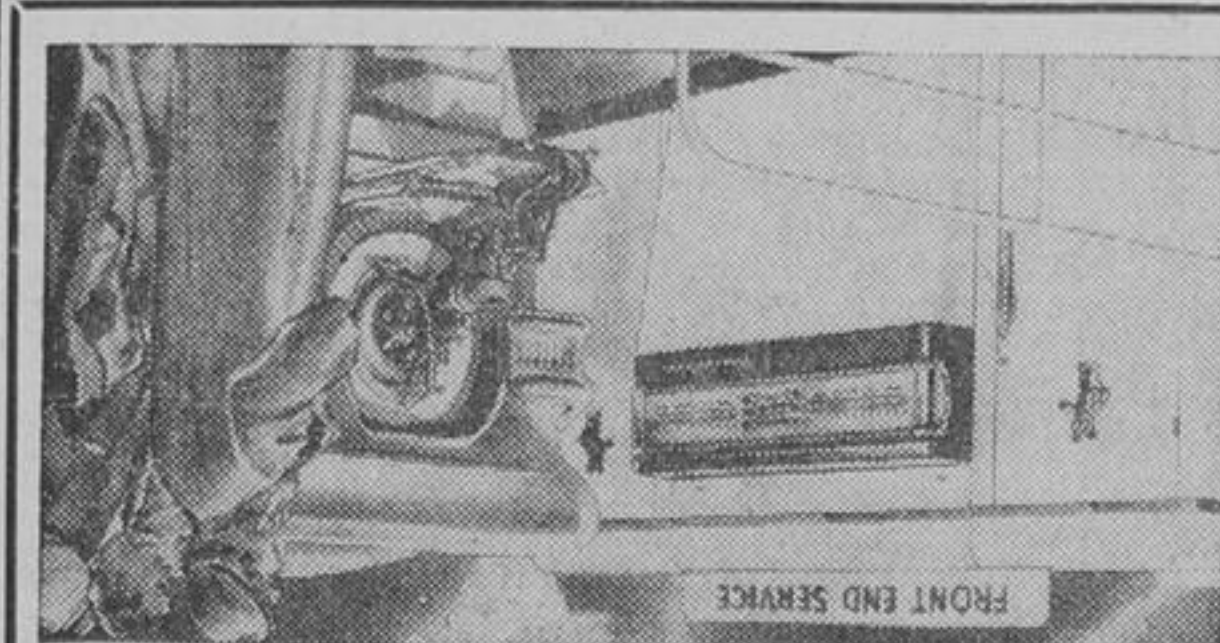
DRIVE SAFELY



SERVICE DEPARTMENT AND STORE OPEN THURSDAY AND FRIDAY 9 A.M. TO 9 P.M.

Our Service Department is equipped to handle brakes, clutch, valve jobs, etc., on all English and Foreign cars.

AS A HOLIDAY BONUS GET OUR FREE BRAKE & STEERING SAFETY CHECKS



FREE... Front End Alignment Check Including:
+ STEERING ASSEMBLY
+ FRONT & REAR SPRINGS
+ SHOCK ABSORBERS

Also available for popular English and foreign cars
On the new Bear Electronic Telaliner.



FREE BRAKE SAFETY CHECK Including:
BRAKE ADJUSTMENT
ADD APPROVED HEAVY DUTY BRAKE FLUID
PACK FRONT WHEEL BEARINGS

Save Safely!



MOTO-MASTER "Extra Life" MUFFLERS
LONG LIFE • SAVE GAS • QUIET

MUFFLERS for most English cars
Just Say—
"CHARGE IT"
NO INTEREST ON 30 DAY ACCOUNTS
Custom engineered to perfect "new-car" fit
15-MINUTE INSTALLATION
FREE EXHAUST SAFETY CHECK—Just drive to your nearest Canadian Tire Store—no obligation, glad to be of service.
IRON-CLAD GUARANTEE
A new muffler if it blows out—no time limit.

MAKE AND YEAR (SGL. EX. PASS. CARS ONLY)	"Do-It-Yourself" Muffler Discount Price	MUFFLER INSTALLED DISCOUNT PRICE	MUFFLER AND TAIL PIPE INSTALLED DISCOUNT PRICE
CHEVROLET			
1949-53 (exc. conv.)	4.95	7.20	11.55
1954-58 (exc. conv.)	6.60	8.85	13.20 to 13.80
1959	6.60	8.85	14.50
PONTIAC			
1951-53, 6-cyl. 20, 22...	5.25	7.50	11.90
1954, 6-cyl. 20, 22	5.95	8.20	12.60
1955-56, 6-cyl. 20, 22 (exc. conv.)	6.60	8.85	13.40 to 13.65
1957-59, 6-cyl. 20, 22, 70	6.60	8.85	13.80 to 14.50
PLYMOUTH			
1949-52, 6-cyl. P18, 20, 22, 23 (exc. conv.)	7.65	9.90	15.25
1953-54, 6-cyl. (exc. conv.)	7.65	9.90	14.30 to 14.65
1955-59, 6-cyl.	7.65	9.90	14.05 to 14.25
DODGE			
1949-52, 6-cyl. D32, 36, 39, 40 (exc. conv.)	7.65	9.90	15.25
1953-54, 6-cyl. (exc. conv.)	7.65	9.90	14.40 to 14.65
1955-59, 6-cyl.	7.65	9.90	14.05 to 14.25
FORD and METEOR			
1949-54, 8-cyl. (exc. conv.)	5.98	8.23	12.38 to 12.58
1955-56, 8-cyl.	7.30	9.55	13.90
1957, 8-cyl. (exc. conv.)	8.15	10.40	15.20
1958-59, 8-cyl. (exc. conv.)	8.20	10.45	15.35
VOLKSWAGEN 1955-59, 4-cyl.			
	9.95	15.95	18.05

Similar savings on other passenger cars, including imports
Big discounts on Moto-Master Exhaust Equipment for commercial vehicles.
Brackets for tail pipe installation (extra, where needed). Clamps, each .19

Moto-Master FRONT END PARTS Save up to 40%!

MAKE and YEAR	BALL JOINTS		TIE ROD ENDS	COIL SPRINGS
	Upper	Lower		
CHEVROLET and PONTIAC				
1955-57	8.70	8.50	3.60 pr.	10.90 pr.
1958-60	8.70	8.50	3.60 pr.	11.20 pr.
FORD and METEOR				
1955-56	14.90	15.90	3.20 pr.	12.40 pr.
1957-59	14.90	14.90	3.20 pr.	13.70 pr.
OLDSMOBILE				
1957-58	7.75	10.55	5.10 pr.	19.00 pr.
1959	8.70	11.20	5.10 pr.	19.00 pr.

TORSION BARS Dodge and Plymouth 1957-58, Each 9.95 Chrysler Windsor, DeSoto Firedome, 1957-58, Each 9.95

Change now to...

SUPEROYL MULTI-GRADE MOTOR OIL
... refined from 100% Pure Pennsylvania—richest and costliest crude oil
Designed with your car in mind... for your type of driving. Provides rich, full-time lubrication at every speed, temperature—for more power, greater gas economy. Fully detergent. Keeps new engines new longer, gives a lift to older engines. New power, smoother, quieter performance with SUPEROYL.

WORTH 75c A QT.
.54 qt. 2.10 GAL.

SUPEROYL INSTALLED—Pennies extra for drain and refill service. Motor-Power Service Station, Yonge et Davenport.

Oil Filter Element every 5000 MILES

MOTO-MASTER CARTRIDGE-TYPE OIL FILTER Elements

Provides complete engine protection against harmful dirt and sludge. Keeps oil clean, full bodied to lengthen engine life... maintain "new-car" pep.

Chev., Pont., 6-cyl., 1949-60	1.10
Ford and Meteor, V-8, 1941-54	1.10
1956-60	2.35
Dodge, Plym., 6-cyl., 1953-59	1.05

Similar low prices for other cars

Finest car radio ever offered at such a low price!

WITH AERIAL, DASH-MATCHING KIT AND INSTALLATION INCLUDED

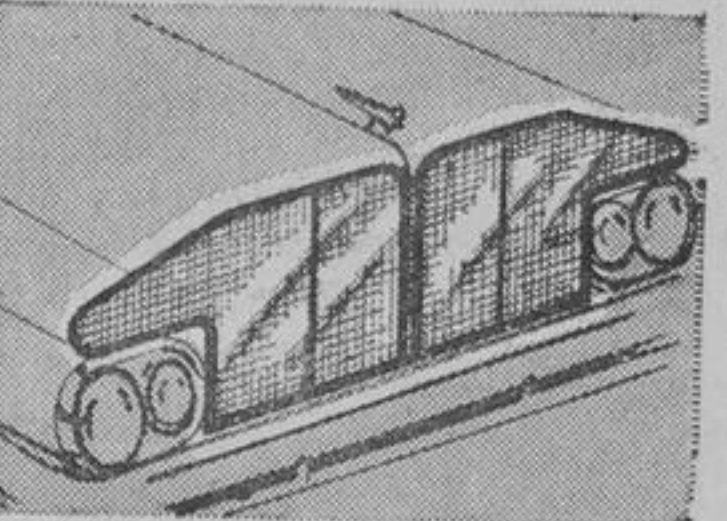
All new for true Hi-Fi performance. There's no tubes... less battery drain... no annoying warm-up period. Practically eliminates interference, static. No hum! No blasting or fading. Illuminated slide rule dial. Reverse polarity for positive or negative ground.

ALL NEW SUPERTONE "CUSTOM 812" Installed with Aerial 64.95

ALL TRANSISTOR CAR RADIO

Fibre Glass Bug Screen

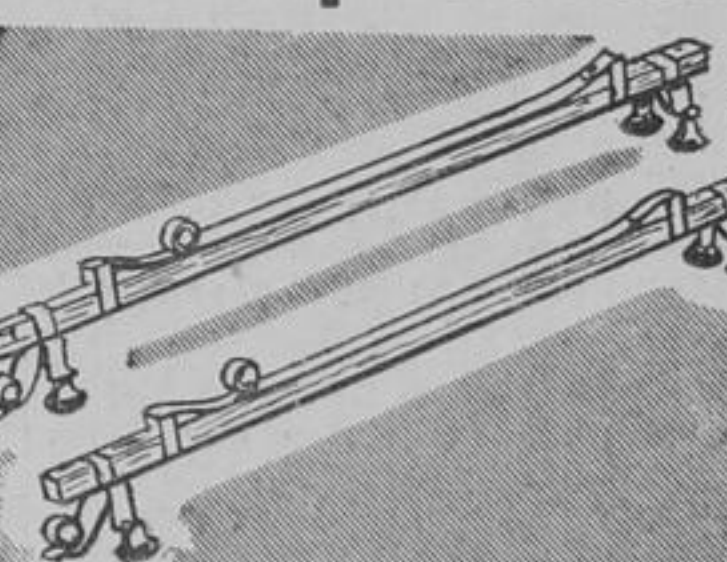
4.29 MOST CARS



Wire frame, rustproof fibre glass mesh screen... fits perfectly on most cars. Smart modern styling with new contour design for added beauty. Protects front end from flying stones and bugs... prevents clogging radiator... no boiling over or expensive paint retouching.

"Hercules" Car-Top Carrier

6.95



The most popular, versatile carrier yet! Hardwood crossbars, weather-resistant finish. Oversize suction cups with safety hold-down straps. 42" bars for European cars; 48" bars for standard cars. An exact match for most 1957-61 General Motors, Ford and Chrysler products. 6-oz. aerosol spray bomb

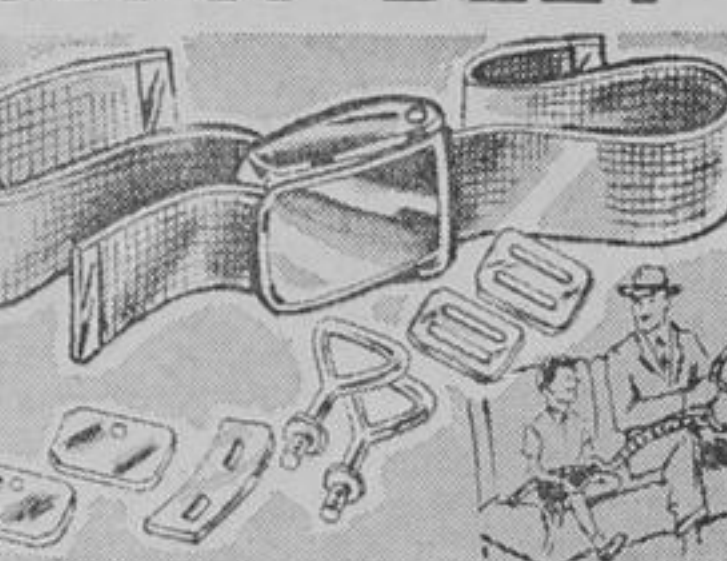


Push-Button Can Takes the Work out of Painting—No brush—No mixing—No Spray-Gun—No Messy clean-up!

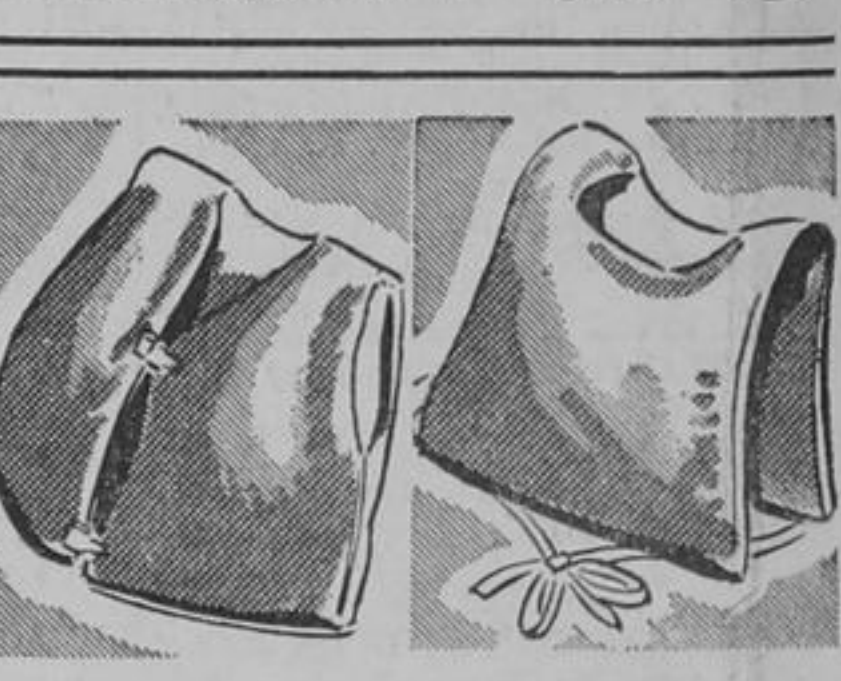
COLOR-MATCH
An easy-to-use touch up for your car... fix-up traffic scars, stone marks, etc. Ideal for home and workshop use, too! Over 200 matching colors. An exact match for most 1957-61 General Motors, Ford and Chrysler products. 6-oz. aerosol spray bomb .98

Auto Safety SEAT BELT

8.69 Each



Removed to be original equipment on 1962 cars. The greater the strain, the more securely it holds. 2" wide nylon strap with aircraft type safety buckle. Hardened steel floor brackets. Choose from grey, green, red or blue. Install safety seat belts... the life you save may be your own.



Gov't Approved Safety Vests
ADULTS' "SPORTS-TER" SAFETY VEST—with quick snap fasteners. Kapok sealed in vinyl inserts with adjustable strap 4.98
KIDDIES' KAPOK VEST—Supports up to 50 lbs. Over the head type, with waist tie tapes. Orange colour only. 2.98

RATCHET ACTION BUMPER JACK

5.65



With torsion-spring hook. Safe, fast, easy to operate. Fits snugly onto recessed and new wrap-around bumpers. 11-gauge steel channel with all steel housing and heavy duty steel base. 36" high.

MOTO-MASTER SHOCK SPRINGS

5.98 to 7.85 pr.



For a smooth, level ride when car is heavily loaded. Practically eliminates rear end drag and excessive cornering. Will handle up to 750 lbs. extra load—with ease. Easy to install.

MOTORISTS' REPAIR MANUALS Spare Tire Cover

Handbook on maintenance and repair with easy-to-follow instructions, illustrations on electrical systems, engine, rear-end, etc. For Ford, Chev., Plym. Volkswagen 2.59

... and tool holder. Keeps trunk neat, tidy 1.69 (Less tools)