

**OUR ANNUAL**



**year end CLEARANCE**

# USED CAR SALE

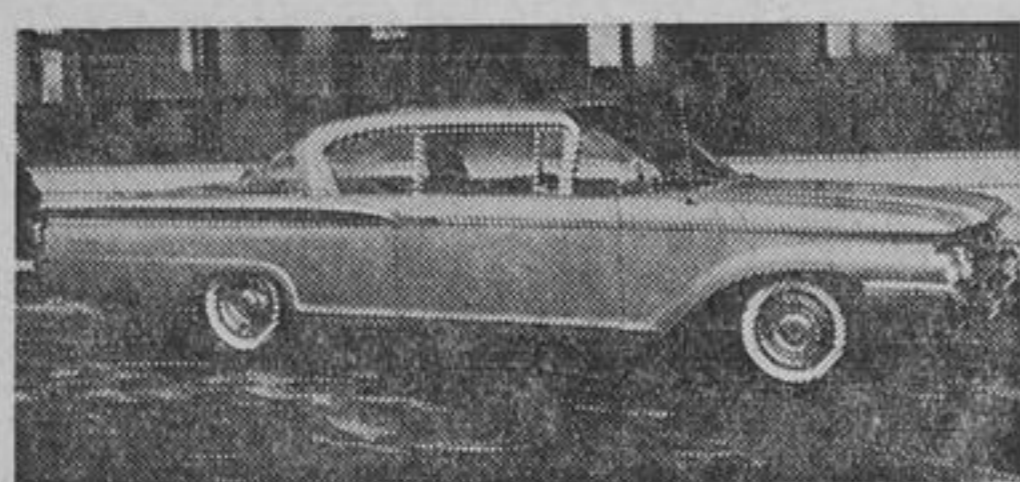
**STARTS THURS., DEC. 15 All Cars Must Go!**

We must clear our complete stock of new 1960 cars and all used cars before our fiscal year ends Dec. 31st. Each unit has been depreciated to a figure much below what you'll pay for a similar car over the next eight months. Our entire stock is Sale Priced & we're sure you'll find just the car you've been looking for at a price you won't duplicate ANYWHERE!



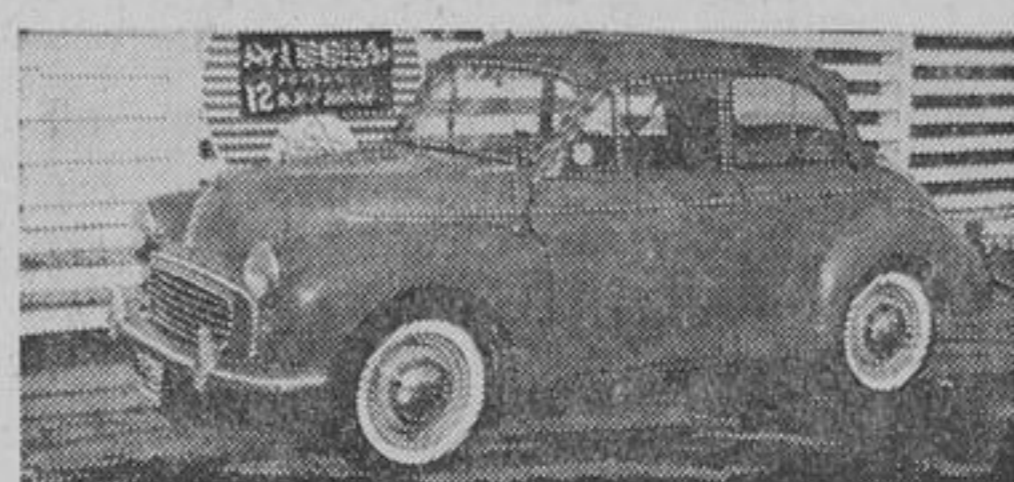
1960 FORD FAIRLANE 500 SEDAN Moonmist Yellow with automatic, white-walls and custom radio, company demonstrator. Reg. \$3675.

**YEAR END PRICE \$2459**



1960 MONARCH LUCERNE 2 DOOR Hardtop. Completely power equipped, metallic grey with red interior. New car warranty. Reg. list price \$4460.

**YEAR END PRICE \$3195**



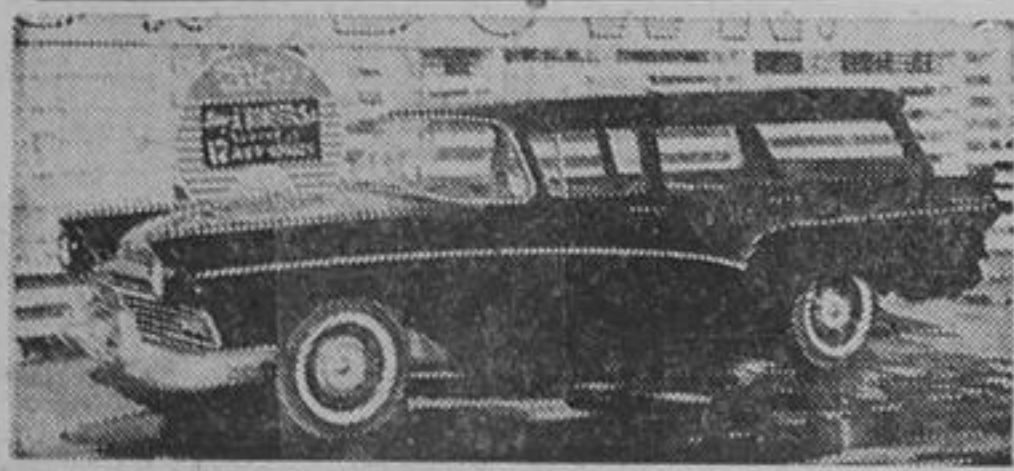
1958 MORRIS CONVERTIBLE Here's the ideal second car that's just like a new one. Reg. \$1045.

**YEAR END PRICE \$799**



1958 PREFECT SEDAN Here's real economy at a bargain price. Reg. \$999.

**YEAR END PRICE \$799**



1957 FORD 9 PASS. STATION WAGON V8 with standard transmission. Radio and heater. Reg. \$1695.

**YEAR END PRICE \$1325**



1958 PONTIAC DELUXE 2 DOOR Two-tone blue and white, standard transmission, custom radio. Reg. \$1595.

**YEAR END PRICE \$1423**



1956 METEOR CUSTOM COACH Automatic and Radio, two-tone green. Re-conditioned. Reg. \$1195.

**YEAR END PRICE \$889**



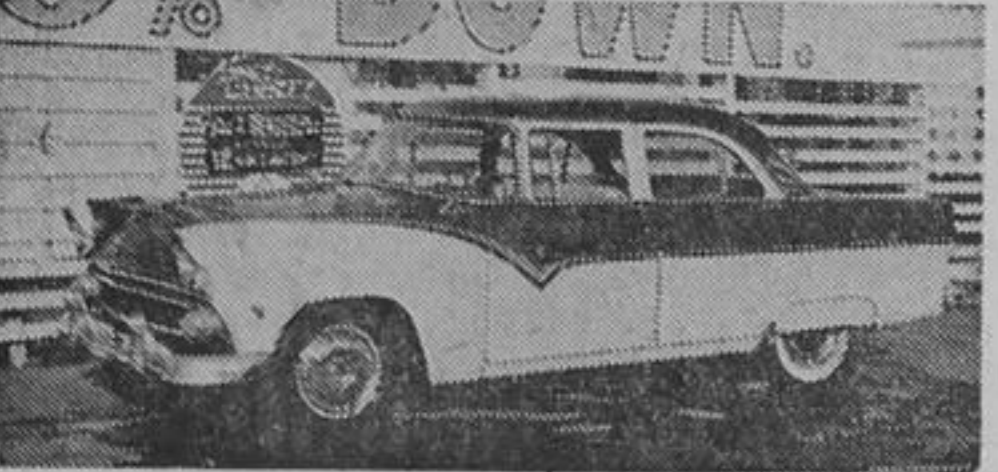
1956 CHEVROLET 2 DOOR Automatic and radio. Reg. \$1295.

**YEAR END PRICE \$975**

**AS LOW AS 10% DOWN**

**No Payments Until February**

**SPECIAL - THURS. 10 a.m.**



1955 FORD FAIRLANE Automatic transmission and other extras. Reg. \$899.

**DAILY SPECIAL \$466**

**SPECIAL - FRI. 12 Noon**



1956 FORD RANCH WAGON Metallic brown with brown interior. Save \$\$\$ on this one. Reg. \$995.

**DAILY SPECIAL \$651**

**SPECIAL - SAT. 9 a.m.**



1956 FORD COACH Needs slight body work. Good mechanical. Reg. \$899.

**DAILY SPECIAL \$499**

**SPECIAL - MON. 5 p.m.**



1959 DODGE 8 CYLINDER COACH Here's a car almost like new at a 4-year-old price. Reg. \$1795.

**DAILY SPECIAL \$1399**



1956 RAMBLER STATION WAGON Deluxe model, clean as new, reconditioned. Reg. \$1295.

**YEAR END PRICE \$945**



1955 FORD COUNTRY SQUIRE WAGON Automatic and radio. A real sharp one. Reg. \$1195.

**YEAR END PRICE \$899**



1955 CHEVROLET RANCH WAGON Reconditioned and repainted. An outstanding car at a low, low price. Reg. \$1095.

**YEAR END PRICE \$859**



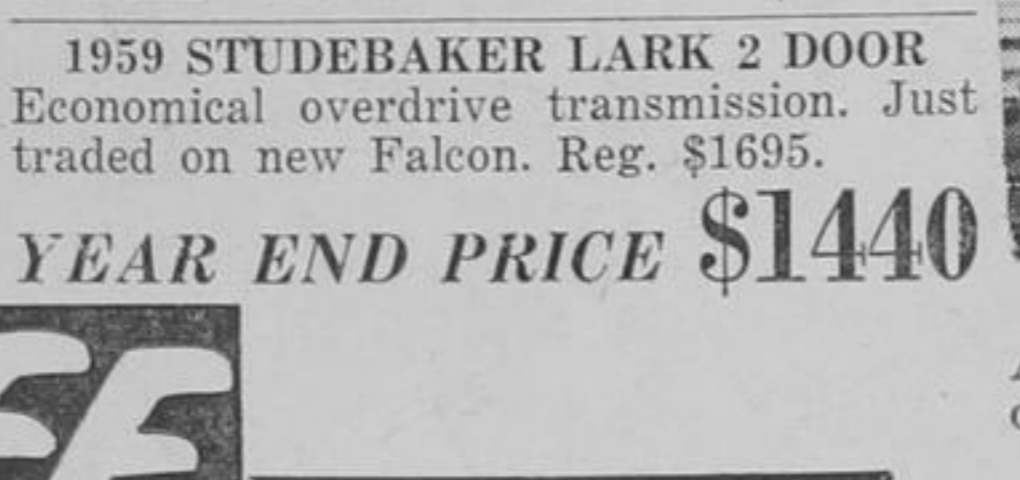
1955 FORD RANCH WAGON Just traded in on new Ford Wagon. Yellow with brown trim. Reg. \$950.

**YEAR END PRICE \$680**



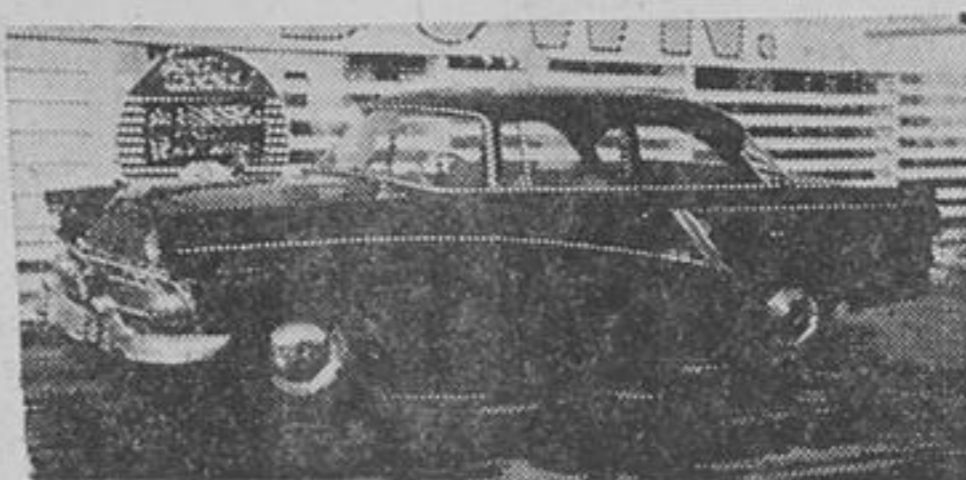
1955 PONTIAC SEDAN Deluxe model in dark grey metallic. Reg. \$845.

**YEAR END PRICE \$429**



1959 STUDEBAKER LARK 2 DOOR Economical overdrive transmission. Just traded on new Falcon. Reg. \$1695.

**YEAR END PRICE \$1440**



1955 METEOR CUSTOM COACH Automatic and radio. Jet black with lots of chrome. Reg. \$895.

**YEAR END PRICE \$599**

**FREE 30 DAY EXCHANGE**

on all cars over \$500.

**FREE 1961 LICENCE PLATES**

**R. D. LITTLE & SON LTD.**  
**AV. 5-1105 Richmond Hill PA. 7-5001**  
**FORD - MONARCH - FALCON - FORD BRITISH**