



HOLIDAY CHECK-UP SAFETY-SPECIAL

Don't postpone **SAFETY** open a CTC "CAN CHARGE" — the quick, easy way to shop without cash.

REAR SPRINGS
\$9.95 to \$14.00 each
Installed \$4.50 each

YOU GET ALL 3 FOR ONLY

Stop quickly and safely BRAKES

- Here's what we do —
1. Check brake drums and lining
 2. Check, clean and pack front wheel bearings
 3. Inspect grease seals

Get longer tire mileage Balance Wheels

- Here's what we do —
1. Precision dynamic balance
 2. Precision static balance
 3. Install necessary weights

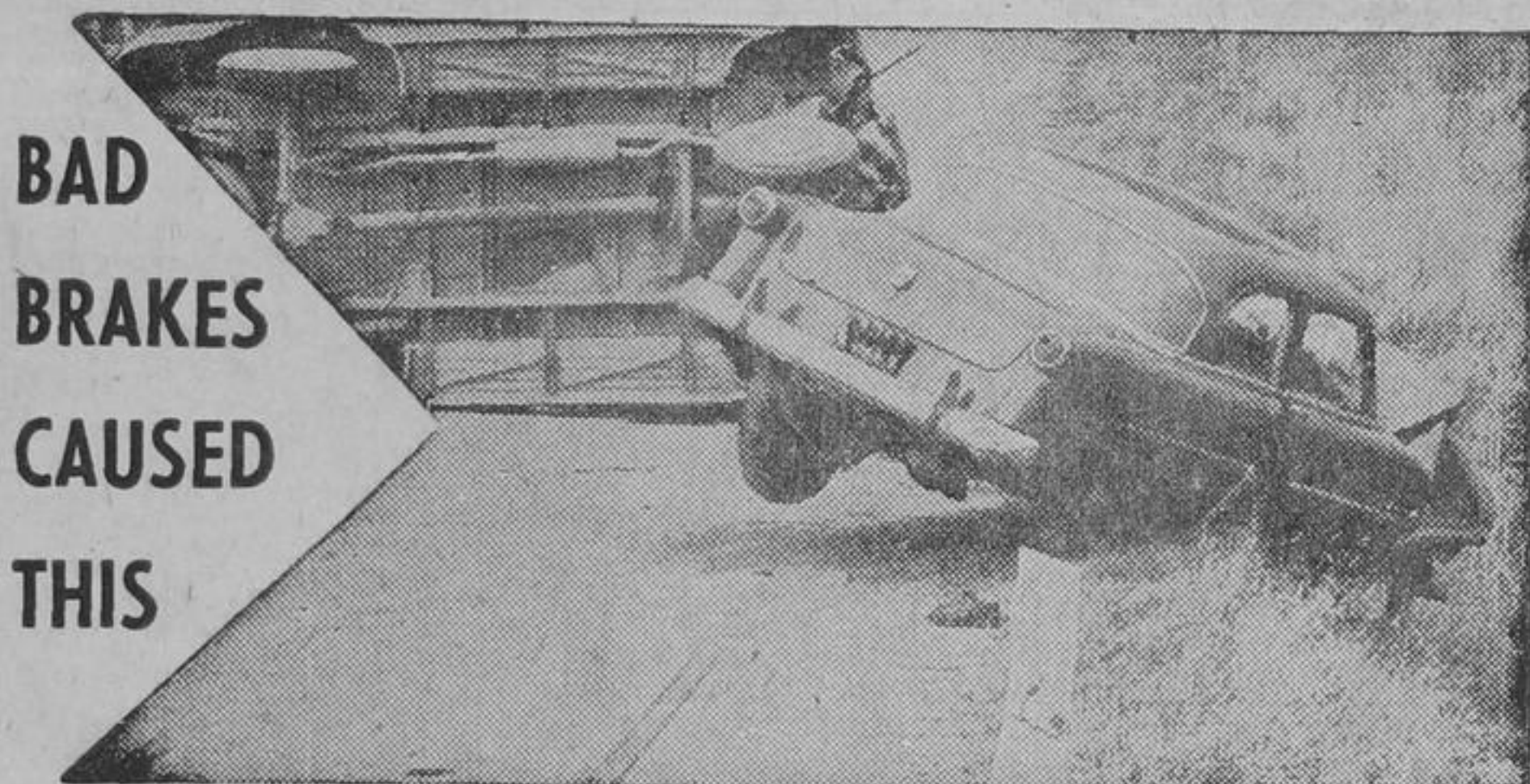
Enjoy easier steering ALIGNMENT

- Here's what we do —
1. Correct caster
 2. Correct camber
 3. Correct toe-in — toe-out — the chief cause of tire wear
 4. Inspect steering

\$ 8.88

FRONT END PARTS

COIL SPRINGS		TIE ROD ENDS	
Chevrolet, 1955-57 Pair	10.10	Chevrolet, 1949-57 (most) Pair	3.50
Dodge, Ford, Meteor and Plymouth (most to '56) Pair	11.50 to 13.96	Dodge and Plymouth, 1946-56 Pair	4.85
		Ford and Meteor, 1942-58 (most) Pair	3.30
KING BOLT SETS		BALL JOINTS	
Includes everything that is needed for both wheels.		Reduces front wheel sway, improves steering.	
Ford and Meteor, 1947-54, Set	5.60	Chev., Pontiac, 1955-59, Upper	5.35
Chevrolet, 1942-54, Set	4.25	Lower	6.20 to 7.50
Dodge and Plymouth, 1946-56, Set	5.20	Ford and Meteor, 1955-58, Upper	9.35 to 11.45
		Lower	11.60 to 13.20



BAD BRAKES CAUSED THIS

DON'T RISK A LIFE WHEN IT COSTS SO LITTLE TO BE SAFE
Are your brakes in good order?

COMPARE YOUR SAVINGS car, year and model	"DO-IT-YOURSELF" SALE PRICE Exchange Front and Back	C.T.C. INSTALLED PRICE Front and Back
BUICK - OLDSMOBILE		
1952-55	7.40	17.40
1956-59	7.90	17.90
CHEVROLET - PONTIAC 20, 22		
1948-50	7.40	17.40
1951-59	7.25	17.25
DODGE - PLYMOUTH		
1946-56	7.25	19.25
1957-59	7.10	19.10
FORD - METEOR		
1949-54	7.15	17.15
1955-59	7.25	17.25
MERCURY - MONARCH		
1949-54	7.25	17.25
1955-56	7.65	17.65
1957-59	7.90	17.90
OLDSMOBILE 88, 98		
1949-59	7.65	17.65

More ...
Stopping Power Safety Confidence
By Installing
CTC MASTER POWER BRAKE UNIT
\$29.95
INSTALLED

Most Cars 1955 and Up
Come In For A FREE Demonstration



CANADIAN TIRE
ASSOCIATE STORE

25 YONGE ST. N., RICHMOND HILL
TUrner 4-1196 - AV. 5-4501

Canadian Tire Holiday Values...

SUPER-LASTIC Factory-Fresh

TYREX

SIZE	Mr's. Regular List Price	Wholesale Discount Price*
550/15	20.00	12.95
600/16	15.45	9.95
640/15	21.25	12.45
650/16	25.15	11.95
670/15	15.45	9.95
710/15	17.95	11.95
750/14	21.60	10.95

Road Hazard Insured—plus 5-Year Guarantee

\$1 A WEEK

9.95
670-15
or 600-16
With Class "A" Trade-In

*With Class "A" trade-in TUBELESS and WHITEWALLS available in many sizes. Tubeless \$2 extra. Whitewalls \$3 extra.
NOTE—Add 50c to tire prices for installation.

Tough, dependable TYREX cord—the quiet-running, miracle fibre specified by new car manufacturers for 1960 original equipment.

*Certification mark of Tyrex Inc., for Viscose Tire yarn and cord.

ROAD HAZARD INSURED

A SUPER-LASTIC EXTRA—Super-Lastic Passenger Tires are Road Hazard Insured against blow-outs, accidents, glass cuts, stone cuts or other normal hazards which make a tire unfit for further service. Customer pays only for service rendered.

—plus 5-Year GUARANTEE

You've never seen
NYLON
PRICED SO LOW

Save Safely — on
SUPER-LASTIC

- Cool-running
- Safety tested

New-car buyers willingly pay a premium for Nylon Tires as optional original equipment. Canadian Tire features Nylon at deep-cut wholesale discounts. Speedway proved Nylon shrugs off impact damage; ends cord-rot blowout hazard; eliminates dangerous high-speed heat build-up hazards. Smartly styled engineered tread design in latest, improved jet cold rubber.

Road Hazard INSURED plus 5-Year GUARANTEE

DISCOUNT PRICE*	
11.95	670/15 750/14
12.95	710/15 800/14
13.95	760/15 850/14

*With Class "A" trade-in TUBELESS — only \$2 extra WHITEWALLS — \$3 extra NOTE—Add 50c to tire prices for installation

SUPER-LASTIC DeLuxe DUPONT NYLON ... with SARCA NATURAL RUBBER

*Super Abrasion-Resistant Carbon Alloys

Save \$12.40
16.95
with Class "A" Trade-In Reg. List \$29.35
670/15 - 750/14

- EXTRA Traction
- EXTRA Soft Ride
- EXTRA Safe Miles
- EXTRA Blowout Protection

DISCOUNT PRICE*

Size	Mr's. Regular List Price	Wholesale Discount Price*
670/15	29.35	16.95
710/15	33.45	17.95
760/15	36.55	19.95
800/15	39.20	23.95
750/14	29.35	16.95
800/14	33.45	17.95
850/14	36.55	19.95

*With Class "A" trade-in TUBELESS — only \$2 extra WHITEWALLS — \$3 extra Note—Add 50c to tire prices for installation.
Road Hazard INSURED plus 5-Year GUARANTEE

—The Safest
Tire on Earth

CANADIAN TIRE ASSOCIATE STORE
TU. 4-1196 - 25 Yonge St. N. Richmond Hill - AV. 5-4501