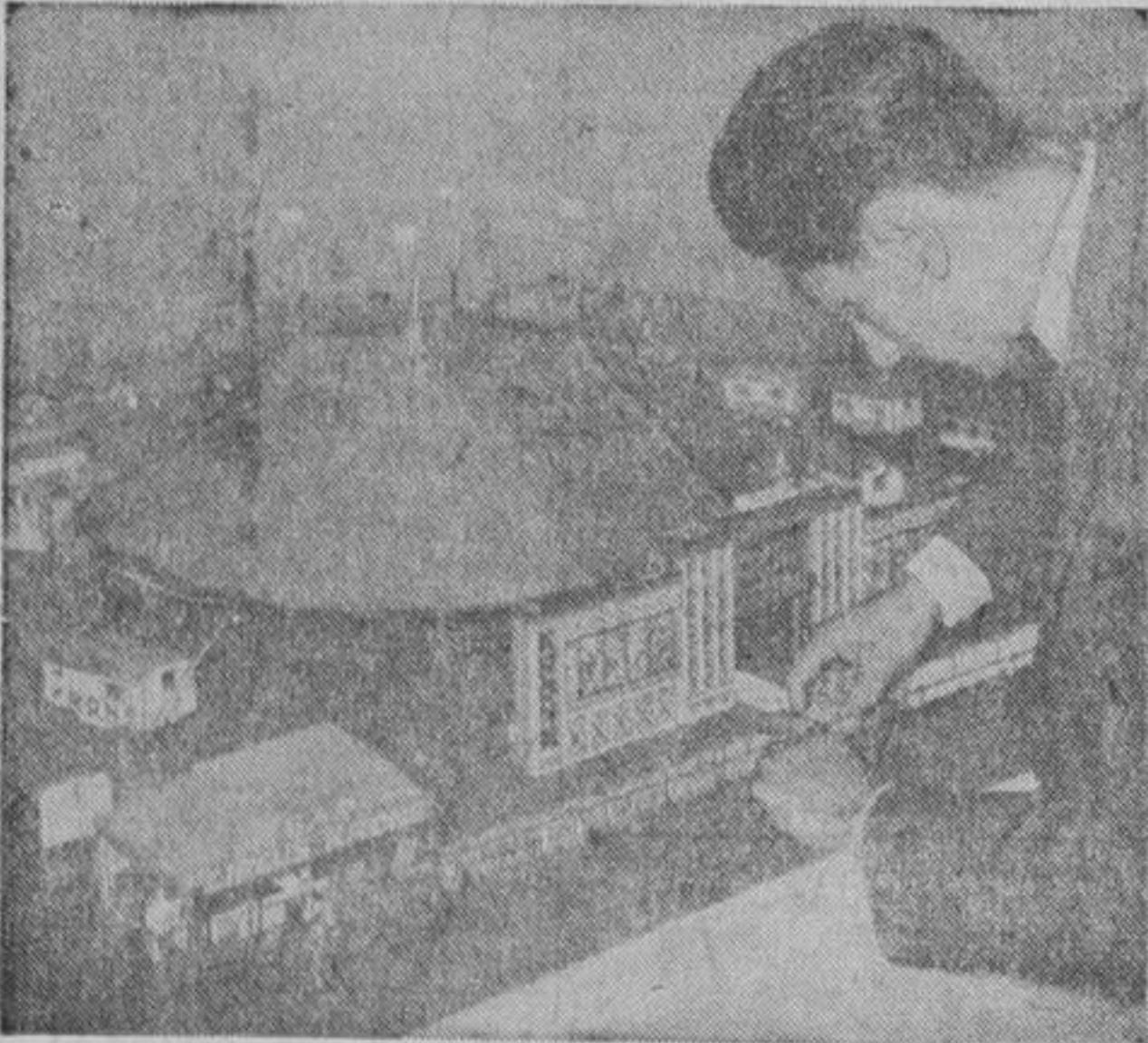


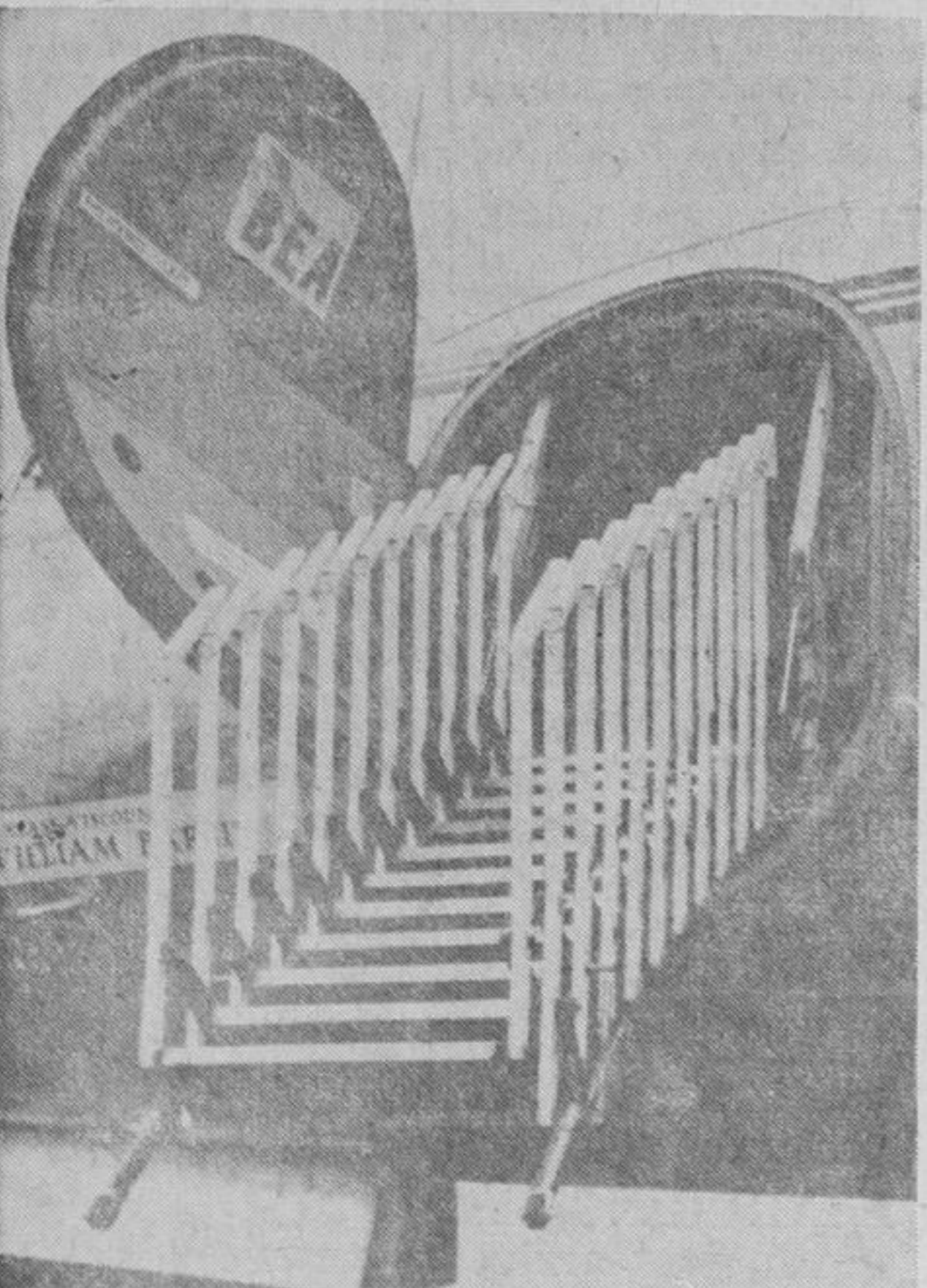
News of the World in Pictures



FIT FOR A SHAH—Plaster crowns get a paint job from 68-year-old Edwin Mason in London in preparation for the state visit of Shah Mohammed Riza Pahlevi of Iran.



TENTS SITUATION—Gerhard Diegel carefully puts final touches on his exact scale replica of the Circus Krone in Esslingen, Germany. The model (top) is 1/60th size of real one (bottom).



SLIDING STAIRWAY—These hydraulically-operated stairs have been fitted to a British Viscount in place of the usual ramp at the London airport. When plane's ready to take off, steps fold in.

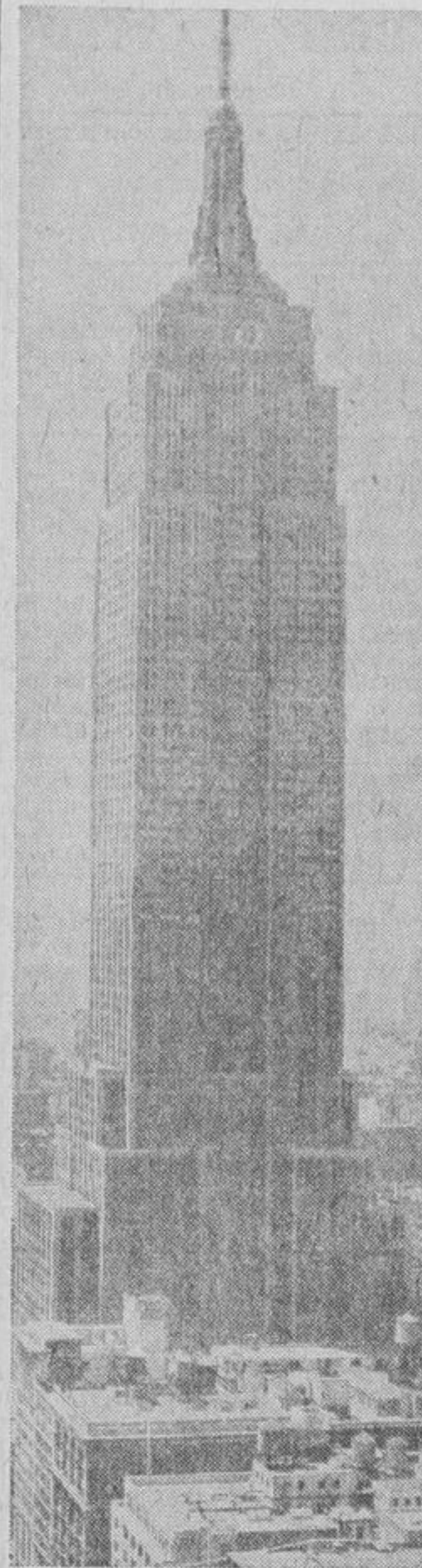


SOME DIRECTION NEEDED—Actress Audrey Hepburn should be directing director John Huston when it comes to his golfing. They're on location in Durango, Mexico.

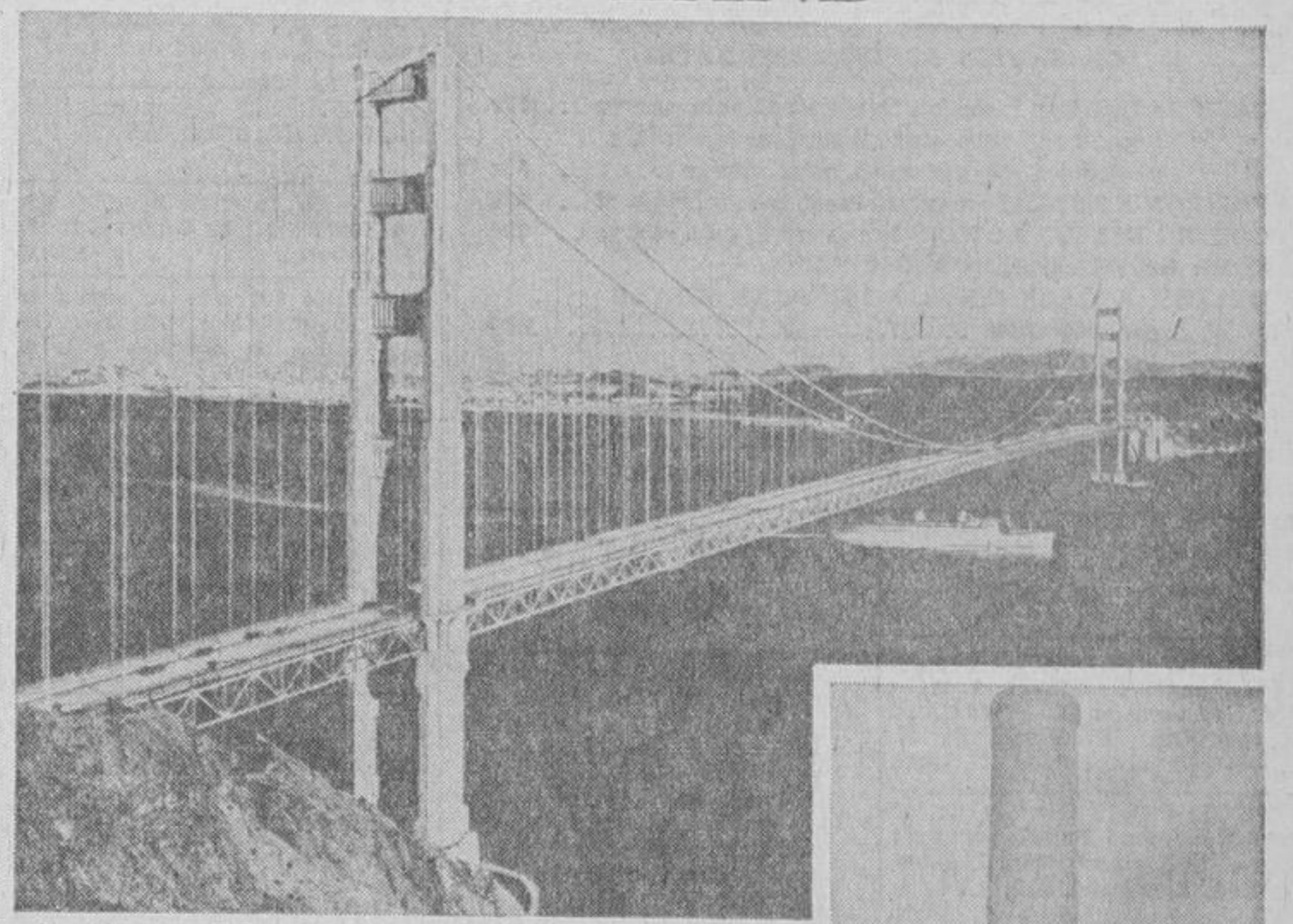


CAN'T DAMPEN HER ENTHUSIASM—Marie Goodheart finds the ocean waves just to her liking as she splashes away in 80-degree temperatures in Florida's Miami Beach.
Distributed by King Features Syndicate.

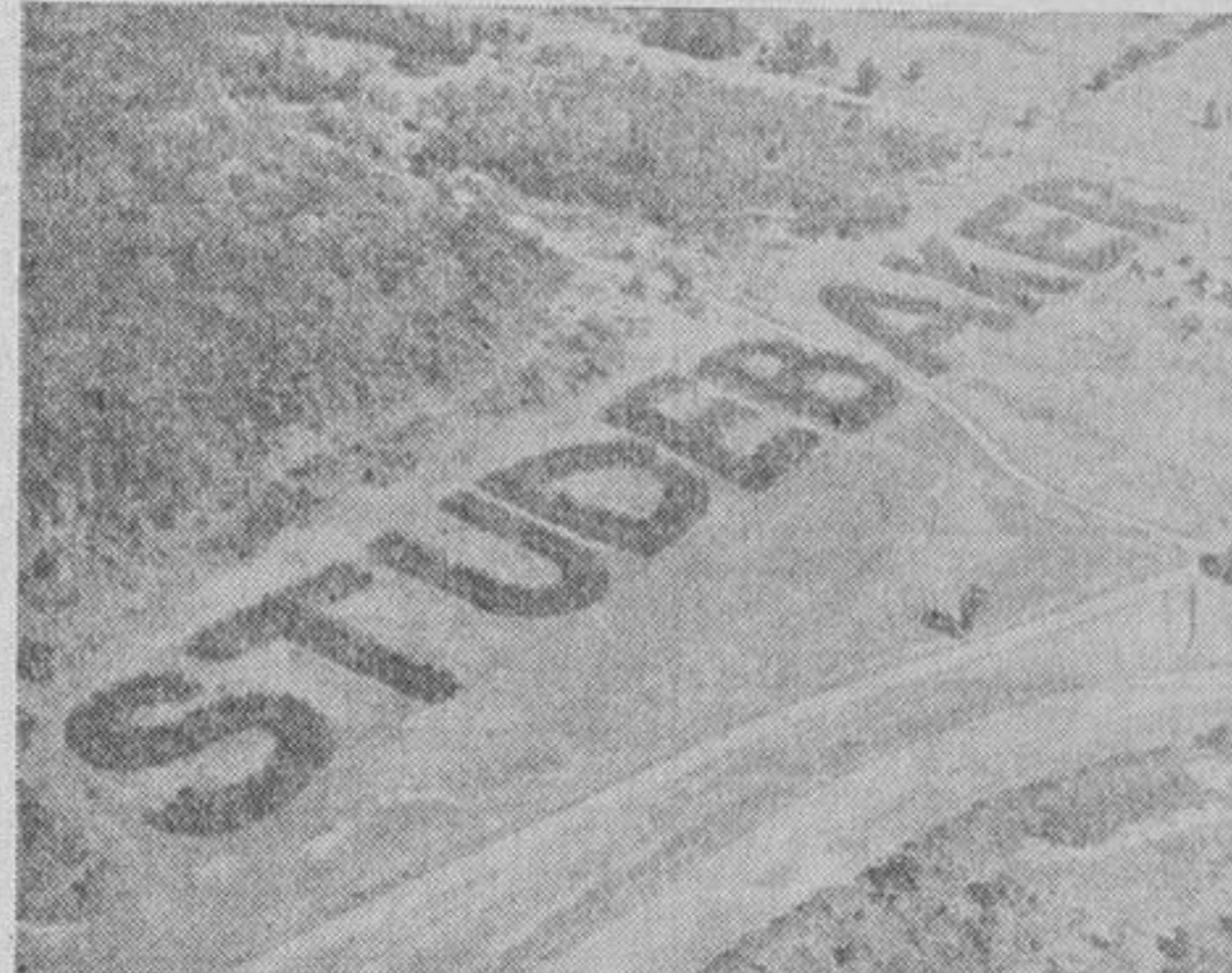
SUPERLATIVE LAND



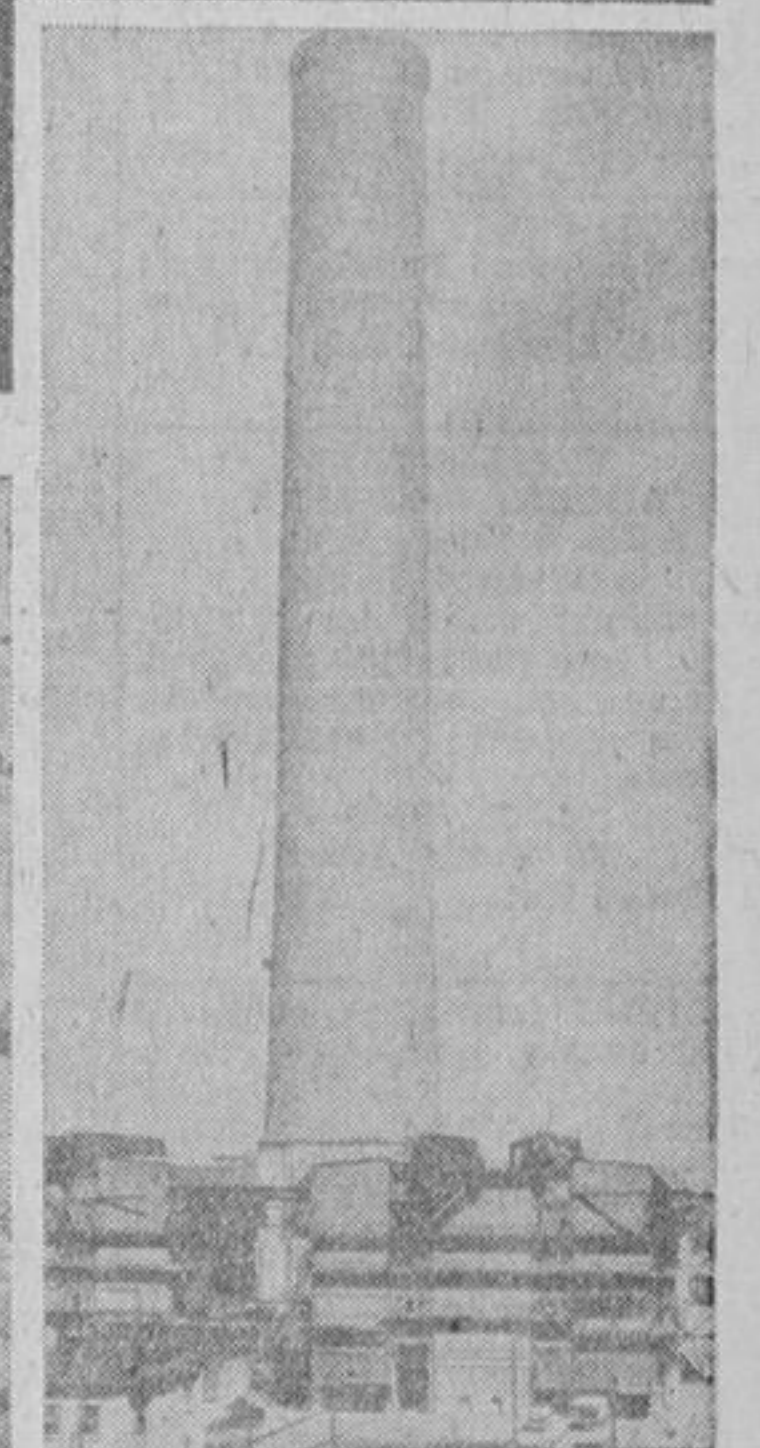
New York's Empire State.



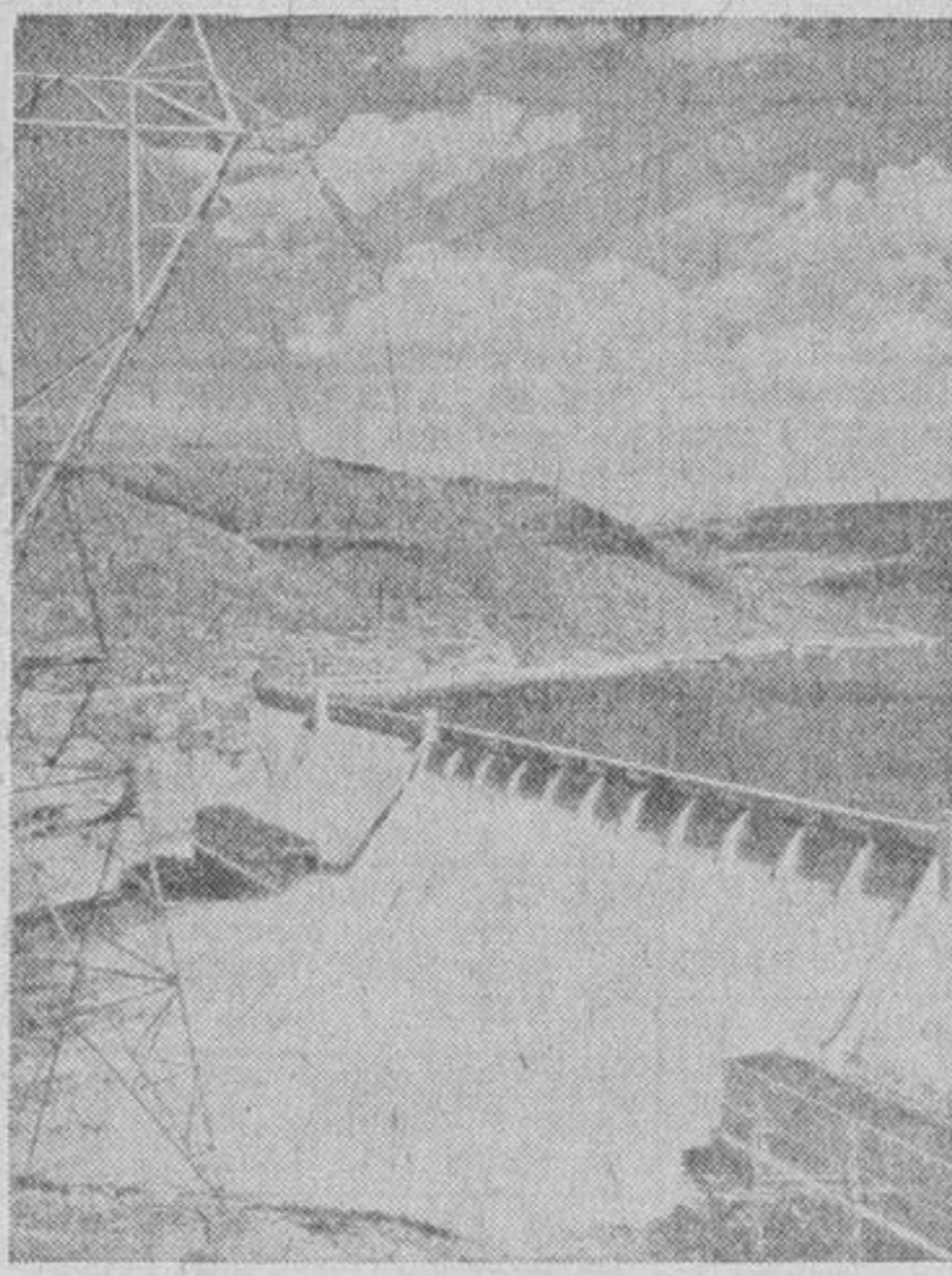
Familiar to all San Franciscans is Golden Gate bridge.



Each letter in huge pine tree sign is 200 feet long.

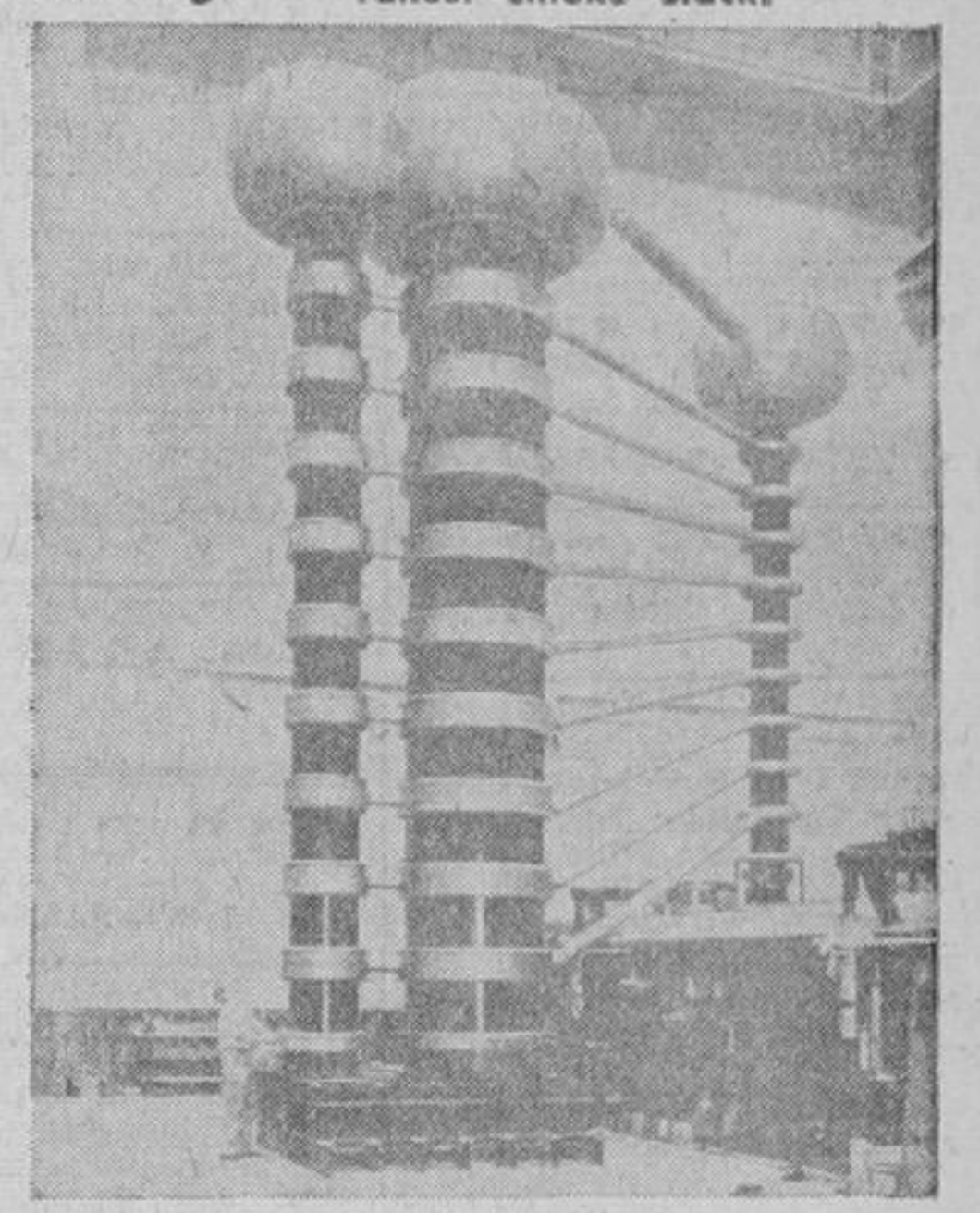


Tallest smoke stack.

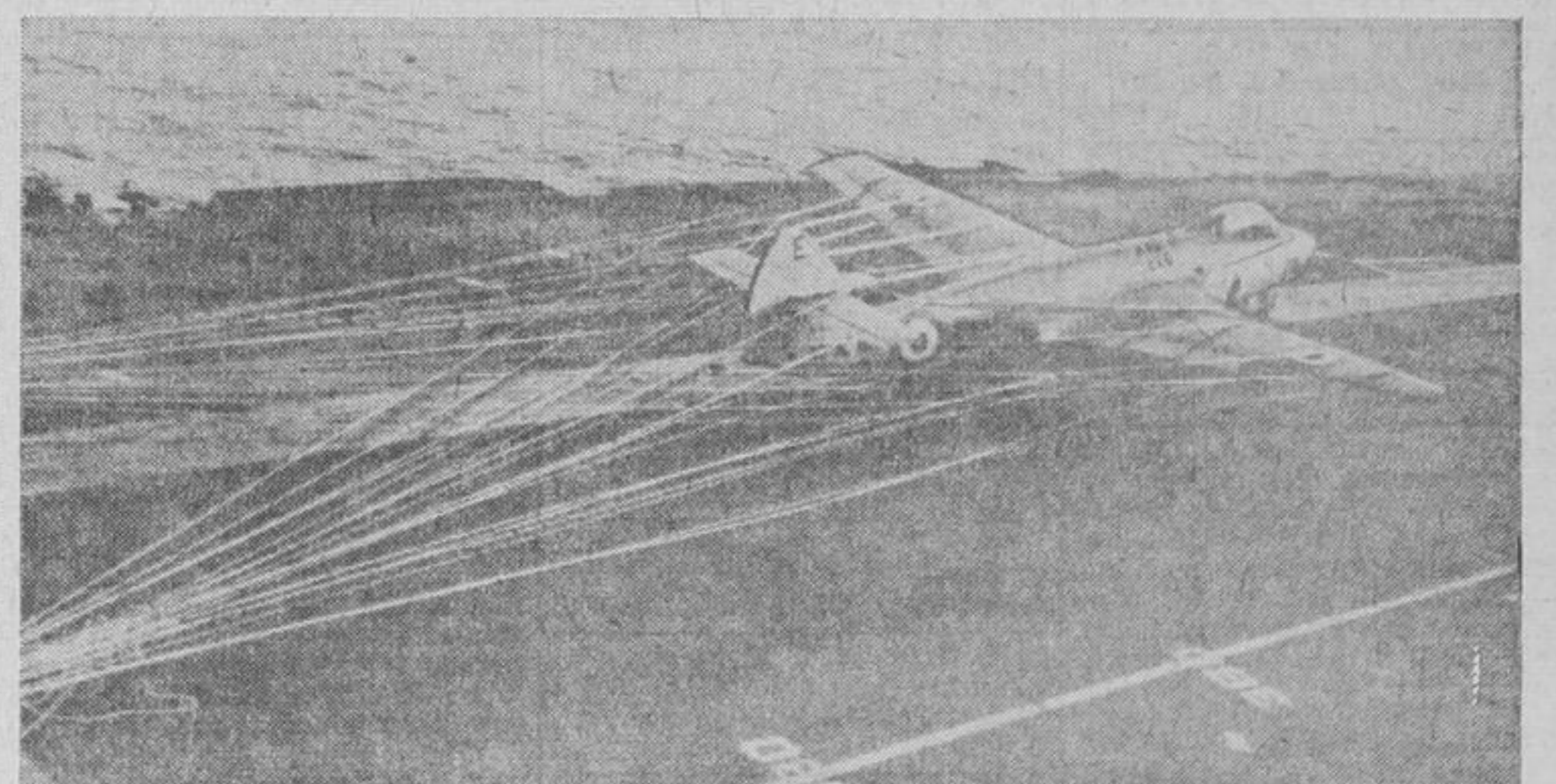


Lots of concrete in Grand Coulee dam.

AMERICANS like to boast about the "biggest" and "best" their country has to offer, whether it's sports, missiles, pretty girls or some other category. Here are some of America's unequalled splendors. New York's Empire State building is world's tallest and San Francisco's Golden Gate bridge is longest single span. Largest sign—8,200 pine trees extending more than half a mile—can be found near South Bend, Ind., while biggest smoke stack—585 feet tall—is in Anaconda, Mont. Grand Coulee dam is nation's largest concrete dam and that high-voltage X-ray installation in Washington, D. C., is the largest machine of its kind.



High-voltage installation is tops.



CAUGHT IN A WEB OF SAFETY—The "spider's web," a nylon elastic barrier, catches a British Seahawk fighter on a British flattop in the Mediterranean. Barrier, which is erected in two minutes, is used as an emergency safety device.



BABY CARRIAGE TRADE—When Queen Elizabeth visited the town of Stevenage, England, so many mothers showed up with their youngsters to see her that a "pram park" was set up to accommodate all the baby carriages in the area.