

DON'T BE A JACKASS-YOU'LL LOVE IT!



The Liberal.

"In Essentials Unity; in Non-Essentials Liberty; in all things Charity."

THE LIBERAL

Your Home Paper
Delivered by Carrier in
Richmond Hill
EVERY THURSDAY AFTERNOON
10c PER WEEK
BY MAIL \$3.50 PER YEAR

VOLUME LXXX, NUMBER 40

RICHMOND HILL, ONTARIO, THURSDAY, APRIL 2, 1959

HOME PAPER OF THE DISTRICT SINCE 1878

SINGLE COPY 10c

Coming Events

EVERY TUESDAY, Bingo 8 p.m. at the Legion Hall, King Side Road, Oak Ridges. Cash prizes and jackpot. tfc31

BINGO every Thursday, 8 p.m. in Orange Hall, 1st house north of Loblaws. tfc27

EVERY FRIDAY night — at 7.45 p.m. Bingo — Community Hall, Spruce Ave. Stop 22A, Yonge St. tfc36

EVERY SATURDAY NIGHT — 9.00 p.m. - 12.00. Dancing to Max Cameron's Orchestra, at Canadian Legion Hall, Carville Road, Richvale. Sponsored by Richmond Hill Branch 375, Canadian Legion. 75c per person. tfc36

APRIL 4 — Saturday Euchre Members of L.O.L. and L.O.B.A. will hold a euchre at the Orange Hall, 1st house north of Loblaws on Yonge St. at 8 p.m. sharp. Admission 50c. Lucky door prizes; draw prizes and good euchre prizes. Lunch. tfc33

APRIL 4 — Saturday 1-4 p.m. Rummage sale and baking sale held in the Community Hall, Spruce Ave., Richvale. Held under the auspices of the Vaughan Women Workers. c2w39

APRIL 4 — Saturday. Rummage sale sponsored by the Young People of Richmond Hill Presbyterian Church at one o'clock. For rummage collection, please phone TU. 4-3583, TU. 4-3402 on or before Friday, April 3. *1w40

APRIL 6 — Monday 8 p.m. The Women's Association of the Richmond Hill Presbyterian Church will hold its regular meeting at 8 p.m. Everyone asked to attend as final plans will be made for the spring luncheon on April 22. c1w40

APRIL 7 — Tuesday 4.30 p.m. at MacKillop School, the Kindergarten teachers are beginning another series of six lectures. Lecturer, Mrs. Rihmora Cornell B.A. Anyone interested welcome. Fee \$1.00 a lecture. c1w40

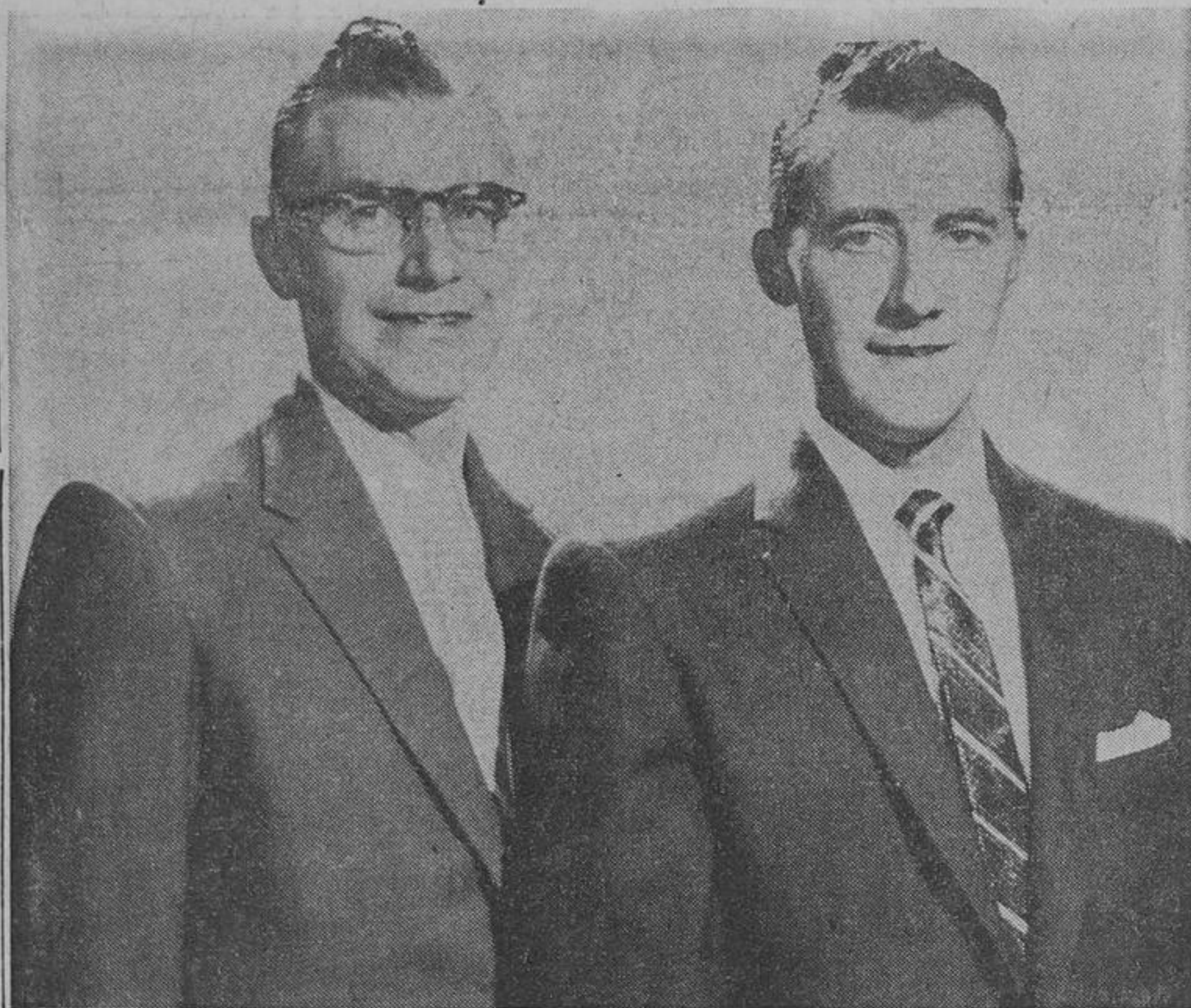
APRIL 7 — Tuesday at 8.15 p.m. Concert by the famous Accordion Orchestra, including the Canadian Champion, Ernest Manfredi, under direction of Professor E. Borgstrom will give a concert at Bloor Collegiate Auditorium, Bloor & Dufferin, 1141 Bloor St. W. The concert is sponsored by the Danish Lutheran Church in Toronto to the benefit of the Building Fund. Tickets \$1.25, Children 50c. For further information call TU. 4-1215 *2w39

APRIL 8 — Euchre in the Victoria Square community Hall at 8:15 p.m. It is being sponsored by the Victoria Square Park Committee. Ladies please provide lunch. Come and give your support. c1w40

APRIL 8 — Wednesday. The St. Cecilia Choral Group of Richmond Hill will stage a repeat performance of their highly successful Concert and Variety Show, in the High School Auditorium, 51 Wright Street. Tickets available from chorus members and at the door for 50 cents. Advance reservations can be made by phoning PR. 3-5829, TU. 4-3493 or TU. 4-4007. You are guaranteed three hours of thorough enjoyment. c1w40

APRIL 9 — Thursday, 8.00 p.m. sharp. A gala bingo and bridge party at Walter Scott School is planned by the Allencourt Ratepayers' Association. Prizes and lucky draw, bridge facilities for those who wish to play. Refreshments afterwards. Come — bring your friends — and enjoy a real sociable evening. Everyone welcome. c2w40

Morley's Foodland Opens April 9th



FATHER & SON business expands. Shown above are Morley B. Hall and Warren Hall, proprietors of the new MORLEY'S FOODLAND which will open for business next Thursday, April 9, at 10 a.m. Morley Hall has been in business here since 1942 and his son Warren has been associated with him in business for the past twelve years. — Photo by Lagerquist

Keeping pace with the growth and development of Richmond Hill, MORLEY'S FOODLAND will open next Thursday, April 9, in the new modern quarters on Yonge Street, just south of its present location. A popular shopping centre for town and district, Morley's was established in its present location in May, 1942, and for many years previous was known as the Skeele Grocery. Mr. Morley Hall came to Richmond Hill in 1930 and has been an almost continuous resident ever since. In May, 1942, he took over the old established Skeele business and founded the popular self-service store known as MORLEY'S which has through the years enjoyed generous patronage. For the past twelve years his son, Warren Hall, has been associated with the business and the father and son combination is now launching an ambitious expansion program taking over the spacious Mortson Building, next door south of the old stand. The new store will be modern in every respect and will include a meat section specializing in a full line of fresh and cooked meats. There will be both self-serve and personalized service in the meat department which will be under the direction of Ray Stunden who will be assisted by Ted Mansbridge and Ross White. Mr. Mansbridge after many years in business sold his Yonge Street store to the F. W. Woolworth Co. and Mr. Stunden and Mr. White were members of his staff. The new Foodland will give the owners accommodation to carry a greatly enlarged stock.

Selling space in the new store will be more than 3,200 square feet and equipment will include the most modern in every department. A greatly enlarged frozen food section will cater to the wants of the people of the district. There will be other additions to the staff in addition to those already mentioned and Beulah Baskerville and Dorothy Loeffen, long time employees at Morley's. The opening of Foodland next Thursday marks an important milestone in the business life of the community and will be marked by many special features. There will be favors and lucky prizes and many attractive special opening bargains.

Town School Bd. To Hire Own Inspector

Following a recommendation of the Department of Education the Richmond Hill Public School Board has decided to engage its own inspector. In the past the province handled all the inspection services associated with the local public school system. Chairman L. Clement stated that the board believes "this move to be in the best interests of our educational system". The new appointment will be effective next September 1st. Mr. Clement reported that Supervising Principal D. Rose will take over the principalship of the new school planned for Pleasantville.

The new FOODLAND will offer Richmond Hill and district citizens the latest in shopping convenience, and a continuance of the policy of quality merchandise and courteous pleasing service which has through the years contributed to the continued success of this independent food market. The Hall's, father and son, are highly esteemed local citizens who through the years have been active supporters of all worthwhile community undertakings. Mrs. Kay Hall as been an active partner with her husband from the beginning of the business and we include her in our congratulations on this occasion. Everyone is invited to visit the new Foodland when it opens next Thursday, and we join with the people of the community in extending best wishes for success in the years to come.

Ample parking space is available at the rear of the new store for the convenience of customers.

ACCIDENT RECORD RICHMOND HILL 1959	
FATALITIES	0
ACCIDENTS	33
INJURIES	3

Markham Twp. Deputy Leads Fight Against Route Of C.N.R. By-Pass Council To Meet Ratepayers Mon.

Deputy-reeve W. Dean took a firm stand Tuesday against the proposed new route of the C.N.R. At the weekly meeting of Markham Township Council Deputy-reeve Dean failed to gain any support when he attempted to have council request the railway to seek an alternative route. "I think it's the duty of council and planning board to support our ratepayers in forcing the railway to seek another route", maintained Mr. Dean.

"In that case the railway will never be built", answered Reeve W. L. Clark. "We are not qualified to say what is the best route. Any location would interfere with some property owners", added the reeve.

Deputy-reeve Dean met strong opposition from Councillors L. Mumberson and S. Watson who were in full support of the railway. Councillor J. MacNeil, the other representative from the Thornhill area was absent from the meeting. Reeve Clark who was more willing to compromise than either Councillors Mumberson or Watson, agreed council could ask the railway to consider an alternative route if one was available.

"The proposed line is going through some very valuable land, it's up to this council to take a stand," maintained Deputy-reeve Dean. The speaker felt the large turnout at last week's meeting held at Thornhill High School was indicative of the general opposition to the line. "There was only small opposition at that meeting," retorted Councillor Watson. "Only a quarter of the people there were actually opposed to the railway," stated Mr. Watson. "The people were opposed to Metro and not the railway," said Councillor Mumberson.

During the course of Tuesday's meeting Reeve Clark announced that council will meet with representatives of the ratepayers opposed at a special meeting of council to be held next Monday, April 6, in the council chambers. Councillor Watson suggested that the ratepayers be required to present a proper brief. "There will be no confusion," replied Reeve Clark. "We'll conduct the meeting in an orderly fashion."

Trustee H. Sanderson was of the opinion the advantages of the addition to McConaghy outweighed the disadvantages of placing it in this location. Public School Inspector W. J. McLeod felt there were certain disadvantages of adding to the older school. "Listen to the traffic," he exclaimed. However, he stated it was entirely up to the board to decide where they wanted to build, then submit the plans to the Department of Education.

Discuss Salary School Trustees

The question of payment to those elected to serve on school boards which has received some publicity lately came up at the local public school board meeting Thursday of last week. When Board Secretary Mrs. Dorothy Street asked if there were any questions the members would like to submit to the Rural and Urban Trustees' Convention in Port Credit on May 6, Trustee C. Williams asked, "When are they going to start paying trustees?" Trustee Mrs. Margaret Southwell wondered, "when should we start putting in our expense accounts like they do in Metro?" "You can," answered Trustee H. Sanderson.

Do West Side Town First

Local Trustees Plan Pre-School Survey

A survey of pre-school children is expected to be undertaken during April by the Richmond Hill Public School Board to learn the ages and locations of local pre-school children and to ascertain their school accommodation needs during the next few years.

The west end of town is expected to be surveyed first in order to aid the board in deciding whether a 10 or 12 room school is needed on the Pleasantville site.

Also to be decided is whether or not to add three more classrooms to the M. L. McConaghy School. In regard to the latter, the board agreed to allow the Building Committee to investigate getting an architect to plan the addition. Trustee C. Williams asked Inspector McLeod if alterations to McConaghy were grantable. "Not now," said Inspector McLeod. "The policy has been not to give grants on old construction."



The above scene taken from the Curtain Club's Spring production "KIND LADY" shows the confidence man's sick wife being carried upstairs by the doctor. The only trouble is that he is not a doctor, she is not a wife, and neither is she sick. For a solution to this mix-up, see the play at the Lions Hall on April 9th, 10th, or 11th. — Photo by Thomson-Gibson