

News of the World in Pictures



EARLY ENTRANT—One of the first in the 1958 queen-of-this-or-that derby is Ginger Stolz, of Winter Haven, Fla., as she is crowned Queen of the Poinsettias by Marilyn Van Derbur, Miss America.



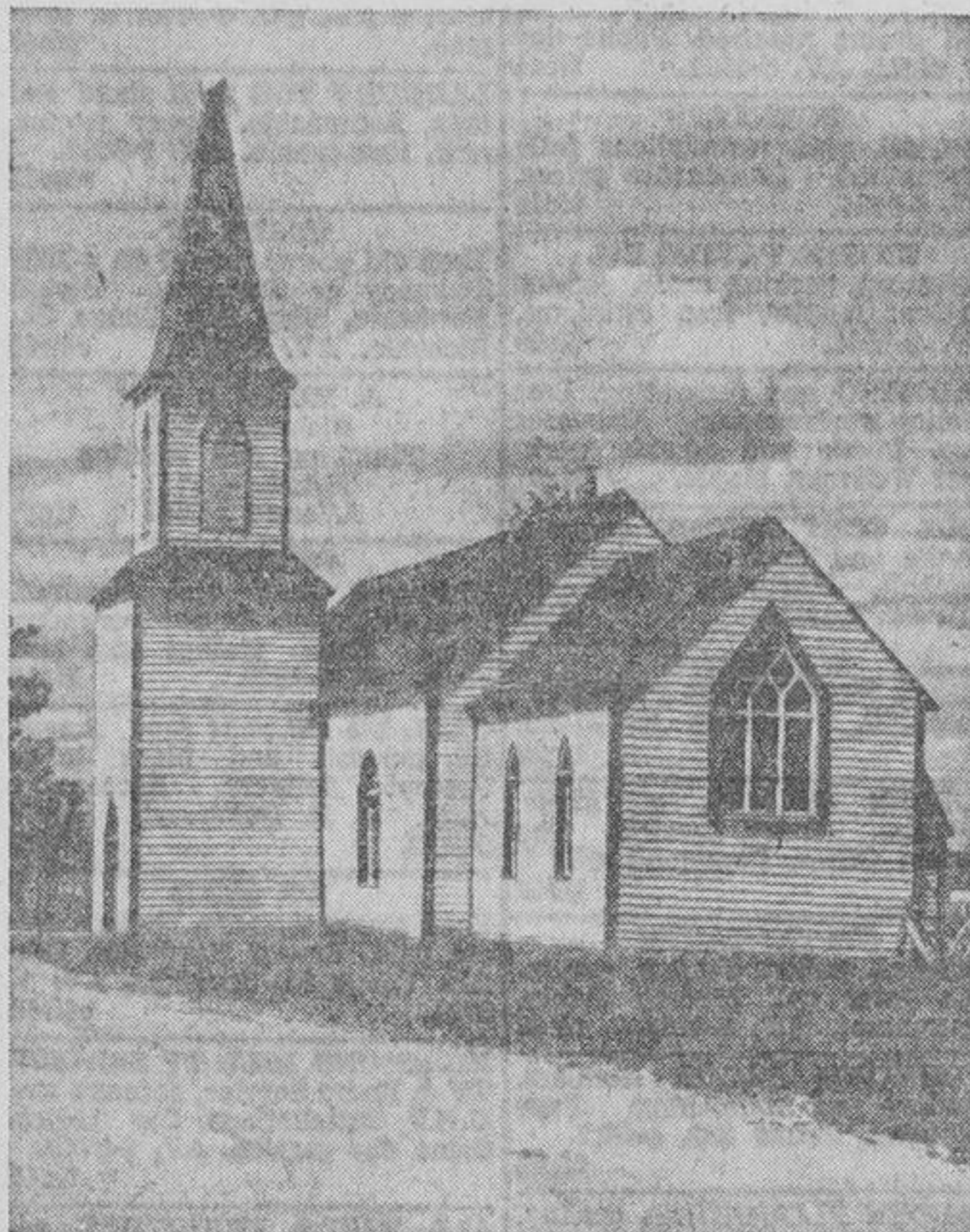
CASTING NETS AT CAPE CANAVERAL—Two fishermen are hauling on one end of a 200-yard net as other fishermen in a rowboat (which is out of sight) work toward shore in Cape Canaveral, Fla. A half-circle is completed when the boat touches shore 500 yards down the beach. Method is used by those who can't afford big boats.



HART IN THE WRONG PLACE?—Little Steven Hart isn't too sure about this skiing business, but he'll give it a whirl at Sun Valley, Id. There's always the chance Steve may become an Olympic champ.



STEPS FOR SCHOLARS—Young Noralma-Vera, complete with stage name, steps out of line for a lesson at London's Royal Ballet school (formerly the Sadler's Wells Ballet school). Noralma-Vera, who comes from Guayaquil, Ecuador, is attending the ballet school on a two-year British-awarded scholarship.



AT THEIR SERVICE—A typical example of the type of church found in some small communities of Canada is St. Thomas' church at Moose Factory, Ont.

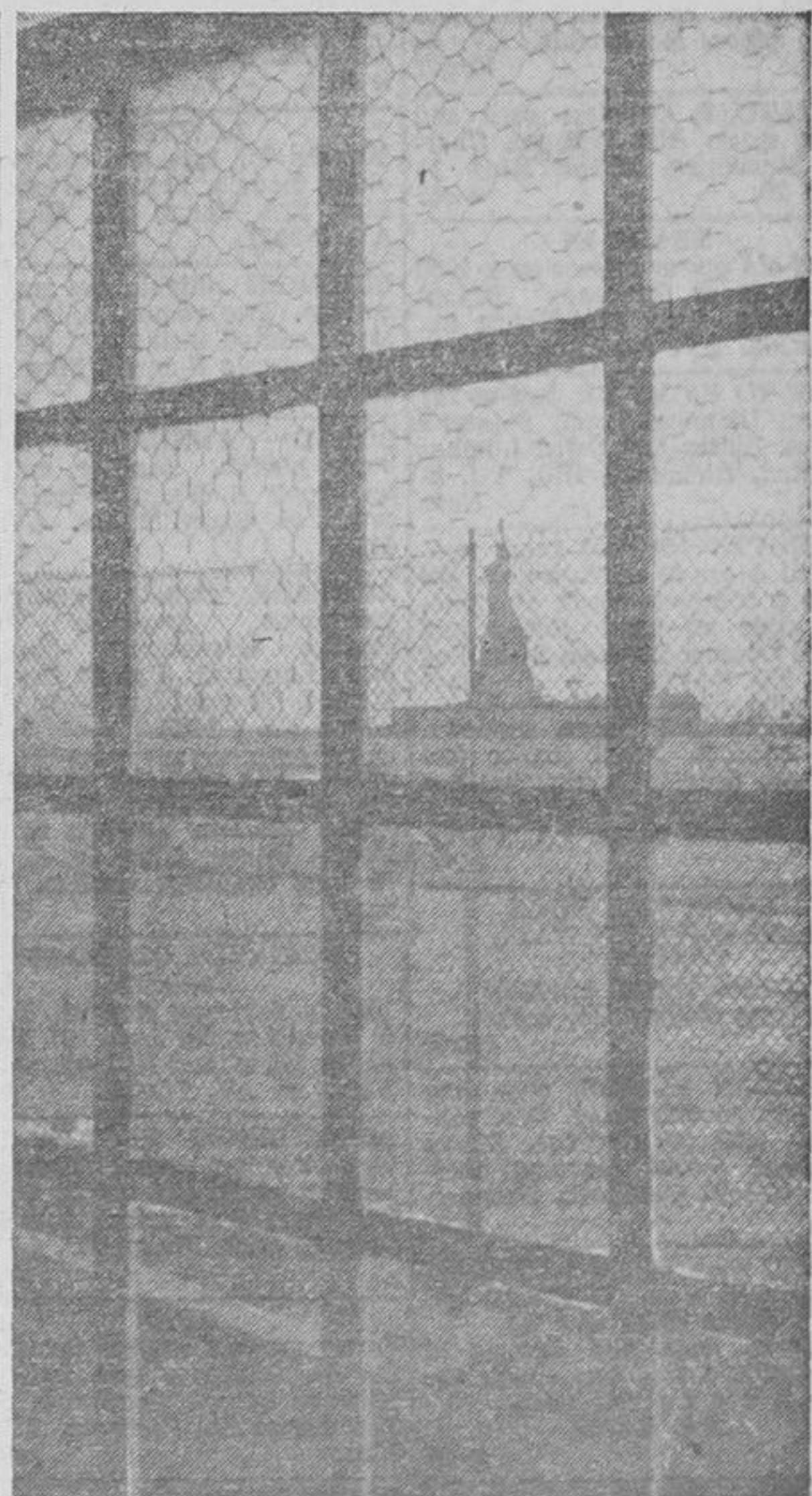
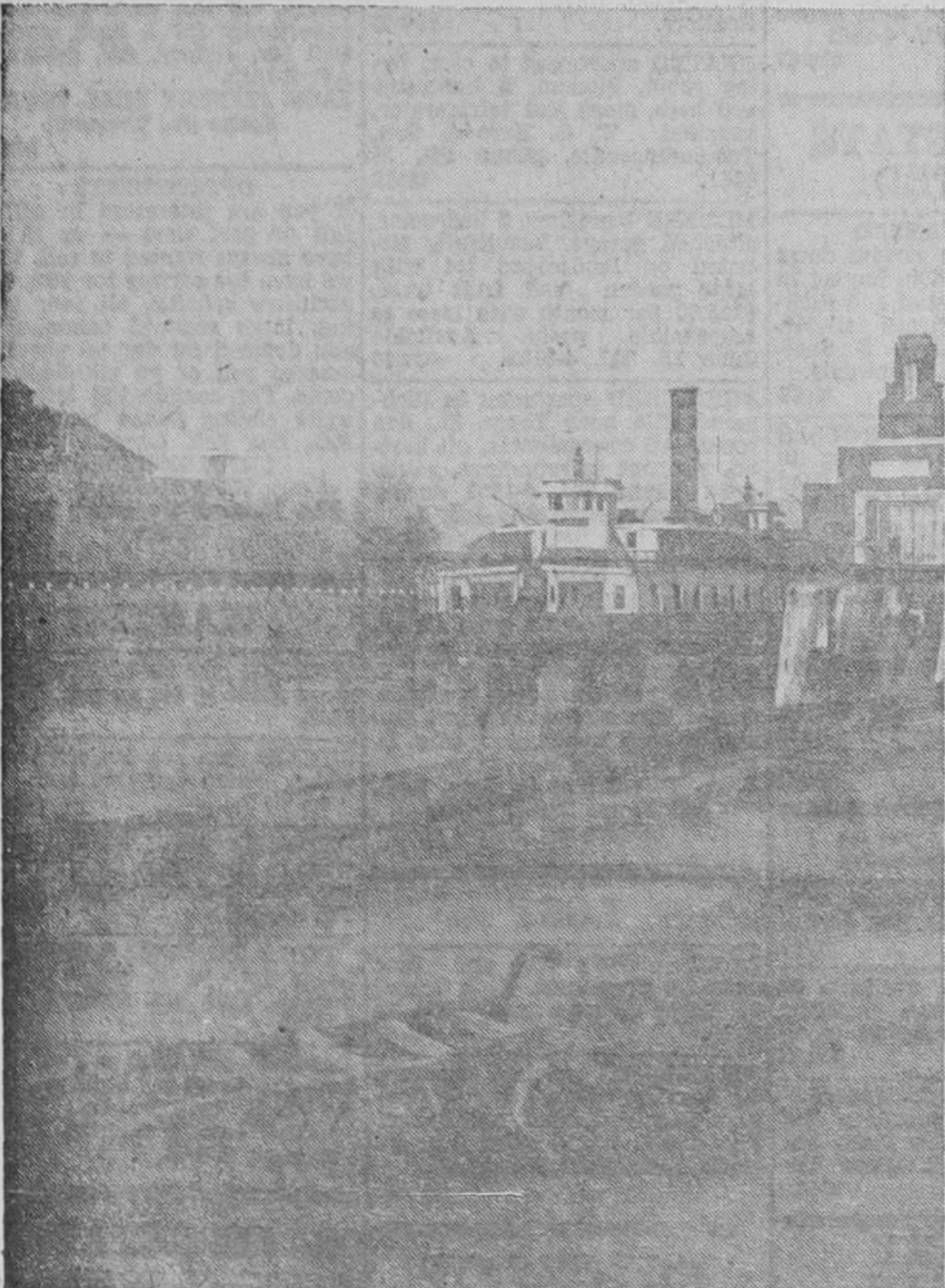


ANOTHER BEAR RUG DOWN—Happy hunter is John Day, who travels the globe for trophies for his ranch in Medford, Ore. He shot this 11-foot Kodiak bear during a hunting trip in Alaska. The Kodiak bear is believed to be a descendant of the Siberian cave bear, which migrated during the ice age.

ELLIS ISLAND

ONCE A SYMBOL of a better life for 15 million immigrants, Ellis Island today is uncertain of its own future. Neglected and deserted, it awaits a decision from the federal government to settle its fate. Photographer S. C. Burden took a back stage visit at Ellis Island and made these striking pictures, part of a photographic essay on exhibit

at the Museum of the City of New York. The photos include a birds-eye view of the ocean that immigrants crossed on their way over, the ferry, Ellis Island, the waiting room that held its share of hope and anxiety and other parts of the way station to a better way of life. Only thing missing from Burden's pictures is the most important—the people.



Ellis Island scenes include the idle ferry boat (left), the shoes cast aside in the waiting room (second from left), the deserted administration buildings (second from right) and the screened-off view of the Statue of Liberty (right).