

CONVULS FOR YOUR . . .

JOB PRINTING REQUIREMENTS
 Fine Workmanship — Reasonable Prices
 "The Liberal" - TU. 4-1105

BIG BUY

Professional Design Hoseline

Auto Wash Brush

PURE NYLON BRISTLES



SET IN FLEXIBLE RUBBER



- Full-thick Flagged Nylon 2" bristles
- Water Control Valve and Shut-off in Handle
- Flexible All-Rubber Head—won't scratch
- Keeps hands and clothes clean and dry
- Natural grip for easy action
- Fits any 1/2" garden hose

Here's a gift that's "tops with Pops" — at a substantial savings. Good-looking "Professional Design" Flagged Nylon Auto Wash Brush. Designed to do a better job, faster . . . neater, too — no slopping water over hands or clothes. Controlled spray forced through jets in the brush head quickly loosens dirt and heats it away. Wash and rinse in one easy operation. Shaped to fit all contours of the car, the soft, flexible rubber protects car finish. It's colourful and handsome, built for natural convenient action with comfortable corrugated hand grip on handle. Simply attach to garden hose.

4.98
 Worth \$7.00

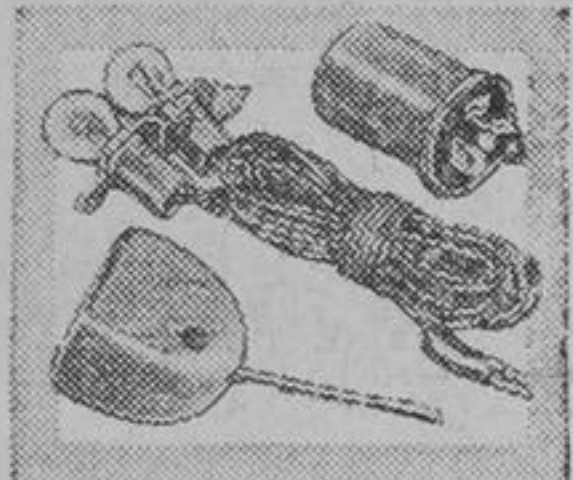
CANADIAN TIRE HAS THE RIGHT ANSWERS



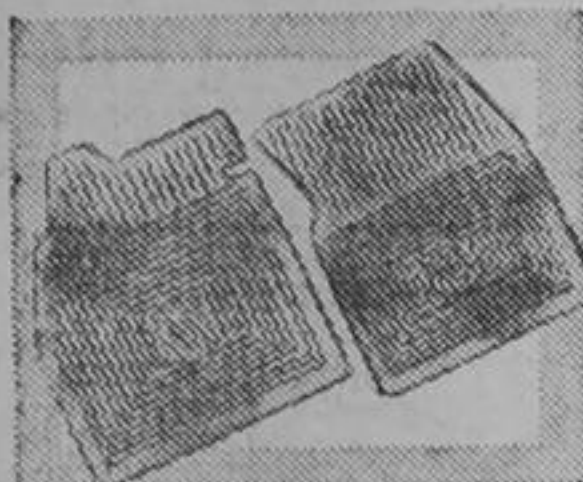
VISORED BODY-MOUNT MIRROR—Superbly designed in the popular hooded style. Luxurious chrome plate. 4 1/4" diam. mirror. **3.98**



19-PIECE SOCKET WRENCH SET—Includes both a complete 1/2" drive and 3/4" drive outfit with popular size sockets and tools. **4.98**



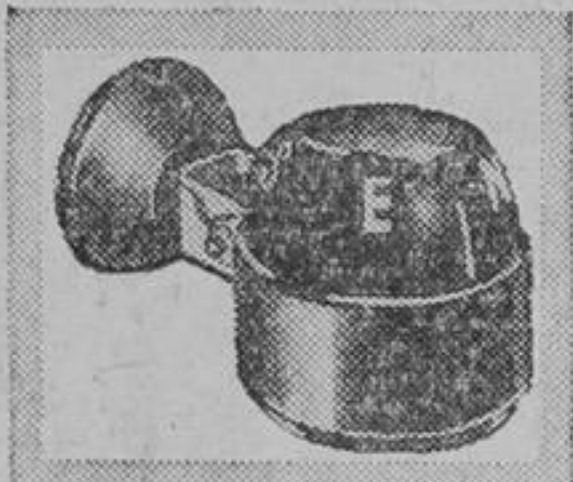
DIRECTIONAL SIGNAL KIT—For all cars 1940-55. Easy to install with a screwdriver. For most popular 6-volt models. **6.45 to 8.79**



TWIN AUTO FLOOR MATS—Designed in pairs to high-style and protect car interiors. Wide range of harmony colours. **2.98**



"DOOR-EDGE" MIRROR—For late model cars; gives full rearview vision. Huge 4 1/2" no-glass mirror. Chromed. **2.75**



"AIR-WAY" COMPASS—For auto, boat or plane. Accurate, easy to read. Neat bakelite case. Suction cup mount. **2.29**



EXHAUST EXTENSION—Popular long straight tube type. High-lustre triple chrome finish. For most popular cars. **1.19**



CURB SIGNALS—Save fenders and whitewall tires. Protect wheel alignment. Highly chromed pair. **1.29**
 Others .65 to 2.19 pair



DASH FENCE—Red, green, blue or yellow fluorescent plastic with super-suction cup mount. **.29**
 Very convenient



AUTOMATIC Back-up Light **3.79**
 Large diffusing type lens sends a flood of light behind the car. Chrome finish.



HAND SPOTLAMP—Plugs into cigar lighter. 4" sealed beam unit lights 1500 feet. **3.98**



ZIPPER KEY CASE—Smooth coil-grain cowhide; holds 6 keys and license cards. **1.25**



TRUNK LIGHT—Illuminates spare tire, luggage, etc., when trunk is opened. **1.69**



STEERING WHEEL MUFF **.36**
 Takes the chill off the steering wheel; one size fits all cars.



MOHAIR MUFF—Warm and soft, for winter driving comfort. **.36**



ELECTRIC ENGINE HEATERS
UNIVERSAL "HOSE-LINE" HEATER—With 400-watt Colrod element and 11-ft. weatherproof cord. **2.89**
SCREW-IN TYPE—Fits in engine block. For most General Motors built cars. **4.95**
PLUG-IN TYPE—For most Chrysler-built cars to 1954. Ford V8 products, 1955-56. **5.45**
 **5.95**

Save Safely

CANADIAN TIRE
 ASSOCIATE STORE
 25 Yonge St. N. RICHMOND HILL
 Turner 4-1196

BUTTONVILLE

Correspondent:
 Mrs. F.H. Leaf
 R. R. 2 Gormley
 Phone AXminster 3-6188

The installation of a new oil furnace at Brown's Corners United Church was delayed a week, but is now in working order, leaving much more room in the basement for Sunday School accommodation. On Friday night, December 21, Christmas Concert-goers will enjoy the benefit of the new heating system.

Mr. and Mrs. Roy Marson are happy to have their new son home from the hospital, as of last week — a very special Christmas gift for Christine and John.

Miss Lillian Risebrough of Willowdale has been a guest at the home of Dr. and Mrs. George Kelly Sr.

Mrs. Robt. Rodick's cousin, Mr. McAllister of Bolton, visited at the Rodick home for several days last week.

Mr. and Mrs. Aubrey Stephenson entertained Brown's Corners United Church choir members when practise was held at their home on Thursday of last week. After an evening of Christmas music, refreshments were served by the hostess.

Sympathy of the community is extended to the family of Mr. Bruce Beatty, Bobmere Farm, who died suddenly at his home early last week. Mr. Beatty was a brother of Rev. G. A. Beatty of Agincourt.

Mr. and Mrs. Ross Hord, Judy and Jim, have had a few visits from the other member of the family, David of Marmora, this autumn, and are looking forward to seeing him at Christmas.

W.I. Euchre Series Ends
 Ken Foster was the grand winner with a score of 391 for four games when the Buttonville W.I. Euchre Fall Series came to a close on Friday evening of last week. Eleven tables of players were in attendance and prizes for the night were won by Mrs. Ada Wood, Miss Velma Findlay, Mrs. Jack Leaf, Bert Nichols, Ken Foster and W. J. Cox. Mr. Ashton Calvert won the lucky draw chicken, and freezeout winners were Mrs. Cowling and Mrs. Wray, Hugh Allen and Elmore Evans. Hostesses for the evening were Mrs. Charles Hooper, Mrs. E. Walton, Mrs. G. Oakes and Miss M. Matheson.

Players are asked to remember the Cancer Society Benefit Bridge and Euchre in Buttonville Hall January 7 and the beginning of the winter Euchre series on January 11.

Misses Lynda Leaf and Beverley Ashton spent last week-end with Mr. and Mrs. Fred Leaf, Buttonville W.I.

Mrs. John Wilkins entertained W.I. members on Thursday of last week when they met at her home for their Christmas meeting.

Mrs. Charles Hooper was in the chair and Mrs. James Rodick was secretary. When members answered the roll call, they made donations of home made candy which were given to Mrs. Wm. McGimpsey who will turn it over to Mrs. Brown of the Salvation Army for distribution among elderly patients at 999 Queen St. W. The Christmas atmosphere was set when Mrs. Gordon Purves sang a group of Christmas carols and pop songs.

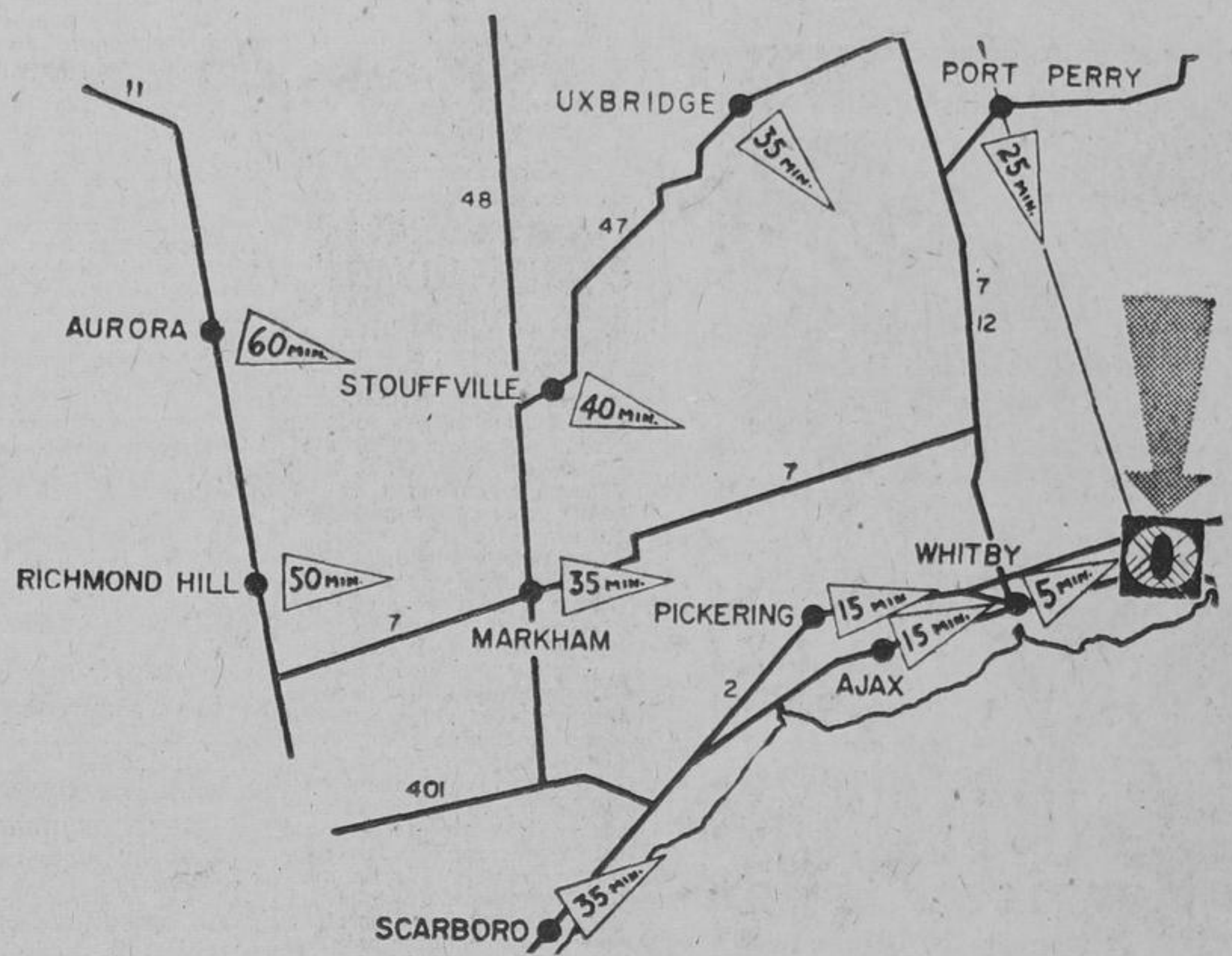
The speaker of the afternoon was Mrs. B. C. Sisler, who told many details of ordinary life in Denmark. Describing the difficulties of the average apartment dweller in Copenhagen (and there are almost no self-contained houses), Mrs. Sisler told of having to walk up four or five flights of stairs for there are no elevators. Everyone heats his own apartment and must carry coke upstairs and ashes downstairs. There are no electric appliances as we know them, and shopping is a process of visiting one store after another for each separate article purchased. Parcels must be carried, as very few people are allowed to buy cars. Danes are probably the most cultured and widely travelled people in Europe. A group of 5,000 Danish housewives recently went to Rome on a tour — the group is a subsidiary of the Associated Countrywomen of the World, with which Women's Institutes affiliate. After Mrs. Sisler's talk Mrs. F. Leaf read selections of poetry and Mrs. Purves sang another group of songs.

Following the meeting a friendly time was enjoyed when the hostess, assisted by Mrs. George Oakes, Mrs. J. Rodick and Mrs. Charles Hooper served tea.

BUY
SENTINEL
 THE BEST IN ALUMINUM STORMS
 Factory installed and guaranteed
 PETE CRAPPER
 AV. 5-2558

STEEL LINTELS
I BEAMS
 Kept in Stock
 Portable Crane
 Service
STEEL FABRICATING
 To Customer Specifications
PINDER BROS. LTD.
 2 Otonabee
 BA. 1-3344

Richmond Hill Is Only 50 Minutes From



Follow the
GIANT
 Searchlights

Visit
Santa Claus
 in his arctic workshop every day until
CHRISTMAS

FREE!
 candy canes

FREE!
 Puzzle books

SHOP THURSDAY, FRIDAY AND SATURDAY TILL 9 P.M. AND ALL DAY MONDAY, DECEMBER 24