

Correspondent: Norm McDermott,
Phone Richmond Hill 364r13

Home and School Clubs

It would appear that with all the organizations and associations that have had their origin in Richvale in the past year there would be very little left to consolidate. As it happens that is not so, for there is another group which has more than proved its worth in a great many communities throughout Ontario. The group referred to is the Home and School Club which has proven its value by being a necessary link between the school and the home.

The solution of important problems between the teacher and pupil and also the teacher and the home have been made possible by the liaison work of the Home and School group.

On October 13, which is next Thursday, the mothers of the district who are concerned with S. S. No. 24, Richvale, are invited to attend a meeting at the residence of Mrs. Rasmussen on Oak Avenue. The meeting is scheduled for 2.30 p.m. and Mrs. McLelland, a representative of the North York Home and School Association will be guest speaker. Object of the gathering is the possible formation of a Home and School group for Richvale.

Sunday School

For the past three Sundays a Sunday School has been in session in the school basement.

The meetings which take place from two to three p.m. have had gratifying response from the boys and girls. Mr. George Selkirk, who is leader of the meeting conducts the gathering in a non-denominational manner presenting stories from the Bible in a very understandable manner to the children.

It is Mr. Selkirk's objective to inaugurate a Sunday Evening programme for the adults and to this end he extends an invitation for the residents to join him this coming Sunday evening, October 9, in the school basement at 7 p.m.

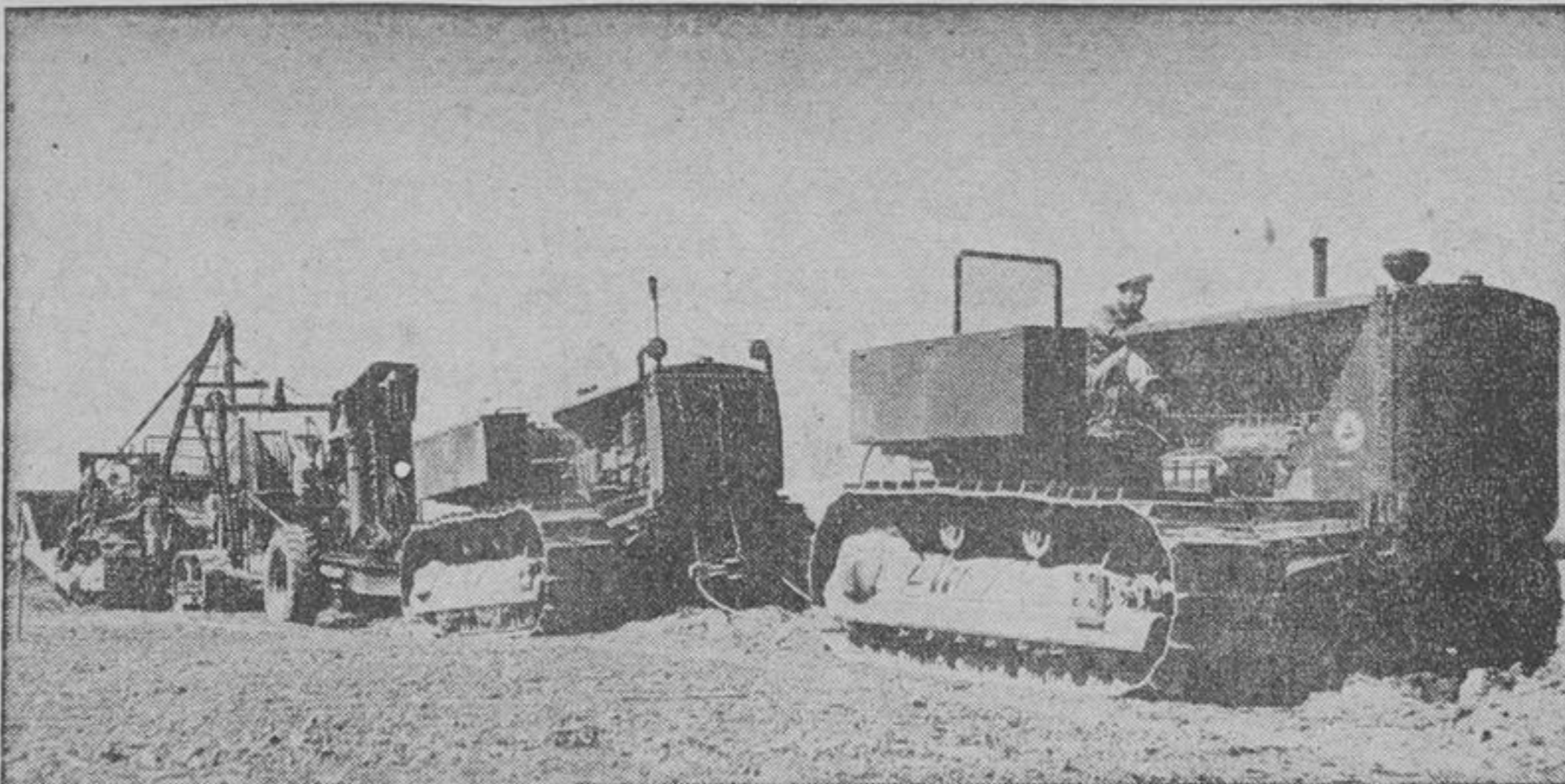
Guides and Brownies

The local association of the Girl Guides and Brownies will hold a meeting on Thursday, October 13, at 8.30 p.m. at the home of Mrs. R. Paul, 187 Spruce Ave. The mothers of the young ladies who are members of the above groups are invited to attend as are any others who have an interest in the groups.

That Car!

Well, well, so we keep walking — probably next time a new car will be parked out front. Yessir, the looked for and much awaited raffle of the Hillman Minx was climaxed last Saturday in Richmond Hill arena.

The East Vaughan Ratepayers Association put a substantial amount into their building fund and Mr. H. J. Browne of 211 College St., Toronto, put an English motor car into his garage. Many thanks to Mr. C. G. Baker, Spruce Ave., for his time and effort in directing the venture.



Fall plowing of a new type is already in progress north of Toronto, as Bell Telephone plant and construction men commence the laying of a telephone cable designed to provide storm-resistant long distance service on the Toronto-Barrie-Orillia route. The plow train shown above is towed by two caterpillar tractors. The plow itself third in the train plows a furrow 30 to 50 inches deep and lays the heavy lead-sheathed cable in a single operation. The cable is unreeled in 1,500-foot lengths from huge drums on a platform behind the plow. A scraper, towed behind, fills in the furrow and the following tractor tramps down the earth. Toronto-Barrie section will be ready in the spring, the remaining 26 miles in the fall of 1950.

Laying Of Long Distance Cable Is Under Way Through District

Cable-laying operations commenced recently at Steele's Corner, north of Toronto, as the first step towards the establishment of an underground "voice-highway" which will link Toronto with Barrie and Orillia. The lead-sheathed cable will initially provide 70 additional circuits on this important long distance route, and will also carry radio programs.

The Toronto-Barrie section of the new cable is expected to be in service next spring, and completion of the Barrie-Orillia section is scheduled for the fall of 1950.

A repeater station, which will pick up and amplify voice currents passing through the cable will be built at Kettleby. A contract for its construction has been awarded to the Emery Construction Company of Barrie. A voice current passing over a wire fades after a certain distance; to ensure clear transmission it is necessary to step up the current at intervals. This is done by means of a vacuum tube repeater, similar in principle to a radio tube. Repeater equipment in Barrie will step up voice currents for the Barrie-Orillia section of the cable.

Sixty-four miles of the 82-mile cable will be buried by means of a cable plow and the remaining 18 miles will run through underground conduit. Thus, the new long-distance circuits will be protected from wind and ice storms.

A long distance cable network, extending from Windsor to Quebec City, was laid largely by the cable-plow method that is being employed on the new northern route.

Single Operation

By this method, a cable plow,

towed by two caterpillar tractors, plows a furrow from 30 to 50 inches deep and lays the lead-sheathed cable in a single operation. The cable is unreeled in 1,500-foot lengths from huge drums carried on a platform behind the plow. A scraper at the rear fills in the furrow, and another tractor follows to tramp the earth down firmly.

At the junction points where one cable length ends and another commences, the cable gang digs a hole, leaving the two ends exposed. A splicing gang follows to splice the ends together.

The cable is filled with gas under pressure as a protection against moisture. If the lead sheath is punctured, the gas pressure prevents moisture entering for some time, and when the pressure drops below a certain point, an alarm is sounded at the repair centre.

The repair crew is then able to gauge roughly the location of the puncture, and by taking a series of pressure readings in the vicinity they are able to calculate the position of the break to within a few feet.

Final location of the puncture is made by the time-honored method used by bicyclists — the area of the break is painted with soap-suds and bubbles then reveal even the smallest puncture.

In this way, the cable can usually be repaired before moisture has caused sufficient damage to interrupt service.

The original 70 circuits provided by the Toronto-Barrie-Orillia cable may be considerably augmented in future years by the use of a "carrier system," and eventually it may carry as many as 800 con-

versations simultaneously. Eventually the company plans to extend the cable facilities to North Bay.

SASH GLAZED AND DELIVERED

RICHMOND HILL HARDWARE
Phone 426

E. J. HINSON

Interior & Exterior Decorator
Elm Grove Oak Ridges or King 84r4

W. J. SMITH & SON

Painting

Interior and Exterior Paper Hanging

Phone Richmond Hill 343r6
213 Oak Ave., Richvale

STORAGE TANKS SUPPLIED

100 - 500 Gal. Gauges, Accessories, Draft regulators, Service to Space Heaters, etc.

D. GIFFEN

31 Benson Ave., Richmond Hill
Phone 399M

ELECTRIC WIRING & REPAIRS

GILSON HOT AIR FURNACES AND OIL BURNERS

Richmond Hill Electrical Shop

82 YONGE — PHONE 296W

DAVID McLEAN SELLS REAL ESTATE

For All Year Enjoyment EASY —

FLOOR POLISHERS, VACUUM CLEANERS, WASHERS

OIL-O-MAGIC

FURNACE OIL BURNERS

QUAKER —

OIL BURNING SPACE HEATERS

STROMBERG-CARLSON —

RADIOS AND COMBINATIONS

Supplied and Guaranteed

by FERGUSON

6 Elizabeth St. Richmond Hill,

Phone 148

REFRIGERATION SERVICE

In Richmond Hill and District

REPAIRS TO ALL MAKES, COMMERCIAL, DOMESTIC

ALSO ELECTRIC RANGE REPAIRS

WORKMANSHIP GUARANTEED

24 Hour Service

HAROLD PATTON

85 WRIGHT ST.

PHONE 428W

RICHMOND HILL

PUBLIC NOTICE RE TWP. OF KING FREE CHEST X-RAY SURVEY

Chest X-Ray Surveys will be conducted by the National Sanatorium Association throughout the Township of King as follows:

Oct. 13 — Nobleton Oct. 19 — Kettleby

Oct. 17 — King Oct. 21 — Schomberg

Hours in each place are 1:00 p.m. to 9 p.m.

Two years have passed since the last survey in 1947 and it is deemed advisable that people should have regular X-Rays taken.

Your co-operation and assistance is urgently needed to make this Survey a success.

Further information will be mailed at a later date.

SHEPPARD & GILL LUMBER CO. LIMITED

LIMITED

SERVING RICHMOND HILL AND DISTRICT

FOR 19 YEARS

IN LUMBER, TRIM, SASH, DOORS,

ASPHALT PRODUCTS, GYPROC,

TEN TEST, INSULATION

PHONE 27

RICHMOND HILL

FOR EVERY TRUCKING SERVICE

Consult Us For Immediate Service

BUILDING SUPPLIES

Flagstone — Cement Blocks — Sand

Gravel — Loam — Fill

Flats — Stakes — Dumps — Panels

PARCEL DELIVERY SERVICE

SPENCLEY BROS.

Phone Willowdale 2809

Contractors and Jobbers

EFFICIENCY — COURTESY — ECONOMY

ENJOY THE THRILL OF DRIVING

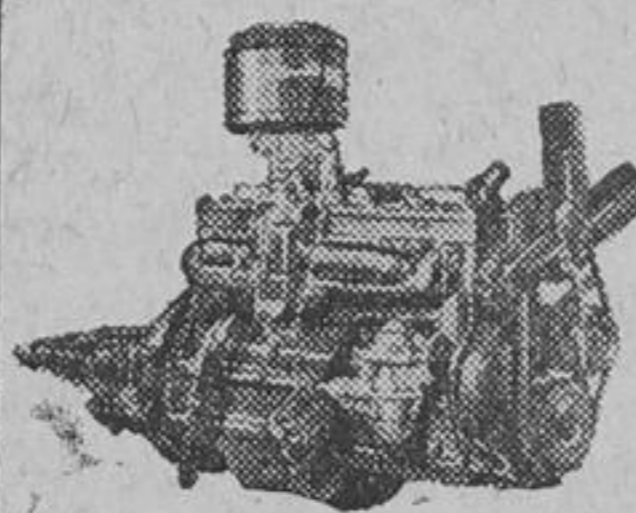
"The New Thrill!"



A PRODUCT OF GENERAL MOTORS

FUTURAMIC OLDSMOBILE

THE "RIDE THRILL"



Everywhere they're saying, "How's it done—how can a car ride so smoothly?" We can tell you part of the secret is in Oldsmobile's Rigid X-member Frame, cushioned on great deep coil springs at every corner . . . its needle-bearing

universal joints and double-acting shock absorbers. But most important of all, there's the miracle-smooth power of Oldsmobile's new Big Six Engine, now even more powerful and smooth than ever before!

THE "STYLE THRILL"



You don't have to own an Oldsmobile to enjoy this thrill! Just to watch the lovely profile of a Futuramic Beauty roll by on the road will give you a lift. But only the owner can experience all of Oldsmobile's "Style Thrill" . . . not just that fleet-flowing first-glance smartness, but the painstaking perfection of every last detail, outside and in. You'll enjoy that beauty more and more through all the years you proudly drive your Futuramic Oldsmobile!

GORDON'S GARAGE
KING ONTARIO