

Do You Need a Bathroom or a Hot Water Heating System?

We can install complete units with guaranteed work under a time payment plan.

The down payment is only 10% and the terms are easy, spread over a period up to two years.

Richmond Hill Plumbing & Heating

Phone Richmond Hill 296W
82 Yonge Street P.O. Box 119



DON'T SEND TO
the U.S. or abroad

FOR GOODS UNLESS...

... you have first consulted your nearest Customs Office. The import of certain goods is now prohibited in order to conserve our U.S. funds. If the article you wish to buy is on this prohibited list, it will not be allowed to enter Canada, even though you have paid for it.

Don't be disappointed... Before ordering goods from the U.S. or other countries, consult your nearest Customs Office or write

Emergency Import Control Division,
Department of Finance,
Ottawa. E81

Richmond Hill Taxi

TRY OUR PICK UP AND DELIVERY SERVICE.

R. E. B. Haughton
TELEPHONE 300

2 Arnold St. Ex-Servicemen

Petrolane Bottled Gas

The ideal fuel beyond the gas mains
Enjoy more kitchen freedom
Make your cooking hours happy hours
See our display of gas ranges

Petrolane Corporation Ltd.

Distributors of Bottled Gas
YONGE ST. THORNHILL PHONE 170-J



Busy

at the biggest construction job in our history

NEW CABLES, telephones, switchboards and buildings are all required to provide more telephone service for more people than ever before.

The work is going ahead at the fastest possible pace. It takes skill; it takes time; it takes money. It will ultimately bring faster, clearer, more dependable telephone service to every applicant when and as he wants it.

The public can be assured that we will continue to provide the best telephone service at the lowest possible cost.

THE BELL TELEPHONE COMPANY OF CANADA



ENGLISH JOURNEY

ARTICLE 3
Food and Rationing

Everybody in Canada is greatly interested in the food situation in England and many conflicting stories have been told. Here is what I found.

One of the most remarkable changes since I was here in 1942 is found in the shops. Where windows were absolutely bare in 1942, they are filled with merchandise of all kinds today. Stores with large sections roped off, are groaning under the load of goods.

But here is the rub, these goods are most difficult to buy due to the mass of red tape and restrictions, for rationing in England is a fearful thing to experience. English people are tied down by restrictions and bureaucratic rules and regulations to an unbelievable extent.

I confess that I cannot understand much of it, but I find that many people who have been here ever since before the war are just as puzzled as I am.

First thing on arrival at Blackpool my wife and I had to go to the central food control office to get our ration books, for one cannot get along without them.

It took a whole morning to stand in line, get national registration cards, sign numbers of forms, most of which we knew nothing about, and finally receive books and coupons for meat, preserves, sugar, cheese, butter and fats, bacon, eggs, milk, clothing, bread, tea, soaps, points for cereals, canned goods, sweets, and several other things.

The clerical work in filling our forms, cutting off expired portions, etc., is tremendous. There must be an enormous waste of paper over this rationing for there are offices with large staffs in all except the smallest places.

In addition there is fuel control, gasoline control, building control, rent control, etc.

Once the ration books are received the newcomer may think he can start out to buy things. What a hope! You can only buy meat, milk, butter, eggs, bacon, sugar, jam, cheese, etc., at a store where you have registered, and it is difficult to change registration from one store to another.

Thus you have to take whatever your merchant cares to give you, or what he has on hand, and you cannot go to another store without a good reason and going through much red tape. Therefore if you think your butcher is not giving you fair treatment, about the only way you can improve matters is by trying to carry favour with him.

There are some few things that are neither rationed nor sold on points, such as fish, fresh vegetables and a few tinned articles such as fish and meat pastes, soups, etc., but in many cases the store has a sign over them reading "Reserved for our regular customers."

Although there is plenty of tinned foods in the stores, no one can buy much of it for each person only receives 28 points a month and 28 points will only buy a very little. Here is what is needed in points on some common items: salmon 32 points a tin; sardines 2 pts. a tin; fruit cocktail 20 points a tin; peas 5 points a can; beans 12 pts. a can; sda biscuits (or cream crackers as they are called) 4 pts. a lb.; chocolate biscuits 16 pts. a lb.; plain biscuits, 4 pts. a lb.; jelly powder, 4 pts a package and other things in proportion, so that the purchaser seriously studies just how he will use the slim allotment of points that he is given.

Bread and cake are sold on "bread unit" points, and 36 a month is allowed each person. A loaf of bread requires 4 "BU's" and the loaves look pretty small to a Canadian.

Where chickens are kept, the egg rations for every member of the family must be surrendered and 2 lbs. of chicken meal is allowed for each person's egg rations, so even the chickens have to go short.

On sweets, the ration is 12 oz. a month with an occasional increase to 16 oz. One lady told me that she had saved up her sweets coupons in order to buy a couple of pounds of candies for her daughter who was returning to boarding school, only to find that the coupons had expired the previous Saturday. She told me "I was ready to sit down and cry."

It is with fuel that the people really suffer. The first two weeks after we arrived, it was quite cold, with frost nearly every night. The English houses have a real chill in them, and the people huddle around a tiny grate fire. The fuel allowance in the north is 5,600 pounds a year and in the south 3,808 pounds.

The English homes have a real chill even in late spring and must be pretty grim in midwinter.

Electricity and gas are also in very short supply.

Gasoline is supposed to be so severely rationed that only essential driving can be done. The gasoline rationing has been the most difficult to enforce and there is a remarkably large number of cars on the streets and roads which seem to prove that there is considerable disregard of the regulations.

Tourists are supposed to receive special consideration, but we found there is a catch to that also. To get this tourist allowance, it is necessary to either bring your own car into Britain or else buy one to take home with you. Although my brother-in-law had a car standing idle, and we were bona-fide tourists, we could not get an allowance to drive in his car.

However, gasoline rationing is to be relaxed in June.

It looks to an outsider, as if rationing has been retained over long and when we arrived we noticed, a tremendous agitation to relax restrictions on certain articles, notably shoes, dry goods, and clothes. It was reliably reported that warehouses were bulging with merchandise that people have no coupons to buy.

It has been announced that restrictions on clothing are being reduced on May 11th.

There is more fresh fruit available, but bananas are only sold on allotment and are only sold for children.

The days when eggs were obtainable at about one egg a month seem

to be over, and while still not plentiful, are obtainable in small quantities. This, we were told, is a reasonable condition.

The meat ration is pitifully small. Our hosts last week bought their week's allowance of meat, for the whole family and ourselves, and we ate it all at one meal. It was a small roast of about 2 pounds. We are told that most people do the same thing, as it is foolish to try and spread it over several meals.

Bacon allowance is two ounces per person per week which is only about two small slices.

While the above would tend to show that there is not much to eat in England today, the fact is that everybody gets plenty to eat. The English still eat at least four times a day, for no one seems to be able to dispense with afternoon tea at about 4:30 p.m.

But the real trouble is there is too much monotony about the meals, which are too starchy. There is too much bread, plain cake and vegetables and not enough variety.

I have been staying at the home of relatives all the time I have been in England, but have eaten some lunches, dinners or teas at hotels.

In all the homes, the housewives complain that it is extremely difficult to make appetising dishes out of the same ingredients, day after day.

In the hotels and restaurants the average meal consists of a thick soup, which seems to be made with some starchy powder; a woefully small piece of mutton, beef or fish, or a meat pie made of ground-up meat, and an overly large helping of potatoes, and some kind of vegetable, usually cabbage, cauliflower, or greens; and a dessert usually made of some kind of cake or steamed pudding, with a custard sauce. Tea or coffee is not included with the meal, but may be purchased separately.

Chicken is not rationed but is extremely scarce and very expensive, so it is seldom seen.

Therefore the best things for Canadians to include in parcels to friends and relatives in England are canned chicken, pork products, salmon, or other fish, sugar, cheese, raisins or currants (which are absolutely unobtainable) jams and jellies in tins. Butter arrives in excellent condition if packed in airtight tins.

Second-hand clothes in good condition also are welcomed and very few people are too proud or fastidious not to be happy to wear discarded clothes received from friends in Canada, provided of course that they are in fairly good condition.

Soap is also welcomed as the soap allowance is only 3 oz. a week of all kinds, and the quality is poor.

MANY FARM OWNERS

According to the latest decennial census taken in 1941, there were 732,715 farms in Canada of which 75.1 per cent were owner operated and a further 11.6 per cent were operated by owners who rented additional parcels of land. Only 12.7 per cent of farms in Canada are operated by tenants.

The land policy, including the granting of free homesteads to settlers in Western Canada has encouraged farm ownership. In the past few years there has been a decided trend towards tenant farming in Western Canada. The proportion of owner operated farms is lower in the Prairie Provinces than in the other provinces.

MEET THE DENTIST

Every child should make the acquaintance of the dentist at the age of about three years and visit him twice a year from that time, according to national health experts. In this way dental treatment can be kept to a minimum and each visit made brief and comfortable by filling the cavities when they are very small. Valuable advice can also be obtained to assist in preventing new cavities, crooked teeth and gum diseases.

It's the height of tactlessness to never make a mistake.



FROM THE "BLUE BOOK" OF FAMOUS CANADIAN TRAINS

THE Inter-City LIMITED

The "Blue Book" — your Canadian National Time Table — guide to Everywhere in Canada.



Day in, day out, for more than twenty years, The Inter-City Limited has been providing regular, dependable service on its 'through' main line route... between the great industrial cities of Montreal, Toronto*, Hamilton, London, Windsor, Detroit, Chicago. Over the years, the flow of travel between these busy and important centres... travel for business... vacation and pleasure travel... has moved in growing volume on this popular International train. It's the pleasant way to 'go places', because a wide range of sleeping accommodations, comfortable modern coaches, lounge cars and dining car service provide all the facilities to make your journey enjoyable. And it's the smooth, fast way to go... a perfect roadbed... easy curves, long "straight-aways"... double track all the way between Montreal and Chicago. Next time travel on the famous Inter-City Limited. You'll ride well, sleep well, arrive refreshed.

* Pool service Montreal — Toronto only.



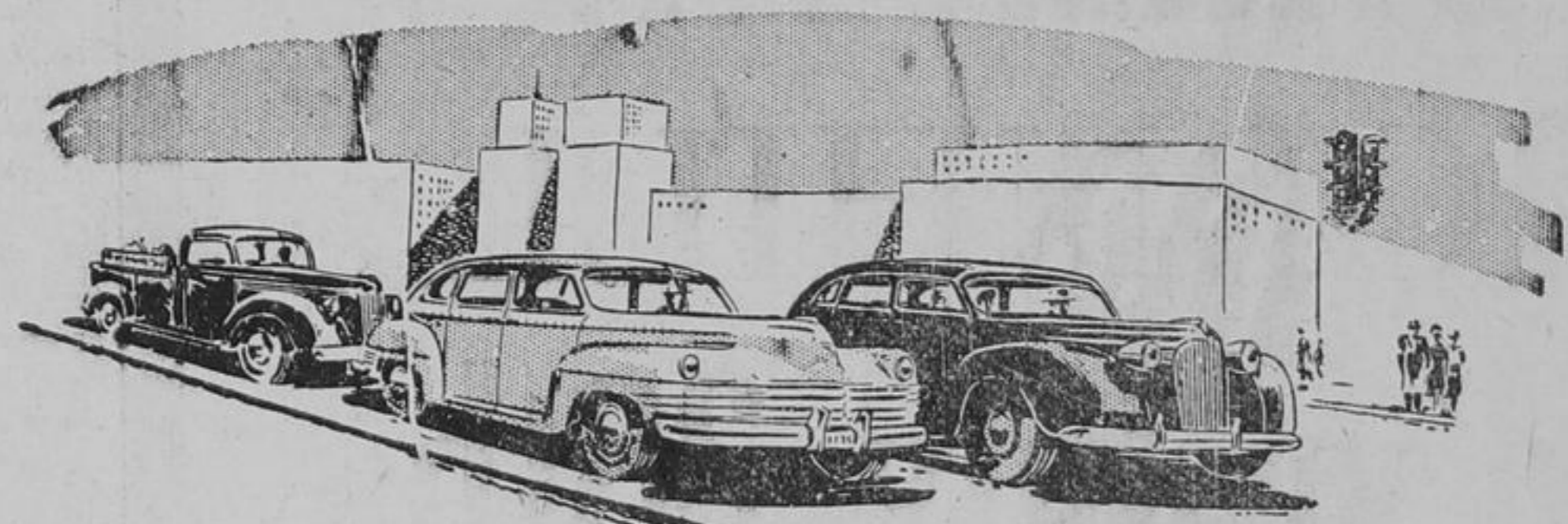
COURTESY AND SERVICE
Whether at home — or "going places" — in all your contacts with Canadian National, you will experience courtesy and service.

CANADIAN NATIONAL

RAILWAYS • AIRLINES • STEAMSHIPS • HOTELS • EXPRESS • TELEGRAPHS

T8-29

Restore Lost Pep!



REPLACE THAT "WORN-OUT" ENGINE WITH A CHRYSLER METHOD REMANUFACTURED ENGINE

You can restore new-car pep in just one day by having us install a Chrysler Method Remanufactured Engine in your Chrysler-built car or truck. Chrysler Method Remanufactured engines are not ordinary "overhauled" or "re-built" engines. Chrysler Method Remanufactured Engines are different. They are precision-built to rigid specifications laid down by Chrysler Engineers. Every Remanufactured

Engine gets a NEW crankshaft. All parts which do not meet engineering specifications are replaced with Genuine Chrysler-engineered parts. Every Chrysler Method Remanufactured Engine is tested on a dynamometer and is guaranteed to develop the same torque and horsepower as a new engine. Come in to-day and let us show you what is different about the CHRYSLER METHOD of Remanufacturing engines.

Don't Repair... REPLACE!

BOND LAKE GARAGE
OAK RIDGES, Phone King 4311 CARS CALLED FOR AND DELIVERED