

**SHEPPARD & GILL
LUMBER CO.**
Dealers in
Lumber, Lath, Shingles
Asphalt Roofing, Gyproc
Telephone 27

**THE MILL
RICHMOND HILL**

CLIMAX BUG KILLER
ARSENATE OF LEAD
ARSENATE OF LIME
BLS. OF SALT, COARSE AND
FINE, BAGS OF 100 AND
FIFTY POUNDS
ALL GREATLY REDUCED

J. F. BURR
Day 139 Phones Eve's 82w

SPECIAL

Glasses that suit you is what you want. You may have your choice of our guaranteed "DELUKE'S" gold-filled rimless mounting or frame, latest shapes, plus best quality single vision Toric lenses.

\$8.50

Including Examination
For Day or Evening
Appointment Phone
EL. 4820

F. E. LUKE & SON
163 YONGE ST.
Opposite Simpson's — Take Elevator

Phone HYland 2081 Open Evenings
Res. Phone 9788

Johnston & Granston
MANUFACTURERS & IMPORTERS
OF CANADIAN & FOREIGN
Granite Monuments
1849 Yonge St. (east side)
Between Merton & Balliol Sts.

SAND — GRAVEL

From Maple Gravel Pit
GENERAL CARTAGE
by Truck
WM. McDONALD
Telephone 62 Thornhill

**BROTHERTON'S
Steamship** BOOKING OFFICE

Special Sailings to the
Homeland by
Canadian Pacific, Cunard and
Anchor-Donaldson lines at
Lowest Rates.
Photos and Passports Secured
All enquiries confidential
We look after your wants right from
your home.
Phone Willowdale 63J
Office Stop 6 Yonge St., Lansing

TRAVEL SERVICE

Steamship Reservations to
Great Britain and the
Continent.
Premier service to West Indies.
PASSPORTS ARRANGED FOR
Rail tickets and sleeper
Reservations.
EXPRESS TELEGRAPH
Can. National Station
Richmond Hill
Y. B. Tracy, Agent Phone 169

**NEWS AND INFORMATION FOR THE
BUSY FARMER**

Production of creamery butter in Canada for the month of January, 1936, totalled 9,388,090 lbs., an increase of 17.4 per cent, or 1,389,949 pounds, compared with January, 1935.

According to the annual report on farm values for 1935, there were 2,931,337 horses in Canada during that year; 3,849,200 milch cows; 4,971,400 other cattle—total cattle, 8,820,600; sheep, 3,399,100; and swine, 3,549,200. Although the number of animals was less than in 1934, the value was considerably greater, showing an increase of 18 per cent, or a total of \$75,489,000.

The average values per head of live stock in Canada in 1935 were estimated as follows, (with the 1934 values in brackets); horses \$65 (\$57); milch cows, \$35 (\$29); other cattle, \$22 (\$17); sheep \$5.02 (\$4.18); swine \$11.77 (\$9.86). The average value of unwashed wool per pound was estimated at 12 cents as compared with 10 cents in 1934.

Wheat Exports

The exports of Canadian wheat to Great Britain during the first three months of 1936, namely 11,604,111 cwt. showed an increase of nearly 70 per cent over the quantity shipped in the corresponding months of 1935. During the same period, Canadian flour exports to Britain advanced from 883,084 cwt. in 1935 to 944,445 cwt. and the sales of Canadian lard on the British market were more than trebled, according to British statistics.

Wheat Crops

Winter wheat is one of the best cash crops and a reliable source of straw. Ontario farmers have in the past grown as much as 1,000,000 acres of this crop annually. The area devoted to winter wheat in 1935 was 555,100 as compared with 425,600 acres in 1934. Production amounted to 12,601,000 bushels as compared with 6,724,000 in 1934, when the crop was badly winter-killed. The 1935 price was 71 cents as compared with 88 cents in 1934.

Dry weather during the summer of 1935 and pressure of work in harvesting a large crop of spring grain resulted in less fall wheat being sown. The acreage seeded does not exceed 70 per cent of that sown in the fall of 1934. Excellent weather conditions, however, have resulted in better crop prospects.

There is no carry-over of winter wheat. That of lower grade is fed to livestock and there is a good demand of high quality for the manufacture of pastry flour and cereal products. Considering wheat as a cash crop as one which affords an opportunity for weed control and division of labor, the acreage next year should reach at least normal levels in the fall wheat areas.

Spring wheat yields are much lower than those of winter wheat. The 1935 crop of 98,800 acres produced 1,857,000 bushels. The greatest production is in the northern and eastern counties.

Weeds in Cereal and Grass Seeds
With reference to weed classifica-

**Real Estate
Insurance
Conveyancing
Estates Managed
Rents Collected**
J. R. HERRINGTON
93 Yonge St., Richmond Hill
C.N.R. Money Order Office

tion and seed grades under the Seeds Act, weeds are classified into three groups according to the seriousness of their character. The first group consists of primary noxious weeds, the nine members of which are couch grass, bladder campion, dodder, field bindweed, Johnson grass, ox-eye daisy, perennial sow thistle, white cockle and wild mustard. The second group is known as the secondary noxious, which includes ball mustard, blue weed, Canada thistle, chicory, field peppergrass, cow cockle, darnel, docks, false flax, forked catchfly, hare's ear mustard, night-flowering catchfly, purple cockle, ragweed (common, great and perennial), rib-grass, Russian thistle, stilkweed, stink-weed, tumbling mustard, wild carrot, wild oats and wild radish. The third group contains a long list of lesser weeds such as catsnip, lamb's quarters, cinque foil, etc.

No seeds of group one, primary noxious weeds, are allowed in grades No. 1 and No. 2 for seeds of cereals and other field crops, but allowance is made in grade No. 3 of cereal and field crop seeds for five primary noxious weed seeds, or 15 primary and secondary weed seeds combined, 100 weed seeds of all kinds and 300 seeds of other cultivated plants per pound.

No. 1 grade for seed of clovers and grasses allows no seeds of primary noxious weeds. No. 2 grade allows five primary noxious weed seeds per ounce or 20 primary and secondary weed seeds combined per ounce, while No. 3 grade allows 25 primary noxious weed seeds, or 80 primary and secondary noxious weed seeds combined, or a total of 500 weed seeds per ounce. The use of seed grain that has not been well cleaned is responsible for the introduction of many new weeds and the increase of those already in the land.

A FAVORITE TESTED RECIPE

Strawberry Jumbles
4 cups strawberries, 1 cup granulated sugar, ¼ cup hot water, 1 cup pastry flour, 8 teaspoon baking powder, ¼ teaspoon salt, ½ cup granulated sugar, 2 tablespoons butter, ½ cup milk.
Cook strawberries in covered saucepan with sugar and water, cut shortening into sifted dry ingredients, add milk, combine well. Drop spoonfuls into strawberry mixture, cover tightly. Cook at slow heat for 20 minutes with removing cover. Serve at once. Serves 8.

SLATS' DIARY
(By Oliver N. Warren)

Sunday: We drove over to Jiggsville in the ford & had lunch & potatoe sallid with aigs in them and etc. When Ma ast Pa why was he washen his spoon he sed to keep from getting aig in his pocket.

Monday: Jane has a flashey new dress & sed to me it looks so mutch like a sofey pillar that she has been set on several times. When she had it on I pre- soom.

Tuesday: I was sick to the stum- mick & a littel lore down this p. m. & Pa sed he xpected I et to menney green appels as he tolo me the cher- rys wasent ripe. But I am enklined to suspishen the cherrys. Some how.

Wednesday: Reggie Reddykash are bankers yung kolledge bred son tride to sell sum life ensurence duren va- cashen. The city colector sed to him he cudent sell none with out no licents. Reggie replide & sed he knowed he cudent sell none but did- dent no why was it.

Thursday: A farmer writ the noose- paper where Pa works that his otes is ofel weedie & what shud he do. Pa diddent no but the offfis devil sed tell him to weed 'em & reap & the editur sed the devil will make a grate editur.

Friday: Jake sed he found a wur- rum in his spinnich this noon & he diddent no which vita mine it was but he et it. & it tasted bettern the spinnich he sed.

Saturday: Jane may have to be operated on for sum thing & ast me how long wood it be after she took ether before she new eny thing. It was the chanct of a life time so I sed I guest about 30 yrs.

ICE

E. SAMBROOK

Phone
Willowdale 205
Thornhill 15
Richmond Hill Phone 33
Austin's Drug Store
DAILY SERVICE

DOMINION DAY

LOW RAIL FARES

Between all points in Canada. Take advantage of these low rail fares to spend a delightful Dominion Day holiday!
FARE and ONE THIRD for ROUND TRIP
Minimum Rail Fare 25¢
Tickets good going Tuesday, June 30, until 2 p.m., Wednesday, July 1. Return Limit, leaving destination not later than Midnight, Thursday, July 2.
For fares and further information apply Ticket Agents
CANADIAN NATIONAL

**Goodyear
TIRE PRINTS**

Prove before you buy that Good-year G-3's will stand up under long and exacting use.

Come in and let us show you tire-prints of tires on cars in this locality. Judge for yourself what splendid service Goodyears will give you.

Goodyears are the tires for Happy Motoring!

We are fully equipped to give prompt and efficient tire-service.

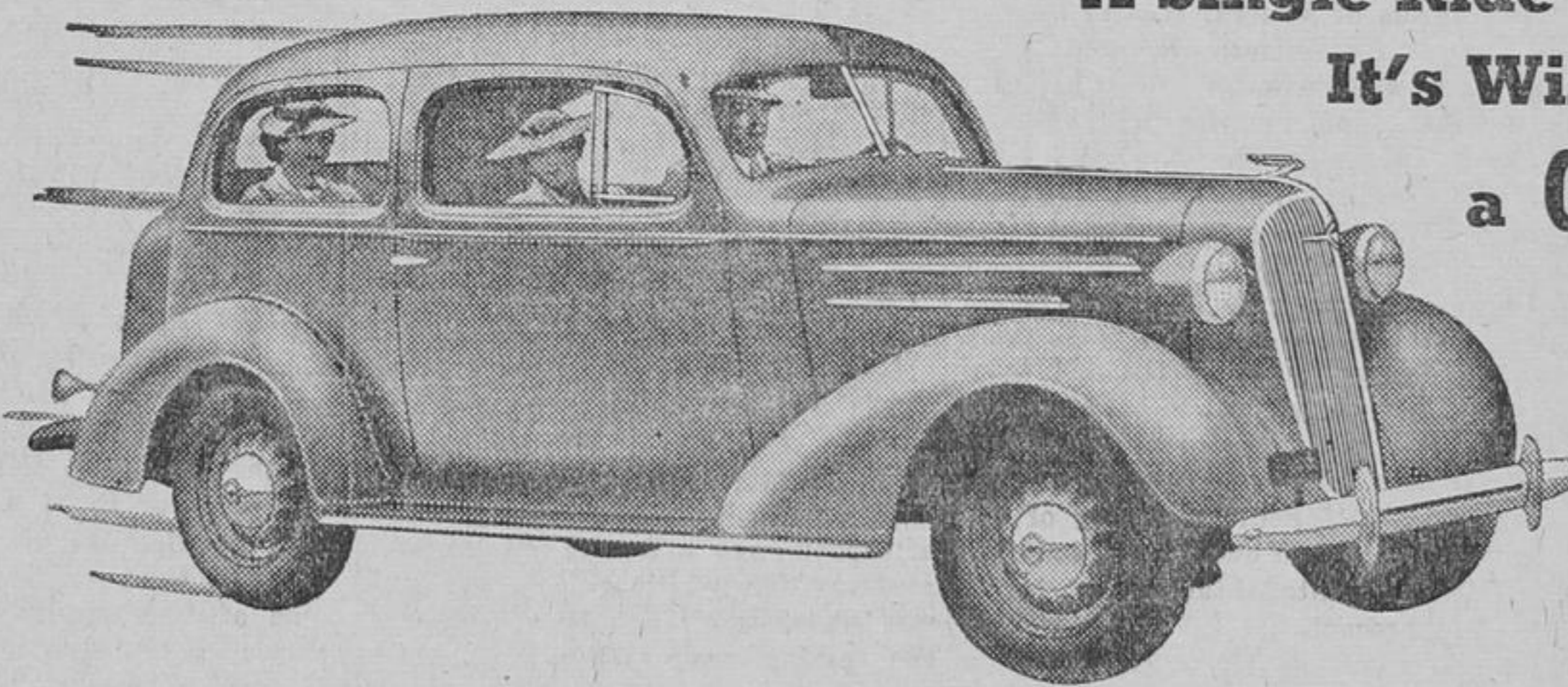
Young's Service Station

GAS, OIL and ACCESSORIES
NORTH YONGE ST. RICHMOND HILL

THE ONLY COMPLETE LOW-PRICED CAR

BETTER than WORDS

A Single Ride Proves
It's Wiser to Buy
a CHEVROLET



ONLY Chevrolet in the low price class offers you all the good things of motor- ing . . . proved by experience . . . and recognized by public preference.

Swerveless, perfected Hydraulic Brakes! Streamlined Fisher Bodies with the protect- ing, solid steel Turret Top! Valve-in-Head, high compression engine that saves you money on running costs every mile and

minute! Fisher No-Draft Ventilation to guard your health! Improved "Knee-Action gliding ride! And Safety glass of the finest quality in every window!

But—far better than words—step in behind the wheel and let your own actual driving test prove every claim we make.

Payments to suit your purse on the General Motors Instalment Plan.
*On Master De Luxe Models

CHEVROLET

GIVES YOU ALL SIX . . . PERFECTED HYDRAULIC BRAKES . . . TURRET TOP BODIES BY FISHER . . . VALVE-IN- HEAD ENGINE . . . FISHER NO-DRAFT VENTILATION . . . KNEE-ACTION (on Master De Luxe Models) . . . SAFETY GLASS THROUGHOUT

PRICED FROM
\$736

(Standard Series 2-pass. Coupe)
Master De Luxe Models
from \$864
Delivered at factory, Oshawa, Ont.
Government taxes, freight and
license extra.

Public Attention

New Low Spring Prices on Anthracite Coal

Now is the time to order next winter's supply of fuel and save many dollars.

THE LOWEST PRICES FOR MANY YEARS

To Farmers—Get our prices on all the best grades of Seed Corn, also Mangel and Turnip Seed

POULTRY FEEDS — DAIRY FEEDS
BUILDERS' SUPPLIES

I. D. Ramer & Son

PHONE 10

AT THE ELEVATOR

THORNHILL MOTORS Thornhill Ontario