

CASTROL OIL

We are exclusive representatives in this district for the Famous Castrol MOTOR OIL. It pays to use the Best. Call here for your next change of oil and be assured of good service and quality products.

HAROLD REID'S Service Station
 GENERAL GARAGE SERVICE
 Sieberling Tires Motor Accessories Gas and Oil
 ELGIN MILLS ONTARIO

Roup, Coccidiosis, Canker, Chicken-Pox, Cholera, White Diarrhea

Those Diseases are Contagious

Peerless Poultry Prescription

—In Liquid Form—

Kills Germs - Makes Hens Pay

Thousands of hens are lost annually through contraction of disease. One sick bird drinking at the water fountain can poison the entire flock before you discover the ailment. Peerless Poultry Prescription used in the drinking water daily kills the germs and prevents the further spreading of disease.

PEERLESS POULTRY PRESCRIPTION

is a remedy for the entire poultry family and will save you lots of dollars. Every bottle guaranteed.

Get it now—a 16 oz. bottle \$1.00

SOLD BY

J. F. BURR

DISTRIBUTOR

Dealer in Flour and Feed, Poultry Supplies, Etc

RICHMOND HILL

ONTARIO

NEWS AND INFORMATION FOR THE BUSY FARMER

A Word to Junior Farmers
 "Hats off to the past, coats off to the future," was the slogan given to Junior Farmers by Mr. J. B. Fairbairn, Deputy Minister of Agriculture, in an address at a banquet tendered this organization in Toronto last week. Mr. Fairbairn impressed upon his youthful hearers the fact that money was not everything. "The greatest force in the world to-day is intelligence," he said, "in urging his audience to develop an ideal. Honesty and straightforwardness are of greater service to agriculture than monetary returns."

Current Crop Report

Live stock throughout the province is reported to be in a generally good condition. In Brant the absence of rain has created a difficulty as far as watering stock is concerned, but farm work is well completed. Stock appears healthy in Bruce but some classes appear to have gone back somewhat because of the poor grass. In Essex a complete clean-up of the sugar beet crop is indicated. Fall wheat in Hastings is in good condition and the report states that live stock will go into winter quarters in fine shape. Cattle are moving briskly in Oxford with many head being shipped to Quebec and the United States. Between 30 and 35 carload of cattle have been shipped out of Temiskaming so far and all live stock is reported in first-class condition. Farmers in Welland are fearing a water famine this winter as a result of the absence of rain. Many wells and streams are already dry.

Fertilizer Tests on Potatoes

During the past summer the Department of Chemistry, O.A.C., in co-operation with the Boys' Training School at Bowmanville, has conducted an extensive test with fertilizers of varying analyses on the potato crop. In the experiments two sets of plots were used. On the first set, the fer-

tilizers were applied at the rate of 1000 pounds per acre and on the second set at the rate of 500 pounds. In each set one plot was left without fertilizer for comparison. In these tests and on this soil, a 2-12-6 fertilizer seems to give materially better results than any other. Where fertilizers were applied at 1000 pounds per acre, the average yield of potatoes was 241.5 bushels against an average where no fertilizer was applied of 162.1 bushels. This figured out at a net gain of \$56.90 for the crop. Where fertilizers were applied at the rate of 500 pounds to the acre, the average yield was 190.6 bushels as compared with 162.1 where no fertilizer was used, and a net gain of \$18.34 per acre was recorded. The experiments will be repeated next year.

Fattening Poultry

In crate-feeding poultry particular care should be taken to feed a ration which will produce the white fat and the milk-fed quality. The following ration has been tested and found suitable for crate feeding: Equal parts of middlings, ground oats and barley; equal parts of middlings, ground oats and ground new potatoes; equal parts of middlings, ground oats and mashed potatoes; equal parts of middlings, ground oats and cornmeal; equal parts of shorts, ground oats and ground barley; equal parts of low-grade flour, ground barley and ground oats; equal parts of ground whole wheat, ground whole oats and ground whole barley; equal parts of ground barley, ground buckwheat and bran.

New Plan of Instruction

Institution of a plan of instruction in rural districts in nutrition, home nursing and first aid, sewing, millinery and handicrafts, was announced at the 29th annual convention of Women's Institutes of Central Ontario in Toronto last week by the superintendent, Geo. A. Putnam. "It is evident," he said, "that many rural home workers cannot attend classes every

afternoon from day to day for two weeks or more, so we are planning to give instruction in a form which meets the convenience of either small or large groups. Instruction will be given for two, three, four days or a whole week, as well as the present courses. Up-to-date information will be given on nutrition, how to produce and utilize to the best advantage home grown products, how to remodel the old house to make it convenient, attractive and healthful, how to make one's own dresses and hats and how to make at a minimum expense many articles which add to the attractiveness, beauty and comfort of the home."

Recommend Cow Rations

A committee of leading agriculturists was recently appointed to study rations and suggest mixtures of feeds that would be suitable to Ontario conditions. The committee comprised, Prof. J. C. Steckley, Ontario Agricultural College; R. W. Wade, Director, Ontario Live Stock Branch; W. J. Bell, Kemptville Agricultural School, and W. R. Reek, Ridgeway Experimental Station. The following ration was suggested for cows in milk and getting clover or alfalfa hay: 1 pound hay per 100 lbs. live weight; 2 pounds silage per 100 pounds live weight; 2 pounds roots per 100 pounds live weight; and a grain mixture of 200 pounds ground or rolled oats, 200 pounds bran, 100 pounds barley, 50 pounds oil cake and 50 pounds cotton seed. Another suggested mixture is 200 pounds oats, 100 pounds gluten, and 25 pounds oil cake. The protein content of the first ration is 18 per cent. and of the second 17.1-2 per cent. Either is to be fed at the rate of one pound of meal for each four pounds of milk. Wheat may be used in place of barley and, if roots are not available, feed three pounds silage. If silage is not available, feed four pounds roots per 100 pounds live weight.

FIRST BANK STATEMENT OF THE YEAR ISSUED IMPERIAL BANK OF CANADA SHOWS REMARKABLY STRONG POSITION

Imperial Bank of Canada 56th Annual Statement has now been issued to the Shareholders and a copy of it will be found on another page in this issue. It is an exceedingly strong statement and one that will give the public of Canada new heart regarding the condition of business in their country. We know that business is below the records for 1928 and 1929, but the trouble with most of us is that we think it is so far below that there is no virtue in comparison. As a matter of fact, the Bank's figures stand comparison remarkably well, and the Banks have always been considered the best barometer of business over Canada as a whole.

The total assets of \$148,000,000, indicate a shrinkage of only 4.14 per cent. The shrinkage appears chiefly in note circulation and non-interest bearing deposits. Interest-bearing deposits are only 3 per cent less than a year ago, and it must be borne in mind that all bank figures of a year ago are the highest on record in the history of Canadian banks. Deposits held for other banks show an increase of \$4,500,000.

The Bank's assets, in terms of percentage to Public liability, are divided as follows:—

| | |
|--|-------|
| Cash Assets | 20.37 |
| Quick Assets (bonds, stocks, call loans and Government and Municipal advances) | 35.63 |
| Percentage of Quick Assets to Public Liability | 56.00 |
| Current Loans and Discounts | 50.92 |
| Bank Premises | 55.09 |
| Sundry Assets | 86 |

The profits of \$1,424,081 as compared with profits of \$1,561,561. of last year (highest on record) are down \$137,480., or 8.8 per cent. Regular dividends of 12 per cent. plus a bonus of 1 per cent. have been paid, with a tax provided for and the usual contributions to Pension Fund and Officers' Guarantee Fund made, and the sum of \$300,000. was written off Bank Premises, leaving a balance to carry forward in Profit and Loss Account of \$740,545., an increase of \$21,581.

The report is thoroughly satisfactory regarding the condition of the Bank and generally reassuring regarding the situation of the country.

While David Sutherland, who has considerable land in the areas drained by the Holland River marsh drainage scheme south of Bradford, was digging a ditch around a twelve-acre plot, recently broken, he unearthed a pair of deer horns about three feet beneath the surface. Many logs and stumps are encountered by those engaged in this task in places where the oldest settlers claim no timber has been seen growing.

D. RUMNEY

CARTAGE AND LONG DISTANCE HAULING Toronto to Richmond Hill and Intermediate Points

Every Day
 PHONE CITY, HUDSON 8527
 RICHMOND HILL 30-J

THE BEST BIFOCAL

Enjoy Sharp Clear Vision and the appearance of youth with the new NOKROME Color free invisible

F. E. Luke & Son

OPTOMETRISTS
 163-167 Yonge Street Toronto
 Elgin 4820 Opposite Simpsons

SHAW SPECIAL COURSE

Our intensive method meets the needs of those whose time is limited and who must get some preparation for business. Complete Office Training, Complete Office Courses. Day, Night, and Correspondence instruction. We deal direct with you and your progress according to your own working powers. Catalogue free from Shaw Schools, Limited Bay & Charles Sts., Toronto. KI. 3165.

LOANS ON AUTOMOBILES and Contracts Re-Financed

John A. Campbell & Co. Limited

Automobile Bankers
 205-6 Bloor Building (Bloor at Bay) Kings. 5566-6020 Toronto, Ontario

Toronto Hamilton Ottawa Windsor London

John Dunlop & Son FLORISTS RICHMOND HILL

We solicit order for Cut Flowers for all occasions which will be promptly and cheerfully filled.

McIntosh Granite Co. Limited

MONUMENTS
 1623 Yonge Street Toronto
 Phone HYland 2622

--and now for Dad's shirts!"

Eleven cents extra apiece, added to the cost of your bundle, will take care of father's shirts now. This new service of completely finishing men's shirts, known as No. 6 on our list, is creating goodwill amongst our long list of regular customers and adding hundreds of new ones. Our success is due to the same good idea of using soft water, pure soap and many rinsings—and the economy made possible owing to our very moderate charges. If, like so many housewives, you are "budgeting" these days, phone one of our young ladies and allow her to explain to you the differences in our six family wash services—or stop any one of our courteous drivers.

WE CALL IN RICHMOND DISTRICT TUESDAY and FRIDAYS

If you will have laundry ready when driver calls, you will assist us in giving good service. If you only have driver call when phoned for, call us as early as convenient to insure prompt attention.

Phone Orders for Our Driver. Parcels may be left at Liberal Office Telephone 9, Richmond Hill

SEMI FINISHED TORONTO WET WASH LAUNDRY CO. LTD. LLOYD BROTHERS

175 OSSINGTON AVE.

Two New

SPARTONS

Within the Means of All

THE presentation of these remarkable new Spartons is probably the biggest event of the radio year. You naturally expect something extraordinary when Sparton announces new models—and you will not be disappointed. You will be delighted with the instruments themselves, and you will be truly amazed that such sets could be presented at such prices, with Sparton quality so outstandingly evident. Call and hear them.

The JUNIOR

Model 410

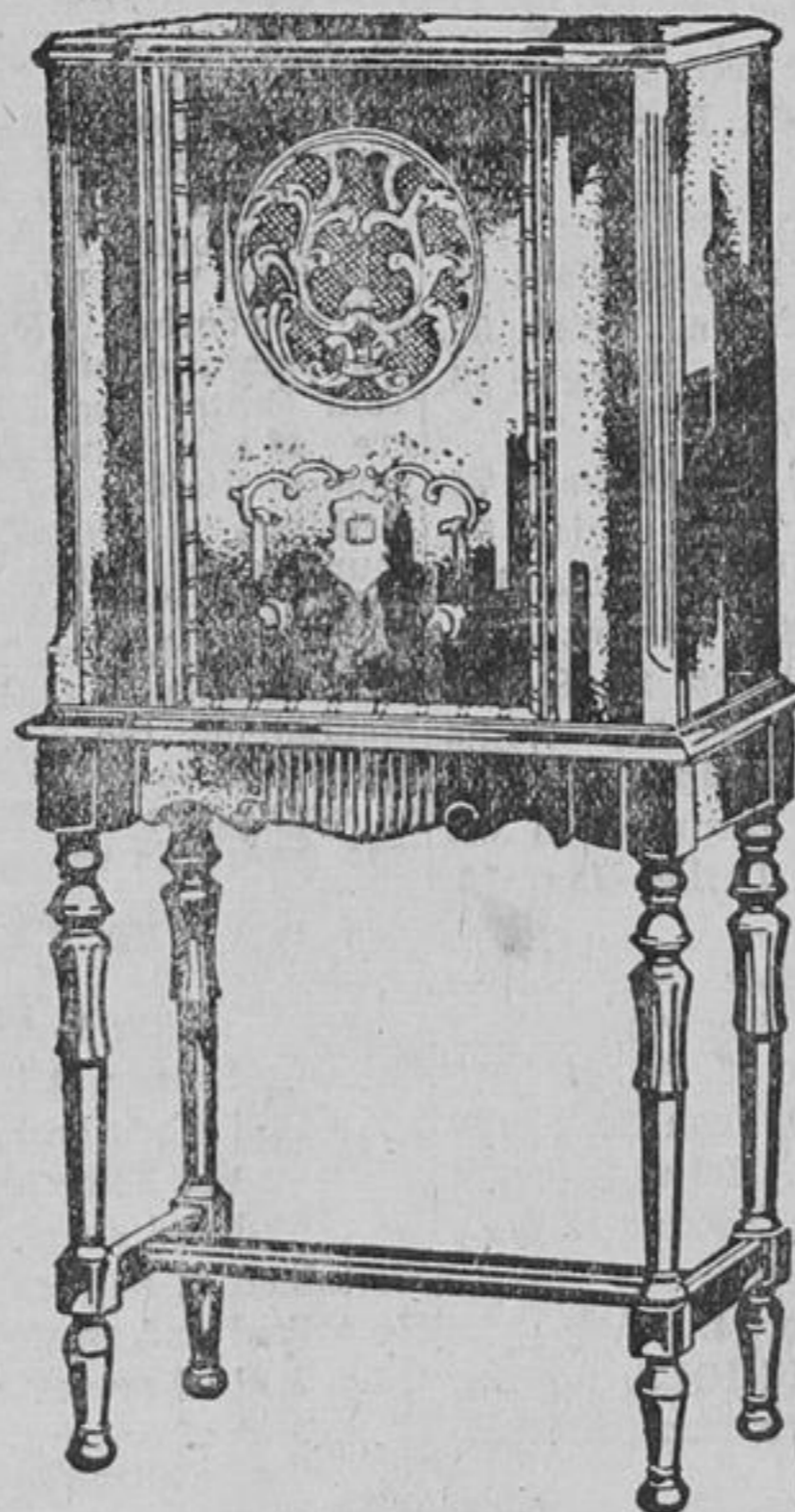


It is only natural that Sparton should do something unusual in the miniature radio field... and here it is. In the beautiful little cabinet there is a chassis on which Sparton is proud to place its name. It has a dynamic speaker and the unusual Sparton circuit that has made Sparton tone a tradition. It will be worth a visit for you to see and hear this extraordinary set.

Complete with 6 tubes

The JEWEL

Model 420



When you see this beautiful little console, you will agree that the name has been well chosen. When you hear it, you will recognize Radio's Richest Voice as it exists in all Spartons. This splendid little set has 2 screen-grid tubes, type 224, 1 type 280, and 1 type 227 tube, and 2 type 183 tubes for push-pull amplification. Ask about this Sparton.

Complete with 6 tubes

GARFIELD YEREX

Phone 116-M

Richmond Hill

Only SPARTON has the MUSICAL BEAUTY of

SPARTON RADIO

"Radio's Richest Voice"