

Have Your Tonsorial Requirements attended to while waiting for your car.
Martin's Barber Shop
 Right at The City Limits
 North Toronto.

All Kinds of Boot and Shoe Repairing Neatly Done
 Good Workmanship.
 Prompt Service.
 Shop in Winterton's Old Stand
 Yonge St.
GEO. KIDD
 Boot and Shoe Repairer.

CARTAGE & TRUCKING,
ALBERT CHAPMAN
 Local and Long Distance
 All calls promptly attended to
 Richmond Hill Ont.

Farm Is A Home and Community Spirit Counts

When a man buys a farm, he buys a home—a place to live. That is why the spirit of the community raises or lowers values. When a couple with a young family start out to buy a farm they give some thought to their children. Is the school efficient and up to date? Yes. Well, that is one inducement. How about churches? Well, there are two in the neighborhood and all the young people never really get together. More than that, there is a split now in one of the churches that is making things unpleasant.

Well, that is not too promising for harmony in the community. Politics will cause enough bad feelings at times without the churches dividing the neighborhood. And there is nothing that most people will avoid more carefully than a church feud.

Then, "What kind of a neighborhood is this anyway?" a prospective

purchaser will ask. "If I mind my own business will my neighbors mind theirs." "Is there ever anything going on here, or does one have to go to town in order to have a little fun?" "If a fellow tries to organize something to get things started, do they, say, 'Oh! if he wants to run the whole thing let him do it?'" "Is there a farmers' club of any kind—is there a Women's Institute—is there any young people's organization?"

Pertinent Questions.
 These questions do not relate to the farm directly, but they are pertinent when applied to the home. The home is the bigger and more important side of the question. In the fields crops may be grown—in the home boys and girls are growing up and the community will make a great big difference in the character of the young men and young women. The community spirit will affect the whole outlook of the young folks. It will narrow their horizon or broaden it; it will train them to face the world and look everybody in the eye, or it will engender a feeling of indifference and sometimes a sense of inferiority. The worst spirit that ever took root in a neighborhood is that which leads one to say "I am only a farmer."

There is no reason in the world why a farmer should not hold his head as high as anyone, and put his fingers in his vest if he wants to! If anyone looking for a farm finds a community with the right kind of spirit, "lots doing," good schools, active, harmonious churches, and a people who "hae a guid conceit o' themselves," he had better settle right down and enjoy life with the rest of them.

John Dunlop & Son
FLORISTS
 Richmond Hill - Ont.

We solicit orders for cut flowers for all occasions which will be promptly and cheerfully filled.

Report of S. S. No. 4, Markham for November
 IV Class—Elaine Beatty 75%, Robert Campbell 56%, George Baker 50% Ivan Bond 33%.
 Sr. III—Helen Hughes 72%, Murray Wideman 52%.
 Jr. III—Henry Robinson, Bessie Hughes, Nora Campbell, Lloyd Beatty Class II—Doris Knapp, Harold Doner, Beryl Farquharson, Harold Wideman, Herbert Nelson, Wallace Bond, Hazel Nelson, Lillian Horner, Jean Topper.
 Sr. I—David Hughes, Myrtle Horner.
 Jr. I—Alma Farquharson, Helen Nelson, Billie Campbell, Frank Bennet Jean Bond, Melville Baker, John Harbinson, Mary Harbinson.
 E. A. CASWELL, Teacher.

Estimates Cheerfully Given
 For work anywhere in the district.
J. J. CLEMENTS
 PAINTER AND DECORATOR
 Thornhill Ontario
 Phone Ring 33

W. N. Mabbett
Electrical Contractor
 Phone—Willowdale 96W
 POYNTZ AVENUE
 LANSING, ONT.

Government, Municipal and Corporation Bonds
 • Bought, Sold and • Exchanged
J. J. Deane
 Private Phone: 78 Woodbridge
 All business strictly confidential

The NEW CAR

INTRODUCING A FINE CAR IN THE LIGHT CAR FIELD

THIS entirely new car surpasses the accepted standards of light car accomplishment; sweeps aside all boundaries of price class; establishes a new standard of acceleration, speed, power and smoothness. Heretofore the following characteristics have been combined only in expensive cars.

Speed—better than a mile a minute.

Acceleration—5 to 25 miles per hour in high gear in 8½ seconds.

Endurance—this car will travel all day at 50 miles per hour without strain on motor or chassis.

Riding comfort—flexible springs and four hydraulic shock absorbers permit comfortable travel at high speed over the roughest road.

Roadability—this car's low center of gravity holds it snugly to the road on an unbanked turn even at high speed.

Power—in deep, loose sand with the front wheels cramped and from a dead stop, the car will turn in a tight circle, forward or reverse, without effort.

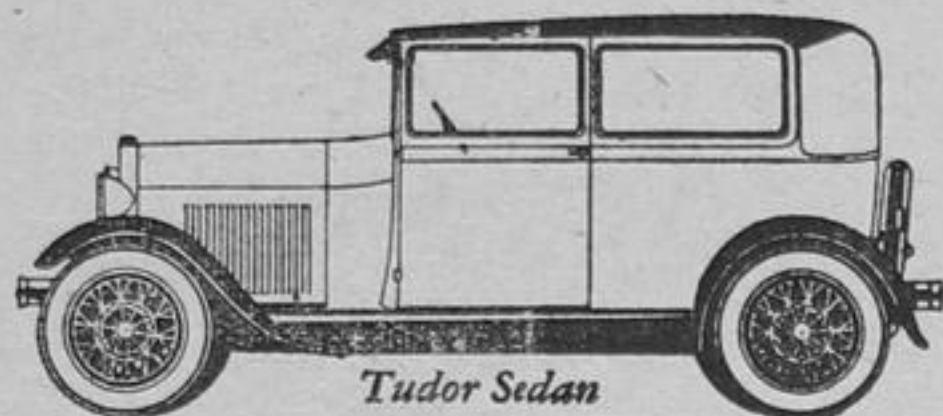
Effective braking—the instant response of mechanical, four-wheel brakes with dual control ensures positive braking for any emergency.

Positive steering control—A relaxed hand on the steering wheel will hold the car steady in loose sand and over bumpy roads. Turning radius 17 ft.

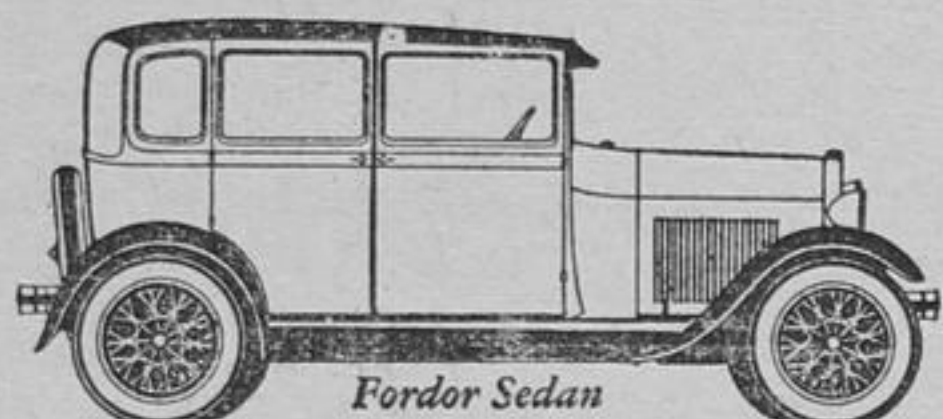
Economy—30 miles per gallon of gasoline, plus the well known economics of Ford car maintenance.

Appearance—coach work of pleasing proportions, tastefully finished in an extensive range of color combinations of durable satin lacquer.

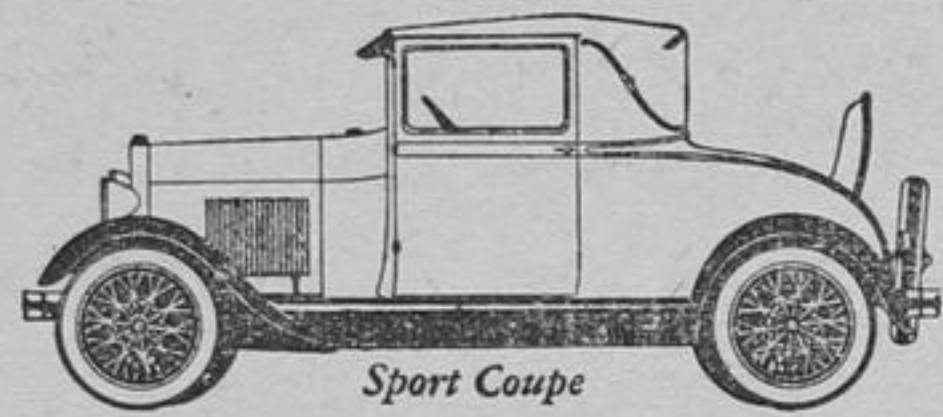
Quietness—Vibration in the engine is practically negligible. New final drive is exceptionally quiet. Double-ply anti-squeak tape, asphaltum treated fabric and hardwood blocks between body and frame minimize body noises.



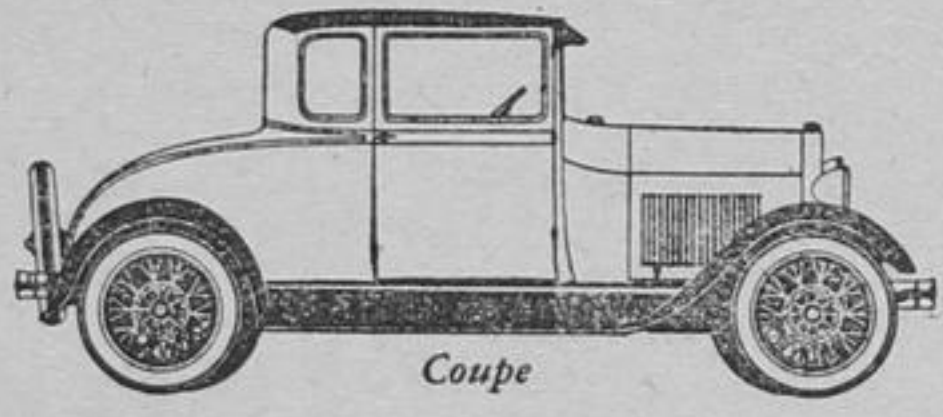
Tudor Sedan



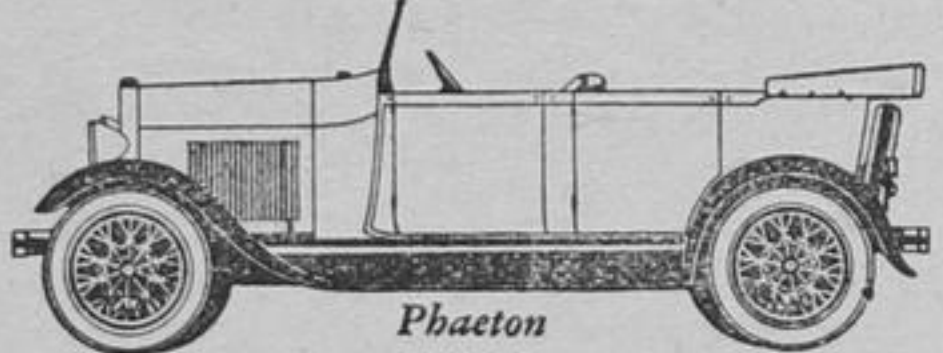
Fordor Sedan



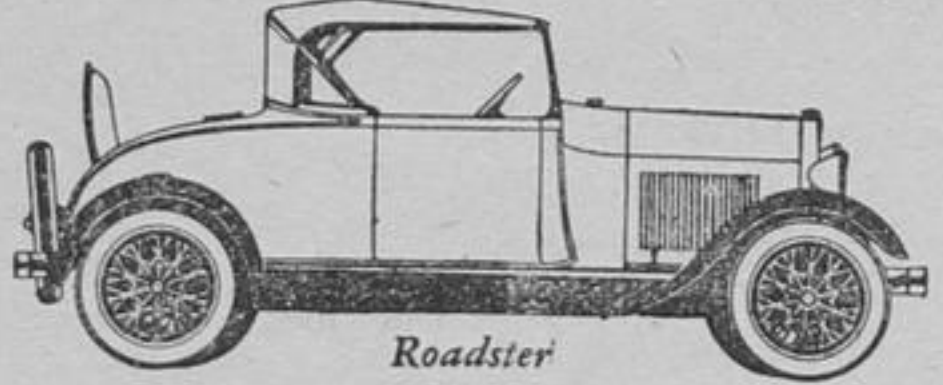
Sport Coupe



Coupe



Phaeton



Roadster

Engine—At 2200 revolutions per minute the new four cylinder engine develops 40 H. P. This revolution speed is low for such power and sets an entirely new standard for light car speed and acceleration, enduring quality and operating economy.

Engine lubrication—Combination of pump, splash and gravity feed thoroughly lubricates all frictional surfaces regardless of road grades.

Cooling system—Combination water pump and Ford thermo-siphon system doubly insures ample radiation. Engine warms up quickly but will not overheat.

Electrical system—The new Ford designed distributor is placed on top of engine permitting direct connection to spark plugs by means of short bronze bands. The single coil is protected by a waterproof case. Co-incidental lock on ignition circuit is theft proof. The powerful starting motor and dependable generator are both of Ford design.

Clutch and transmission—Patterned after the famous Lincoln, these units give an operating ease never before found in moderate priced cars. The nine plate multiple dry disc clutch and the selective transmission are designed to make shifting of gears remarkably easy and simple. Getaway, unexcelled by any car made today, is just one of the many advantages. Three speeds forward and one reverse. All gears are made of heat-treated chrome alloy steel. The only light car in which transmission shafts are mounted on ball and roller bearings.

Rear Axle—The axle shaft itself carries no weight as the ¾ floating principle places the weight of the car on the axle housing. Flexible roller bearings minimize rear wheel friction. A Torque Tube drive and spiral bevel gear are additional features.

Springs—Transverse semi-elliptic design. Relieved of all driving strain, they perform the sole function of cushioning road shocks. The transverse type of spring helps to prevent a large amount of frame distortion, makes four-wheel brake operation more efficient, gives easier steering and reduces unsprung weight.

Chassis lubrication—Alemite-Zerk pressure system.

Motor
 Make and Model—Ford "A"
 Four Cylinders—Bore 3½"; Stroke 4¼"
 Unit Construction
 Pump and Thermo-Siphon Cooling
 Pump, Splash and Gravity Lubrication
 Single Coil Distributor Ignition
 Sliding Gear (3 speed) Transmission
 Multiple 9 Plate Dry Disc Clutch
 Crankshaft—Statically and Dynamically Balanced
 High and Low Speed Jet Carburetor (hot-spot manifold)
 Aluminum Pistons
 Oil Indicator
 Two Blade Aeroplane Type Fan
 Bakelized Fabric Timing Gear
 Carbon Chrome Nickel Alloy Valves
 N. A. C. C. Rating 24.03 H. P.—Actual
 Developed H. P. 40 at 2200 R. P. M.

Equipment
 Automatic Windshield Wiper (Closed Cars)
 Rear View Mirror
 Speedometer
 Dash Light
 Gasoline Gauge
 Ammeter
 Combination Tail and Stop Light
 Motor Driven Horn

Performance
 60 Miles Per Hour
 40 Miles Per Hour in Second Gear
 Acceleration—5 to 25 M. P. H. in 8½ Seconds
 30 Miles Per Gallon Gasoline Consumption

Your local Ford dealer will give you prices and complete details—See him today.

Equipment
 Starter
 Foot Accelerator
 One Piece Windshield Sun Visor
 Thief Proof Ignition Lock
 4 Hydraulic Shock Absorbers
 Wide Range of Color Options

Chassis
 4 Wheel Brakes—Mechanical Internal Expanding Type with Automatic Equalizer
 Springs—Transverse Semi-Elliptic Drive—Torque Tube, Gears—Spiral Bevel
 Rear Axle—Three-Quarter Floating
 Full Crown One Piece Fenders
 Gravity Feed Fuel Tank
 Ignition Wires Enclosed in Flexible Steel Tubing
 Steering Gear (irreversible)—Worm and Sector Type
 Acorn Design, Nickel Plated Headlights
 5 One-Piece Steel Spoked Wheels
 17½" Steering Wheel
 Alemite-Zerk Pressure Lubrication
 Body and Chassis Insulated to Prevent Noise
 Wheel Base 103½ Inches
 Turning Radius—17 Feet
 Tire Size—30 x 4.5
 Road Clearance—9½ Inches



FORD MOTOR COMPANY OF CANADA, LIMITED, FORD, ONTARIO