

IMPORTATION IS PROHIBITED OF ALL ANIMALS FROM EIGHT STATES

Outbreak of Foot and Mouth Disease in Texas Leads to Action by Dominion Department of Agriculture.

Ottawa, Sept. 28.—The importation of all animals from Texas and seven other middle-western and southern states has been forbidden by the Federal Dept. of Agriculture owing to the outbreak of foot and mouth disease in Houston, Texas.

The states from which the importation is prohibited on account of this outbreak are: Texas, New Mexico, Colorado, Kansas, Oklahoma and Indian Territory, Arkansas, Louisiana, and Mississippi.

Information has been received by the Dept. of Agriculture that the outbreak has been confined by the United States authorities in Houston.

Indications are that the infection was introduced from South American countries, where the disease is prevalent, and it is believed that the Texas outbreak has no connection with the recent serious outbreak in California.

The Minister of Agriculture, on receipt of the advice, took immediate steps to prohibit the importation into Canada of "all live animals and poultry or parts thereof, all raw animals' products, manures and fodders that have within a period of two months prior to offer of entry, been in or through the state of Texas or any of the states contiguous."

H.R.H. PITCHES HAY ON ALBERTA RANCH

Joins the Hired Men in Building Stack—Riding, Walking and Shooting Rest of Day.

Calgary, Sept. 28.—The Prince of Wales is thoroughly enjoying his "rest." He rode the range before breakfast on Saturday, stacked hay until noon, shot ducks and pheasants on property owned by one of his neighbors, Rod McLean, during the afternoon, and then topped off the day with another horseback ride in the evening. Sunday morning he was up with the sun. Accompanied by members of his staff, he rode the range in the morning, and then shortly before noon returned in time to meet his dinner guests, Mayor G. H. Webster of Calgary, C. K. Howard of the passenger department, C.N.R.; W. S. Thompson, publicity department, C.N.R., and Mrs. and Miss W. L. Carlisle. The party then spent the remainder of the day walking along the river bank, enjoying a fine "constitutional."

"Topping" was the way the Prince described the week-end in reply to a remark of a friend.

The heir to the throne received his first taste of real farm labor on Saturday morning. He and his party arrived at the ranch just when the hands were in the middle of haying, so after breakfast on Saturday the Prince seized a fork and laid a foundation for a stack of hay which sprung up like a mushroom under the combined attacks of the Prince and his staff, assisted by the ranch hands. The sun shone warmly, and before an hour had elapsed the little streams of perspiration were pouring down the Prince's forehead and neck. He seemed to have enjoyed it, however, for he stuck to his task until the dinner bell went at noon.

FREIGHTER CLIFTON BELIEVED WRECKED

Steamer Glencairn Picks Up Part of Pilot House and Clock.

Cleveland, O., Sept. 28.—Any doubt of the sinking of the whaleback freighter Clifton, with her crew of 28, was dispelled with the finding in Lake Huron of a hatch cover and the forward end of a pilot house.

Goderich, Sept. 28.—The steamer Glencairn, Captain Dalton Hudson, on her course from Detour, ran into considerable wreckage about 8 o'clock last night 75 miles northwest of Goderich. There was quite a sea rolling, but the steamer cruised around for two hours, making search for any parts which might indicate from what boat it had come.

A part of the pilot house, to which was attached a carbon-burning searchlight and a brass clock, was hauled aboard and brought to port. Much broken lumber, evidently from some cabins, hatches and what looked like a lifebelt were sighted, but there was no evidence of small boats or signs of any bodies.

Communication with the owners of the overdue Clifton, not heard of since passing the Straits of Mackinaw on Sunday last, confirms the belief that the wreckage was from that steamer. With prevailing westerly winds, it is calculated that any wreckage which comes ashore will shortly be found along the Bruce Peninsula above Kincardine.

Sanguinary Battle is Raging in Honduras

A despatch from Tegucigalpa, Honduras, says:—A sanguinary battle between the Government forces and the rebels has been raging for the past 24 hours around Comayagua. No details have yet been received as to the exact situation of the contending armies.

Government troops have recaptured Santa Rosa, Copan and La Esperanza from the rebels.



Foreign Minister Dr. Edouard Benes of Czecho-Slovakia submitted to the disarmament committee of the League of Nations recently the draft of a protocol which is designed to outlaw all war and insure a reign of peace throughout the world.

RICH TREASURES IN ISLANDS OF ARCTIC

Resources of Far North Disclosed by Intrepid Explorer, Capt. Bernier.

A despatch from Quebec says:—The long discussed question as to whether the Dominion of Canada will ever benefit materially from the mineral riches of the northern islands in the vicinity of the Arctic Circle, many of which have been claimed for Canada in recent years by Captain J. S. Bernier, noted adventurer and Arctic explorer, would appear to be more or less definitely settled with the arrival of the "Arctic" at this port.

That there is every reason to be enthusiastic over the almost limitless possibilities in regard to the mineral development of the far north country, was the keynote of statements made by members of the expedition to the Canadian Press, the information being given out that, perhaps, in a short period of time, the agents of the Federal Government will take steps to open up and develop what are considered to be huge treasures in mineral ore.

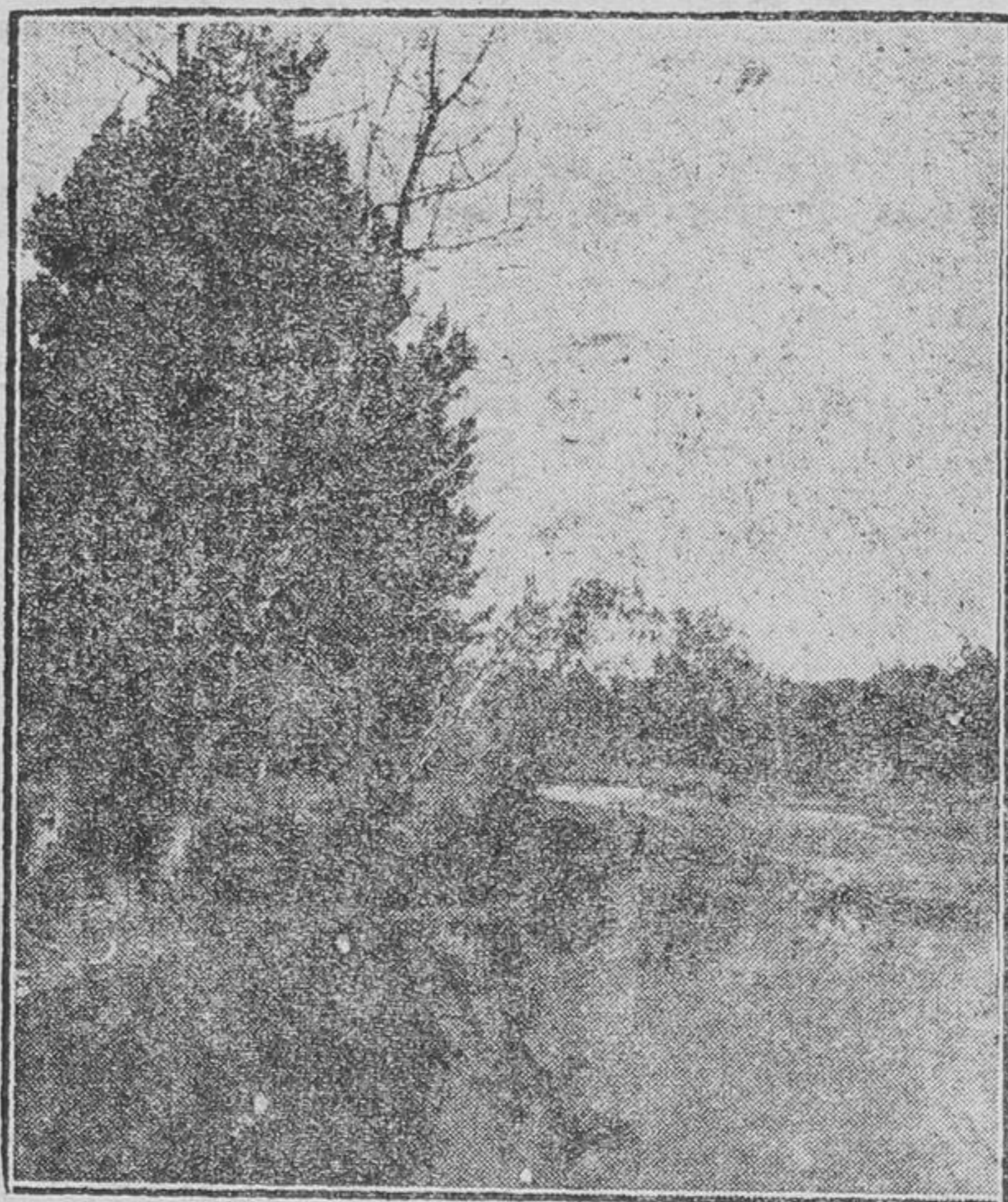
F. M. D. Henderson, of the Northwest Territories and Yukon branch of the Federal Department of the Interior, stated in the course of an interview, that although it would be a little premature to speak with exactitude as to the wealth of the northern islands, he and all concerned were strongly of the opinion that the resources there might prove to be of such a vast and wealthy nature as to astonish the civilized world.

The "Arctic" went as far north as Kane Basin, on the northeastern coast of Greenland.

Australia and Canada Conclude Trade Treaty

A despatch from Ottawa says:—It was announced by the Prime Minister on Thursday that the negotiations with Australia which have been carried on for several months by the Hon. James A. Robb, Acting Minister of Finance, and the Hon. Thomas A. Low, Minister of Trade and Commerce, have resulted in the conclusion of a trade agreement between the two Dominions. The agreement is of a reciprocal nature, granting the Dominion of Canada preference in many lines of export, in return for which Canada agrees to extend equally favorable treatment to various Australian products.

The great boon that the radio has become to settlers in the Northland is emphasized by Rev. W. Gladstone Walton, a missionary from Ungava, on the eastern shores of Hudson Bay. He states that along the shore many stations have been erected and that though mails are delivered in Ungava only from two to four times a year the settlers and traders are getting world news by radio as early as the readers of city newspapers.



Here is one of the many beautiful rural scenes on the Prince of Wales' ranch in Alberta.

BRITAIN ATTACHES GRAVE SIGNIFICANCE TO TURK RAIDS IN IRAK

A despatch from London says:—Apprehension is expressed in British official circles that grave consequences may ensue because of alleged Turkish incursions into Irak. Lord Parmoor brought the controversy before the League of Nations and it is now a subject of correspondence between London and Ankara.

The Turkish and British claims are mutually contradictory and wholly divergent. Consequently, long parleys may take place before the atmosphere is cleared. The British fear that in the meantime an incident may occur involving the loss of human life, thereby precipitating a crisis of the first order.

The British view is that under the

terms of the treaty of Lausanne, Turkey promised to abide by the status quo prevailing at the time the treaty was signed pending settlement by the settlement by the Council of the League of the frontier dispute.

The Turks dispute the British interpretation of the Lausanne treaty regarding the boundaries between Irak and Mosul, and declare that Turkey has never ceased to maintain her rights in the Mosul territory, which her troops have entered. This claim, if justified, would vindicate Turkey's incursions into the disputed territory. As neither nation, however, at this juncture is disposed to concede the other's position with reference to the Lausanne treaty, the controversy may be prolonged.

RAIN IN WEST SENDS WHEAT PRICE SOARING

Heavy Downpour Sets Back Harvest—Boat Traffic on Increase.

A despatch from Winnipeg says:—While rain was falling on Friday all over Western Canada, wheat was soaring on the Winnipeg market. The advance was sensational. The market for October wheat closed on Thursday at \$1.41½. On Friday it jumped up as high as \$1.47½, and closed at \$1.46½. This is almost 50 cents a bushel higher than a year ago to-day, when the best the farmer could get was 97 cents a bushel.

The market was influenced largely by the weather. The rainfall all over the country is a veritable downpour. In twenty-four hours 3.40 inches of rain has fallen at Broadview, Sask. At Winnipeg an inch of rain had fallen up to 7 o'clock Friday morning, and there has been a downpour all day.

It means that all harvesting operations will be suspended three of four days. Even if the weather should turn and the country be favored with the best of dry weather, it is feared the grade will be lowered as a result of the soaking the sheaves have had, and even more serious loss may come from sprouting if the rain should be followed by warm, calm days.

From this break in the threshing will follow a slump in the grain

movement to market, which was just getting well under way. On Thursday shipments totalled nearly four and a half million bushels, which was almost equal to the movement this date a year ago.

A despatch from Ottawa says:—Canal statistics compiled by the Dominion Bureau of Statistics show an increase in the quantity of wheat which passed through the St. Lawrence, Welland and Sault Canals during August of the present year, as compared with August, 1923. Wheat shipments through the Sault Ste. Marie Canals were heavier by 2,432,428 bushels, but other grains and flour were lighter than in August, 1923.

Total traffic on the Welland Canal last month was heavier than in August, 1923, by 81,107 tons, due almost entirely to an increase in wheat of 159,682 tons, or 5,322,700 bushels.

Wheat shipments through the St. Lawrence canals were heavier than during August, 1923, by 117,393 tons, or 3,913,100 bushels.

Monday, November 10th, "Day of Thanksgiving"

A despatch from Ottawa says:—The King's proclamation declaring Monday, November 10th (Armistice Day), "as a day of general thanksgiving throughout Canada," is published in this week's issue of the Canada Gazette.



Mr. Asquith, aged Liberal and former premier of Britain, celebrated his 72nd birthday recently at his country home near Abingdon, England. He is shown with Mrs. Asquith on the grounds of the estate.

The Week's Markets

TORONTO.

Man. wheat—No. 1 North, \$1.53½; No. 2 North, \$1.49½.
Man. oats—No. 2 CW, 64½c; No. 3 CW, 63½c; extra No. 1 feed, 63½c; No. 1 feed, 62½c; No. 2 feed 60½c.
All the above c.i.f., bay ports.
Am. corn, track, Toronto—No. 2 yellow, \$1.30.

Millfeed—Del., Montreal freights, bags included; Bran, per ton, \$27; shorts, per ton, \$29; middlings, \$35; good feed flour, per bag, \$2.05.

Ont. oats—No. 3 white, 48 to 50c.
Ont. wheat—No. 2 winter, \$1.16 to \$1.20; No. 3 winter, \$1.14 to \$1.18; No. 1 commercial, \$1.11 to \$1.15, f.o.b. shipping points, according to freights.

Barley—Malting, 79 to 82c.
Buckwheat—No. 2, 90c.
Rye—90 to 93c.

Ont. flour—New, ninety per cent. pat., in jute bags, Montreal, prompt shipment, \$5.75; Toronto basis, \$5.75; bulk seaboard, \$5.50.

Manitoba flour—First pats., in jute sacks, \$8 per bbl.; 2nd pats, \$7.50.

Hay—No. 2 timothy, per ton, track, Toronto, \$14; No. 3, \$12.50.

Straw—Carlots, per ton, \$9.50.

Screenings—Standard, recleaned, f.o.b. bay ports, per ton, \$22.50.

Cheese—New, large, 19c; twins, 19½c; triplets, 20c; Stiltons, 21 to 22c. Old, large, 23 to 24c; twins, 24 to 25c; triplets, 25 to 26c.

Butter—Finest creamery prints, 38 to 39c; No. 1 creamery, 36 to 37c; No. 2, 34 to 35c; dairy, 28 to 30c.

Eggs—Extras, fresh, in cartons, 45c; extra, loose, 43c; firsts, 38c; seconds, 30 to 31c.

Live poultry—Hens, over 5 lbs., 20c; do, 4 to 5 lbs., 17c; do, 3 to 4 lbs., 15c; spring chickens, 2 lbs. and over, 25c; roosters, 12c; ducklings, 4 to 5 lbs., 18c.

Dressed poultry—Hens, over 5 lbs., 26c; do, 4 to 5 lbs., 22c; do, 3 to 4 lbs., 18c; spring chickens, 2 lbs. and over, 30c; roosters, 15c; ducklings, 4 to 5 lbs., 25c.

Beans—Canadian, hand-picked, lb., 6½c; primes, 6c.

Maple products—Syrup, per imp. gal., \$2.50; per 5-gal. tin, \$2.40 per gal.; maple sugar, lb., 25 to 26c.

Honey—60-lb. tins, 13½c per lb.; 10-lb. tins, 13½c; 5-lb. tins, 14½c; 2½-lb. tins, 15c.

Smoked meats—Hams, med., 27 to 29c; cooked hams, 40 to 42c; smoked rolls, 18 to 20c; cottage rolls, 21 to 24c; breakfast bacon, 23 to 27c; special brand breakfast bacon, 29 to 31c; backs, boneless, 33 to 35c.

Cured meats—Long clear bacon, 50 to 70 lbs., \$17.50; 70 to 90 lbs., \$16.80; 90 lbs. and up, \$15.50; lightweight rolls, in barrels, \$33; heavyweight rolls, \$27.

Lard—Pure, tierces, 17½ to 18c; tubs, 17½ to 18½c; pails, 18 to 18½c; prints, 20¼ to 20½c; shortening, tierces, 16 to 16½c; tubs, 16½ to 17c; pails, 17 to 17½c; prints, 18 to 18½c.

Export steers, choice, \$7 to \$7.50; butcher steers, choice, \$5.50 to \$6; do, good \$5 to \$5.25; do, com. to fair, \$3 to \$4.75; butcher heifers, choice, \$5.25 to \$5.75; do, good, \$4.75 to \$5; do, com., \$3.50 to \$4.25; butcher cows, choice, \$4 to \$4.50; do, fair, \$3 to \$3.75; do, canners and cutters, \$1.50 to \$2.50; butcher bulls, good, \$3.50 to \$4.25; do, fair, \$3 to \$3.50; do, bologna, \$2.50 to \$3; feeding steers, good, \$5.25 to \$5.50; do, fair, \$4.50 to \$5; stockers, good, \$4.50 to \$5; do, fair, \$3.50 to \$4; calves, choice, \$10 to \$11; do, med., \$8 to \$10; do, grassers, \$4 to \$5; milch cows, choice, \$75 to \$90; springers, choice, \$80 to \$100; plain cows, \$45 to \$65; good light sheep, \$7.50 to \$8.50; heavies and bucks, \$4 to \$5; culls, \$2 to \$4; good ewe lambs, \$11.50 to \$12; bucks, \$9.50 to \$10; culls, \$8 to \$9; hogs, fed and watered, \$9.85 to \$10.10; do, f.o.b., \$9.25 to \$9.50; do, country points, \$9 to \$9.25; do, off cars, \$10.25 to \$10.50; do, selections, fed and watered, \$10.85 to \$11.10.

MONTREAL.

Oats, Can. west., No. 2, 70c; do, No. 3, 69½c; extra No. 1 feed, 68½c. Flour, Man. spring wheat pats., 1sts, \$8; seconds, \$7.50; strong bakers', \$7.30; winter pats., choice, \$6 to \$6.10; rolled oats, bag 90 lbs., \$3.55 to \$3.65. Bran, \$7.25. Shorts, \$9.25. Middlings, \$15.25. Hay, No. 2, per ton, car lots, \$16.50 to \$17.

Cheese—Finest wests., 17¼ to 17½c; finest easterns, 17 to 17½c.

Butter—No. 1 pasteurized, 36½c; No. 1 creamery, 35½c; seconds, 35c.

Eggs—Storage extras, 42c; storage firsts, 36c; storage seconds, 30c; fresh extras, 48c.

USED FLAGGED MAP TO SHOW ROYAL ROUTE

Canadian National Agents in Britain Cleverly Exploiting Trip of the Prince.

A despatch from London says:—The Canadian National Railways publicity department is cleverly exploiting the Prince of Wales' journey over the National Railways. In the windows of over three hundred agents in England and Scotland a large map is placed, flagged along the route to indicate the chief points through which the prince's train passes, a large flag is waved daily to indicate the location of the prince's train.

Crowds are to be seen continuously outside the windows studying the representation with interest and incidentally acquiring a knowledge of Canadian geography.

Sincerity and common sense make a passport anywhere.