

# CHEVROLET

—meets all the Standards by which a car is judged

BY whatever standard you judge a car—whatever qualifications you demand—Chevrolet can meet your closest scrutiny.

Chevrolet economy is an established fact. No other car can be run so inexpensively. Chevrolet is the world's lowest-priced, fully-equipped car.

Chevrolet dependability is proven by thousands of owners every day, in all kinds of weather, over all kinds of roads. Chevrolet appearance and construction set new standards among low-priced cars.

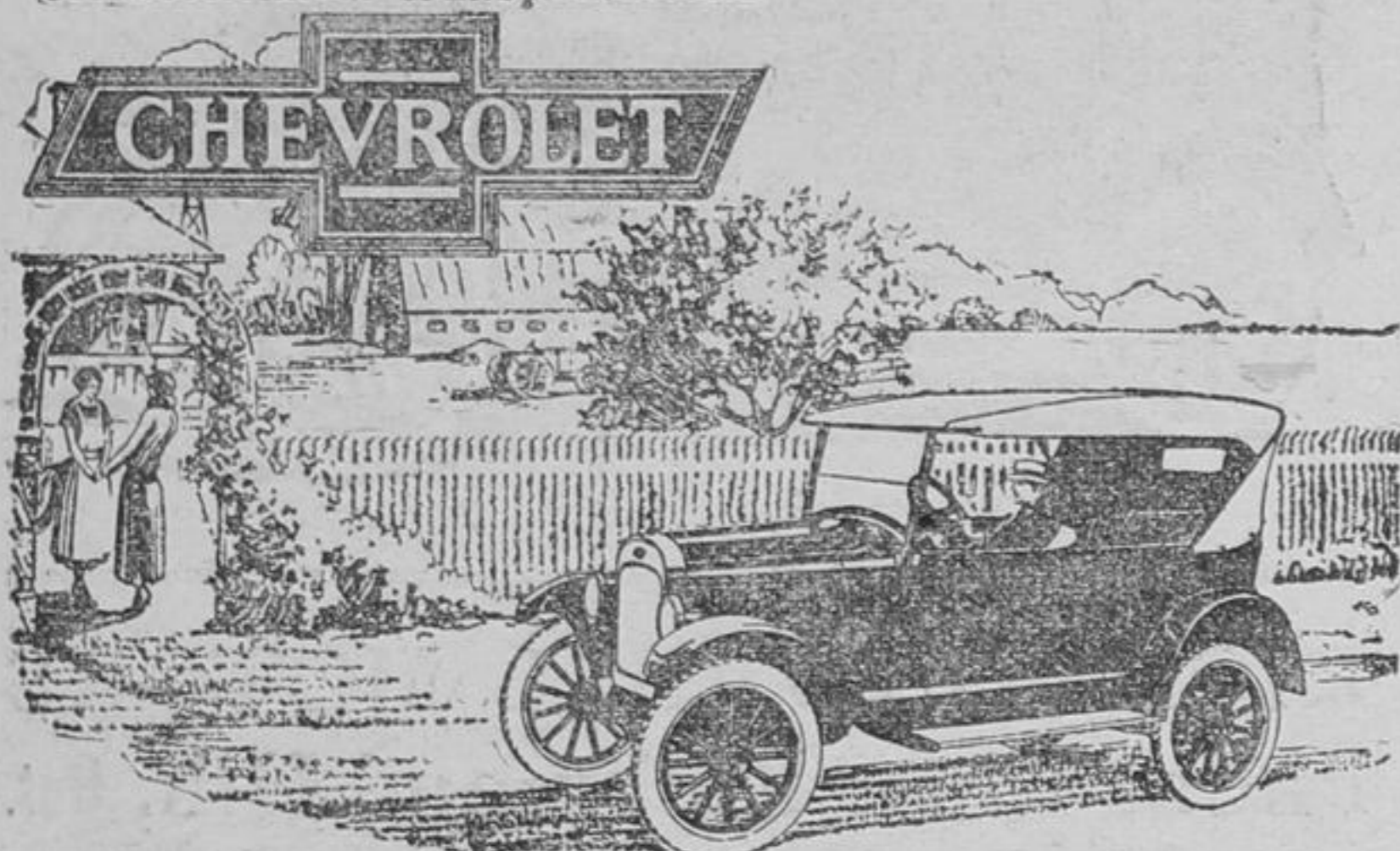
Chevrolet Service is the final factor in determining the value of the car. Wherever you travel, throughout the length and breadth of the Dominion, Chevrolet service is close at hand. There are Chevrolet Dealers and Service Stations everywhere, where you can be sure of getting genuine Chevrolet parts and expert service by men who thoroughly understand the car.

Weigh all the evidence carefully—and you will more fully appreciate Chevrolet value. Ask us for a demonstration.

Ask us about the GMAC Deferred Payment Plan

C-816

For Economical Transportation.



P. C. HILL

Dealer - Richmond Hill, Ont.

## The Week's Markets

### TORONTO.

Man. wheat—No. 1 North., \$1.10; No. 3 North., \$1.03 1/2.  
Man. oats—No. 3 CW, 42c; No. 1, 40 1/2c.  
Man. barley—Nominal.  
All the above c.i.f., bay ports.  
Ont. barley—65 to 70c.  
Am. corn—No. 2 yellow, 95c.  
Ont. Rye—74 to 78c.  
Peas—No. 2, \$1.45 to \$1.50.  
Millfeed—Del., Montreal freights,

bags included: Bran, per ton, \$25; shorts, per ton, \$27; middlings, \$33; good feed flour, \$1.90.

Ont. wheat—No. 2 white, 99c to \$1.03, outside.

Ontario No. 2 white oats—39 to 41c.

Ont. corn—Nominal.

Ont. flour—Ninety per cent. pat., in jute bags, Montreal, prompt shipment, \$4.60; Toronto basis, \$4.60; bulk seaboard, \$4.25.

Man. flour—1st pats., in jute sacks, \$6 per bbl.; 2nd pats., \$5.60.

Hay—Extra No. 2 timothy, per ton, track, Toronto, \$14.50; No. 2, \$14.50; No. 3, \$12 to \$14; mixed, \$10 to \$12; lower grades, \$10 to \$12.

Straw—Carlots, per ton, \$9.50.

Cheese—New, large, 16 1/2 to 17c; twins, 17 to 18c; triplets, 18 to 19c; Stiltons, 20c. Old, large, 22 to 23c; twins, 23 to 24c; triplets, 24 to 25c.

Butter—Finest creamery prints, 33 to 34c; No. 1 creamery, 32 to 33c; No. 2, 29 to 31c; dairy, 28 to 30c.

Eggs—Extras, fresh, in cartons, 30 to 31c; extra, loose, 28c; firsts, 26c; seconds, 23 to 24c.

Live poultry—Chickens, 3 to 4 lbs., 25c; hens, over 5 lbs., 26c; do, 4 to 5 lbs., 24c; do, 3 to 4 lbs., 15c; spring chickens, 4 lbs. and over, 25c; roosters, 18c; ducklings, over 5 lbs., 26c; do, 4 to 5 lbs., 24c.

Dressed poultry—Chickens, 3 to 4 lbs., 30c; hens, over 5 lbs., 28c; do, 3 to 4 lbs., 18c; spring chickens, 4 lbs. and over, 32c; roosters, 22c.

Beans—Can., hand-picked, lb., 6 1/2c; primes, 6c.

Maple products—Syrup, per imp. gal., \$2.50; per 5-gal. tin, \$2.40 per gal.; maple sugar, lb., 25 to 26c.

Honey—60-lb. tins, 11 to 11 1/2c per lb.; 10-lb. tins, 11 to 12c; 5-lb. tins, 11 1/2 to 12c; 2 1/2-lb. tins, 12 1/2 to 13c; comb honey, per doz., No. 1, \$3.75 to \$4; No. 2, \$3.25 to \$3.50.

Smoked meats—Hams, med., 23 to 24c; cooked hams, 34 to 36c; smoked rolls, 17 to 18c; cottage rolls, 18 to 20c; breakfast bacon, 21 to 25c; special brand breakfast bacon, 28 to 30c; backs, boneless, 28 to 33c.

Cured meats—Long clear bacon, 50 to 70 lbs., \$18.50; 70 to 90 lbs., \$13 90 lbs. and up, \$17; lightweight rolls, in barrels, \$37; heavyweight rolls, \$32.

Lard—Pure tierces, 14 1/4 to 15 1/4c; tubs, 15 to 15 1/2c; pails, 15 1/2 to 16c; prints, 18 to 18 1/2c; shortening, tierces, 14 to 14 1/2c; tubs, 14 1/2 to 15c; pails, 15 to 15 1/2c; prints, 16 1/2 to 17c.

Heavy steers, choice, \$8 to \$8.50; butcher steers, choice, \$7 to \$7.75; do, good, \$6.25 to \$6.75; do, med., \$5.25 to \$6; do, com., \$4.50 to \$5; butcher heifers, choice, \$7 to \$7.50; do, med., \$5 to \$5.75; do, com., \$4.50 to \$4.75; butcher cows, choice, \$5.25 to \$6.25; do, med., \$3.50 to \$4.50; butcher bulls, \$4.50 to \$5.50; bolognas, \$2.50 to \$3.50; canners and cutters, \$1.50 to \$2; feeding steers, choice, \$6 to \$6.75; do, fair, \$4 to \$5; milkers, springers, choice, \$75 to \$90; stockers, choice, \$4.55 to \$5.25; do, fair, \$3.75 to \$4.20; calves, choice, \$9 to \$10; do, med., \$7 to \$7.50; do, com., \$4.50 to \$5.50; lambs,

choice ewes, \$15.50 to \$16; do, bucks, \$13 to \$13.50; do, culls, \$8 to \$9; spring lambs, each, \$8 to \$15; sheep, light ewes, \$8 to \$9.50; do, culls, \$5 to \$5.50; hogs, fed and watered, \$7.75; to \$8; do, f.o.b., \$7.25 to \$7.50; do, country points, \$7 to \$7.25; do, off cars (long haul), \$8.15 to \$8.40; do, select, \$8.50 to \$8.80.

### MONTREAL.

Oats, Can. West. No. 2, 51 to 52c; do, No. 3, 49 to 50c; extra No. 1 feed, 48 to 48 1/2c; No. 2 local white, 44 to 45c. Flour, Man. spring wheat pats., 1sts, \$6.10; 2nds, \$5.60; do, strong bakers, \$5.40; winter pats., choice, \$5.55 to \$5.65. Rolled oats, bag 90 lbs., \$2.80 Bran, \$24.25. Shorts, \$26.25. Middlings, \$32.25. Hay, No. 2, per ton, car lots, \$16.

Cheese, finest Westerns, 14 1/2c; finest Easterns, 13 1/2c. Butter, No. 1, pasteurized, 29 1/2c; No. 1 creamery, 29c; 2nds, 28c. Eggs, fresh, specials, 32 to 33c; fresh, extras, 29 to 30c; fresh firsts, 26 to 27c. Potatoes, per bag, car lots, \$1.40 to \$1.45.

Good heavy steers, \$7; fairly good calves, \$5.25; do, com. and med., \$4 to \$4.75; butcher hogs, \$8 to \$8.25; selects, \$8.75; sows, \$5.50.

### SHIPS MENACED BY ICE IN LAKE SUPERIOR

#### Twenty Freighters Are Still Blocked in Flocs With Northwest Gale.

A despatch from Duluth says:—Eight freighters and two passenger ships had made port here through the upper Lake Superior ice jam on Friday, but there was no material lessening in the blockade.

With a northwest gale raging unabated, vessel agents hold no immediate hope for a break-up in the blockade, which now directly affects 53 lake freighters.

Abatement of the northwest gale released the pressure on the ice jam, and three tugs were trying on Friday to assist the approximately twenty freighters scattered along the six-mile front of the blockade.

The Huronic suffered no damage, nor was she ever in any immediate danger from the heavy pressure imposed by the thick flocs, said her skipper, Captain A. M. Wright.

With the exception of the men passengers and members of the crew, who were short of tobacco, no one was seriously inconvenienced.

### Epidemic of Cholera Spreading in India

A despatch from Allahabad says:—There have already been 10,000 deaths from cholera in Bihar this year and the epidemic is spreading. In Champaran, the most affected district, there were 1,000 deaths last week. Darbhanga, Mizaffarpur and Shahabad and Saran are also greatly affected, and the disease has recently become epidemic in Patna and Gaya.



## "SEAMAN-KENT Hardwood Floors sold that house"

PERHAPS no single feature of a house recommends it so highly as "Hardwood Floors Throughout". Hardwood Floors make a house more attractive—more sanitary—easier to maintain. Consequently hardwood floors make it easier to sell. Seaman-Kent Hardwood Flooring is so perfectly matched—so exact in grading—that it is the standard flooring of Canada. There are undoubtedly rooms in your home which would be brighter, cleaner, prettier, if they had hardwood floors. Measure them up. Give us the sizes and we will tell you how little it would cost to lay hardwood floors.

## SEAMAN-KENT HARDWOOD FLOORING

L. INNES & SONS

RICHMOND HILL

Phone 87J  
13 R3

DISTRIBUTORS

D16



### Is next door to each customer

A clever manufacturer in a small town found he often lost repeat orders from distant customers because he had no one on the ground to get them. So he supplied each of these good customers with a card reading:—

The H. W. Marks Co. of Deepdale is authorized to telephone orders to The Blank Mfg. Co., Springville, and deduct the cost of the message from our next invoice. Call Springville 156. Our telephone service is organized to give you as good service as if we were next door to your office.

(Signed) John L. Black.  
He says it works fine. Try it.



Every Bell Telephone is a Long Distance Station.

## EXCEPTIONAL RIDING COMFORT

Owners continue to comment on the marked riding comfort of Dodge Brothers Motor Car.

Increased chassis length, low-slung body and generous seat depth have much to do with this.

Primarily, however, it must be accredited to the greater buoyancy of the new spring equipment. The rear springs are ten inches longer, and underslung.

C. M. Palmer & Son

