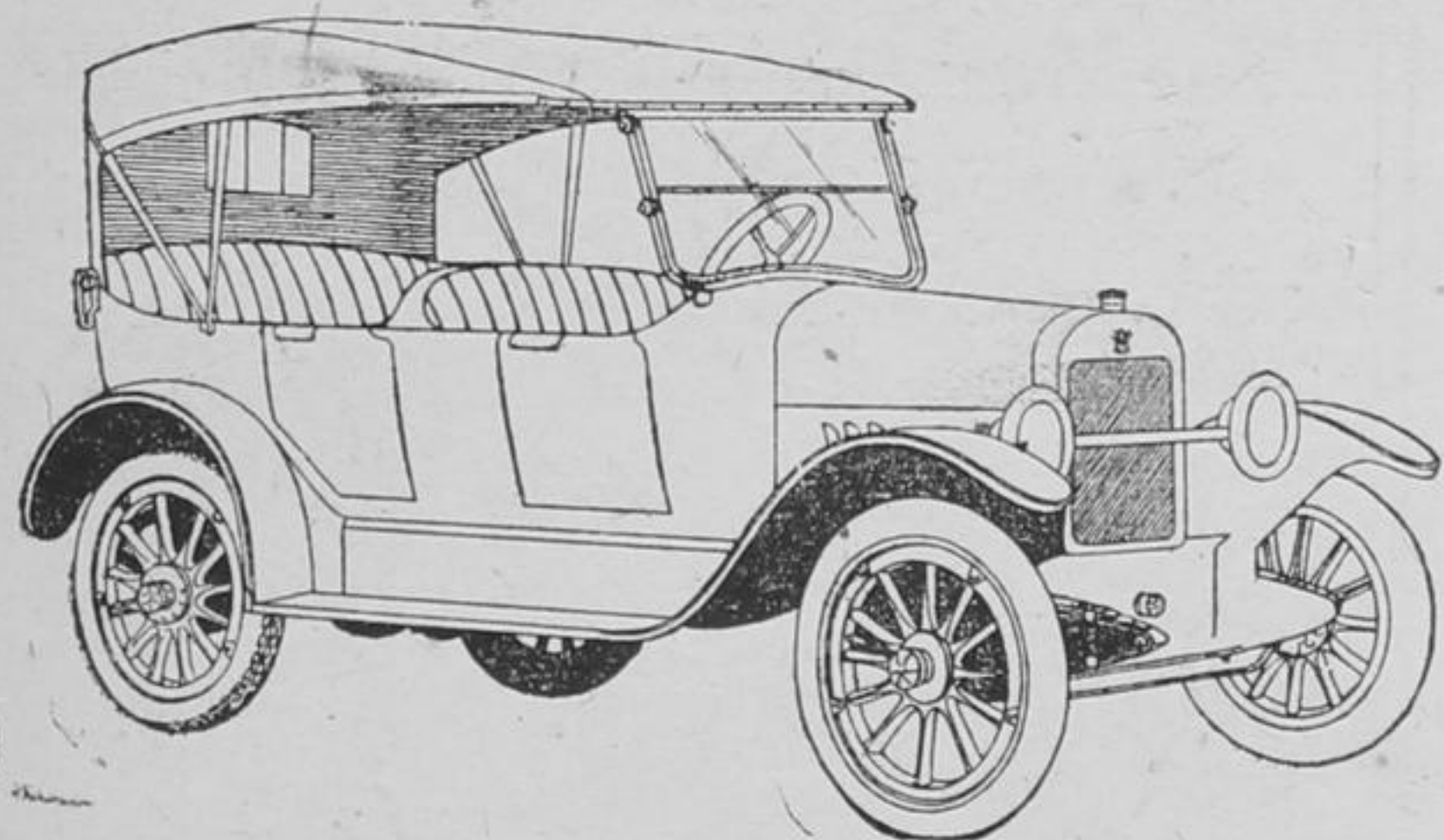


BRISCO



MADE IN CANADA

The Half Million Dollar Motor—Less Gas—More Mileage

- 3 PASSENGER ROADSTER
- 5 PASSENGER TOURING
- 5 PASSENGER SPECIAL

PROMPT SERVICE

Findlay & Brillinger

Phone Nos. 34 and 21 • Thornhill

1920--FORD--1920

Have you seen the 1920 Ford Car? Some of the added improvements are—one man top, deep leather seats, ventilating wind shield, re-inforced radius rod, demountable rims, non skid tires, tire carrier on rear, instrument board, electric lighting and starter.

The price of the Runabout is \$710, and the Touring Car \$740 f. o. b. Ford, Ont. and do not include war tax.

The Electric Starting and Lighting equipment is optional and is supplied at an additional cost of \$100.

WE ADVISE PLACING ORDERS EARLY.

G. A. M. Davison, Dealer, Unionville

A. E. Glass, Salesman, Richmond Hill

McKENZIE BROS.

Dealers in all kinds of Builders Supplies
Coal, Wood and Cement

Flour and Feed

WILLOWDALE

ONTARIO

LOOK! OIL BARGAINS

Polarine Oils for Tractors, Trucks and Motors
at a Substantial Reduction.

A car of Oils which I purchased before the advance in price, is due here early in April. I will sell this as follows:--

Polarine Motor Oil \$1.00 per gallon in barrels.

Heavy Polarine (Tractor Oil) \$1.00 per gallon, in barrels.
(The price of these oils today is \$1.25 per gal.)

A discount of 15 per cent. will be allowed on these prices if the oil is taken direct from the car, and I will deliver free of charge within a radius of 10 miles from Unionville.

10 lbs. of Cup Grease for \$1.25.

Phone or write your order at once.
First come, first served.

I also have a stock of Tires secured before the advance, which I will sell at last year's prices.

G. A. M. DAVISON

FORD DEALER

UNIONVILLE GARAGE

Newton Brook

Community Church
Methodist

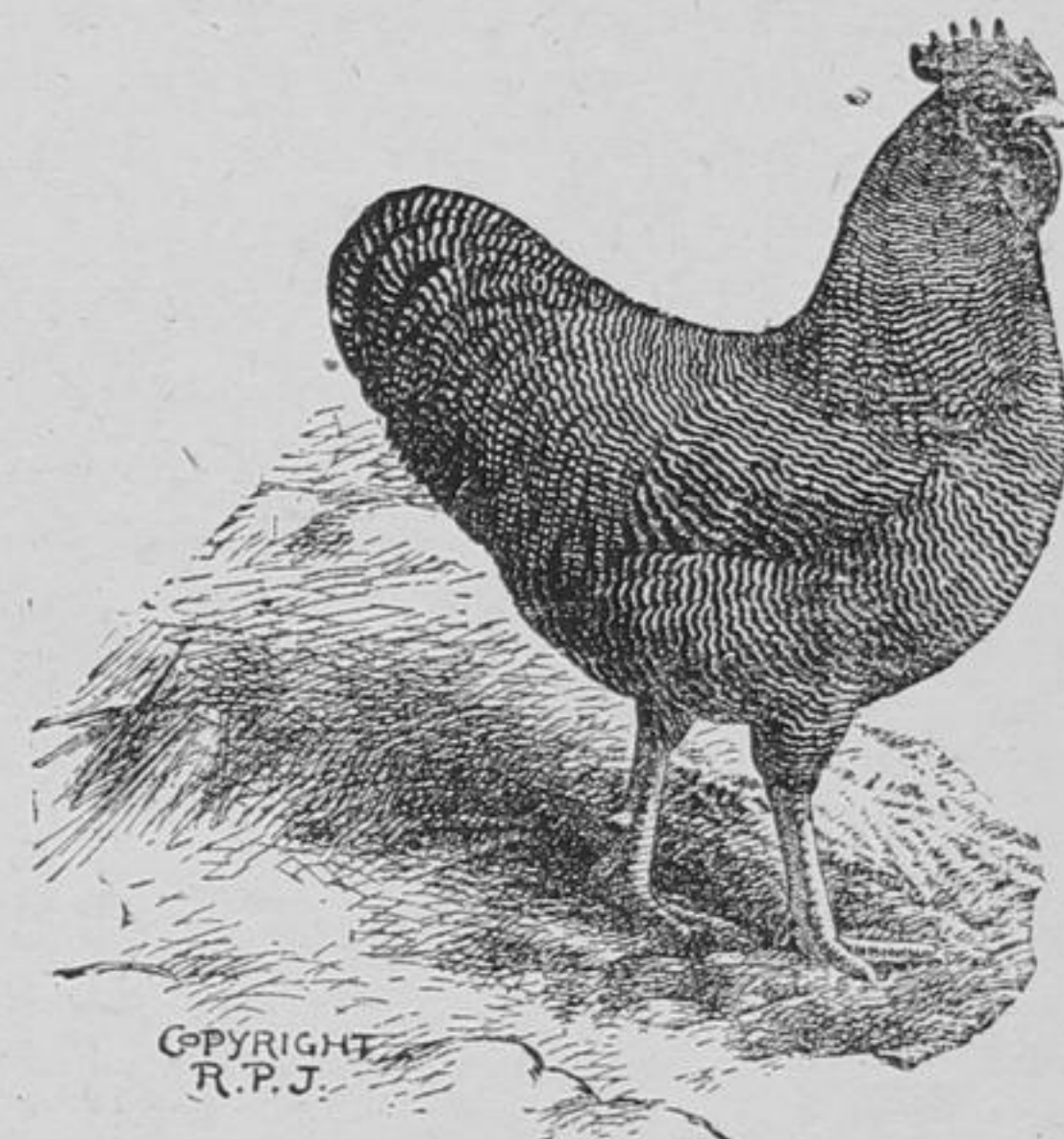
Pastor—REV. P. A. JOURDAN

**Sand, Gravel,
Tile and Brick**

The Maple Sand, Gravel and Brick Company, Ltd. have on hand for sale. Cement drain tile, 3, 4, 5, 6 and 8 in. Culvert tile 12, 15, 18 and 20 inch (30 inches in length)

Also Cement Brick.
Sand or Gravel sold by the load or in car lots.

T. COUSINS,
Pres. and Mgr.,
Maple.



COPYRIGHT
R.P.J.

EGGS FOR HATCHING

W. J. BILLING'S Imperial Ringlet Barred Plymouth Rocks, bred-to-lay strains. Hens that lay 242 to 256 eggs a year. I use trap nests only. My stock has stood the test and is still in the lead as instanced by the many first prizes won in 1919 and 1920. Also pure bred White Pekin Ducks. My birds are all kept in separate pens.

PRICES FOR SETTING OF 15

Imperial Ringlet Barred Rocks, per setting	\$3 two for \$5
Partridge Wyandottes	3 " 5
Silver Lace Wyandottes	3 " 5
White Wyandottes	3 " 5
Butter cup	3 " 5
White Orpingtons	5 " 8
Black Orpingtons	5 " 8
Blue Orpingtons	10 " 8
Rose Comb Rhode Island Reds	2
Pekin Ducks (Mammoth) per setting of 11	1.50

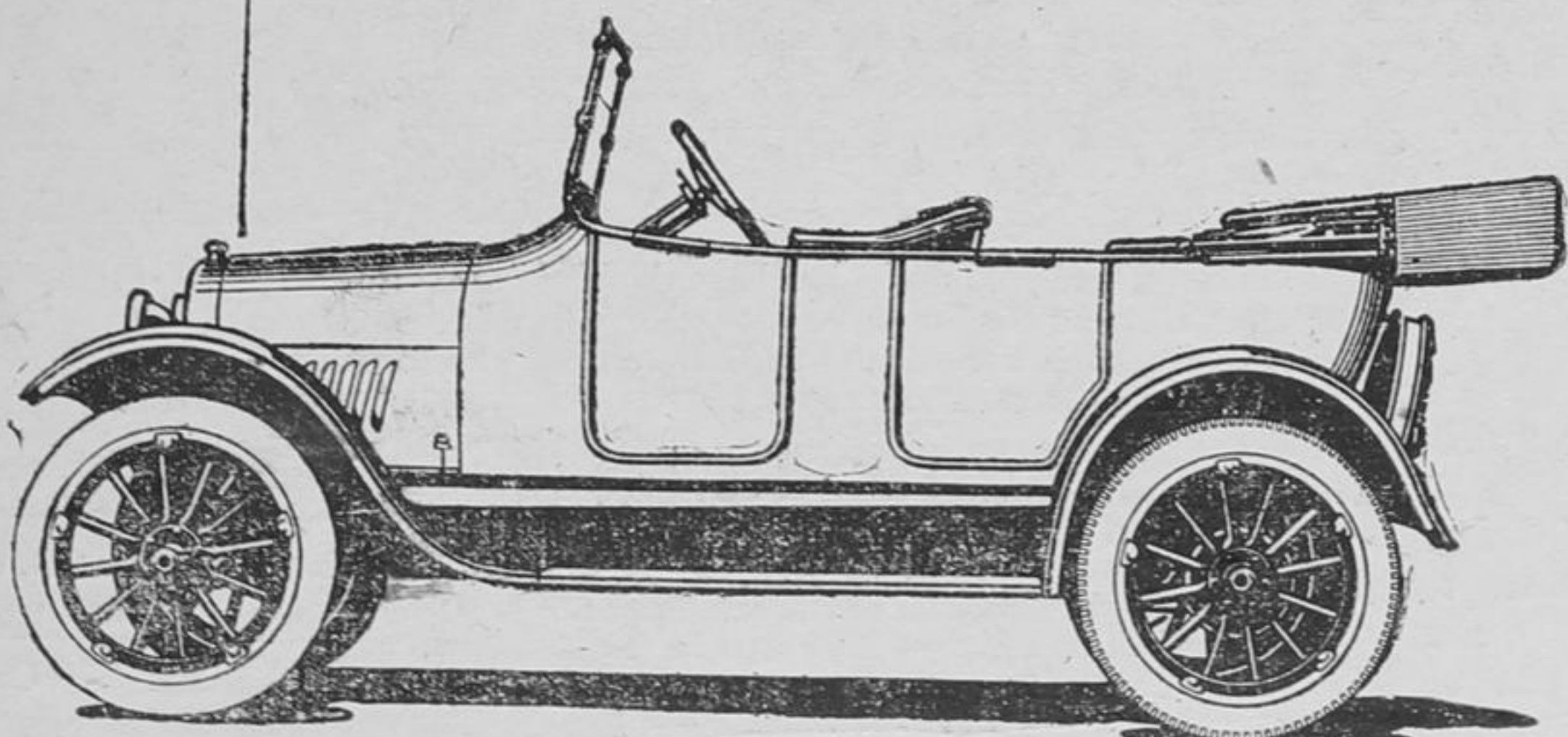
W. J. BILLING, Tyler St., P. O. Box 18
AURORA - ONT.

Made in Canada



THE Chevrolet "Four-Ninety" Touring Car possesses all the necessary qualifications and ability to satisfy those who, although desiring to spend a limited amount of money for a car, wish to possess an automobile having sufficient power and all round capabilities to do all that can be expected of any motor car.

DAVID HILL & CO.
Richmond Hill



Chevrolet "Four-Ninety" Touring Car, f.o.b. Oshawa, Ont.



The Way to the West

DAILY SERVICE

Lvs. TORONTO (Union Station)

9.15 P.M.

WINNIPEG
BRANDON
REGINA
SASKATOON



CALGARY
EDMONTON
VANCOUVER
VICTORIA

STANDARD TRANS-CONTINENTAL TRAIN EQUIPMENT THROUGH-OUT, INCLUDING NEW ALL-STEEL TOURIST SLEEPING CARS.

Sun. Mon. Wed. Fri.—Canadian National all the way.
Tues. Thurs. Sat.—Via G.T., T. & N.O., Cochrane thence C. N. Rys.
Tickets and full information from nearest Canadian National Railways' Agent,
or General Passenger Department, Toronto.

Industrial Department Toronto and Winnipeg will furnish full particulars regarding land in Western Canada available for farming or other purposes.

Canadian National Railways