

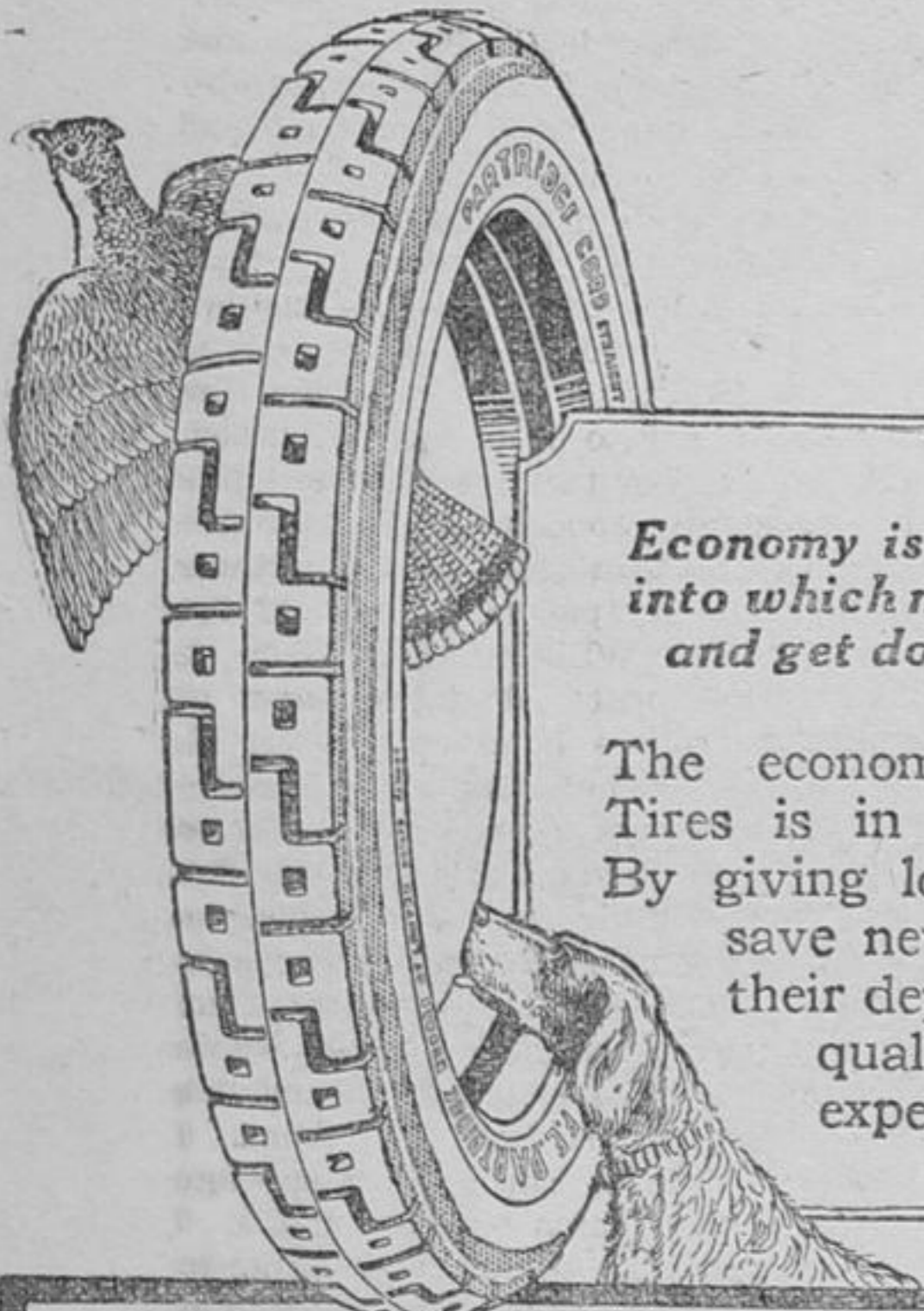
**Used in Millions
of Tea-Pots Daily**

Its Intrinsic goodness in Tea Quality - makes it the most Economical in Use - -



B577

"SALADA"



Cord or Fabric.

Economy is a savings bank into which men drop pennies and get dollars in return.

The economy of Partridge Tires is in their durability. By giving long service they save new tire costs, and their dependable wearing qualities eliminate the expense of repairs.

PARTRIDGE TIRES

Game as Their Name

117B

TAX PAPERS TO BE FILED MAY 31

Income Tax Payers Have Another Month to Report.

A despatch from Ottawa says:—Orders have been sent out from the Finance Department extending the time for filing income tax returns for the whole Dominion to May 31. Mr. R. W. Breadner, Commissioner of Taxation, stated that this action had been taken on account of the fact that a number of persons liable to the tax are absent from the country, and because greater time is needed to secure returns from Great Britain, Holland and other European countries.

It was impossible for many firms with head offices overseas and branch offices in Canada, to file returns by to-day, and therefore the extension of time has been granted. All the data required to fill out the papers could not be obtained on this side of the ocean. Many insurance, mortgage and financial companies were in this situation. The act gave the Minister power to extend the time if found necessary, but if the returns are not in by May 31, Mr. Breadner says that the penalties' clause will be rigidly enforced.

HER FADED, SHABBY APPAREL DYED NEW

"Diamond Dyes" Freshen Up Old, Discarded Garments.

Don't worry about perfect results. Use "Diamond Dyes," guaranteed to give a new, rich, fadeless color to any fabric, whether it be wool, silk, linen, cotton or mixed goods, — dresses, blouses, stockings, skirts, children's coats, feathers, draperies, coverings—everything!

The Direction Book with each package tells how to diamond dye ever any color.

To match any material, have dealer show you "Diamond Dye" Color Card.

In Siberia a winter rainbow sometimes lasts all day. It is caused by fine particles of snow suspended in the air.

Keep Minard's Liniment in the house.

Price of Bread Rises in Berlin

A despatch from Berlin says:—The Berlin bakers announce a 10 per cent. increase in the price of bread, effective May 10, when the household loaf of 100 grams, or roughly, four pounds, will cost 4½ marks. All bakers' wares have been increased proportionately. It is explained that the increases are

Invest Your Money

In 5½% DEBENTURES
Interest payable half yearly.
The Great West Permanent Loan Company.
Toronto Office 20 King St. West

due to higher wages and taxes on light and power.



COLT DISTEMPER

You can prevent this loathsome disease from running through your stable and cure all the colts suffering with it when you begin the treatment. No matter how young, **SPOHN'S DISTEMPER COMPOUND** is safe to use on any colt. It is wonderful how it prevents all distempers, no matter how colts or horses at any age are "exposed."
SPOHN MEDICAL CO., Goshen, Ind., U.S.A.



Have Your Cleaning Done by Experts

Clothing, household draperies, linen and delicate fabrics can be cleaned and made to look as fresh and bright as when first bought.

Cleaning and Dyeing

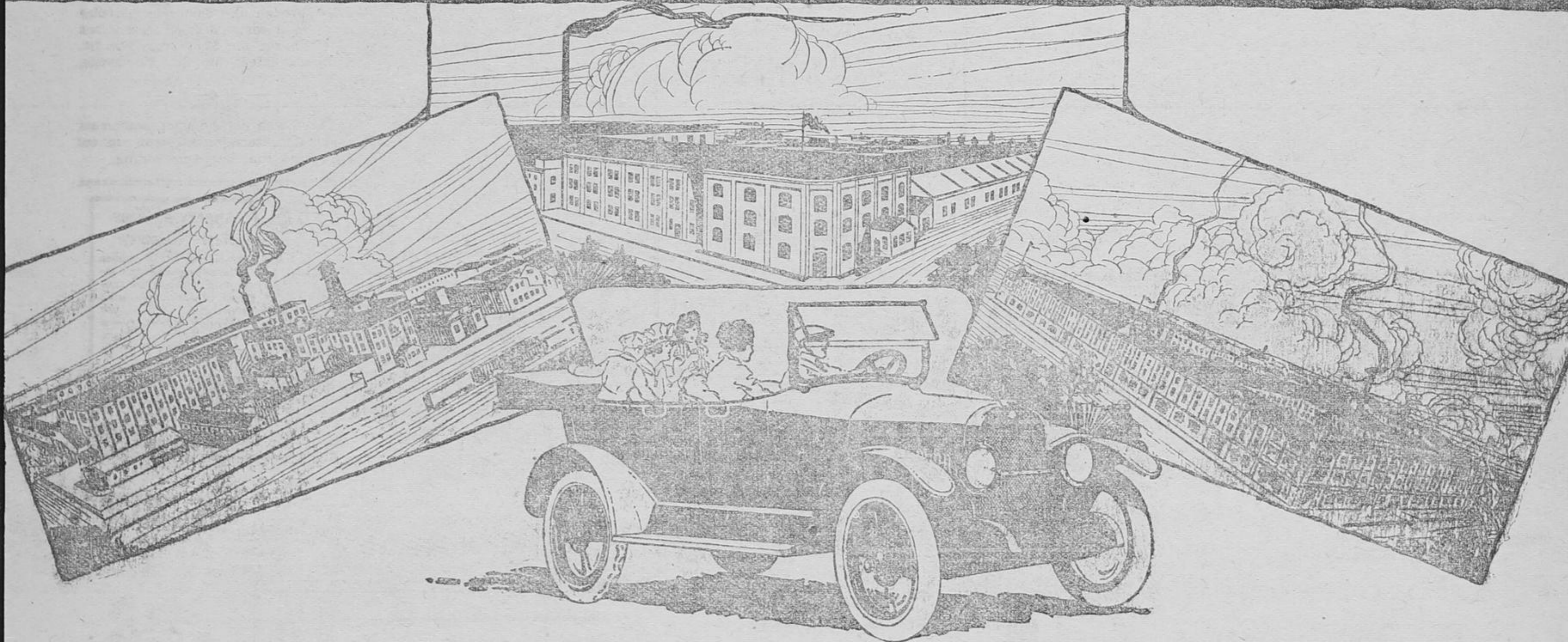
Is Properly Done at Parker's

It makes no difference where you live; parcels can be sent in by mail or express. The same care and attention is given the work as though you lived in town.

We will be pleased to advise you on any question regarding Cleaning or Dyeing. **WRITE US.**

Parker's Dye Works Limited
Cleaners & Dyers
791 Yonge St. Toronto

CHATHAM PLANTS OF GRAY-DORT MOTORS LIMITED



You Can Buy the Best Gray-Dort Ever Built

THE Gray-Dort which your dealer has to-day is the best Gray-Dort ever built.

More than that. It is the greatest Gray-Dort value.

For \$1,365 you get a Gray-Dort with ten major improvements and a dozen refinements.

With a bigger gas tank, placed in the rear, with a new, extra-heavy, extra-safe steering gear. With the emergency brake on a lever—and with Thermoid brake linings.

A more convenient Gray-Dort, the side

curtains opening with the doors, with very much more leg-room in the tonneau and with more in the driving compartment because of the shorter and smarter cowl.

A Gray-Dort which has the good-looks of a smarter top, hand-tailored in our own shops, a smarter hood, with many long, narrow louvres.

There are many more refinements which you will find when you drive the new Gray-Dort.

Here you have the same powerful, finely-built motor with its big bore and long stroke. The same heavy crankshaft, many pounds heavier than on other light cars.

A rear axle built specially for us right here in Chatham. Long springs, built here, too. Westinghouse starting and lighting. Improved Carter carburetor. Every unit of motor and chassis is bigger and stronger and higher quality than is usually considered for light cars.

Gray-Dort production has been doubled for this year. But our dealers tell us that this will not be sufficient to meet the demand. It would be wise to see the Gray-Dort dealer to-day.

PRICES

- 5-Passenger Car—\$1365, f.o.b. Chatham, war tax extra.
- 2-Passenger Roadster is the same price.
- Gray-Dort Special—\$150 extra on the standard.
- Gray-Dort Ace—\$255 extra on the standard.

W. G. Baldock
Richmond Hill
Ont.

GRAY-DORT MOTORS LIMITED
Chatham • Ontario

Built in Canada by Skilled Canadian Workers and Canadian Capital