

Village Directory.

Church of England—Services at 8 p. m. 1st, 2nd and 4th Sunday. Third Sunday at 11 a. m. Presbyterian Church—Services at 11 a. m., and 7 p. m. Sunday School at 2.30. Prayer meeting Wednesday evening.
 Roman Catholic Church—Services on alternate Sundays at 9 a. m. and 10.30 a. m.
 Methodist Church—Services at 10.30 a. m., and 7 p. m. Sunday School at 2.30. General prayer meeting Thursday, evening.
 Richmond Lodge, A. F. and A. M.—Meets Monday on or before full moon.
 Court Richmond, A. O. F.—Meets second and fourth Friday.
 Ivy Lodge, A. O. U. W.—Meets third Wednesday of each month.
 Camp Elgin, S. O. S.—Meets second and fourth Wednesday.
 E. T. of Temperance—Meets first Wednesday of each month.
 Fire Brigade—Meets first Monday of every month.
 Public Library and Reading Room—Open Tuesday, and Saturday evenings.
 Epworth League—Meets every Monday.

POST OFFICE NOTICE

Until further notice Mails will be closed at the Richmond Hill Post Office as follows:—
 MORNING 8.35
 EVENING 6.35
MONEY ORDERS
 Hours for issuing Money Orders:—
 MORNING 8.00
 EVENING 6.00
 N. B.—Registered letters must be handed in at least Fifteen Minutes earlier than the above mentioned hours for closing.
OFFICE CLOSURE AT 7.30 P. M.
 M. TEEFY, Postmaster.

50 YEARS' EXPERIENCE
PATENTS
 TRADE MARKS
 DESIGNS
 COPYRIGHTS & C.
 Anyone sending a sketch and description may quickly ascertain our opinion free whether an invention is probably patentable. Communications strictly confidential. Handbook on Patents sent free. Oldest agency for securing patents. Patents taken through Munn & Co. receive special notice, without charge, in the
Scientific American.
 A handsomely illustrated weekly. Largest circulation of any scientific journal. Terms, \$3 a year; four months, \$1. Sold by all newsdealers.
MUNN & Co. 361 Broadway, New York
 Branch Office, 625 F St., Washington, U. C.

Toronto & York Radial Railway Co.
METROPOLITAN DIVISION
Change in Time Table
 Beginning July 30th, 1906

GOING NORTH
 C. P. R. Crossing (Toronto), Leave.
 —A. M. 6.00, 7.09, 8.00†, 9.00, 10.00, 11.00, 12.00. P. M. 1.00, 2.00, 3.00, 4.00, 5.00, 6.00†, 7.00, 9.00.
 Thornhill A. M. 6.35, 7.35, 8.35, 9.35, 10.35, 11.35. P. M. 12.35, 1.35, 2.35, 3.35, 4.35, 5.35, 6.35, 7.35, 9.35.
 Richmond Hill A. M. 6.50, 7.50, 8.50, 9.50, 10.50, 11.50. P. M. 12.50, 1.50, 2.50, 3.50, 4.50, 5.50, 6.50, 7.50, 9.50.
 Bond Lake Junction A. M. 7.05, 8.05, 9.05, 10.05, 11.05. P. M. 12.05, 1.05, 2.05, 3.05, 4.05, 5.05, 6.05, 7.05, 8.05, 10.05.
 Aurora A. M. 7.20, 8.20, 9.20, 10.20, 11.20. P. M. 12.20, 1.20, 2.20, 3.20, 4.20, 5.20, 6.20, 7.20, 8.20, 10.20.
 Newmarket (Huron St.), Arrive, A. M. 7.40, 8.40, 9.40, 10.40, 11.40. P. M. 12.40, 1.40, 2.40, 3.40, 4.40, 5.40, 6.40, 7.40, 8.40, 10.40.
GOING SOUTH.
 Newmarket (Huron St.), Leave, A. M. 5.45, 6.45, 7.45†, 8.45, 9.45, 10.45, 11.45. P. M. 12.45, 1.45, 2.45, 3.45, 4.45, 5.45†, 6.45, 8.45.
 Newmarket Station A. M., 6.00, 7.00, 8.00, 9.00, 10.00, 11.00, 12.00. P. M. 1.00, 2.00, 3.00, 4.00, 5.00, 6.00, 7.00, 9.00.
 Aurora A. M. 6.15, 7.15, 8.15, 9.15, 10.15, 11.15. P. M. 12.15, 1.15, 2.15, 3.15, 4.15, 5.15, 6.15, 7.15, 9.15.
 Bond Lake Junction A. M. 6.30, 7.30, 8.30, 9.30, 10.30, 11.30. P. M. 12.30, 1.30, 2.30, 3.30, 4.30, 5.30, 6.30, 7.30, 9.30.
 Richmond Hill A. M. 6.45, 7.45, 8.45, 9.45, 10.45, 11.45. P. M. 12.45, 1.45, 2.45, 3.45, 4.45, 5.45, 6.45, 7.45, 9.45.
 Thornhill A. M. 6.55, 7.55, 8.55, 9.55, 10.55, 11.55. P. M. 12.55, 1.55, 2.55, 3.55, 4.55, 5.55, 6.55, 7.55, 9.55.
 C. P. R. Crossing, Arrive, A. M. 7.40, 8.40, 9.40, 10.40, 11.40. P. M. 12.40, 1.40, 2.40, 3.40, 4.40, 5.40, 6.40, 7.40, 8.40, 10.40.

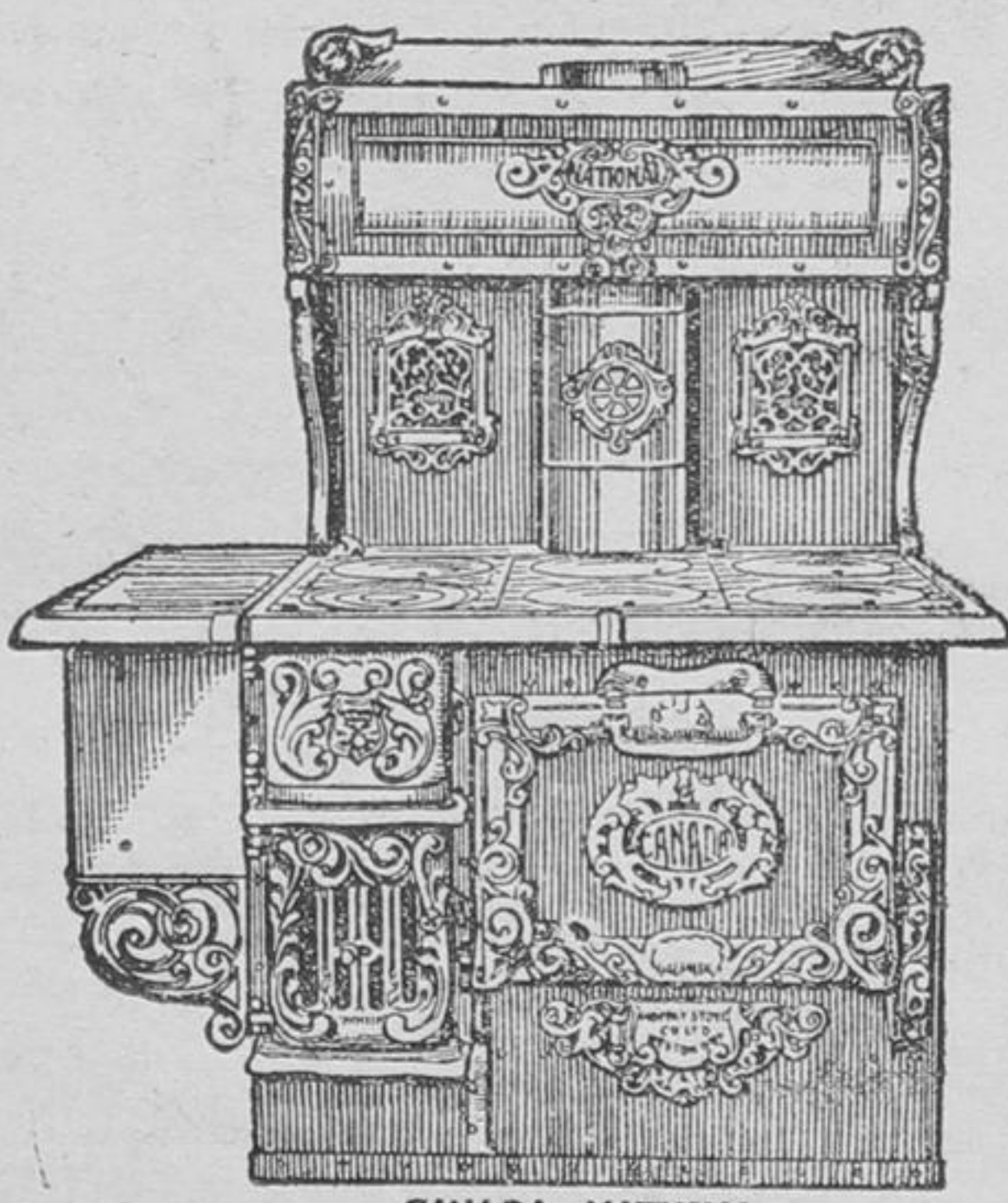
Wednesday and Saturday evenings a late car leaves O. P. R. Crossing for Newmarket and intermediate points at 11.30 p. m.
 Every Wednesday and Saturday night a late car will leave Newmarket Station for Toronto and intermediate points at 10.45 p. m.
 †Connect with Schomberg & Aurora Railway.

EXTRA SERVICE ON ALL HOLIDAYS.
 W. H. MOORE, Manager

High Grade Train-
ing Pays and that is the kind the famous

ELLIOTT Business College
 TORONTO, ONT.

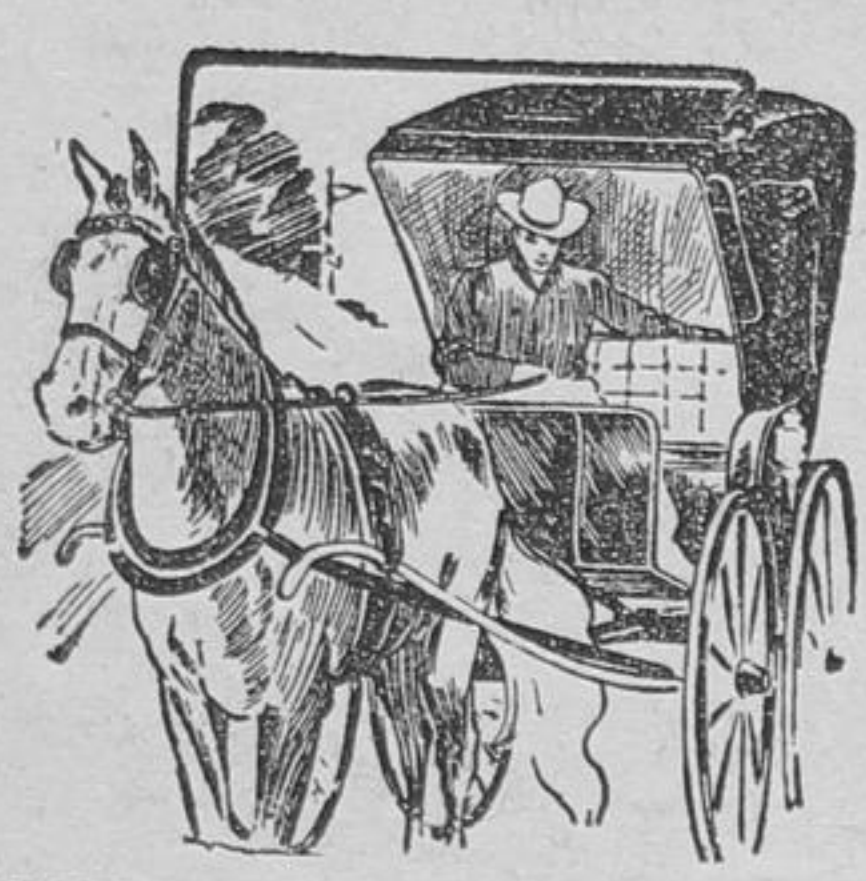
gives to its students. Recent students have taken positions at salaries at from \$50 per month to \$1000 per annum. It is a well-known fact that our school is the best of its kind in Canada. This month is a splendid time to enter. All graduates get positions. The demand is nearly 20 times the supply. Write to-day for magnificent catalogue.
 W. J. ELLIOTT, Principal.
 (Cor. Yonge and Adelaide Sts.)



CANADA NATIONAL

Steel and cast Ranges, all kinds, sizes and prices. Heaters, Parlor Cooks, etc. We have a few good second-hand Parlor Cook Stoves; will sell cheap.

Jacob Eyer & Son



Harness Character

There is character in harness. Everyone should know how to select the best. Those who don't know may depend on us.
 The horsewear we sell all over this country stands for us, and we stand by it.
 Our attention is given to really
GOOD HARNESS
 substantially made and rightly sold. You'll get service and style out of what we sell you.

GEO. McDONALD, Richmond Hill

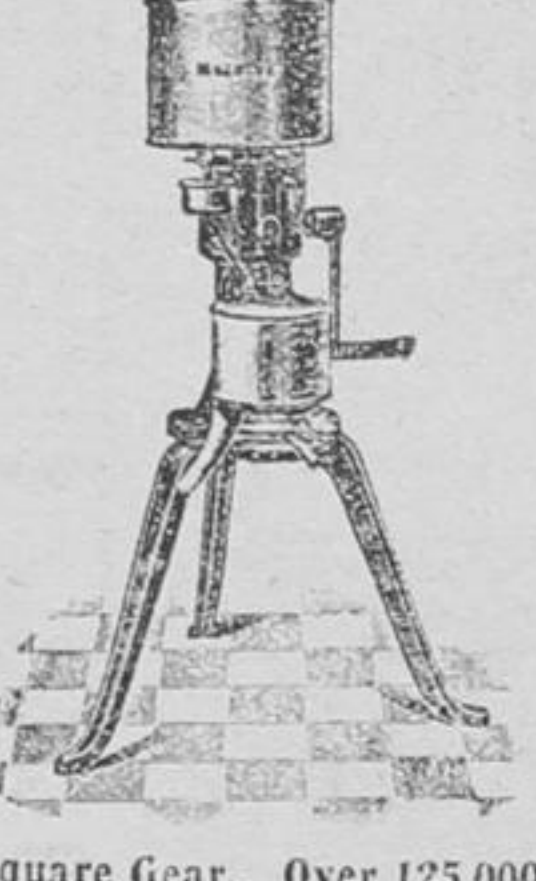
SALE OF SEWING MACHINES AT P. G. SAVAGE'S
 Starting on Friday, Aug. 24, and lasting only one month at figures as quoted below and these for cash (only).
 New Williams Sewing Machine, full cabinet, ball bearing... \$45.00
 " " " " drop head, " " " " 33.00
 " " " " cover top, " " " " 30.00
 Standard Rotary Shuttle, full cabinet, ball bearing... 50.00
 " " " " automatic lift, drop head, ball bearing... 35.00
 Standard Rotary Shuttle, covered top, 3 drawers, ball bearing... 32.50
 Standard Vibrating Shuttle, automatic lift, D.H., 5 drawers 33.00
 Colonial " " " " 7 drawers 28.50
 The Favorite, hand lift, drop head, 5 drawers... 25.00
 All the above are in oak. All of these will be in full operation during Exhibition in Ladies' Building.

"THE LIBERAL" CLUBBING RATES

THE LIBERAL to January 1, 1908	\$ 1 00
" " and Weekly Globe to Jan. 1, 1908	1 75
" " " " Mail & Empire to Jan. 1, 1908	1 75
" " " " Sun " " "	1 85
" " " " Farming World " " "	1 35
" " " " Daily World " " "	3 25
" " & Family Herald & Weekly Star, 1 year	1 75
" " " " Daily Globe, (York Co.) " " "	3 50
" " " " Mail & Empire, (York Co.) " " "	3 50
" " " " Farmers' Advocate, " " "	2 50
" " " " New Idea Woman's Journal " " "	1 50

Special rates on Toronto Daily Star and Daily News.
 Subscriptions taken for all magazines.
 When sending subscriptions write name and P. O. address plainly. Enclose postal note or express order and mail to
T. F. McMahon, THE LIBERAL, Richmond Hill, Ont.

MELOTTE SEPARATOR



Square Gear. Over 125,000 in daily use. Machines placed on week's trial free.

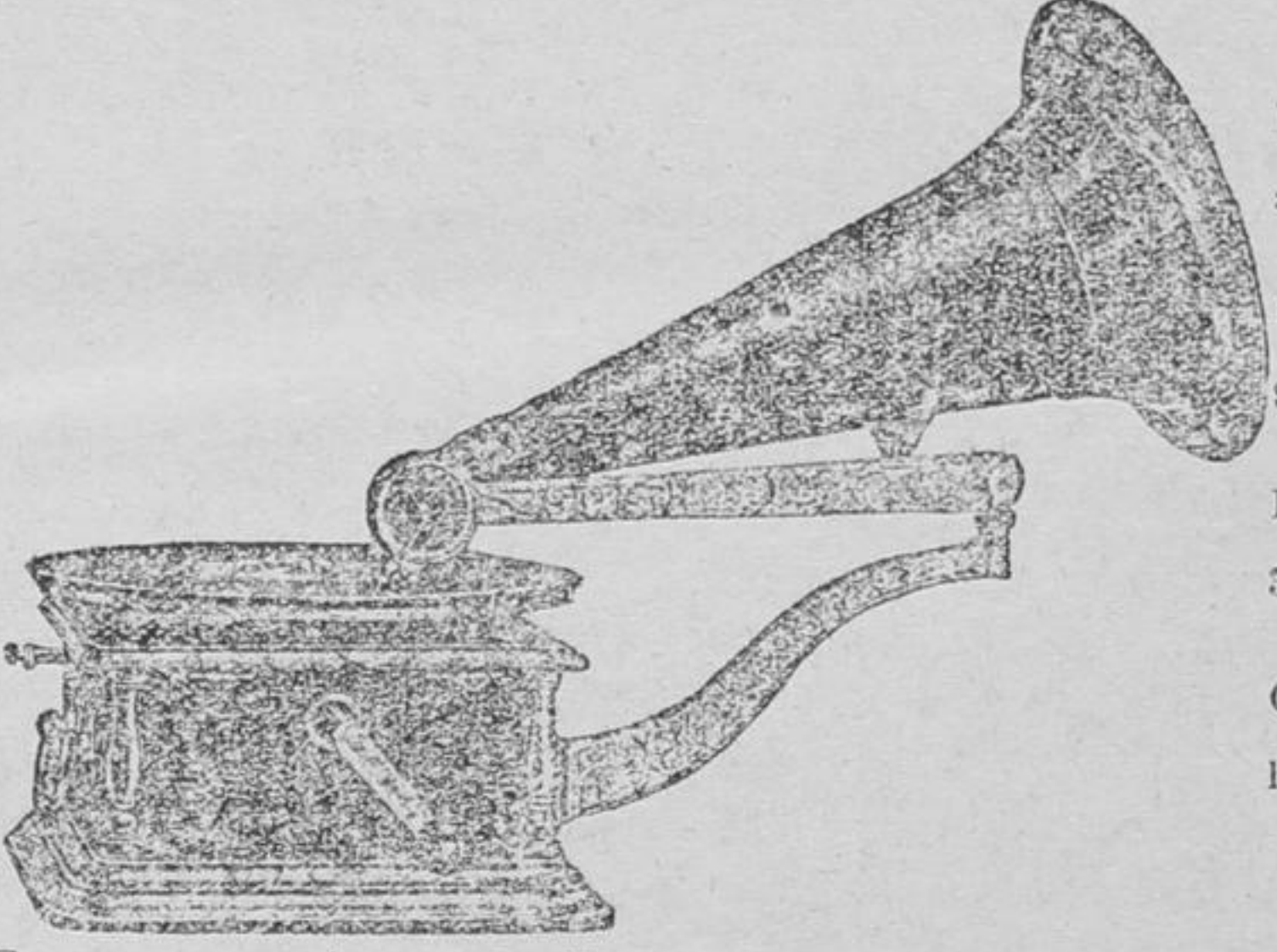
New Williams Sewing Machine

Only machine with self-balancing bowl. Freer action and few ball-bearings than any other machine on the market. Melotte bowl is shallow and wide and opens in the centre so that every part of it can be easily cleaned.
 Silent, Simple, Easy-Running and Strong.



Automatic throw-off of belt. Equipped with ball bearings. Full equipment of latest attachments. Machines placed on trial free.

Talking Machines, Records and Needles



Both disc and cylinder
 Prices from \$5.00 up.
 Records from 50 cents up.
 Come and hear them.

Easy terms given on all. **W. C. PETHICK, Agent**
 RICHMOND HILL.

Paints Mixed Paints Robertson's Paints
 Unequaled for Purity and Durability
 There is nothing as good and nothing could be better.
 "Imperial measure at same price as others."
 Our stock of oils, paints, varnishes, whitening, zinc white, glues, putty, alabaster stains—full, and prices right.
W. A. Sanderson
 Richmond Hill

STANDARD BANK Of Canada
RICHMOND HILL AND MAPLE
 Capital \$1,000,000
 Rest \$1,000,000
DEPOSITS
 Received in Savings' Bank Department and interest allowed at
HIGHEST CURRENT RATES.
 Notice of withdrawal not necessary. All deposits payable on demand.
Money Loaned on Farmers' Sale Notes. Blank Note Forms Supplied Free.
General Banking Business Transacted.
 BANK OPEN FROM 10 to 3.
 For other particulars call at the Bank
H. H. LOOSEMORE,
 AGENT.

ED. BIRCH HOUSE PAINTER
 GLAZIER, GRAINER and PAPEPHANGER
 RESIDENCE, MILL ROAD, SOUTH OF RICHMOND HILL.
 41-6m RICHMOND HILL P. O.

Subscribe for THE LIBERAL EDGELY CIDER & JELLY MILL
 Will run on custom work during October and November as follows:—
 Starting Monday, Oct. 1st, will run first three days of each week during October and November, up to and including Nov. 21, 1906.
 As is well known we make raw cider, boiled cider, apple butter, and jelly all from our own apples.
 Cider can be boiled to any thickness. Jelly apples should be well ripened and two-thirds sweet.
 Parties wishing apple butter should keep their peeling apples separate from the cider apples.
 Will buy a few peeling apples only. No cider apples wanted.
 As we have now, after many improvements, a capacity of about 3000 gallons of cider boiled into jelly and apple butter per day, we hope to give our customers every satisfaction.
 Customers are respectfully requested to do business on the above mentioned days as we live a distance from the factory and customers coming any other day would find it very inconvenient.
 We hope to see all our old customers back again this season as usual with as many more as possible.
 Thanking the general public for past favors, we solicit a continuance of the same in the future.
J. WINGER
 INTERESTING INSTRUCTIVE
"Correct English—How to use it."
 A MONTHLY MAGAZINE DEVOTED TO THE USE OF ENGLISH.
 JOSEPHINE TURCK BAKER, Editor.
 Partial contents for this Month.
 Course in English for the Beginner.
 Course in English for the Advanced Pupil.
 How to increase One's Vocabulary.
 The Art of Conversation.
 Should and Would: How to use them.
 Pronunciations (Century Dictionary).
 Correct English in the Home.
 Correct English in the School.
 What to say and What Not to Say.
 Course in Letter-Writing and Punctuation.
 Alphabetic list of Abbreviations.
 Business English for the Business Man.
 Compound Words: How to Write Them.
 Studies in English Literature.
 Agents Wanted.
 \$1.00 a year. Send 10 cents for Sample Copy.
CORRECT ENGLISH, Evanston, Ill