

Village Directory.

Church of England—Services at 8 p. m. 1st, 2nd and 4th Sunday. Third Sunday at 11 a. m. Presbyterian Church—Services at 11 a. m., and 7 p. m. Sunday School at 2.30. Prayer meeting Wednesday evening.
 Roman Catholic Church—Services on alternate Sundays at 9 a. m. and 10.30 a. m. Methodist Church—Services at 10.30 a. m., and 7 p. m. Sunday School at 2.50. General prayer meeting Thursday evening.
 Richmond Lodge, A F and A M—Meets Monday on or before full moon
 Court Richmond, A O F—Meets second and fourth Friday
 Ivy Lodge, A O U W—Meets third Wednesday of each month
 Camp Elgin, S O S—Meets second and fourth Wednesday
 R T of Temperance—Meets first Wednesday of each month
 Fire Brigade—Meets first Monday of every month
 Public Library and Reading Room—Open Tuesday, and Saturday evenings.
 Epworth League—Meets every Monday

POST OFFICE NOTICE

Until further notice Mails will be closed at the Richmond Hill Post Office as follows:—
 MORNING 8.00
 EVENING 6.15
MONEY ORDERS
 Hours for issuing Money Orders:—
 MORNING 8.30
 EVENING 6.00
 N. B.—Registered letters must be handed in at least Fifteen Minutes earlier than the above mentioned hours for closing.
OFFICE CLOSURES AT 7.30 P. M.
 M. TEEFY, Postmaster.

EMPIRE MILLS

I am prepared to do gristing and chopping every day. All kinds of mill feed and chop on hand.

Manitoba Patent and Pastry Flour

I also keep the celebrated

Gladstone Flour

One of the best flours for home-made bread and general family use. Try it and be convinced.
 Also Wheat Gems, a choice Breakfast Food.

H. B. SCHMIDT,

Proprietor,

Newton Brook.

PLEASANT VIEW FARM

The proprietor of Pleasant View Herd Holstein Cattle and Breeder of Improved Chester White Hogs, Lot 29, 1st Con., Vaughan (Thornhill) has for sale some good young stock.
 Thoroughbred bull and hog kept for service on the premises.
 D. G. GOODERHAM, Proprietor

Toronto & York Radial Railway Co.
METROPOLITAN DIVISION

Change in Time Table

Beginning July 30th, 1906

GOING NORTH

C. P. R. Crossing (Toronto), Leave.
 —A. M. 6.00, 7.00, 8.00†, 9.00, 10.00, 11.00, 12.00. P. M. 1.00, 2.00, 3.00, 4.00, 5.00, 6.00†, 7.00, 9.00.
 Thornhill A. M. 6.35, 7.35, 8.35, 9.35, 10.35, 11.35. P. M. 12.35, 1.35, 2.35, 3.35, 4.35, 5.35, 6.35, 7.35, 9.35.
 Richmond Hill A. M. 6.50, 7.50, 8.50, 9.50, 10.50, 11.50. P. M. 12.50, 1.50, 2.50, 3.50, 4.50, 5.50, 6.50, 7.50, 9.50.
 Bond Lake Junction A. M. 7.05, 8.05, 9.05, 10.05, 11.05. P. M. 12.05, 1.05, 2.05, 3.05, 4.05, 5.05, 6.05, 7.05, 8.05, 10.05.
 Aurora A. M. 7.20, 8.20, 9.20, 10.20, 11.20. P. M. 12.20, 1.20, 2.20, 3.20, 4.20, 5.20, 6.20, 7.20, 8.20, 10.20.
 Newmarket (Huron St.), Arrive, A. M. 7.40, 8.40, 9.40, 10.40, 11.40. P. M. 12.40, 1.40, 2.40, 3.40, 4.40, 5.40, 6.40, 7.40, 8.40, 10.40.

GOING SOUTH.

Newmarket (Huron St.), Leave, A. M. 5.45, 6.45, 7.45†, 8.45, 9.45, 10.45, 11.45. P. M. 12.45, 1.45, 2.45, 3.45, 4.45, 5.45†, 6.45, 8.45.
 Newmarket Station A. M., 6.00, 7.00, 8.00, 9.00, 10.00, 11.00, 12.00. P. M. 1.00, 2.00, 3.00, 4.00, 5.00, 6.00, 7.00, 9.00.
 Aurora A. M. 6.15, 7.15, 8.15, 9.15, 10.15, 11.15. P. M. 12.15, 1.15, 2.15, 3.15, 4.15, 5.15, 6.15, 7.15, 9.15.
 Bond Lake Junction A. M. 6.30, 7.30, 8.30, 9.30, 10.30, 11.30. P. M. 12.30, 1.30, 2.30, 3.30, 4.30, 5.30, 6.30, 7.30, 9.30.
 Richmond Hill A. M. 6.45, 7.45, 8.45, 9.45, 10.45, 11.45. P. M. 12.45, 1.45, 2.45, 3.45, 4.45, 5.45, 6.45, 7.45, 9.45.
 Thornhill A. M. 6.55, 7.55, 8.55, 9.55, 10.55, 11.55. P. M. 12.55, 1.55, 2.55, 3.55, 4.55, 5.55, 6.55, 7.55, 9.55.
 C. P. R. Crossing, Arrive, A. M. 7.40, 8.40, 9.40, 10.40, 11.40. P. M. 12.40, 1.40, 2.40, 3.40, 4.40, 5.40, 6.40, 7.40, 8.40, 10.40.
 Wednesday and Saturday evenings a late car leaves C. P. R. Crossing for Newmarket and intermediate points at 11.30 p. m.
 Every Wednesday and Saturday night a late car will leave Newmarket Station for Toronto and intermediate points at 10.45 p. m.
 †Connect with Schomberg & Aurora Railway.
EXTRA SERVICE ON ALL HOLIDAYS.
 W. H. MOORE, Manager

WE KEEP IN STOCK
Portland Cement
Binder Twine
Deering Harvesting Machinery
Hardware of all kinds
Tinsmithing promptly attended to
Jacob Eyer & Son.

METROPOLITAN GROCERY,
 Next Door North of Waiting Room.

UP-TO-DATE GROCERIES
 Fresh and Clean.
Best Brands of Canned Goods
 Choice variety of
CANDIES
 IN STOCK.
ICE CREAM AND SUMMER DRINKS
 A SPECIALTY.
 Splendid assortment of Boots and Shoes.
 Livery in connection. Good horses and rigs. Rubber-tired buggies.
T. B. LUDFORD, Proprietor

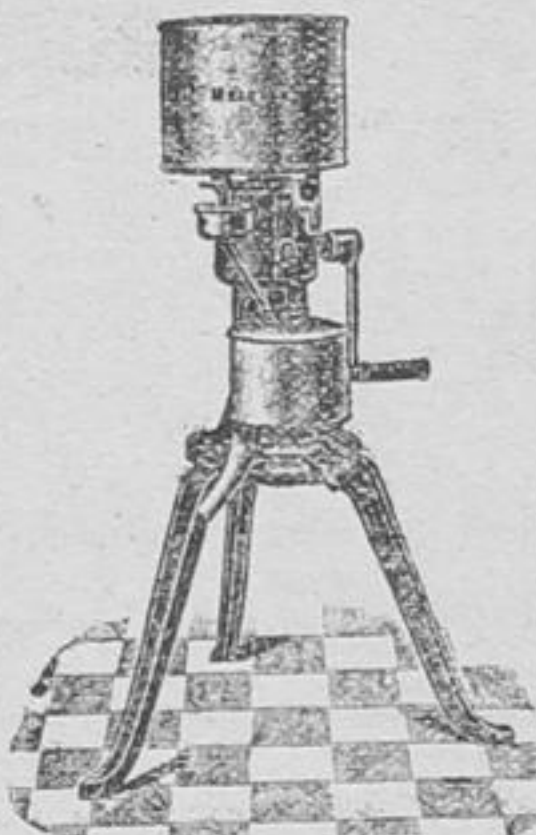


Harness Character
 There is character in harness. Everyone should know how to select the best. Those who don't know may depend on us.
 The horsewear we sell all over this country stands for us, and we stand by it.
 Our attention is given to really
GOOD HARNESS
 substantially made and rightly sold. You'll get service and style out of what we sell you.

GEO. McDONALD, Richmond Hill

P. G. SAVAGE
AGENT FOR
Confederation Life Ass'n
London Guarantee & Accident Co.
Also Mercantile Fire Co.
Western Norwich Union
York Mutual
 New Williams Sewing Machine
 And Karn Pianos
 Furniture, Paints and Oils
 Painters' Supplies

MELLOTTE SEPARATOR



Square Gear. Over 125,000 in daily use. Machines placed on week's trial free.

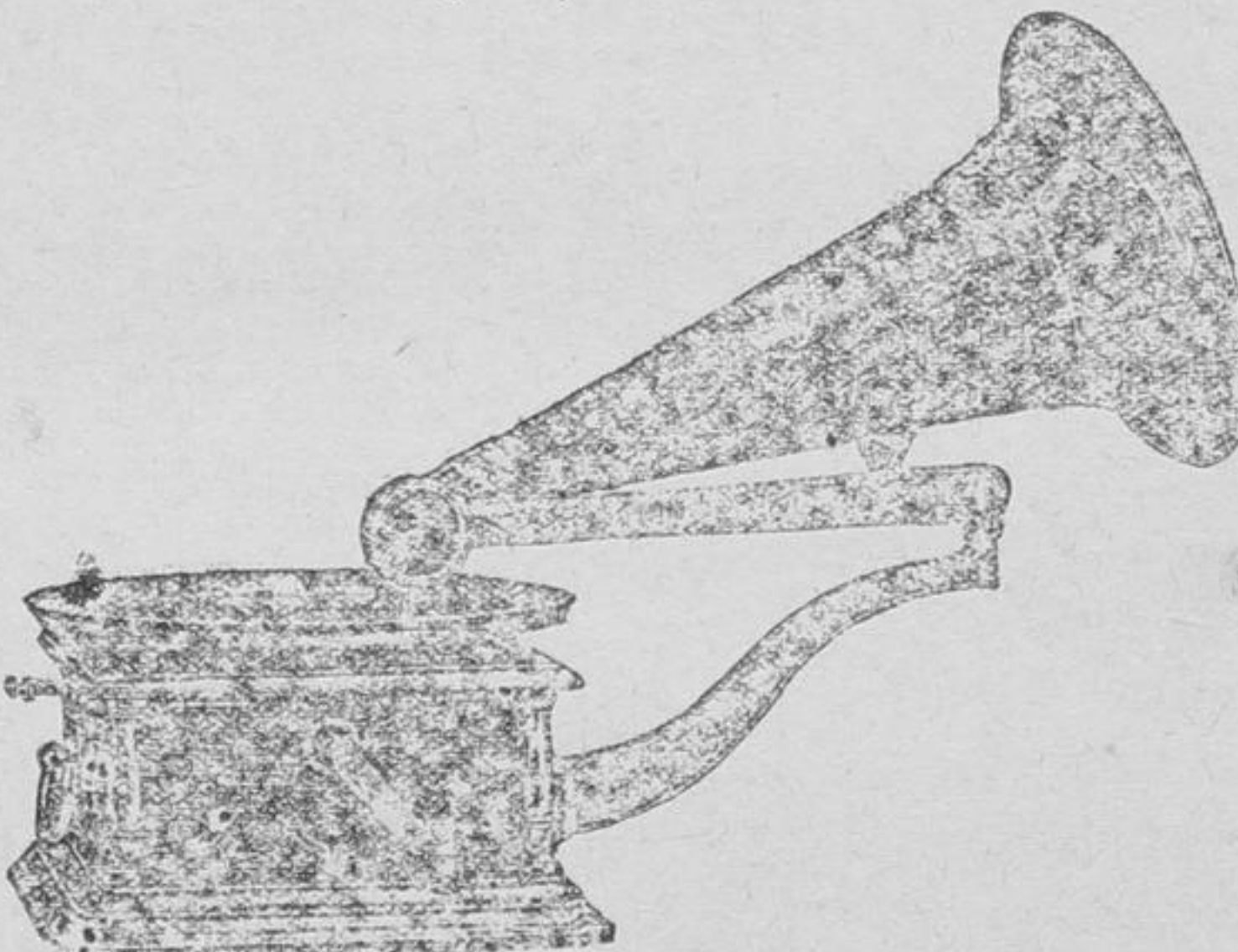
New Williams Sewing Machine

Silent, Simple, Easy-Running and Strong.



Automatic throw-off of belt. Equipped with ball bearings. Full equipment of latest attachments. Machines placed on trial free.

Talking Machines, Records and Needles



Both disc and cylinder
 Prices from \$5.00 up.
 Records from 5 cents up.
 Come and hear them.

Easy terms given on all.

W. C. PETHICK, Agent
 RICHMOND HILL.



FARM LABORERS

To Manitoba and Saskatchewan

1906 **\$12** for the going trip. **\$18** additional for the return ticket, under conditions as below.

GOING DATES

- AUG. 14** Stations south of, but not including main line, Toronto to Sarnia, including Toronto.
- AUG. 17** Main line Toronto to Sarnia and stations north, except north of Cardwell Junction and Toronto on North Bay Section.
- AUG. 22** From all points Toronto and east to and including Sharbot Lake and Kingston, and north of Toronto and Cardwell Junction on North Bay and Midland Divisions.

One way second class tickets will be sold to Winnipeg only.
 Representative farmers, appointed by Manitoba and Saskatchewan Governments, will meet laborers on arrival at Winnipeg.
 Free transportation will be furnished at Winnipeg to points where laborers are needed.
 A certificate is furnished when each ticket is purchased, and this certificate, when executed by farmer, showing that laborer has worked thirty days or more, will be honored from that point for a second class ticket back to starting point in Ontario, at \$18.00, prior to Nov. 1st, 1906.
 Tickets will be issued to women as well as to men, but will not be issued at half fare to children.
 Tickets are good only on special Farm Laborers' trains.
 For full particulars see nearest C. P. R. ticket agent, or write C. B. Foster, D. P. A., C. P. R., Toronto.

INTERESTING INSTRUCTIVE.

“Correct English—How to use it.”

A MONTHLY MAGAZINE DEVOTED TO THE USE OF ENGLISH.
 JOSEPHINE TURCK BAKER, Editor.

Partial contents for this Month.
 Course in English for the Beginner.
 Course in English for the Advanced Pupil.
 How to increase One's Vocabulary.
 The Art of Conversation.
 Should and Would: How to use them.
 Pronunciations (Century Dictionary).
 Correct English in the Home.
 Correct English in the School.
 What to say and What Not to Say.
 Course in Letter-Writing and Punctuation.
 Alphabetic list of Abbreviations.
 Business English for the Business Man.
 Compound Words: How to Write Them.
 Studies in English Literature.

Agents Wanted.
 \$1.00 a year. Send 10 cents for Sample Copy,
CORRECT ENGLISH, Evanston, Ill

Fresh Milk Cow
 The undersigned has for sale a first class fresh milk cow.
 ARTHUR QUANTZ,
 Lot 13, 2nd con. Markham,
 6-2 Langstaff P. O.

NOTICE
 When in need of rough or dressed lumber, mouldings, shingles, doors, etc., we can supply your need.
THE W. BOOTH LUMBER CO. LIMITED
 C. P. R. Tracks & Summerhill Ave.
 50-3 mos. North Toronto

STANDARD BANK
Of Canada

RICHMOND HILL
 Capital \$1,000,000
 Rest \$1,000,000

DEPOSITS
 Received in Savings' Bank Department and interest allowed at

HIGHEST CURRENT RATES.
 Notice of withdrawal not necessary. All deposits payable on demand.

Money Loaned on Farmers' Sale Notes. Blank Note Forms Supplied Free.

General Banking Business Transacted.

BANK OPEN FROM 10 to 3.

For other particulars call at the Bank
H. H. LOOSEMORE,
 AGENT.

DIVISION - COURT.

The Next Sitting of Division Court for No. 3, County of York, will be held in the Court Room,

RICHMOND HILL
 —ON—

FRIDAY, OCT. 5, 1906
 Commencing at 10 a. m.
 T. F. McMAHON, CLERK

For Sale

A fresh milk Jersey cow, with calf by side, on west part lot 1, con. 2, King.
JAMES KERSWELL
 Temperanceville
 6-2