

**Village Directory.**

Church of England—Services at 3 p. m. 1st, 2nd and 4th Sunday. Third Sunday at 11 a. m.  
 Presbyterian Church—Services at 11 a. m., and 7 p. m. Sunday School at 2.30. Prayer meeting Wednesday evening.  
 Roman Catholic Church—Services on alternate Sundays at 9 a. m. and 10.30 a. m., and 7 p. m. Sunday School at 2.30. General prayer meeting Thursday evening.  
 Richmond Lodge, A. F. and A. M.—Meets Monday on or before full moon.  
 Court Richmond, A. O. F.—Meets second and fourth Friday.  
 Ivy Lodge, A. O. U. W.—Meets third Wednesday of each month.  
 Camp Egan, S. O. S.—Meets second and fourth Wednesday.  
 R. T. of Temperance—Meets first Wednesday of each month.  
 Fire Brigade—Meets first Monday of every month.  
 Public Library and Reading Room—Open Tuesday, and Saturday evenings.  
 Epworth League—Meets every Monday.

**EMPIRE MILLS**

I am prepared to do gisting and chopping every day. All kinds of mill feed and chop on hand.

**Manitoba Patent and Pastry Flour**

I also keep the celebrated

**Gladstone Flour**

One of the best flours for home-made bread and general family use. Try it and be convinced.  
 Also Wheat Gems, a choice Breakfast Food.

H. B. SCHMIDT,

Proprietor,

Newton Brook.



Anyone sending a sketch and description may quickly ascertain our opinion free whether an invention is probably patentable. Communications strictly confidential. Handbook on Patents sent free. Oldest agency for securing patents. Patents taken through Munn & Co. receive special notice, without charge in the **Scientific American.**

A handsomely illustrated weekly. Largest circulation of any scientific journal. Terms, \$3 a year; four months, \$1. Sold by all newsdealers.  
**MUNN & Co.** 361 Broadway, New York  
 Branch Office, 635 F St., Washington, D. C.

Toronto & York Radial Railway Co.  
**METROPOLITAN DIVISION**

**Change in Time Table**

Beginning June 25th, 1906

**GOING NORTH**

C. P. R. Crossing (Toronto), Leave.  
 —A. M. 6.00, 7.00, 8.00†, 9.00, 11.00.  
 P. M. 1.00, 2.00, 3.00, 5.00, 6.00†, 8.00, 9.00\*.  
 York Mills P.O. A. M. 6.15, 7.15, 8.15, 9.15, 11.15. P. M. 1.15, 2.15, 3.15, 5.15, 6.15, 8.15, 9.15\*.  
 Thornhill A. M. 6.35, 7.35, 8.35, 9.35, 11.35. P. M. 1.35, 2.35, 3.35, 5.35, 6.35, 8.35, 9.35\*.  
 Richmond Hill A. M. 6.45, 7.45, 8.45, 9.45, 11.45. P. M. 1.45, 2.45, 3.45, 5.45, 6.45, 8.45, 9.45\*.  
 Bond Lake Junction A. M. 7.00, 8.00, 9.00, 10.00. P. M. 12.00, 2.00, 3.00, 4.00, 6.00, 7.00, 9.00, 10.00\*.  
 Aurora A. M. 7.15, 8.15, 9.15, 10.15, 11.15. P. M. 12.15, 2.15, 3.15, 4.15, 6.15, 7.15, 9.15, 10.15\*.  
 Newmarket, Arrive, A. M. 7.30, 8.30, 9.30, 10.30. P. M. 12.30, 2.30, 3.30, 4.30, 6.30, 7.30, 9.30, 10.30\*.

**GOING SOUTH.**

Newmarket A. M. 6.00, 7.30†, 8.30, 9.30, 10.30. P. M. 12.30, 1.30, 2.30, 4.30, 6.30†, 7.30, 9.30.  
 Aurora A. M. 6.10, 7.40, 8.40, 9.40, 10.40. P. M. 12.40, 1.40, 2.40, 4.40, 6.40, 7.40, 9.40.  
 Bond Lake Junction A. M. 6.25, 7.55, 8.55, 9.55, 10.55. P. M. 12.55, 1.55, 2.55, 4.55, 6.55, 7.55, 9.55.  
 Richmond Hill A. M. 6.40, 8.10, 9.10, 10.10, 11.10. P. M. 1.10, 2.10, 3.10, 5.10, 7.10, 8.10, 10.10.  
 Thornhill A. M. 6.50, 8.20, 9.20, 10.20, 11.20. P. M. 1.20, 2.20, 3.20, 5.20, 7.20, 8.20, 10.20.  
 York Mills P. O. A. M. 7.10, 8.40, 9.40, 10.40, 11.40. P. M. 1.40, 2.40, 3.40, 5.40, 7.40, 8.40, 10.40.  
 C. P. R. Crossing A. M. 7.30, 9.00, 10.00, 11.00, 12.00. P. M. 2.00, 3.00, 4.00, 6.00, 8.00, 9.00, 11.00.

Wednesday and Saturday evenings a late car leaves C. P. R. Crossing for Newmarket and intermediate points at 11.30 p. m.  
 \*Cancelled on each Wednesday and Saturday.  
 †Leave C.P.R. Crossing at 11.30 p. m. on Wednesdays and Saturdays.  
 †Connect with Schomberg & Aurora Railway.  
**EXTRA SERVICE ON ALL HOLIDAYS.**  
 W. H. MOORE, Manager

**WE KEEP IN STOCK**  
**Portland Cement**  
**Binder Twine**  
**Deering Harvesting Machinery**  
**Hardware of all kinds**  
**Tinsmithing promptly attended to**  
**Jacob Eyer & Son.**

**METROPOLITAN GROCERY,**

Next Door North of Waiting Room.

**UP-TO-DATE GROCERIES**

Fresh and Clean.

**Best Brands of Canned Goods**

Choice variety of

**CANDIES**

IN STOCK.

**ICE CREAM AND SUMMER DRINKS**

A SPECIALTY.

Splendid assortment of Boots and Shoes.

Livery in connection. Good horses and rigs. Rubber-tired buggies.

**T. B. LUDFORD, Proprietor**



**Can't You Save Money**

in the long run by investing in a really good article?

**Our Harness**

is the best obtainable.

**Our Prices**

are the lowest possible for the quality of the goods. Our horse goods and supplies will interest every horse owner.

**GEO. McDONALD, Richmond Hill**

**P. G. SAVAGE**

AGENT FOR

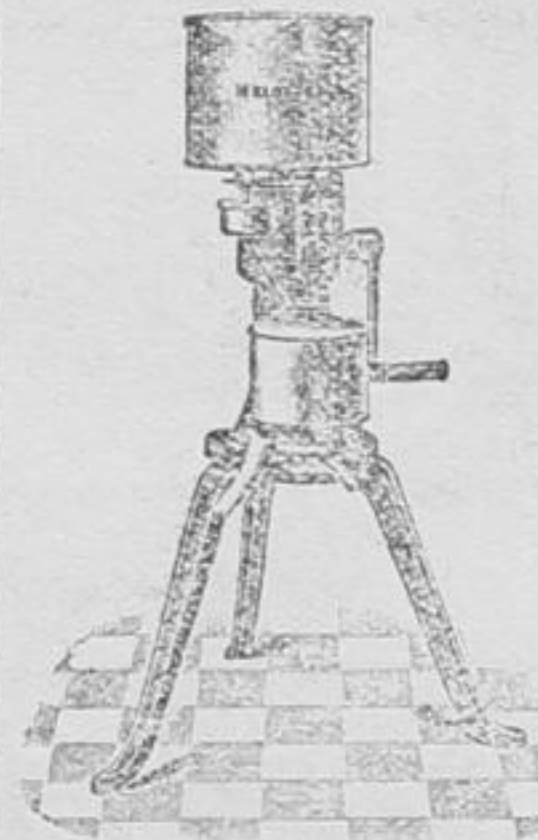
Confederation Life Ass'n  
 London Guarantee & Accident Co.

Also Mercantile Fire Co.  
 Western Norwich Union  
 York Mutual

New Williams Sewing Machine  
 And Karn Pianos

Furniture, Paints and Oils  
 Painters' Supplies

**MELOTTE SEPARATOR**



Square Gear. Over 125,000 in daily use. Machines placed on week's trial free.

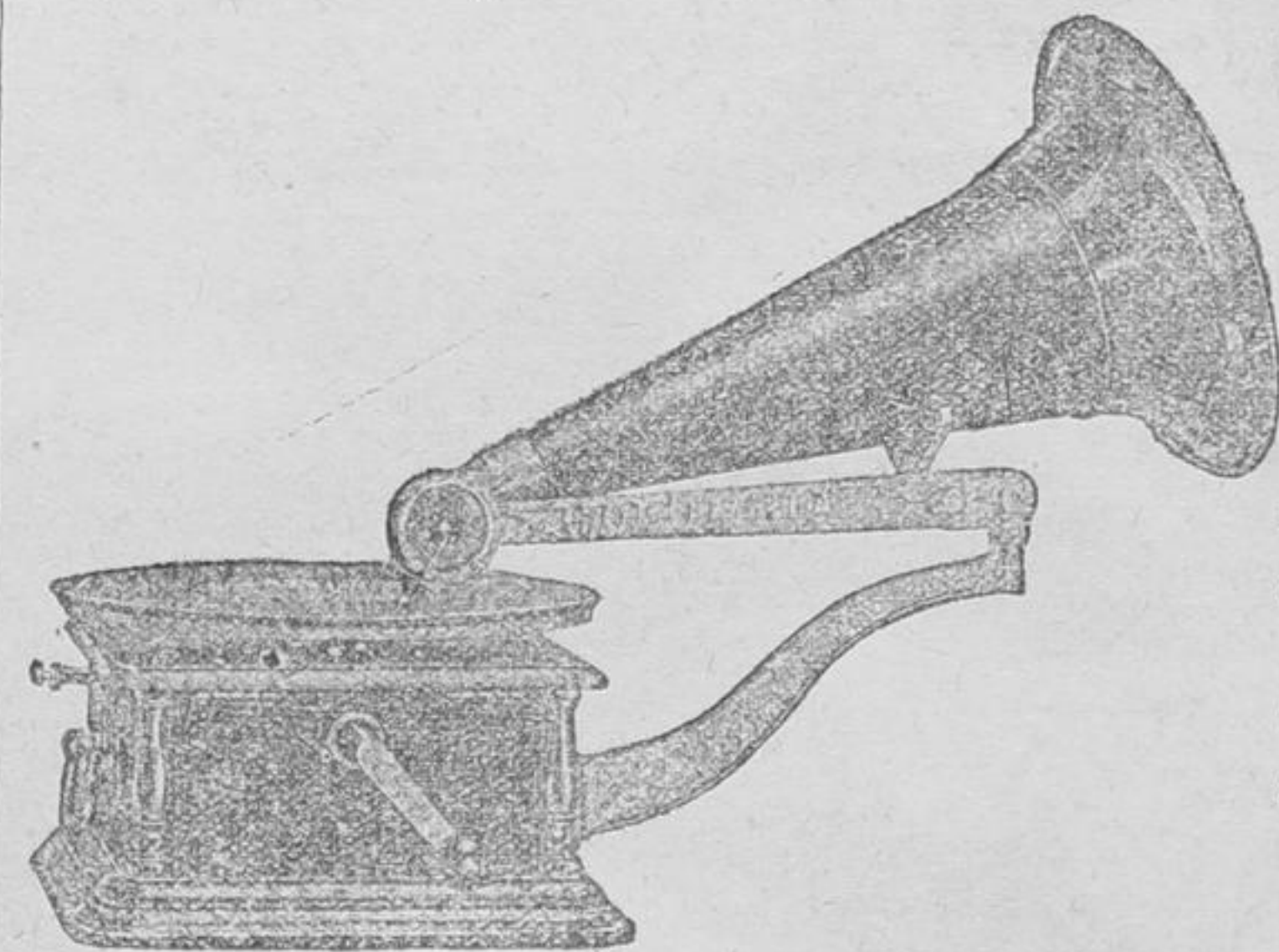
**New Williams Sewing Machine**

Silent, Simple, Easy-Running and Strong.



Automatic throw-off of belt. Equipped with ball bearings. Full equipment of latest attachments. Machines placed on trial free.

**Talking Machines, Records and Needles**



Easy terms given on all.

**W. C. PETHICK, Agent**  
 RICHMOND HILL.

Both disc and cylinder

Prices from 35.00 up.

Records from 35 cents up.

Come and hear them.

**LIVERY COAL WOOD**

Coal and Wood Delivered. Prices Right.

**GOOD LIVERY IN CONNECTION.**  
 Threshers' Coal on hand.

**Michael Bros.,**  
**Richmond Hill**

June 11, 1905

**RICHMOND HILL.**

INTERESTING INSTRUCTIVE.

**"Correct English—How to use it."**

A MONTHLY MAGAZINE DEVOTED TO THE USE OF ENGLISH.  
 JOSEPHINE TURCK BAKER, Editor.

Partial contents for this Month.

Course in English for the Beginner.  
 Course in English for the Advanced Pupil.  
 How to increase One's Vocabulary.  
 The Art of Conversation.  
 Should and Would: How to use them.  
 Pronunciations (Century Dictionary).  
 Correct English in the Home.  
 Correct English in the School.  
 What to say and What Not to Say.  
 Course in Letter-Writing and Punctuation.  
 Alphabetic list of Abbreviations.  
 Business English for the Business Man.  
 Compound Words: How to Write Them.  
 Studies in English Literature.

Agents Wanted.

\$1.00 a year. Send 10 cents for Sample Copy.

**CORRECT ENGLISH, Evanston, Ill**

**A GREAT SCHOOL**

**ELLIOTT Business College.**  
**TORONTO, ONT.**

Students from British Columbia, Saskatchewan and Manitoba on the west to New Brunswick on the east are in attendance this year. Distance is no hindrance to those who wish to get the best. Our graduates are always successful. Our facilities are unsurpassed. Commence now. No vacations. College open entire year. Magnificent catalogue free.

W. J. ELLIOTT, Principal.  
 (Cor. Yonge and Alexander Sts.)

Ripans Tabules cure constipation.  
 Ripans Tabules.  
 Ripans Tabules: for sour stomach.  
 Ripans Tabules cure nausea.

**STANDARD BANK**

Of Canada

**RICHMOND HILL**

Capital \$1,000,000  
 Rest \$1,000,000

**DEPOSITS**

Received in Savings' Bank Department and interest allowed at

**HIGHEST CURRENT RATES.**

Notice of withdrawal not necessary. All deposits payable on demand.

Money Lended on Farmers' Sale Notes. Blank Note Forms Supplied Free.

**General Banking Business Transacted.**

BANK OPEN FROM 10 to 3.

For other particulars call at the Bank

**H. H. LOOSEMORE,**  
 AGENT.

**Paints Mixed Paints Robertson's Paints**

Unequaled for

**Purity AND Durability**

There is nothing as good and nothing could be better.

"Imperial measure at same price as others."

Our stock of oils, paints, varnishes, whitening, zinc white, glues, putty, alabaster stains—full, and prices right.

**W. A. Sanderson**

Richmond Hill

**John D. Rockefeller**

knew a good thing when he struck oil, but not an inch more than the people who have made a new roof, out of an old one, by simply coating it with our Elastic Cement Pitch. If your roof is in need of repair, now is the time to do this kind of work. Write for our free expert advice, also for our pamphlets, which gives useful information.

**DO IT NOW**  
**DOMINION CEMENT PAINT CO.**  
 72 Queen St. W.  
 Toronto, Can.