

METROPOLITAN TIME TABLE

Between Toronto and Newmarket.
GOING NORTH
 Leave C P R Crossing at 6, 7.20, 9.40, 11.30 a. m.,
 1.30, 2.40, 4.00, 5.40, 7.45 p. m.
 Leave Richmond Hill 8.20, 10.30 a. m.; 12.20, 2.20,
 3.30, 4.50, 6.20, 8.35 p. m.
GOING SOUTH
 Leave Newmarket 7.30, 9.15, 11.15 a. m.; 2, 3.15,
 4.15, 6.00, 7.30 p. m.
 Leave Richmond Hill 7, 8.10, 9.55, 11.55 a. m.,
 2.40, 3.55, 4.55, 6.40, 8.10 p. m.

POST OFFICE NOTICE

Until further notice Mails will be closed at the Richmond Hill Post Office as follows:—
MORNING 8.00
EVENING 6.15
 N. B.—Registered Letters must be handed in at least Fifteen Minutes earlier than the above mentioned hours for closing.
OFFICE CLOSURE AT 7.30 P. M.
 M. TEEFY, Postmaster.

Village Directory.

Church of England—Services at 9 p. m. every Sunday.
 Presbyterian Church—Services at 11 a. m., and 7 p. m. Sunday School at 2.30. Prayer meeting Wednesday evening.
 Roman Catholic Church—Services on alternate Sundays at 9 a. m. and 10.30 a. m., and 7 p. m. Sunday School at 2.30. General prayer meeting Thursday evening.
 Richmond Lodge, A. F. & A. M.—Meets Monday on or before full moon.
 Court Richmond, A. O. F.—Meets second and fourth Friday.
 Ivy Lodge, A. O. U. W.—Meets third Wednesday of each month.
 Camp Elgin, S. O. S.—Meets second and fourth Wednesday.
 R. T. of Temperance—Meets first Wednesday of each month.
 Fire Brigade—Meets first Monday of every month.
 Public Library and Reading Room—Open Tuesday, Thursday and Saturday evenings.
 Epworth League—Meets every Friday.

LIVERY COAL WOOD

Coal and Wood Delivered.
 Prices Right.

GOOD LIVERY IN CONNECTION.

Enquire for rigs at the Dominion House.

Michael Bros.,
 Richmond Hill
 June 11, 1903

50 YEARS' EXPERIENCE

PATENTS

TRADE MARKS DESIGNS COPYRIGHTS &c.

Anyone sending a sketch and description may quickly ascertain our opinion free whether an invention is probably patentable. Communications strictly confidential. Handbook on Patents sent free. Oldest agency for securing patents. Patents taken through Munn & Co. receive special notice, without charge in the Scientific American.

A handsomely illustrated weekly. Largest circulation of any scientific journal. Terms, \$3 a year; four months, \$1. Sold by all newsdealers.

MUNN & Co. 361 Broadway, New York
 Branch Office, 625 F St., Washington, D. C.

4 1-2 PER CENT.

A large amount of private funds to loan on improved farm property situated in the County of York, at 4 1/2 per cent. For particulars apply to Lindsey, Lawrence & Wadsworth, Home Life Bldg., 60 Victoria St., Toronto
 Or at THE LIBERAL Office, Richmond Hill, on Saturday afternoons.

SUNNYSIDE FARM

The proprietor of Sunnyside Herd of Holstein Cattle and Breeder of Improved Chester white hogs, lot 32, 1st con. Markham (Thornhill) has for sale some good young stock. Thorough-bred bull and hog kept for service on the premises.
 D. G. GOODERHAM, Proprietor.

FRED MEYER,

—PRACTICAL—
HORSESHOER

—AND GENERAL—
BLACKSMITH,

HAS OPENED IN

Cooper's Old Stand,

RICHMOND HILL.

Light and Track Horses a Specialty. A trial solicited.

FRED MEYER.

New Advertisements.

WANTED

A man to represent "CANADA'S GREATEST NURSERIES" in the Village of Richmond Hill and surrounding country, and take orders for

OUR HARDY SPECIALTIES

In Fruit Trees, Small Fruits, Ornamental Shrubs, Roses, Vines, Seed Potatoes, etc.
 Stock true to name and free from East Jose Scale. A permanent position for the right man on either salary or commission.

Stone & Wellington,

FONTHILL NURSERIES,

OVER 800 ACRES,

TORONTO, CANADA.

Aug. 14. 4m

The Best Testimonial

The watches I sold in the past are giving their testimony.
 The result is that others come and ask for the exact same movement. This evidently shows that the watches I'm selling are a good kind and at the right prices.
 Inferior watches have been sold at a good price, by the seller falsely claiming that the watch was bought here, and thereby influencing the buyer that the watch was reliable.
 You will save money by purchasing here and getting the proper guarantee with each watch.

JERRY SMITH, PRACTICAL WATCHMAKER.



AUCTION SALE OF TIMBER BERTHS.

Public notice is hereby given that pursuant to authority of Orders in Council, the Red and White PINE TIMBER in the following townships, berths and areas, namely:—
 IN THE DISTRICT OF NIPISSING—the townships of HUTTON, CREELMAN, PARKIN, ALYMER, MACKELCAN, MCCARTHY, MERRICK, MULOCK, (part of), FRENCH (part of), STEWART, LOCKHART, (part of), GARROW (part of), OSBORNE (part of), HAMMELL and PHELPS (part of).
 IN THE DISTRICT OF ALGOMA—Berths Nos. 195 and 201, the Townships of KITCHENER and ROBERTS and Block "W" near Onaping Lake.
 IN THE RAINY RIVER DISTRICT—Berths G19, G21, C23, G29 and G33, and the following Berths with the right to cut and remove the pine, spruce, tamarack, cedar and poplar:—G4, G6, G17, G18, G24, G25, G26, G27, G28, G33, G35, G36, G37, G39, G40, G41, G42, G43, Berths Nos. S1, S2, S3 and S4, will be offered for sale by Public Auction at the Parliament Buildings, in the City of Toronto, on WEDNESDAY, the NINTH day of DECEMBER, 1903, at the hour of ONE o'clock in the afternoon.

Sheets containing terms and conditions of Sale and information as to Areas and Lots and Concessions comprised in each Berth will be furnished on application, either personal or by letter, to the Department of Crown Lands, Toronto, or the Crown Timber Agencies at OTTAWA, SAULT STE. MARIE, PORT ARTHUR, RAT PORTAGE and FORT FRANCES.

E. J. DAVIS,
 Commissioner Crown Lands.
 DEPARTMENT OF CROWN LANDS.
 TORONTO, July 29, 1903

N. B.—No unauthorized publication of this advertisement will be paid for.
 7-17

CANADIAN PACIFIC

FARM LABORERS' EXCURSIONS
WANTED
 SECOND CLASS

Will be run to stations on Can. Pac. in Manitoba and Assiniboia, West, South-west and North-west of Winnipeg as far as

MOOSEJAW, ESTEVAN \$10 and YORKTON

On AUGUST 17th from stations in Ontario east of Toronto to Sharnot Lake and Kingston and Midland Division of Grand Trunk North of Toronto and Cardwell.

One-way tickets to Winnipeg only will be sold, with a certificate extending the trip, before August 31st, without additional cost, to other points in Manitoba and Assiniboia as above. If purchase is engaged as farm laborers at Winnipeg, provided such farm laborers will work not less than thirty days at harvesting and produce certificate to that effect, they will be returned to original starting point at \$18 on or before Nov. 30th, 1903.
 Tickets not good on "Imperial Limited."

For further particulars and tickets apply to nearest railway agent.
 A. H. NOTMAN,
 6-2 Asst. Gen. Pass. Agent, TORONTO

Pure Paris Green

at

SANDERSON'S



Dr. McGeahey's **Heave CURE**
 For Broken-Winded HORSES
 Cures Heaves, Chronic Cough, and all Chronic Affections of the Throat and Lungs. The only medicine in the world that will cure the above disease, making the animal sound in wind and useful to his owner. Price, \$1.50
 Dr. McGeahey's **Kidney & Cough Powders** for all Acute Affections of the throat and lungs, such as Diphtheria, etc. For swelling and sticking of the legs, the result of hard driving, Kidney Trouble, etc., one dose will relieve, and one box will cure. Price, 50c.
THE DR. MCGEAHEY MEDICINE CO.,
 Kempville, Ont.

McGeahey's Condition Blood Powders &c. Sold by Geo. McDonald, harness-maker, Richmond Hill, and all medicine dealers throughout England, the United States and Canada. 22-1-03

W. HEWISON, HOUSE PAINTER, Glazier, Grainer and Paper-Hanger.

Calls from a distance promptly attended to.
 RESIDENCE, RICHMOND HILL

RICHARDSON HOUSE MAPLE.

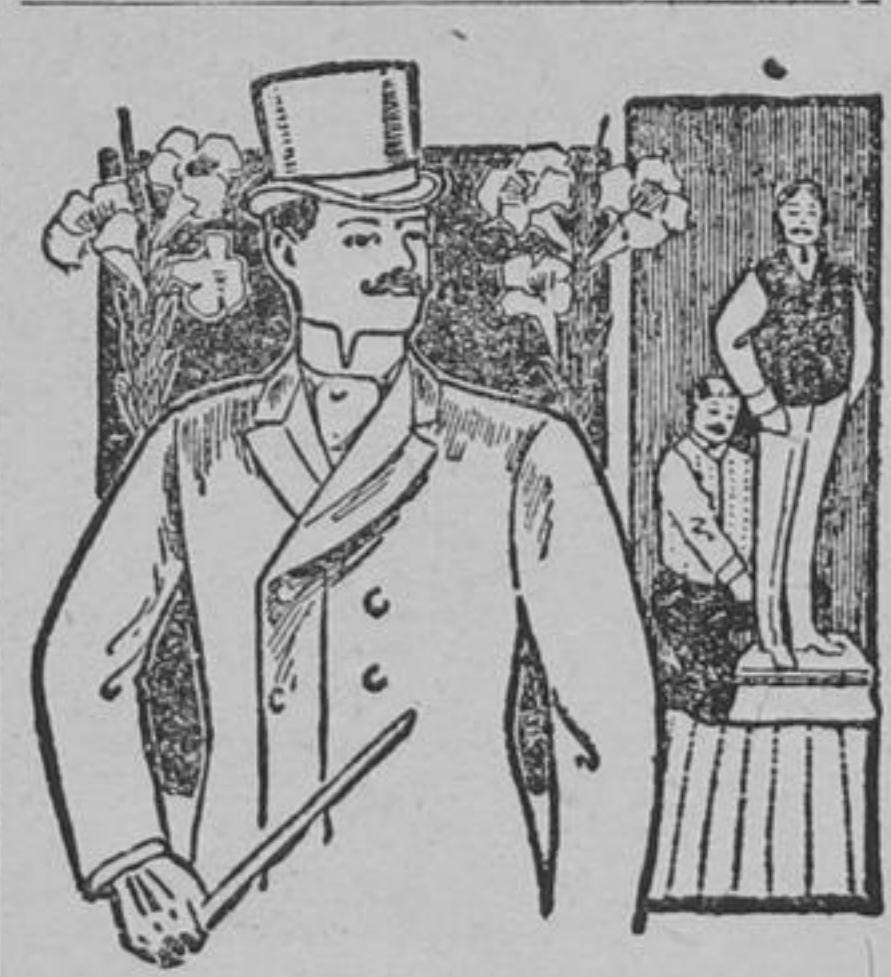
THOROUGHLY REFITTED.
 Every Accommodation for the travelling public.

FREDERICK DACK, Prop

PALMER HOUSE RICHMOND HILL,

Remodelled, and newly furnished throughout One of the most convenient and comfortable hotels on Yonge Street. Every modern convenience. Sample rooms for commercial travellers. An ideal stopping place for riding or driving parties, bicyclists, or farmers going to or returning from market. Electric cars pass the door. Livery in connection

TERMS \$1.00 PER DAY.
JOHN PALMER, Prop



A. J. HUME,

Merchant
 Tailor

Richmond Hill

Estray Notice

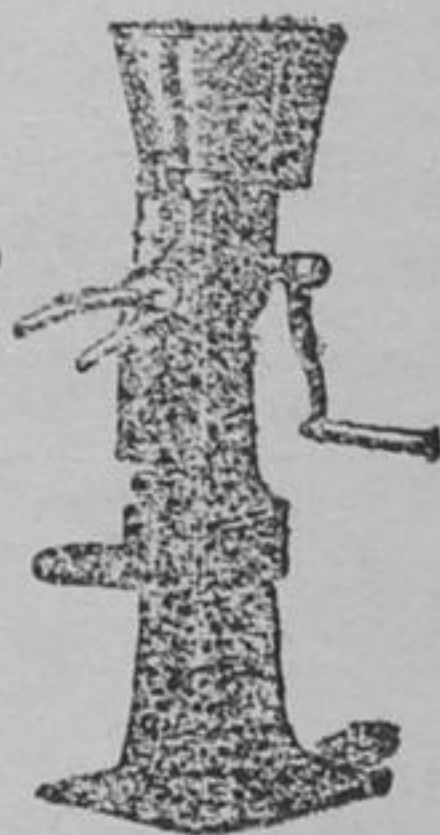
Came on the premises of the undersigned, one ewe and one lamb. Owner is requested to prove property, pay expenses and take them away.
 ROBERT HENDRY,
 Newtonbrook P. O.

July 20, 1903. 4-4

'THE LIBERAL.'
 \$1.00 IN ADVANCE.

RICHMOND HILL HARDWARE STORE

Sells everything in season.
 Machine Oil, the best.
 Harvest Mits, all prices.
 Threshers' Mits, all prices.
 Oil Stoves, Wick and Wick-less.
 Magnet Cream Separators, made in Canada.
 Louden Bars-Door Hangers, the best yet.
 Hay Forks.
 Scythes.
 Rakes.
 Handles.
 Eavetroughing.
 Tinware in stock or made to order.
 Hot Air Furnaces, and all kinds of Tinsmith work done right.



Repairing Promptly Done

C. & E. MASON

When You Buy

Harness you want the harness to fit the horse. We make a specialty of fitting harness, and

You Will Be Pleased

With any purchase you make here. All our harness is made from oak tanned leather, the trimmings are of the best quality and the workmanship perfect. You will save both trouble and money when you buy here.
 Now is the time to order for the fall.



Geo. McDonald, Richmond Hill

Life Insurance

Great Remnant Sale of Wall Papers.

Clearing at low prices. These are new designs. Call and see them.
 Ready-Mixed Paints in all colors.
 Now is the time to do your painting.
 Painters' Supplies.
 Groceries in stock. All fresh.

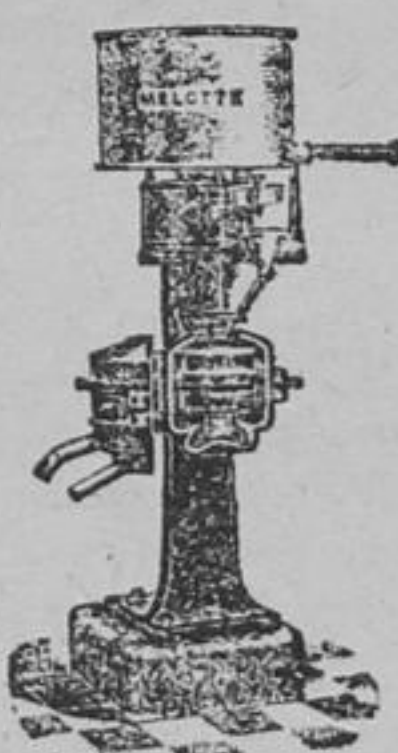
P. G. SAVAGE & SON

Fire Insurance

WANT ANYTHING

Stronger to convince you of the merits of any article in daily use than the unsolicited testimony of the people who use it.

The Melotte Cream Separator



Has stood the test for years and has all the British Empire at its back in testifying to its merits in everything that goes to make it the most perfect Separator in the market to-day. The Melotte has proven itself the best by test for appearance, for durability, for convenience, and ease of operation. Takes 33 per cent. less power than its leading competitor.

For sale by
D. Hill, Richmond Hill,
 And by
Cousins & Rose, Maple

To the Public

Mr. Thos. Ludford, our new and popular store-keeper, begs to thank the public for the kindness of their patronage, and wishes to advise all that he handles

H. D. Dennie's Famous Dauntless and L. Innes & Sons' Leader,

The two most popular brands of Flour on the market. These brands produce the finest quality of bread, and for pastry the greatest success can be achieved. Give them a trial and you will use no other.
 For sale at the closest prices by

T. B. LUDFORD,
 METROPOLITAN STORE