

## Workers begin repairs

Repair of the Rotary Pier in Midland is beginning.

At a cost of more than \$1 million, the three sides of the pier will be covered with a new "skin" of 45-foot by 10-foot sheets of steel.

"The residents of Midland are going to hear a pounding noise" (as the steel sheets are driven into the harbor floor), harbor committee member Jim McCready said.

The steel sheets will be placed 30 inches from the existing dock's sides and attached to the dock by bolts. The 30-inch gap

will be filled with gravel, and capped.

Eleven truckloads of steel will be used.

The Rotary Pier has been closed to pedestrians and boaters since June 30, 1988.

Fill supporting the dock's asphalt top escaped through a hole in the dock wall below the waterline. An area of the dock's surface collapsed into the cavity that resulted.

Because the dock was deserted, just after sunrise, no one was injured.

The next day, July 1, hundreds of people

crowded into the area for the annual Midland Rotary Club barbecue. The Rotary Pier was closed off.

Repairs are scheduled to take 15 weeks. The federal government owns the dock and is paying for the repair.

The closure of the Midland town dock's biggest pier through the busiest months of July and August meant loss of income for both the harbor committee and the downtown businesses visited by boaters. The fall boat show was cancelled for lack of room.



## The great and the small

Team Captain Steven Moreau, Grade 8, takes a break with Lee Anne Bowman, Grade 1, after the luge event (actually crazy carpets) at the Victoria Harbour Public School "Winter Olympics" last Friday.

## Property levy increases

Simcoe County Council approved a \$10,784,970 levy last week - an increase of \$1,691,687, or 18.6 per cent over last year - without a whimper.

Even those few committee chairman whose budgets got bitten, took it bravely.

But the mill rate increased by only 6.1 per cent. A taxpayer, who paid the county \$100 last year, will pay \$106.10 this year, on the same assessment.

Additional assessment coming into the county coffers pulled down the mill rate, according to Elizabeth Letourneau, county treasurer.

She says, in setting the mill rate, the county estimated ten per cent more funds coming in from property assessment. Last year, it rose 13.4 per cent. The final count comes in March 15.

Expenditures increased to almost \$1.5 million. Revenues went down just over \$50,000.

Health and social services account for 51 per

cent of the county budget and about 60 per cent of the increase.

The museum accounted

for about 30 per cent of the increase, approximately 11.5 per cent for operating expenses, the

rest for a new tractor and completion of building improvements that ran into cost overruns.

## Wyebridge school closing this year

Wyebridge's public school will close permanently at the end of this school year. The decision was finally taken by the Simcoe County Board of Education last Wednesday night.

Pupils at the school will be bused to Wyevale where the kindergarten to Grade 6 school will become a full K-8 institution.

Until this year,

Wyebridge pupils left the two classroom school at the end of Grade 4 and transferred to Parkview in Midland. Parkview was also the destination of children leaving Wyevale at the end of Grade 6.

According to Rod Rankin, superintendent of area schools, the present Wyebridge school was built in 1962 and accommodates 52 pupils.

Current enrolment is 42 and projections suggest the number would drop if the school remained open. Already housing board of education offices, by September it will be the office for the entire north region of the county.

There has been a public school in Wyebridge since the middle of the last century.

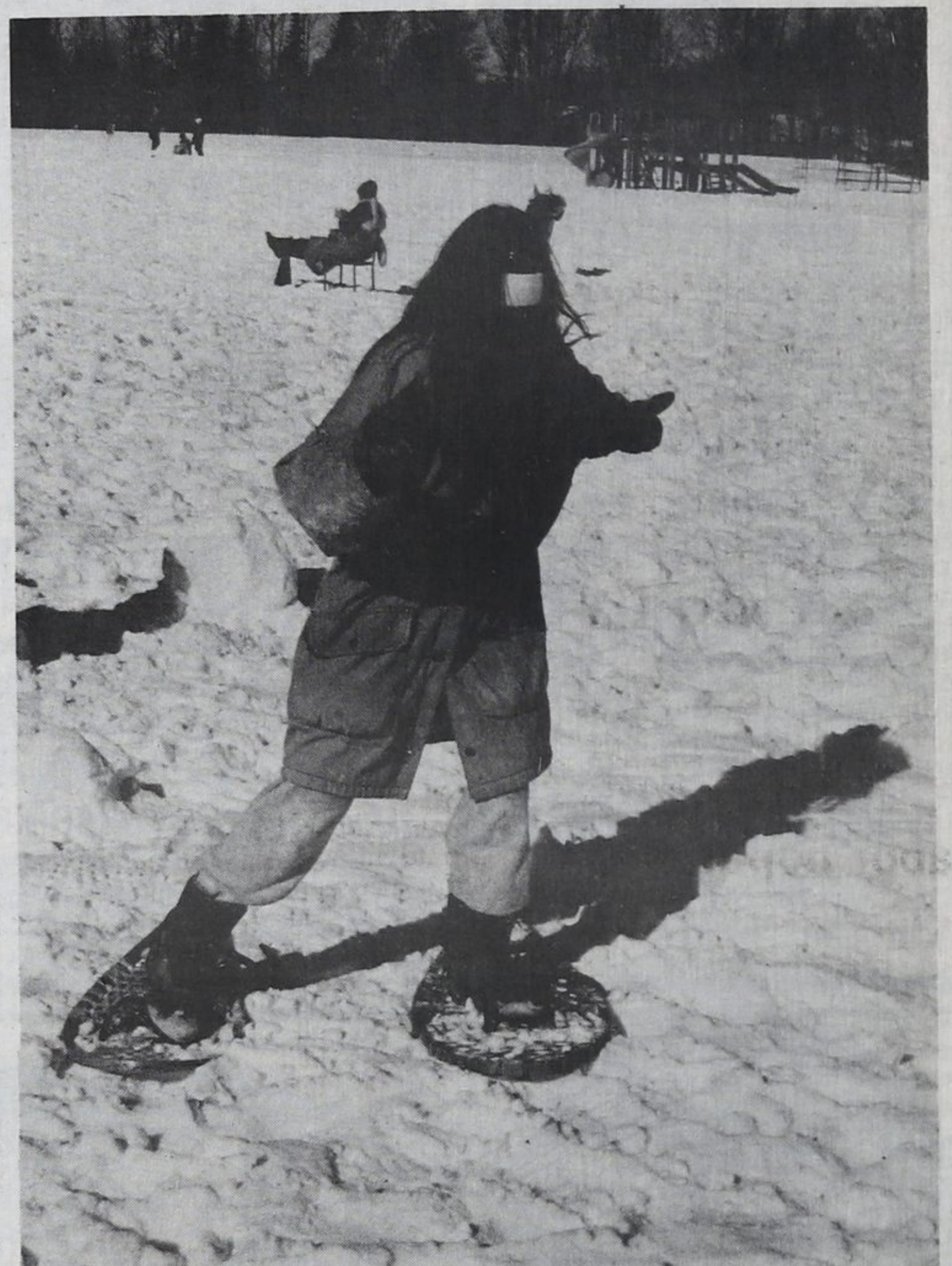
## Bridge Results

Several Midland Bridge Club members have been absent because of vacation in warmer

climates. The club welcomes anyone interested in playing duplicate bridge.

Games are held each Wednesday beginning at 7 p.m. in the Midland Community Centre.

Recent winners: Sylvia McLarney and Nancy Cardwell, 65; Tom Gordanier and Jim Walsh, 60; Mary and Bill Tucker, 42.5; Wendy Harris and Dave Vinegar, 42.5; Dean Bigioni and Jay Jelinek, 40.



## Go, Tia go!

Tia Morley, Grade 6, is negotiating a curve in the snowshoe race at the Victoria Harbour Public School "Winter Olympics." She practiced in a 3-hour trek during a recent class live-in at Sainte Marie among the Hurons.

## Library News

### Escape 'blahs' with a book

Do you have the winter "blahs?"

If so, consider the invitation to inspect its Midland Public Library's books on garden plann-

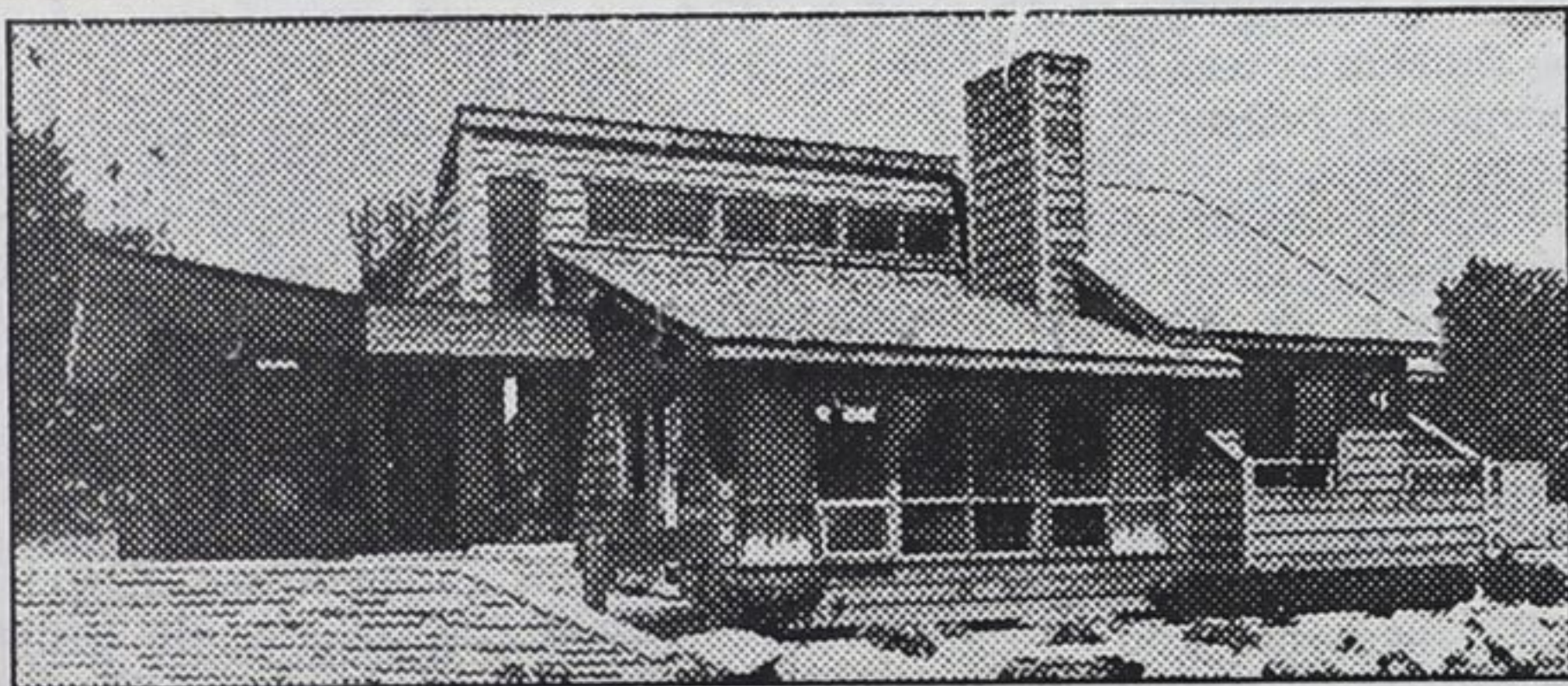
ing, its golf books and magazines, and a large collection of travel books. New books:

#### FICTION

The Last Coin, James P. Blaylock; Rivals, Janet Dailey; Scary Kisses, Brad Gooch; The Outlaws of Sherwood, Robin McKinley; American Appetities, Joyce Carol Oates; A Man of Little Faith, Rick Salutin.

#### NON-FICTION

The Man Who Was M, Anthony Masters; Bugialli on Pasta, Giuliano Bugialli; Dylan: A Biography, Bob Spitz; The All-New Hockey's 100, Stan Fischler; How to Write Romances, Phyllis Taylor Pianka; The Great Wiped Out North, Allan Gould.



MUSKOKA

### Building a home?

Viceroy's exciting new designs for 1989 are not only dazzlingly beautiful, but they also possess the finest specifications in America. And they are extremely reasonable in price! Call or visit us today for more information.

Send for your Viceroy homes catalogue now!  
ENCLOSE \$10.00

NAME: \_\_\_\_\_  
ADDRESS: \_\_\_\_\_ APT. \_\_\_\_\_  
CITY: \_\_\_\_\_  
POSTAL CODE: \_\_\_\_\_ PHONE: \_\_\_\_\_  
LOCATION OF LOT: \_\_\_\_\_

**Viceroy** The Finest Homes Of Them All...

Independently Distributed by

## A & R CARPENTRY

13 Years Experience Building Viceroy Homes  
(705) 322-0152  
Hwy. 93  
Waverley, Ont.

Mailing Address  
R.R. #1, Wyebridge  
Ontario L0K 2E0



THE WATERGATE IS RE-OPENING  
FRIDAY, MARCH 3rd

We Welcome you to our specialties:

Steak and Shrimp

\$11.95

Rainbow Trout

\$11.25

FOR RESERVATIONS: 549-8671