



Moving Mazda

Just two years after becoming Simcoe County's biggest Mazda dealer Northwood Mazda is still on the move.

But this time the move is across town: Northwood has simply run out of space at the former Cullingford location on Yonge Street in Barrie so it is moving into a custom designed facility -- just completed -- on Essa Road by the Barrie Raceway.

The actual move is scheduled for this weekend and when the 200 Essa Road showrooms open, Northwood is promising "more of everything" for its customers.

Much of the dealership's success is attributable to its rapidly established reputation for reliability and painstaking service.

But underlying everything is the success story of Mazda cars themselves.

Performance and stamina are the hallmarks of the Mazda: they

have the sort of solidity and careful engineering rarely found on mass-produced vehicles at less than luxury import prices.

A recent addition to the Mazda stable completes a range of vehicles from the sporty through the safe dependable family car (with guts to spare) to the seven passenger van-camper.

A late entrant into this increasingly populous field, the Mazda MPV has caught up with and passed the competition in one bold step.

With an 18-valve, three-litre V6 engine that will haul its capacious chassis from zero to 100 km/h in 12.8 seconds, the MPV is as much fun to drive as it is practical.

The 2.6 litre engine is only slightly less exciting.

Visit Northwood at its new location and test drive one of their stock of new cars.

More car security

Cont'd from pg. 14

compasses the same integral continuity adopted throughout Mazda's passenger car lineup. The passenger compartment is fully upholstered and complemented by color co-ordinated trim, and the flush roof-line contributes to a spacious and airy environment. The extended hood produces a greater sense of security than with some import models where the driver and front seat passenger sit virtually at the front of the vehicle.

The MPV may be specified with either three or two row seating arrangements, accommodating seven

or five persons, respectively, with a walk-through facility between the front and rear rows.

Mazda offers two engine selections: a 2.6 litre inline, four cylinder engine, and a 3.0L V6 engine. While all model MPVs are well-appointed, a luxury model equipped with cruise control, power windows and door locks, aluminum wheels, dark bronze tinted glass, color-keyed exterior trim and an upgraded sound system is also available.

Future plans for the MPV include the introduction of a 4x4 model scheduled for the spring of 1989.



11

MILLION TONS OF SALT WILL BE DUMPED ON ROADS THIS WINTER

Salt eats cars...Ziebart wins the fight against salt.

Salt and moisture attack every part of a car: places you can see and places you can't. That means rust forms inside and underneath, as well as on the outside.

While most of today's cars are protected better against rust, many critical areas are still left completely unprotected.

Only Ziebart Rust Protection covers the entire car: top to bottom, bumper to bumper... Every nook, cranny and crevice where salt and moisture attack.

Ziebart has been the leader in rust protection for 25 years. And our warranty is good for the life of your car, transferable to a new owner if

you sell your car. In the unlikely event your car does rust, we'll repair it, free of charge.* Before salt and moisture attack, get Ziebart Rust Protection and win the fight against rust.

ZIEBART GOLD SHIELD PROTECTION PACKAGE

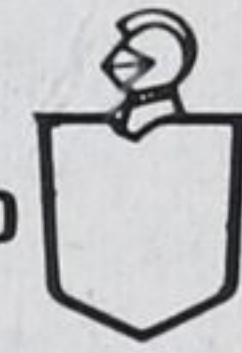
SAVE \$100

- Rust Protection with Sound Deadener
- Paint Protection
- Fabric Protection

*See dealer for details

224 Bradford St.,
Barrie, Ontario
728-7901

453 Hume St.,
Collingwood, Ontario
445-1116



Ziebart
CAR IMPROVEMENT SPECIALISTS

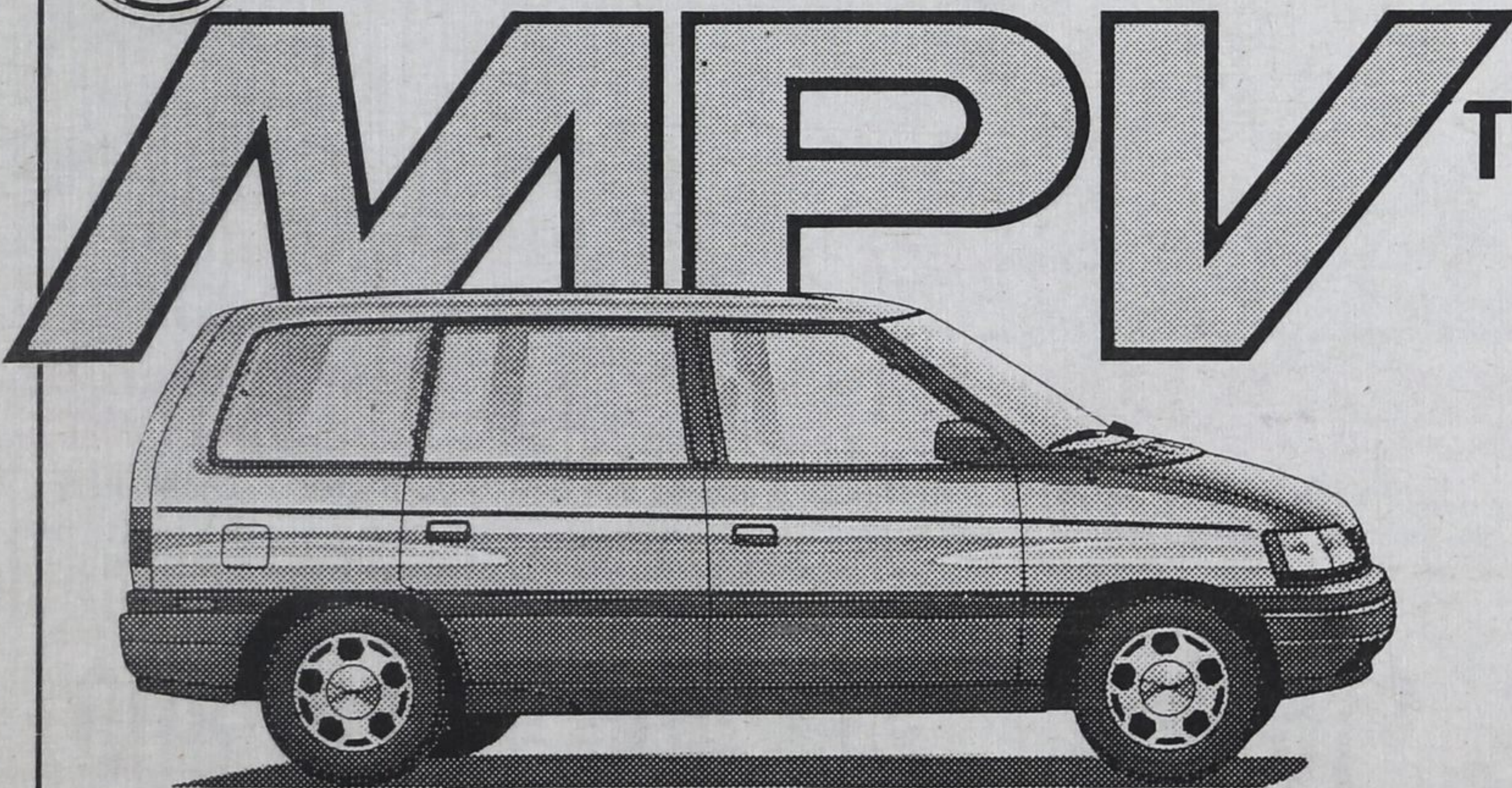
NORTHWOOD mazda



HAS MOVED

To 200 Essa Rd.
BARRIE

Visit our
New Showroom
and
Test Drive
The New MPV
Today!



200 Essa Rd.
(at Hwy. 400)
BARRIE

SALES • SERVICE
PARTS • LEASING
737-3440



NORTHWOOD mazda