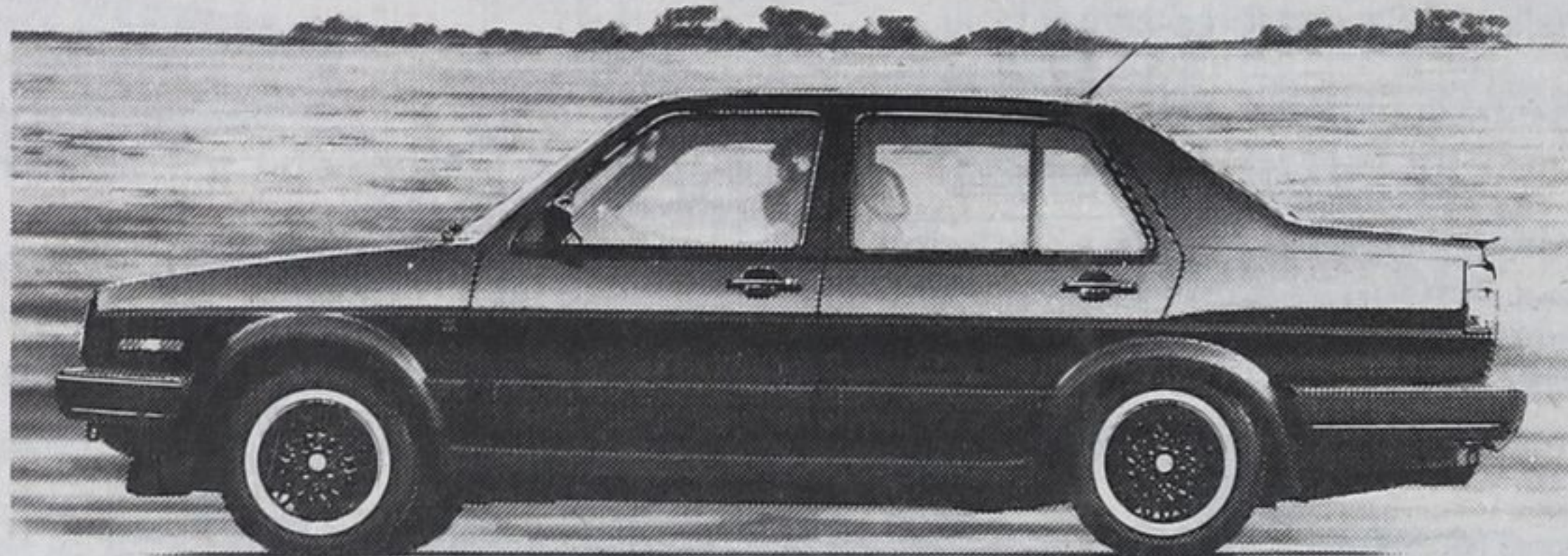




For those who like to come in first, come in fast.



With only five hundred 1989 model Jetta Trophy 16V sport sedans available in Canada, only the fastest will join the winner's circle.

It's a 5-speed, 4-door sedan with Recaro seats that comes in Midnight Blue and goes for the first time ever with a 16-valve, 123 horsepower, fuel-injected 1.8 litre engine.

Its racy spirit is assisted by a 4-wheel independent sport suspension and BBS alloy wheels, at a price that will get your heart racing to see one. If you like to come in first, come in fast.



Autosport Orillia

281 Coldwater Rd. West

325-6107 ORILLIA 835-3449

Four-wheel disc brakes standard equipment on car

Cont'd from pg. 2

153 horsepower at 5,600 rpm. To effectively use its additional horsepower, the V6 Camry features upgraded wheels, tires and brakes. Compared to 4-cylinder Camrys, wheel size has been increased from 14 to 15 inch diameter and tire size from 185/70 to 195/60. Four-wheel disc brakes are standard equipment on the V6 Camry, replacing the front disc/rear drum braking system found on 4-cylinder FWD models. Manual air conditioning is a standard feature on V6 Camrys.

For added safety and all-weather performance, the Camry Sedan and Sedan LE is available with full-time four-wheel drive (4WD) which features a manual centre differential lock. Just as the front and rear differentials compensate for the difference in wheel rotation speed from side to side resulting from changes in road surfaces or cornering, the centre differential compensates for front to rear differences. If one wheel spins due to a loss in traction, a driver-actuated centre differential lock button will re-distribute power to the front or rear wheels which are not spinning.

A new addition for 1989, improved braking performance will be possible with optional A.B.S. (antilock Braking System) on LE 4WD and V6 Camrys. Full-time 4WD Camrys with A.B.S. will be equip-

ped with viscous coupling-controlled four-wheel drive instead of the mechanical differential with centre lock differential button found on Camrys with conventional braking systems.

Camry is available with the following transmission choices: Sedan, Sedan LE, Sedan 4WD, Sedan LE V6 and Wagon may be fitted with either 5-speed manual overdrive or 4-speed automatic overdrive transmission. Sedan LE 4WD, Wagon LE and Wagon LE V6 are available with four-wheel automatic overdrive transmission only.

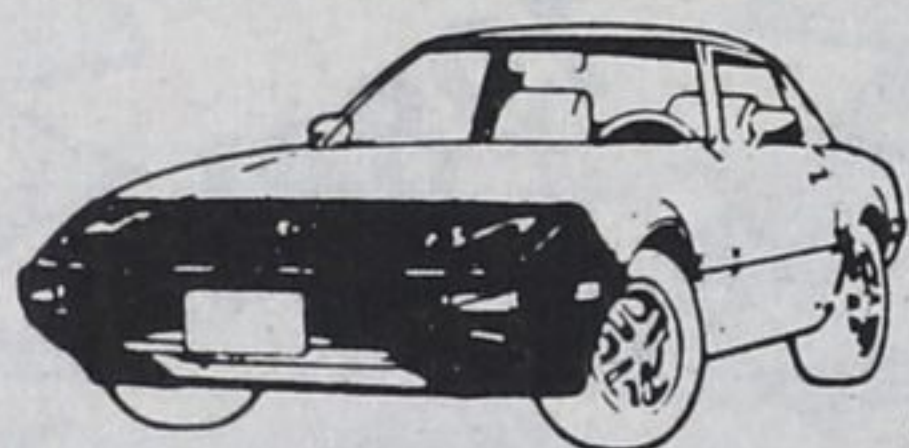
"In less than two years on the Canadian market, the current generation Camry has earned for itself two important laurels, the Best New Imported Sedan for 1987 according to the Automobile Journalists Association of Canada and the prestigious Canadian Automobile Association Pyramid, or Used Car Performance award based on owner satisfaction, mechanical reliability and repair costs. The further refinement of Camry, as seen in the 1989 models, should guarantee its popularity for years to come" adds Dupuis.

Camry Sedan prices start at \$16,198 while the Wagon is priced from \$17,608. The Sedan 4WD is priced from \$18,668 and V6-powered models start at \$22,228.

HURONIA

AUTO

GLASS LTD.

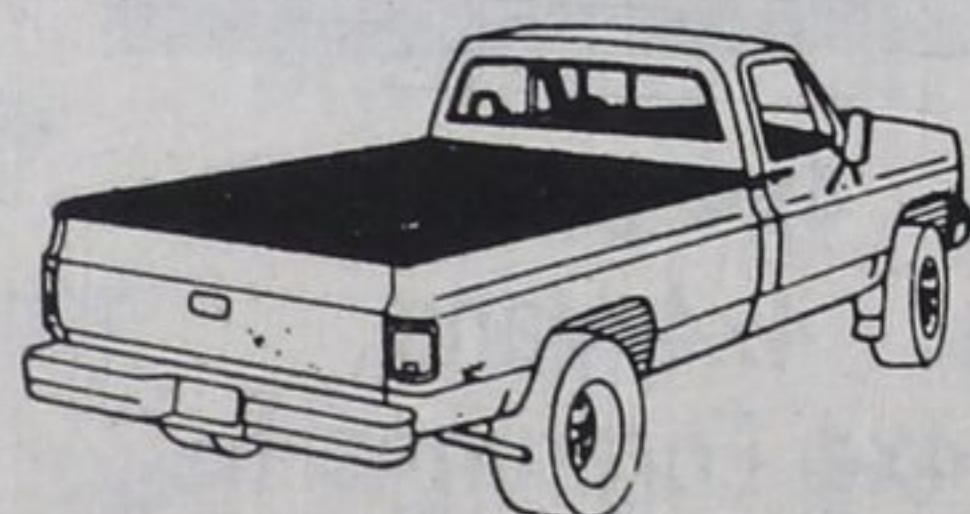


LeBra™

...the Ultimate Front End Cover for sport cars, trucks, vans, Jeeps!

FROM \$11700 & up

- Protects against gravel, rock, off-road damage.
- Unique two-piece design lets you open hood without removing cover.
- Individually tailored to specific vehicles for tight, smooth fit.
- Mildew-resistant, "breathable" vinyl — helps prevent moisture problems.
- Easy to install, no need to remove when it rains or snows.
- Most popular models include attractive, durable car-name decal that smooths on in seconds.
- New soft flannel binding protects against chafing.



FROM \$14900 & up

TONNEAU COVERS

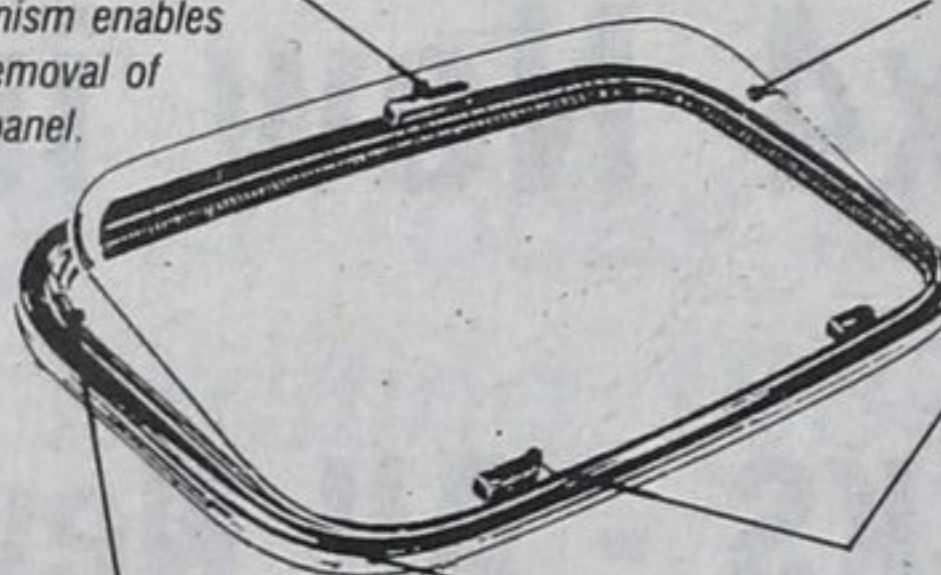
- ...your choice of hook & loop or snap fastening system!
- Hook & loop strips seal cover to bed for no-gap, no-leak, drum-tight fit.
 - Snap-fastening cover—good weather protection at most economical price.
 - Tough, tear-resistant, vinyl-impregnated fabric can be custom-cut to fit around roll bars; won't ravel, tear or fray. Support bow included.

CARS • TRUCKS • BOATS EXPERT GLASS INSTALLATION & REPAIRS

The Ultimate in SUNROOFS

Flush-fitting handle with quick-release mechanism enables easy removal of glass panel.

Choose your glass - either stylish reflective bronze or classic screen print.



Safety hinges ensure glass is totally secure when open and tamper-proof when closed.

Complete weatherproofing is guaranteed by a proven cellular expanded EPDM seal.

Unobtrusive low-profile exterior for that really clean built-in look.

AVAILABLE IN TWO SIZES

15''x30''

17''x32''

- Two year warranty against leakage
- Pop-up or removeable glass
- Tamper-proof latches
- Quality weathertight seals
- Same day installation service
- Fits most cars or trucks
- Wind deflector and glass storage bags available

\$19900 & up installed

HURONIA AUTO GLASS

821 Vinden St., Midland

526-7631

If Busy Call: 526-6542

We also carry Automobile Accessories

Trailer Hitches Supplied & Installed

Running Boards for all makes of trucks

Auto Glass Auto Glass Auto Glass Auto Glass