

# It's a full-time four-wheel car

"Known for its graceful good looks and comfortable seating for five since its introduction in 1987, the present generation front-wheel drive Camry has seen the continuous addition of features which improve driving performance" comments Toyota Canada Inc. senior vice president Hector Dupuis.

"In 1988, a full-time four-wheel drive model and a V6 engine option was made available. Now for 1989, optional A.B.S. (Antilock Braking System) on Camry LE V6 and 4WD models continue the Camry story of refinement." Available in Sedan and Wagon

body styles, Camry offers advanced technology with two fuel efficient twin cam/multi-valve power units with electronic fuel injection. The standard Camry power unit is an electronically fuel injected 2 litre, twin cam/16-valve 4-cylinder producing 115 horsepower at 5,200 rpm. This unit powers both Camry Sedan and Wagon models as well as the 4WD Sedan and Sedan LE. In addition, both Camry Sedan LE and Wagon LE are available with a larger, electronically fuel injected, 2.5 litre, four cam/24-valve V6 power unit producing

Cont'd on pg. 6

1988 Toyota Camry Sedan

## A new kind of import

In keeping with tradition, Hyundai has introduced yet another automobile loaded with value, luxury and practicality.

The 1989 Sonata is sure to become one of the most popular

import automobiles of our time.

This new experience in driving pleasure comes complete with a powerful, fuel-efficient 2.4 litre over-head cam engine - the largest standard engine in its league.

The Sonata features a roomy interior, 10 cubic feet more than its competitors. This auto can comfortably accommodate five adults with more head, leg and elbow room.

Reclining front bucket seats are designed for comfort to both the front and rear passengers. Add the luxury of full carpeting throughout and you can't find a more relaxing or practical way to travel.

Hyundai is well-known for its standard equipment package and the 1989 Sonata package is no exception. Features such as: tilt steering, power steering, power trunk release, two-speed, intermittent wipers and rear window defrosters are all standard features and represent hundreds of dollars in value to the car-buyer.

With the Hyundai Sonata, you can now have more for less. Hyundai's reputation depends on producing a high-quality automobile that is reliable and affordable. You can test-drive the many new 1989 Hyundai's at Collingwood Hyundai.

**ALLANDALE SELECT**  
**USED CARS**  
**734-1200**

### OPENING SPECIALS

1987 Plymouth LE  
4 dr., air, 24,000 km,  
bal. fact. warranty.  
**OPENING SPECIAL**  
**\$7,995**

1983 Audi 5000 Coupe,  
Balance of extended  
warranty, fully  
equipped.  
**OPENING SPECIAL**  
**\$6,995**

1985 Cherokee Larado  
2 door, automatic, 4  
wheel drive.  
**OPENING SPECIAL**  
**\$12,995**

1985 CJ7  
6 cyl., 5 spd.,  
hard and soft top  
**OPENING SPECIAL**  
**\$12,995**

1986 Dodge Aries  
4 door,  
low mileage.  
**OPENING SPECIAL**  
**\$5,995**

1985 Ford Ranger  
5 speed,  
mint condition  
**OPENING SPECIAL**  
**\$6,995**

1984 Mercury  
Cougar LS  
loaded with many  
extras.  
**OPENING SPECIAL**  
**\$6,995**

1984 Cherokee  
Pioneer  
2 dr., 4 wheel drive, 5  
speed.  
**OPENING SPECIAL**  
**\$11,995**

1981 Chev 1/2 Ton  
V8, 3 speed.  
**OPENING SPECIAL**  
**\$3,995**

**BARRIE'S NEWEST CAR LOT**  
**53 Bradford St.,**  
**Barrie**

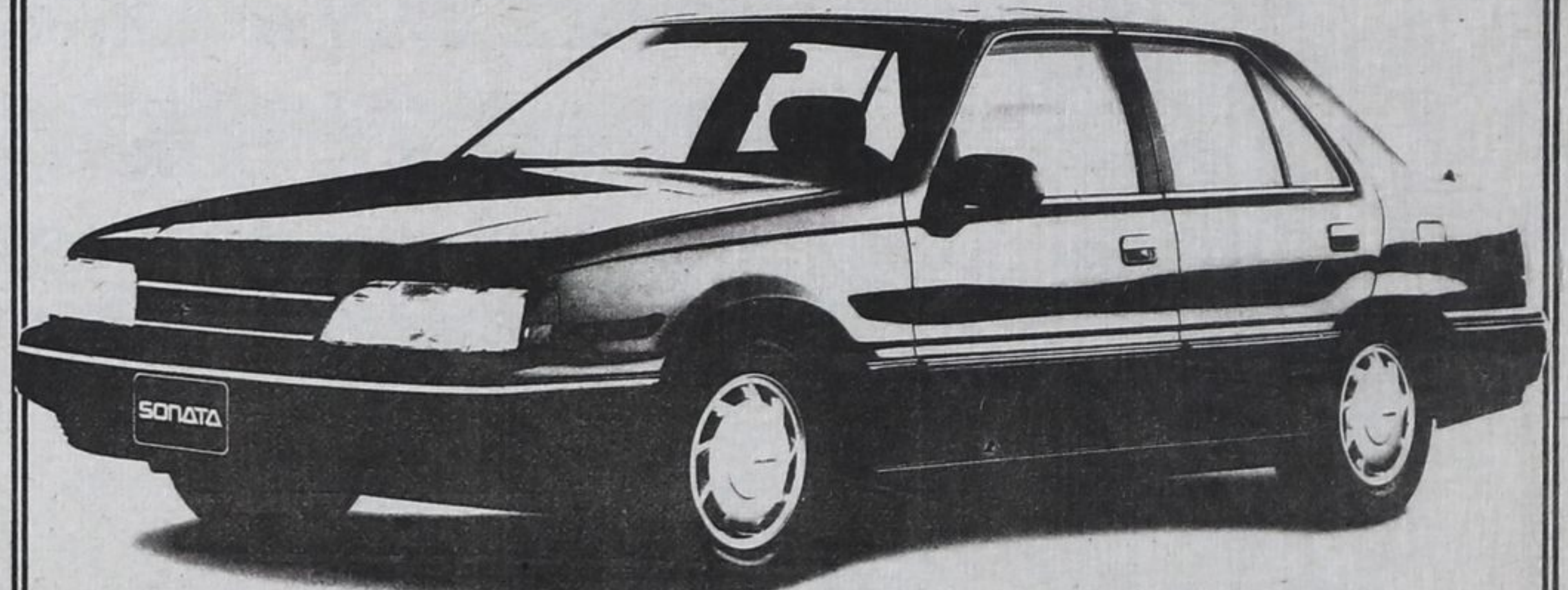
### ANNOUNCEMENT



Peter Watson is the Sales Manager at Allandale Select Used Cars, 53 Bradford St., Barrie.

Allandale Motors has recently expanded their used car lot to this new location.

## INTRODUCING SONATA FROM HYUNDAI



**Settle for more power.**  
The all-new 1989 Sonata puts 110 horsepower of high-torque performance at your control. The result is rather exhilarating. Just touch the gas pedal and see for yourself. You'll be whisked away by the biggest standard engine in its class - 2.4L of overhead cam power - bigger than Honda Accord, Toyota Camry or Mazda 626. And with electronic multi-port fuel injection, neither fuel efficiency nor acceleration is compromised.



**Settle for more.** What's more, Sonata comes standard with a manual 5-speed overdrive transaxle. An optional 4-speed overdrive automatic transaxle with electric lock-up torque converter is also available. Either way, you'll experience 138 ft/lbs of high-torque power for smoother, more aggressive acceleration throughout the entire power band. Performance that is as exciting in the city as on the highway. So test drive a Sonata and see how much there is to settle for. You'll discover performance is only the beginning.

**COLLINGWOOD**



**Collingwood Cars Inc.**  
**307 Pretty River Parkway**  
**Collingwood, Ontario**  
**(705) 444-1414**