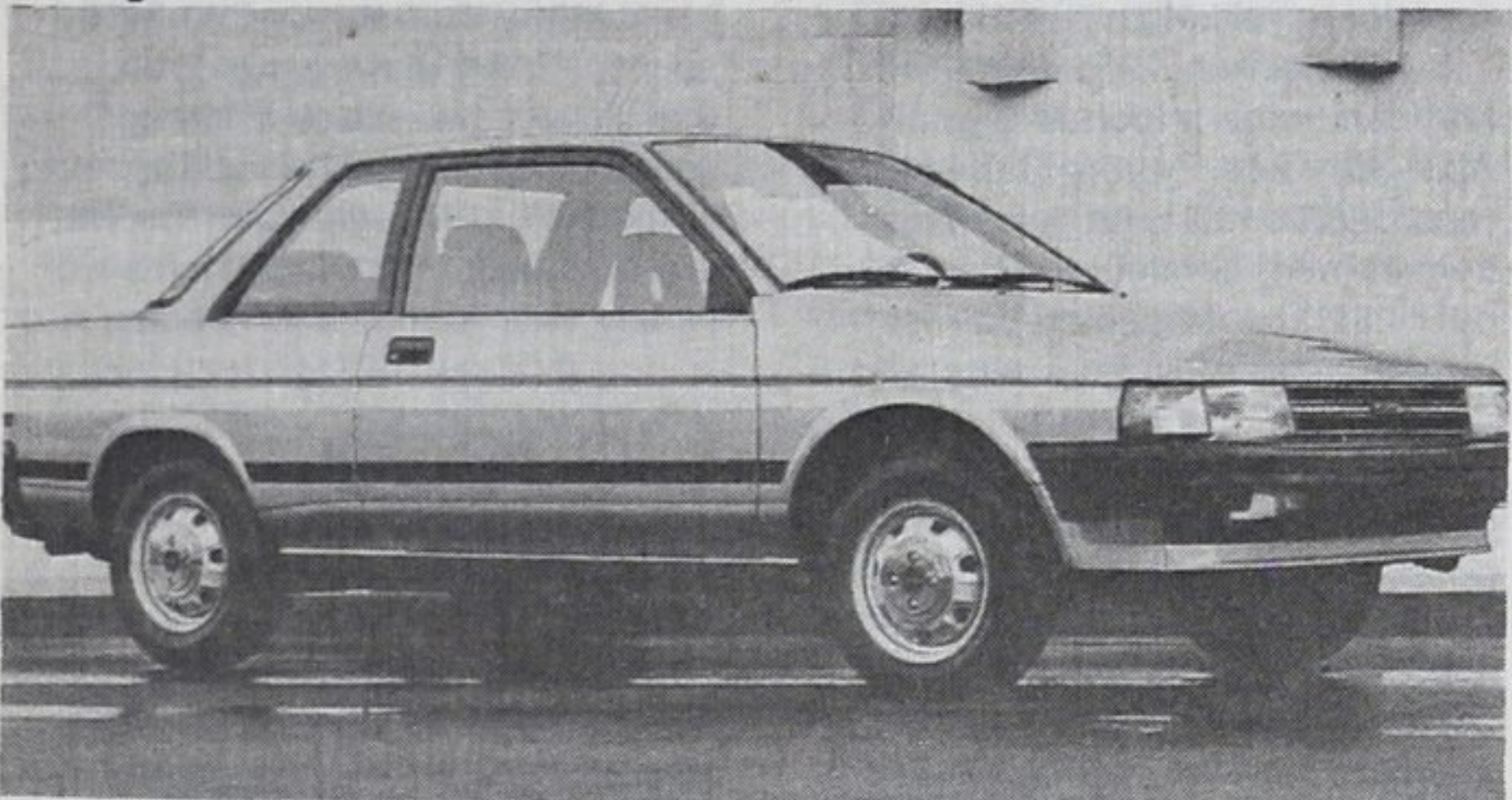


Toyota 3-door liftback



Toyota 2-door coupe

Show concern for pedestrians

It is the duty of all motorists, if not a moral obligation, to be concerned about the protection of pedestrians. Although the number of pedestrians accidentally killed in Canada every year has decreased to 875 in the early eighties from 1,200 in the early sixties, that figure is still too high. It is estimated that 13,500 pedestrians are injured every year.

Pedestrians are extremely vulnerable compared to drivers and their passengers. Only 20% of passengers involved in a two-car collision are physically injured, while every pedestrian in a collision is injured. One in every fifteen dies.

The risks of being the victim of an automobile accident is 7 1/2 times greater in the city than it is for those living in the countryside.

10% off ALL SHOCKS
FOR THE MONTH OF OCTOBER ONLY

Your Midas Shock Absorbers are Guaranteed for as long as you

FREE own your car
Inspection of Brakes
and
Exhaust System

TOP GUNS



Available only at the follow location:

Hwy. 93 at Yonge St.

MIDLAND

(705) 526-0545

1988 PONTIAC GRAND AM Silver, 4 cyl., f. Inj. 2 dr., auto, P/S, P/B, stereo, 8,000 miles	1988 CHEVY CELEBRITY EUROSPORT 8 pass. wagon, 2.8 multiport V6, air cond., stereo, O/D, roof rack, 9,000 miles	1988 GMC SAFARI VAN 6 cyl., auto., P/S, P/B, SLX model, fully equipped, 7 pass., A/C, cass., Med. Blue, 3,000 miles,	1988 DODGE ARIED K-CAR L.E. 4 cyl., Fin., auto, 4 dr., P/S, P/B, AM radio, Med. Blue, rally wheels, 9,000 miles	1987 CHEVY 1/2 TON PICKUP V6, F/Inj., auto., P/S, P/B, rally wheels, tinted windshield, cloth seat, choc. brown, 9,000 miles	1987 BUICK CENTURY LIMITED Silver/blue int., 4 cyl., 4 dr., air, stereo, P/W, 60/40 seat, wires, auto, P/S, P/B, 24,000 miles
1987 CHEVROLET CAPRICE CLASSIC BRGHM 305, V8, auto, O/Drive, 4 dr., fully equipped incl. wire wheels, air, etc. Navy blue inside & out, 25,000 miles.	1987 CHEVY CELEBRITY EUROSPORT 4 cyl., 4 dr., 2 tone black/gold, buc. & console, air, stereo, p/wind., 24,000 miles	1987 OLDS CUTLASS CALAIS 4 cyl., auto., P/S, P/B, buckets, console, air/cond., stereo, wires, 20,000 miles	1987 DODGE CARAVAN 4 cyl., 2.6L, auto., P/S, P/B, 5 pass., stereo, roof rack, 21,000 miles	1987 CHEVROLET S.S. MONTE CARLO Maroon colour, T-bar roof, well equipped, 305-V8, auto, P/S, P/B, 14,000 miles	1987 PONTIAC GRAND AM 4 cyl., F.inj., 2 dr., auto., P/S, P/B, tilt, stereo, air cond., silver, 25,000 mi. 1985 PONTIAC GRAND AM L.E. 2 dr., 4 cyl., P/S, P/B, stereo, 30,000 miles
1987 OLDSMOBILE DELTA 88 ROYALE BRGHM V6, F.Inj., auto, 4 dr., P/S, P/B, fully loaded, white ext., blue int., 26,000 miles	1987 VOLKSWAGON FOX G.L. 4 dr., 4 cyl., 5 spd., factory sunroof, navy blue, 15,000 miles	1986 TOYOTA CAMRY L.E. Auto., P/S, P/B, O/D, 4 door, 2 tone, fully loaded, 30,000 miles	1986 PONTIAC GRAND PRIX V6 auto, P/S, P/B, buckets, console, tilt, cruise, P/W, cass, R/wheels, 22,000 miles	1985 CHEVY CHEVETTE CS 4 dr., 4 cyl., auto., AM/FM stereo, 2 tone char. grey/silver 38,000 miles.	1987 FORD TEMPO 4 cyl., F.Inj., auto, 4 dr., gold on gold, air cond., stereo, 16,000 miles
1986 PONTIAC J-6000 4 cyl., F.I., auto, P/S, P/B, air cond., stereo, P/W, split seat, 33,000 miles, 2 to choose from	1987 FORD TEMPO 4 cyl., F. Inj., 4 dr., P/S, P/B, auto., rally wheels, Navy blue, 32,000 miles	1986 CHEVY CELEBRITY EUROSPORT 4 cyl., F.I., 4 dr., P/S, P/B, buckets & console, cruise, stereo cass., char. grey, 27,000 miles	1985 OLDSMOBILE CUTLASS BRGHM V-8 auto., P/S, P/B, fully equipped, 30,000 miles 2 to choose from	1985 PONTIAC PARISIENNE BRGHM V8, auto., P/S, P/B, air, stereo, power windows, split seat, wires, 32,000 miles	1984 PONTIAC FIREBIRD TRANS AM 305 V8, auto., P/S, P/B, O/D, T-bar roof, tilt, cruise, stereo cass., jet black, 44,000 miles
1986 FORD TEMPO GL F. Inj., 4 cyl., auto., P/S, P/B, 4 dr., A/C, Jet black, 31,000 miles	1985 CHEV CELEBRITY EUROSPORT V6, auto, O/D, P/S, P/B, Jet black, stereo, buckets, 4 dr., 15,000 miles	1985 PONTIAC 6000 LIMITED EDITION 4 cyl., auto, P/S, P/B, Fully loaded, 36,000 miles	1985 MAZDA 626 LX 4 cyl., 4 dr., 5 spd., factory power moon roof, stereo cass., silver, 47,000 miles	1985 DODGE ARIES WAGON SE 4 cyl., Fuel Inj., auto, P/S, P/B, 30,000 miles	1985 TOYOTA PICKUP 4 cyl., 5 sp., cap, longbox 1986 NISSAN KINGCAB 4X4, 5 sp., stereo, cap
1984 PONTIAC FIREBIRD TRANS AM V8, auto, O/D, new T/A tires, air, tilt, stereo, cruise, T-bar roof, med. brown, 36,000 miles	1984 OLDS DELTA '88 ROYALE BROUGHAM 305 V8, auto., P/S, P/B, O/D, fully loaded, navy blue, 39,000 miles	1985 BUICK REGAL LIMITED V6, auto, P/S, P/B, fully loaded, padded roof, wires 37,000 miles	1985 OLDS DELTA 88 ROYALE BRGHM V8, auto, P/S, P/B, fully loaded, power roof, 49,000 miles	1985 CHEVROLET CAVALIER TYPE 10 Candy apple red, 2 dr., notch back, auto., P/S, P/B, stereo, 35,000 miles	1985 GMC RALLY VAN 8 pass., air, stereo 1984 FORD BRONCO II V6, 4 sp., stereo/cass, 2-tone blue/white

Stan Nixon Motors LIMITED

Main St., Stayner, Ontario
Phone 428-3242 or 428-3243

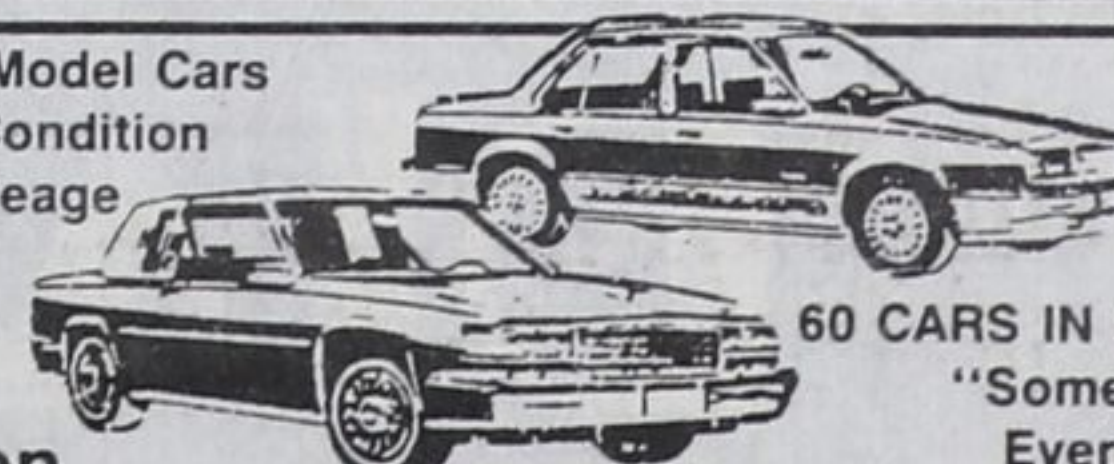
Stan Nixon
428-2120

After Hours Please Call:

Paul S. Nixon
429-4639

John Nixon
429-4702

Quality Late Model Cars
Excellent Condition
Low Mileage



60 CARS IN STOCK
"Something for Everyone"

Extended Warranty available