

Tay residents have list of complaints

High ground, low water pressure

Residents who live on high ground in the Sunnyside area of Tay Township have said they are having trouble with low water pressure. They turned out in force to a public hearing at the township offices Aug. 15 to object to an eight-house development at Sunnyside and Everton.

One resident complained that he couldn't take a shower when his hose was running. The fire hydrants on his street "spit out hot air in the summer," he said. He was concerned that fire insurance rates would go up in the area if insurance companies found out there was no water from the hydrants.

The problem appears not to be a shortage of water but rather insufficient water pressure. Reeve Bruce Tinney noted that a recent upgrading had improved the system. What is needed as well is an in-line booster pump.

The June 26 minutes of the planning advisory committee described such a pump as "a functional necessity" for this subdivi-

Trustees start at \$13,200

The men and women elected this Nov. 14 to the Simcoe County Board of Education will be paid \$13,200 a year.

This new figure will be \$1,200 more than the maximum figure a trustee could have received in the 12 months ending Nov. 30. It is a minimum 10 per cent increase.

On June 29, when the change was approved by the trustees, the maximum a trustee could be paid in a year was \$11,998.68. Each trustee is paid \$497.19 a month and an additional \$50.27 for each meeting attended, to a maximum of 10 meetings a month.

To receive \$11,998.68 by Nov. 30, a trustee would have to attend 10 meetings a month in each of the previous 12 months.

Starting on Dec. 1, a trustee will be paid for attending a meeting only if that meeting occurs outside of Simcoe County.

Starting Dec. 1 the trustee who chairs board meetings will be paid \$20,000 a year. The current salary is \$1,247.89 a month, or \$14,974.68 in 12 months.

The vice-chairperson will receive \$16,600. The current salary is \$621.76, plus \$50.27 a meeting. The maximum a vice-chairperson can make in the 12 months ending Nov. 30 is \$13,493.52.

The new salaries approved June 29 will rise further on Dec. 1 of 1989 and on Dec. 1 of 1990.

On Dec. 1, 1990, salaries will become \$14,553 for a trustee, \$18,302 for the vice-chairperson, and \$22,050 for the chairperson. The out of county meeting payment will become \$110 a day.

sion. However, the lot levies charged to the developer would apparently cover less than half the cost.

Another question that

came up was whether there was a bylaw limiting the number of trees that can be removed from a building lot in Tay. Tinney answered that there was no

such bylaw.

Councillor Lynn Morton, council representative on the parks and recreation committee, asked if parkland would be reserv-

ed in this instance or cash taken in lieu. The planning act requires that, for each subdivision, either five per cent of the land or cash equal to five per cent of the

value of the land be donated to the township. In this case it will be cash.

A resident protested that the area lacked a park. Tinney explained that five per

cent of such a small development would not provide sufficient land for a park. The money would go into the parks and recreation budget.

Labour-intensive, cost-effective!

from **\$8,495***



Jeep Comanche

Comanche is the hardest working pickup in its class on the strength of these features:

- **With its 121 horsepower** standard engine and optional 177 horsepower Power Tech Six engine, Comanche delivers more horse power than any other compact truck engine.
- **Comanche's 1,475-lb. payload** provides terrific carrying capability.
- **Generating 141 ft. lbs. torque**, Comanche

comes by its reputation as a workhorse honestly. • **2WD or optional 4WD**, a Jeep tradition that spans five decades.

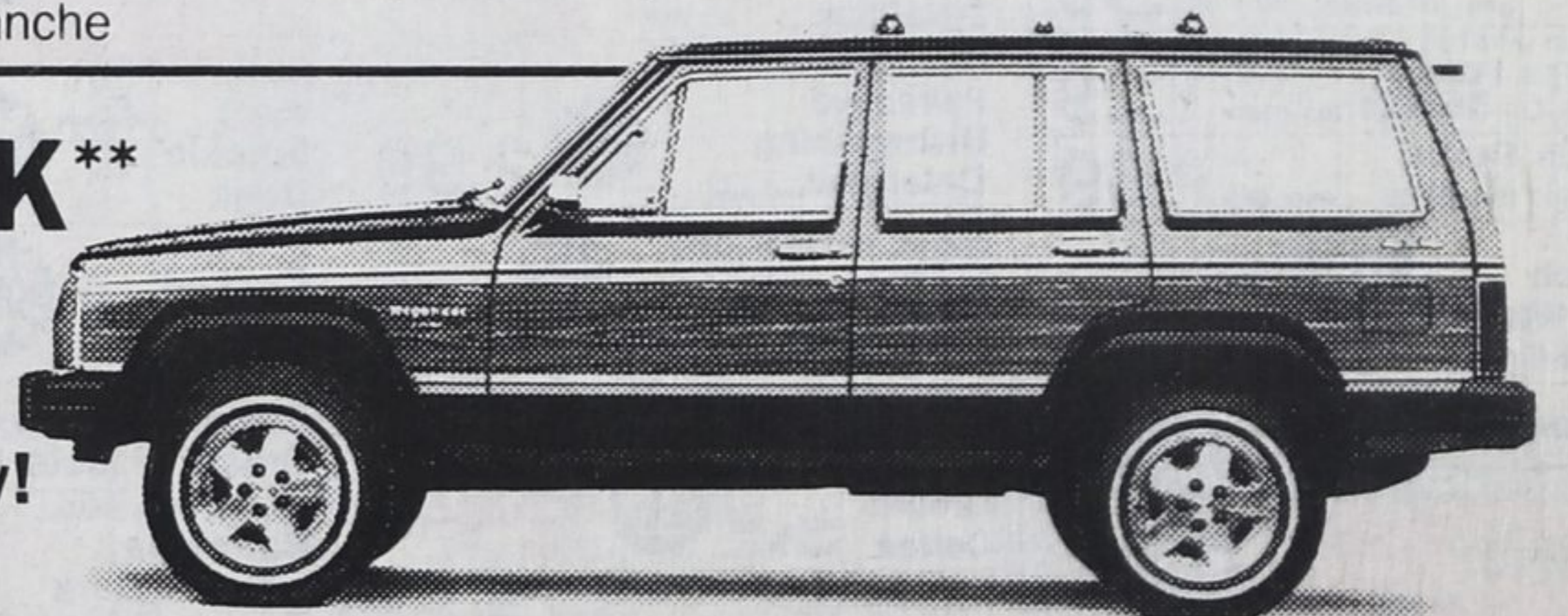
*M.S.R.P. base vehicle 2WD Sportruck after \$500 Cashback from Chrysler has been assigned to dealer. See your individual dealer for freight and PDI charges. Taxes and license extra. In-stock vehicles only. Dealer trade may be required. Dealer may sell for less. Limited time offer.

\$1000 CASHBACK** ON WAGONEER

DIRECT FROM CHRYSLER

Come in for a test drive today!

**See dealer for details. Cashbacks apply to all in-stock Wagoneer models. Dealer trade may be required.



Jeep/Eagle Dealers of Ontario

Penetang Motor Sales Limited
161 Main Street
Penetanguishene (705) 549-3121



Jeep



Expect the Best.