

# Bridge must be replaced: Tay

The 73-year-old Waubaushene Bridge on Duck Bay Road should be replaced, Tay Township councillors are telling the provincial government.

And they want the province to foot the bill - which rough estimates have put at \$1,000,000.

To add a touch of urgency to the situation, the council has requested a meeting with Minister of Transportation Ed Fulton.

"Obviously the bridge has seen better days," Reeve Bruce Tinney said at last Thursday morning's council meeting.

The one-lane, 66 meter structure was built in 1915. It spans the narrows separating Matchedash Bay from Georgian Bay.

A traffic count in May, 1987 found 1,400 vehicles - 30 per cent of them trucks and 2.5 per cent of them buses - use the bridge daily.

But a major construction project beginning this summer on nearby Highway 69, the reeve said, will greatly increase activity on the aging bridge. (Two lanes will be added and major structural work will be done to Highway 69 to eliminate the aggravating bottle neck of traffic caus-

ed by cottagers returning south on Sundays.)

A report prepared by consulting engineers Reid and Associates Ltd. of Barrie described the Waubaushene Bridge as "deficient."

"The proposed work by the ministry makes it necessary that the bridge be replaced in much the same time frame as the changes in Highway 69 take place," the report declares.

And, it states, the government should pay the bill because it's the government's project that makes the move necessary:

"Because of the ministry's past and current involvement in the structures crossing the Matchedash Narrows, and the fact that it is the ministry's program that largely determines the need for and the timing of the replacement of the bridge, the council of the Township of Tay believes there is merit in the ministry undertaking the replacement of the Waubaushene Bridge."

Currently, township fire department and public works department vehicles never use the structure because they are con-

sidered too heavy to do so safely.

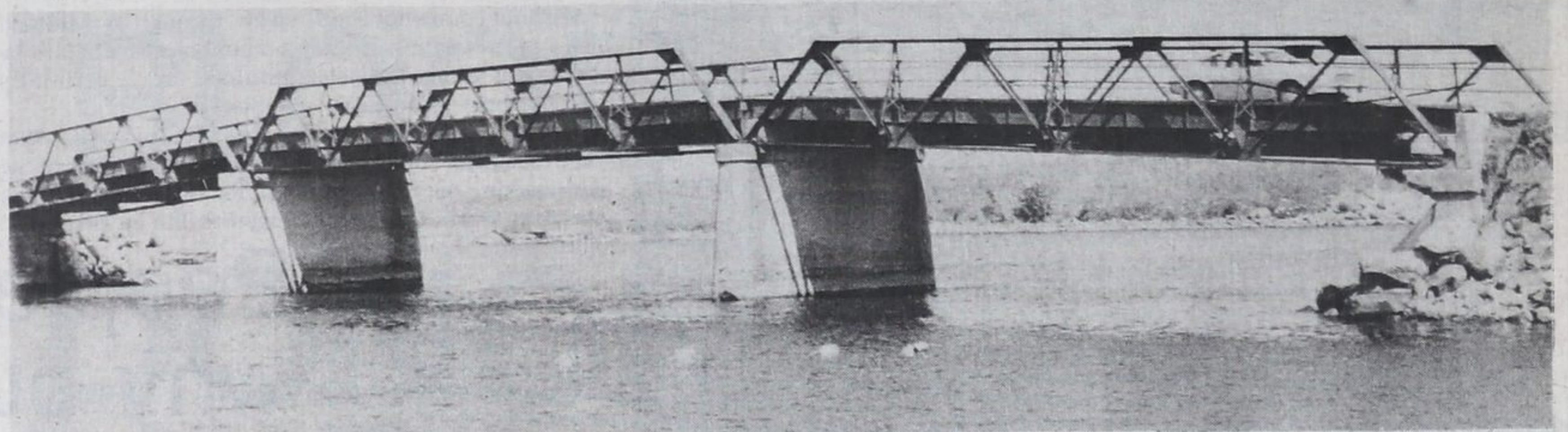
Highway 69 is destined

to become what is called a "controlled access highway," or a freeway

similar to Highways 400 and 401. When that project is done, the old bridge will

become much busier, the Reid report predicts. "It is unavoidable that

the present utilization of the bridge will be permanently altered."



Waubaushene Bridge

The aging structure must be replaced, say Tay councillors. It was built 1915. A new project on nearby Highway 69 will cause the bridge

to become much busier. It may not be able to stand the load, some say.

**RENTALS**  
**INFANT**  
**CAR SEATS**  
6 mos. only  
**\$20<sup>00</sup>**

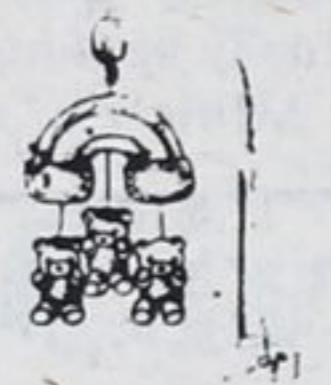


We also rent playpens, high chairs, etc.

**Baby Plus**  
Furniture from Tots to Teens

**STROLLER**  
**REPAIRS**  
**GUARD RAILS**  
**1/2 PRICE \$9<sup>99</sup>**

**MUSICAL**  
**MOBILES**



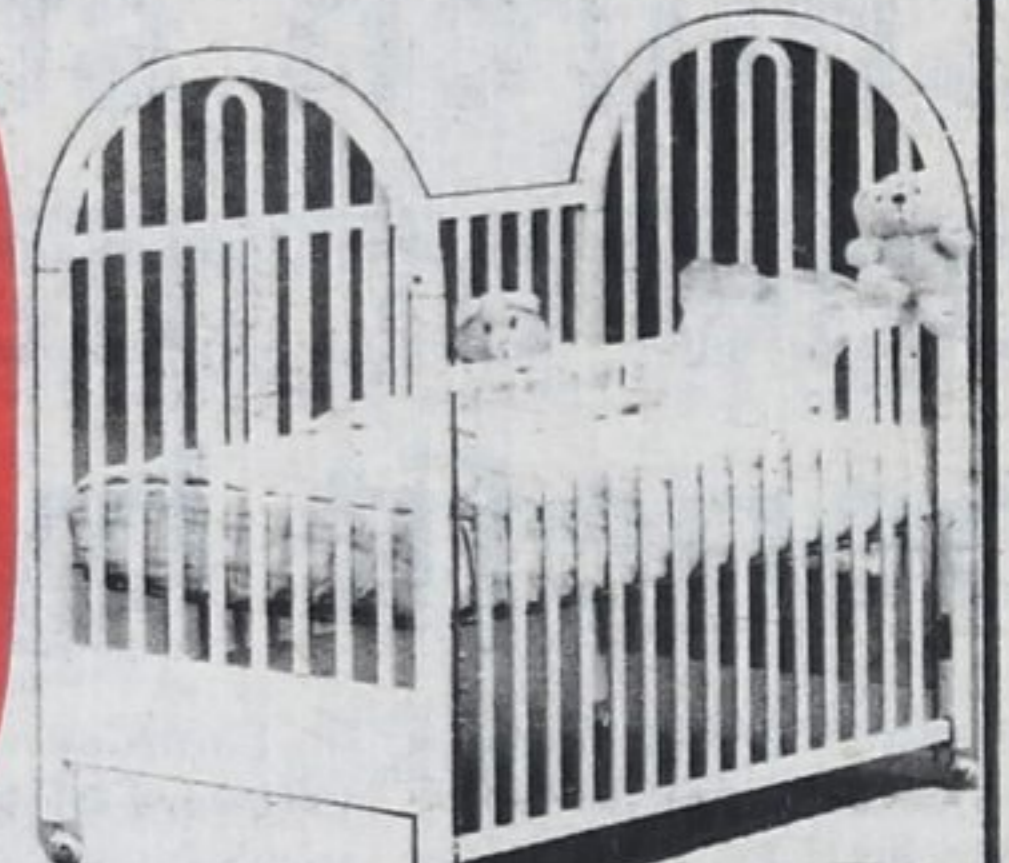
**\$19<sup>95</sup>**  
Reg. \$34.95

**7 pc. MARINA SET**

(Natural and White Only)  
Marina Crib (Irregulars).....\$219<sup>95</sup>  
\* Change Table.....\$99<sup>95</sup>  
\* Pad.....\$13<sup>95</sup>  
\* Firm Mattress.....\$49<sup>95</sup>  
\* Set consisting of:  
Bumper Pad  
Sheet and Comforter....\$79<sup>95</sup>  
Total Price.....\$463<sup>75</sup>

**SAVE \$64<sup>75</sup>**

**\$399**



## CUSTOM ROUND BALING

Baler fitted with the new plastic net wrap system. Keep the goodness in your hay and the rain out.

We Do Custom Hay Swathing

**Stuart W. Thomas**

(705) 322-3218

We welcome enquiries throughout Huronia.

JILL NORTHEY, B. Music, B. ED.,

A.R.C.T. (Voice and Piano)

is now accepting students for the fall in

PIANO, VOICE and THEORY

Elmvale, Barrie

322-1373

**FATHER'S DAY SPECIAL**  
on ALL FRUIT TREES

**\$15<sup>00</sup> or 2 for \$29<sup>00</sup>**

20% Off SHADE TREES And EVERGREENS

**ATTENTION: ALL GARDENERS**

- Mixed Pans or Planters from **\$12.99**
- Asparagus and Hot House Tomatoes
- Hanging Baskets from **\$11.95**

**SPECIALS OF THE WEEK**

<b>PANSIES</b> (all colours) <b>75¢</b> Box	<b>MOTHER GERANIUMS</b> 2 For <b>\$15<sup>95</sup></b>	<b>CELOSIA and AGERATUM</b> Boxed plants <b>75¢</b> Box \$9 per flat
---	--	---

Potted Roses, Pansies, Perennials, Shrubs  
ALL YOUR GARDENING NEEDS

Cedar Furniture, now in white as well as natural

Senior Citizens - 10% Discount Monday, Tuesday throughout year

**Holt's Greenhouses and Garden Centre**  
Hwy. #27, 4 miles south of Elmvale  
**322-2389**

**Go Ahead Spoil Your Children**

**BUNKS**

\* 12 Different Colours  
\* 18 Gauge Steel (Mattress & Shelves Extra)  
Spaceworks

**CRIB**



**FREE MATTRESS**  
Reg. Value \$34.95

**\$188<sup>95</sup>**



**TWIN SIZE BED**  
Reg. \$259.95

**\$199<sup>95</sup>**

**little tikes**

toys that last.

**ON SALE NOW!**

**Dropside™ Wagon**  
**\$69<sup>95</sup>**



**Cozy Coupe Car**

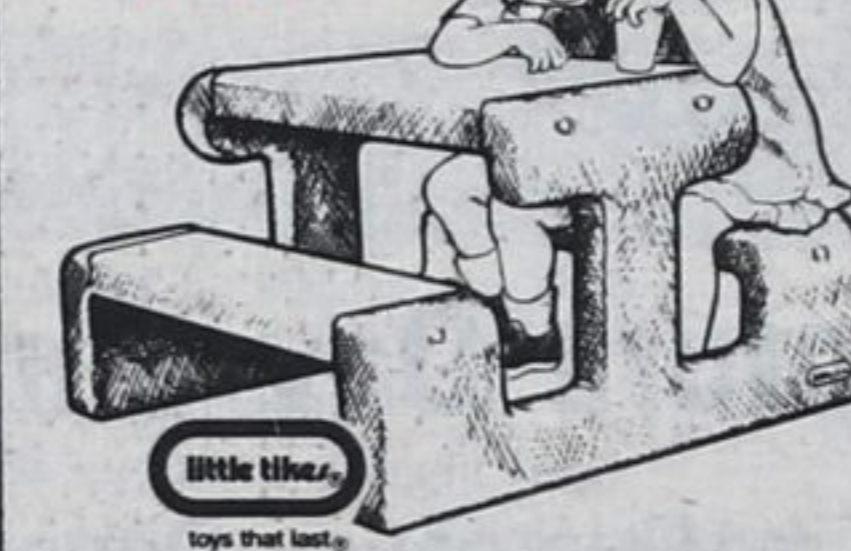


**\$69<sup>95</sup>**

**Turtle Sand Box**  
**\$49<sup>95</sup>**



**Picnic Table**  
**\$49<sup>95</sup>**



**\$299<sup>95</sup>**

- Full Boot
- Rainshield
- Reversible Handle
- Large Wheels
- Corduroy Material

Reg. \$139.95  
**\$99<sup>95</sup>**



**BABY SHADES**

Shades baby from sun, heat & glare in the car

**\$12<sup>95</sup>**



**SNUGLI ONLY**

**39<sup>95</sup>**



Reg. \$44.95  
Baby Carrier can be used from Birth to 2 years

**Gerry Carrier**  
All Purpose baby back carrier & stand  
**\$49<sup>95</sup>**



**BATH TUB**  
Less than 1/2 Price  
**\$5<sup>95</sup>**



**Gendron Twin Stroller**  
Reg. \$199.95  
**\$179<sup>95</sup>**



**UMBROLLER STROLLER**  
**\$199<sup>95</sup>**



**SAFE-T-RIDER**  
FREE SEAT SAVER WITH PURCHASE OF TODDLER CAR SEAT FROM  
**\$59<sup>95</sup>**



**BABY PLUS**  
370 DUNLOP ST. W., BUILDING 1, BARRIE  
737-4663

**Baby Plus**  
Furniture from Tots to Teens

**OPEN**  
9 A.M. - 9 P.M.  
MONDAY TO FRIDAY  
9-6 SATURDAY