

# Visiting St. Margaret's a year after

Building of the new St. Margaret's Church in Midland, on the foundation of the church which was gutted by fire on Dec. 24, 1986, is advanced to the stage such that, a year later, progress can be seen day by day.

The church will be ready for use by the congregation in another couple of months.

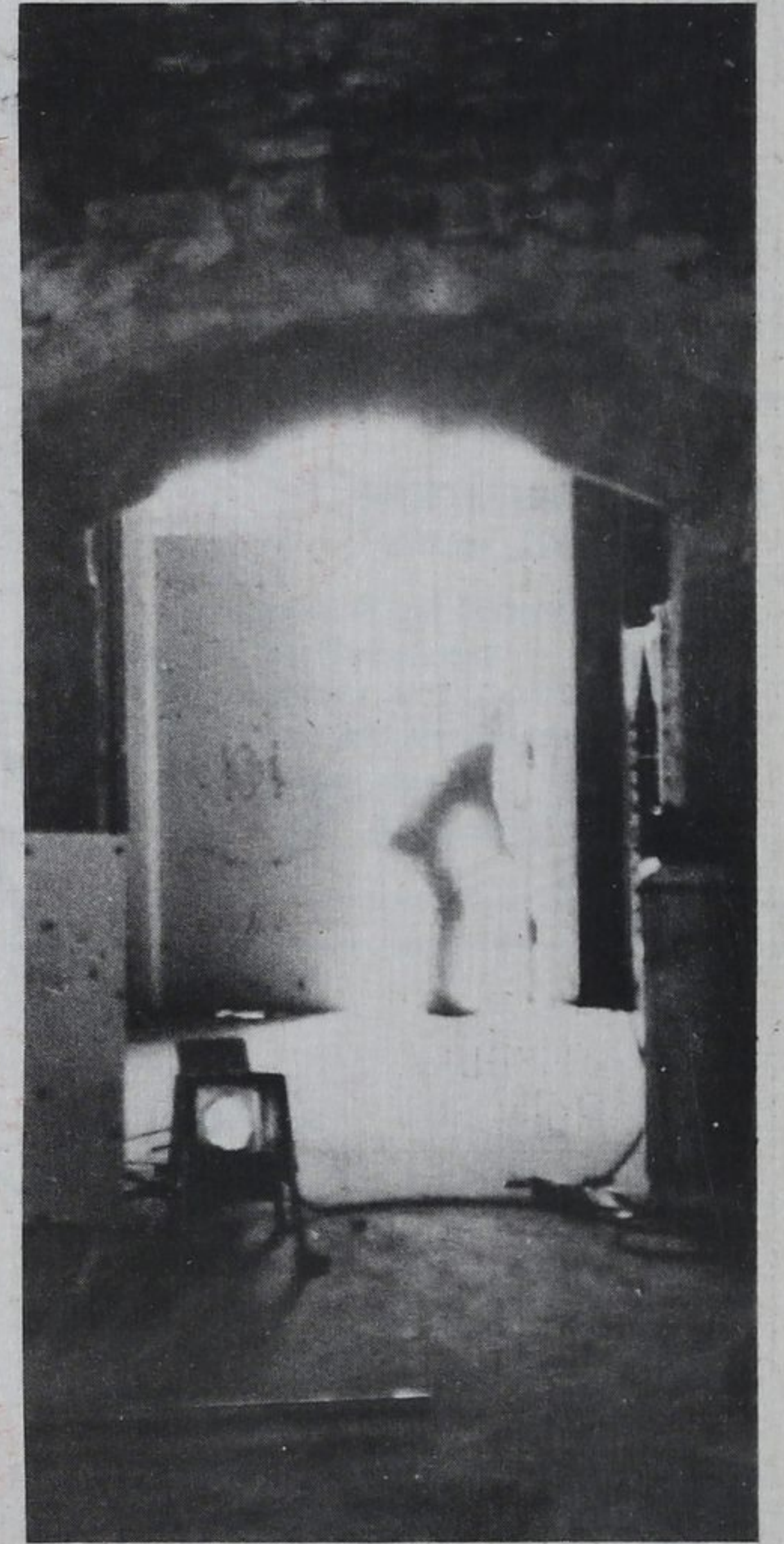
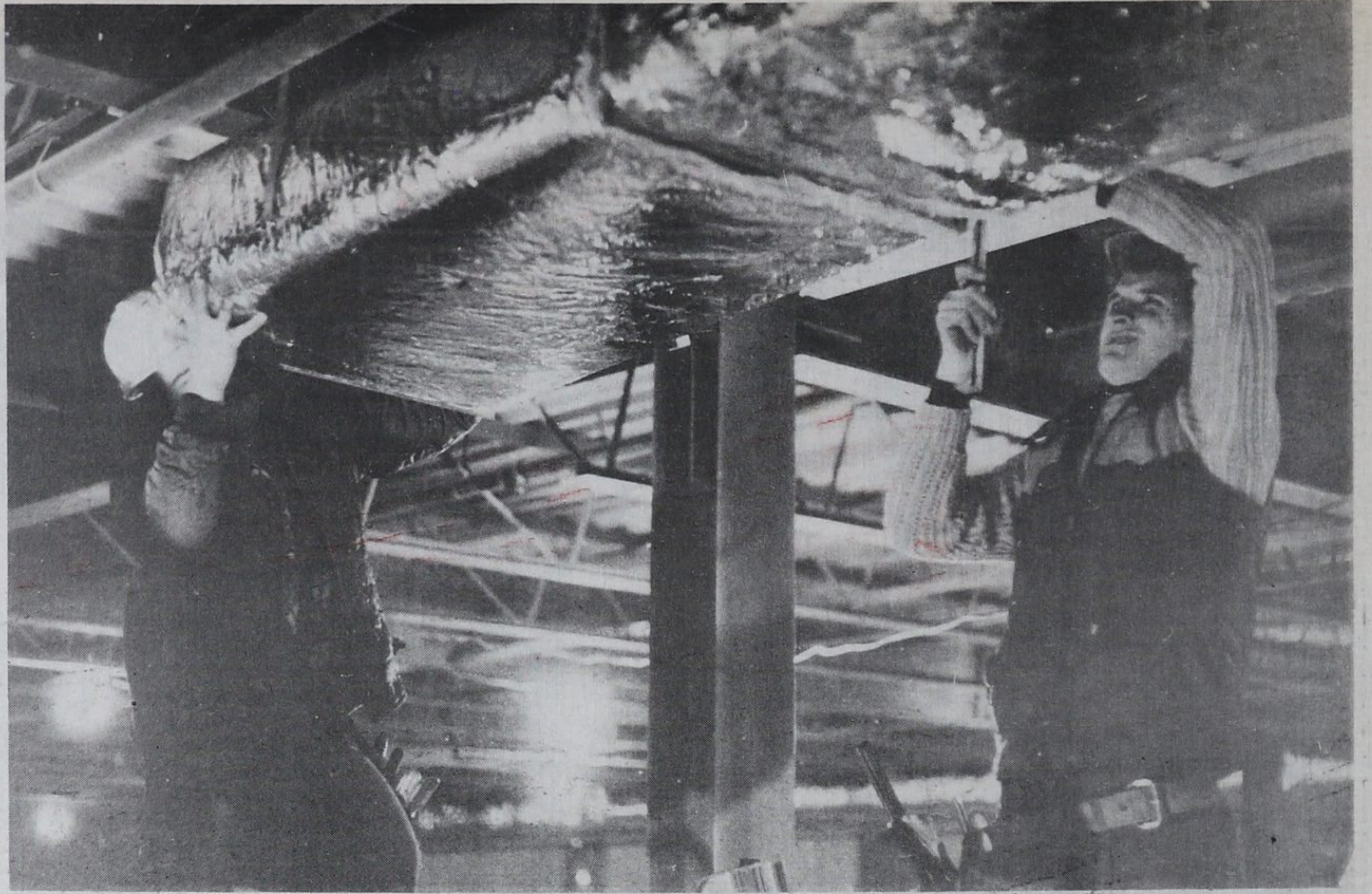
The new church will be less expensive to heat. Six high efficiency gas furnaces in the basement can warm the church quickly. Only two of the furnaces will be burning when the church is not in use. The new side walls, and roof, of the building, are insulated to modern standards. The new windows are of thermo-pane glass. The leaded stained glass windows will be on the inside.

During a recent visit to

the church, employees of Weaver's Sheet Metal were putting up ductwork in the church hall (top photograph).

Plans for the new church include a steeple. Other workers were moisture proofing the interior of the new windows, and removing the front doors (middle photos).

Contractor Bryan How stands beside one of the church's front doors, which has been stripped preparatory to it receiving a new, open air finish. The old solid doors are being fitted for windows. How, and others with a role in building the church, examine a template for a recess in the front wall for a statue (bottom photos). In the old church the statues stood on ledges projecting from the wall.



**Photos by Murray Moore**

