

Classified Market

Midland Times
526-2283

Penetanguishene Citizen
549-2012

Elmvalle Lance
322-1871

Wasaga Times
429-5300

AUCTION SALES

AUCTION SALES

AUCTION SALES

AUCTION SALES

AUCTION SALES

AUCTION SALES

AUCTION SALES

AUCTION

Farm Auction Sat. March 21st, at 10:30 a.m. for Lawrence Bell, Lot 22, Con 3, Oro Twp., (County Rd. #57), 5 miles north of Barrie, off Hwy. #11, or 15 miles south of Orillia. All high quality farm machinery, all well maintained inc: 3 tractors, cultivation, haying and harvester equipment inc: Deutz D x 130 tractor, cab, fully equipped and only 1330 hours (like new). 4WD, set of 18 4 38 duals, White #700 4 WD utility tractor and 160 H.D. loader w/ QA bucket only 2100 hours, White #285 tractor, cab, #140 loader (exc. condition) Int #720 5 x 18 auto-reset plow (like new), Int #45 30 ft. cultivator w/ mulchers, White #252 40 blade wheel disk, 16 ft. chain harrows, JRB 350 gal. field sprayer, Cyclo 6 row 30" corn planter, 3 PTH fertilizer spreader, Vermeer 504H big round baler w/ hydraulic tension, Hesston 12 ft. 1014 hydro swing hay bine, Deutz - Fahr KS85 rotary rake, Big round bale wagon, NH #782 2 row corn harvester w/ hay pick-up, NH pipe bale elevator, Farmhand #835 mix mill, Int #595 370 bu manure spreader, 51 ft. Brandt 8" auger, NA 7 ft. single auger snow blower, 1973 Ford 700 w/ big auger 12 feed mixer and unloader, #700 Jiffy Hy dump, Calsa high pressure sprayer, moisture tester, plus several small farm related items, inc big bales of hay, straw, farm gates, etc. **Terms:** Cash, Farm Sold, Lunch. **Remarks:** All machinery has had good care and maintenance and is field ready.

Auctioneer: Pifher Auction Service Ltd.
(705) 726-4841/(705) 445-4848

18, 19, 20, 21, 22, 23

Real Estate Sale by Public Auction

Saturday, April 18, 1987
Time: 1:30 p.m.

Property of the Late Caroline Wilcox. The land is located in the Township of Tay, County of Simcoe; and is composed of the west half of Lot 98, Concession 1, Township of Tay.

The property contains 70 acres more or less; a 4 bedroom white stucco house, heated by wood; a barn; and a drilled well.

The land of 70 acres more or less consists of: 40 acres medium loam, workable; 15 acres of hardwood bush; 10 acres second growth; 5 acres right of way to Wye Lake.

Location: on the Old Penetang Road, approximately 1/2 miles south of Midland. Take Hwy. 93 to Hwy. 12 east for approximately 1/4 mile, turn south and continue 1 mile to white stucco house. Follow signs.

There will be a reserve bid on the estate.

Terms: \$5,000.00 to be paid the day of the sale, cash or certified cheque; balance to be paid within 30 days.

Neither auctioneer nor the estate of the Late Caroline Wilcox will be responsible for damage or injury on the day of the sale.

For more information call: David Wilcox (705) 322-2480; Wm. Wilcox (416) 247-7928.

RAY D. WILCOX
AUCTIONEER, SCL NO. 49



ARCHER COLWILL

"SELLING SUCCESSFUL SALES EVERYWHERE"
SINCE 1957

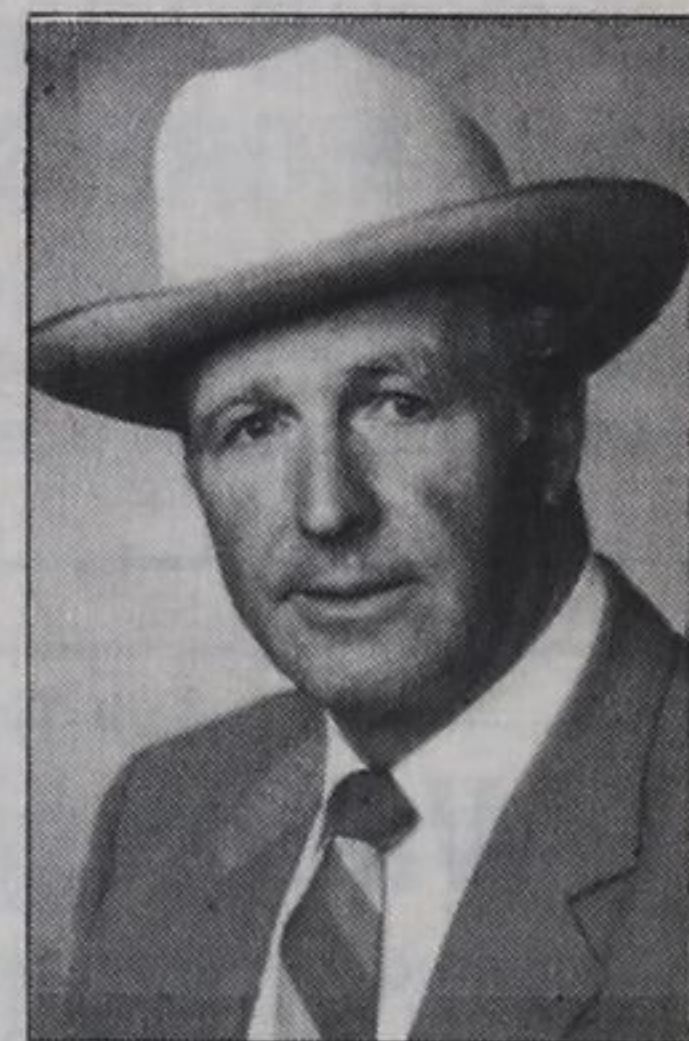
AUCTIONEER - APPRAISER

INSURANCE &
ESTATE APPRAISALS

- FURNITURE • FARM SALES
- ESTATES • REAL ESTATE
- ANTIQUES • LIQUIDATORS

726-8904

"You profit with our experience"



FOR RENT

Large farmhouse 2 miles west of Midland. 5 bedrooms, large kitchen with wood stove, oil/wood furnace, \$425 month, first and last required. Reply with particulars Box 609-N, c/o Midland Times, Midland L4R 4L3.

20 to 23

Immaculate one bedroom ground floor apartment, Main St., Penetanguishene. Private entrance, stove and fridge, \$415 plus utilities. Available April 1. 526-4783.

20 TF

2 bedroom apartment - \$425 month plus utilities. 2 blocks from Main Street. Call 549-8964 after 4:30 p.m.

20, 21, 22

2 bedroom apartment - \$450 month includes utilities, fridge, stove. First and last month's rent required. 1 child only. No pets. Across the Bay - Penetang. 549-7217.

20, 21, 22

1 bedroom apartment, \$275 month. Inquire 526-5390.

20

Bachelor apartment available immediately. First and last month's rent required. 526-8496 days or evenings.

20, 21, 22

Elmvalle - 1 bedroom apartment available April 1, 1987, all utilities included, references preferred. Contact Elsie 322-1260 or 322-1643 evenings.

20 TFN

Balm Beach, lakefront studio cabin all conveniences, available March through June, evenings, 361-1617.

20 TFN

Balm Beach, 2 bedroom winterized cottage available April to late June, phone evenings, 361-1617.

20 TFN

Two bedroom luxury house, \$485 per month plus utilities. Bachelor apartment, \$275 plus utilities. 429-3971. Approximately seven miles from Elmvalle.

14 TFN

Store, 1,000 square feet, downtown Penetanguishene. \$600 per month. 526-4783 evenings.

36 TF

Balm Beach 2-3-4 bedroom furnished cottages from \$375 monthly, includes utilities. First and last month's rent. 324 Tiny Beaches Rd., S. 361-1656, 361-1526. 416-669-2803.

4 TF

AUCTION

Farm Auction Wed., April 1st at 11 a.m. for Doug and Nancy Hickling, Lot 1, Con. 5, Vespra Twp., 6 miles north of Barrie on Hwy #27, then 1st farm west on Simcoe County Rd #22. All high class, well maintained farm machinery inc: 3 Tractors - Int 966, Int Turbo 1066 (both tractors with cabs and coolant filters), Cockshut 1350 w #1610 HD loader; set of 18-4-38 snap-on duals, Int 5-18" #710 auto reset SM plow, Int #510 - 18 run seed and fertilizer drill, Will-rich 22 1/2 ft cultivator w hyd wings, spray incorp kit and 4 bar harrows (almost new), Brillion 18' - 3 sect land packer, spray motor 150 gal 3 PTH 32' field sprayer, Int #595 manure spreader w hyd gate, NH #676 manure spreader, harrows, Hay, Corn, and Silage equipment: Int #400 4 row cyclo corn planter, Fox 3000 2 row forage harvester w pickup, Dion and NH 54" forage blowers, 3 - 10 ton Dion forage wagons, Int #375 hydrostatic 12 ft swather, auger, header and crimper, NH #269 baler, Little Giant 42' bale and grain elevator and gas motor, GT 54' - 8" hyd grain auger, Dryer: Tox-o-wik 500 bu grain dryer; Int #80 dual auger snowblower, 3 - 250 bu grain bins on 10 ton wagons, 12 ft hyd fertilizer auger, 3/4 HP air compressor, 500 PSI power washer, 250 lb anvil, 1 HP drill press, 8 HP 34" White riding lawn mower, 5 HP rototiller, Sentinel yard light, pressure and hot water tanks, 2 - HD farm wagons w racks, chains, shovels, forks, small farm related tools, etc. **Truck:** 1977 Dodge 1/2 ton SE and cap, low mileage, certified (like new). **Terms:** Cash, Farm is sold. Lunch by Midhurst United Church Women.

Auctioneer:

Pifher Auction Service Ltd.
(705) 445-4848/(705) 726-4841

Remarks: Tractors and all machinery have been well maintained, and are in excellent condition.

20, 21, 22, 23, 24, 25

SERVICES

SERVICES

R & M Carpet & Upholstery Cleaning

Living room, dining room, hall - \$59.95
Chesterfield and chair - \$59.95
Professional Steam Cleaned with industrial steam unit
MARCH SPECIAL "FREE" cleaning of one chair.
Free Estimates
Call 429-3671

18, 20

SERVICES

SERVICES

SPOT CASH PAID

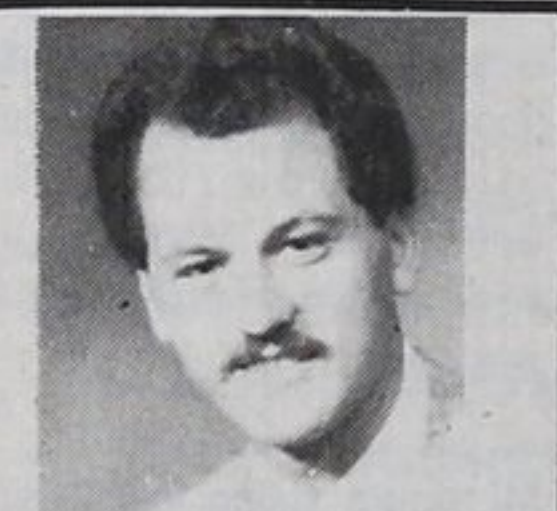


For unwanted articles, antique furniture, glass, silver, gold, costume jewellery, old wicker, tobacco memorabilia, wanted - old books, records and tapes. Buy - Sell - or Trade
Call
The Crow's Nest
236 King Street
526-6131

16 TTFN

Personal Income Tax prepared. Ten years experience. \$15.00 single, \$25.00 couple. Also, professionally prepared resumes, reasonable rates. Phone 526-2326.

19 to 23



Raymond Matt
526-3868

526-7204 (home)
RRSP, Annuities, GIC's
Investment Funds
Life, Group, Disability



16, 20, 24, 28 TTFN

FOR RENT

Coldwater - Storage space 3,000 square feet. Can be used for retail outlets or storage. Call 534-3148.

15 to 22

One bachelor apartment for rent. \$250 month, heat and hydro included. 549-7458.

16 TFN

Brand new two bedroom on Bay near Fourth, never lived in. New roof, wiring, windows, kitchen cupboards, broadloom throughout. Second floor duplex, private entrance, ideal for young couple or working single parent. \$495 plus utilities. 526-4783.

15 TF

Available immediately in downtown Penetanguishene, furnished bedroom. Includes cable and light cooking facilities. For more information call 549-7634. Leave message.

TFN

Retail store space available, approx. 760 sq. ft. located at 3081 Mosley St., Wasaga Beach. For information call 322-2936, Monday to Saturday, 8 - 4:30 p.m.

95 TFN

"BEE N CEE" BOOKKEEPING INCOME TAX SERVICE...AT REASONABLE RATES

Single...\$15⁰⁰ Couple...\$25⁰⁰ Seniors...\$10⁰⁰
Additional Family Member...\$10⁰⁰ (son, daughter)

We also prepare tax returns for small business and rental properties
Please call for an appointment

526-7628 or 526-3814

18, 20, 22, 24, 26

As a Service to Our Community:

Recorded announcements of current funerals in progress at:

James H. Lynn
Funeral Homes
Midland and Elmvalle

Are available 24 hours a day by calling:

526-4019

If you require further information please call our business numbers...

Midland 526-6551
Elmvalle 322-2732

We have brochures pertaining to all aspects of Funeral Services and will mail these out at no obligation upon request.

2 TF

GERVAN & ASSOCIATES

Insurance Brokers Ltd.

512 Hugel Ave.,
Midland, Ont.
Mon - Fri.
8:30 - 5:30
Sat. 9:00 - 3:00



RATING EXAMPLE

1985 Chevrolet
Celebrity

Driving less than
5 kms to work
and
Safe Driving Discount

\$407⁰⁰ for 12 months

COVERAGES

\$1,000,000 P.L. & P.D.
Accident Benefits
\$250 Ded. Collision
\$50 Ded. Comprehensive
SEF 44 Endorsement
(Underinsured Motorist)

512 Hugel Ave., Midland

526-9345

10, 12 TTFN

FOR RENT

One 2 bedroom house, \$550 month plus utilities. One 1 bedroom apartment, \$395 month, utilities included. 526-3815.

17 TFN

Two bedroom main level house. Newly renovated, in quiet area, \$450 includes utilities. No pets. Available April 1. Peek-a-Boo Trail. 533-2465.

18, 19, 20

FOR RENT

Overlooking Georgian Bay, concession 15. Available June 15th. Call John or Janet 549-7364 (evenings only).

19, 20, 21

Balm Beach arena, luxury home. 3 bedrooms, 2 bathrooms, custom kitchen, family room, 2-car garage, 3 walk-outs, playground. 10 minutes to Midland. Complete references required. Ridout Real Estate 361-1811.

19, 20, 21

WANTED TO RENT

Family of 4 looking for 2 or 3 bedroom house, or farmhouse, within 15 miles radius of Elmvalle, occupancy immediately. I am a gardener and can do brick laying. Contact Barry at Brown's Valu-Mart, 322-1260.

20