

Croatian altar being built

One of the biggest pilgrimages to the Martyrs' Shrine of the year took place last Sunday. A large number of Croatians attended the dedication of a Croatian altar on the grounds.

The Croatians thus join other national groups, the Slovaks, Poles, Lithuanians, and Slovenians, who each have their own altar.

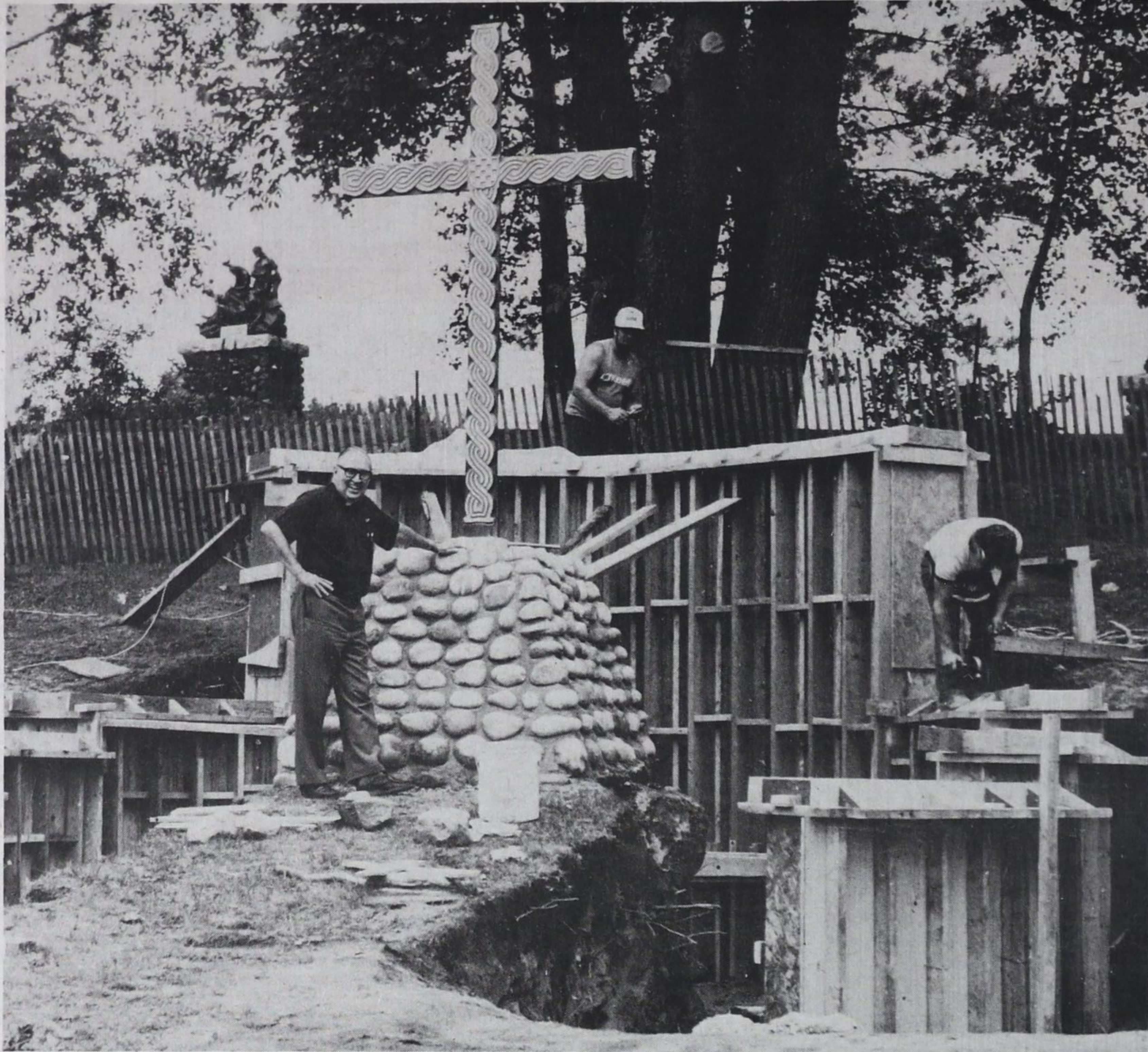
Cardinal Jaime Sin of the Philippines will dedicate an altar on Aug. 16. And in the fall a Portuguese altar will be dedicated.

Sale winners

List of winners, Manson J. Bradley Chapter No. 240, Order of the Eastern Star, Midland, Ten Penny Sale.

No. 1, Ticket 1026, Allan Martin (Jr.), Barrie; No. 2, Ticket 2483, John Sallows, Midland; No. 3, Ticket 3214, Joyce Bates, Waubaushene; No. 4, Ticket 1853, Mrs. L. Ball, Etobicoke; No. 5, Ticket 1470, Lillian Whiteman, Midland.

No. 6, Ticket 2127, Robert Ashhewe, Midland; No. 7, Ticket 3271, Eunice Munroe, Midland; No. 8, Ticket 2701, Una Tremblay, Midland; No. 9, ticket 3428, Cheryl Dwinell, Port McNicoll; No. 10, Ticket 1452, Reta Ritchie, Dundalk.



Croatian altar

Assistant director of the Martyrs' Shrine Father Emmett McKenna and two workmen were the only people at the Croatian altar on

the shrine grounds last Friday afternoon. On Sunday, thousands of Croatians converged

on the shrine, and their altar, during their annual pilgrimage.

Assistance program protects Port from water

Port McNicoll residents now have the opportunity to guard themselves against the effects of mother nature, thanks to a new program by the Ministry of Municipal Affairs.

The Shoreline Assistance Protection Program, a program designed to protect waterfront residents from the effects of water, has allotted the Port \$100,000 in loans. The loans will be used by residents who feel they need to guard themselves against the damages caused by the water. They can receive as

much as 75 percent of the total cost of the project in a loan set at 8 percent interest over as many as ten years. Residents can receive as much as \$20,000 each in loans for the protection of their property, said Port McNicoll treasurer clerk Ted Walker.

Walker said that so far only two applications have been sought after, one coming from a local resident and the other from Port Marina.

The Village received approval for the money through the Shoreline Assistance Protection Program last Monday and are

now in a position to start dispersing the loans.

All applications must be reviewed by the Municipality, said Walker, to ensure that there is indeed a need for the loan. According to Walker, the Village had plans to take advantage of the allotment by applying for a sum of money to be used in protecting the area pump house from water damage.

Under review, however, the Ministry of Municipal Affairs found that there was no real need for the protection and denied the loan.

Walker said that if the need arises and more people apply for loans than the Village was allotted, they will re-apply. He went on

to say that the Village will have little trouble receiving more money.

Interested persons in the program must apply to the

Municipal Office in the Port and will have to undergo a review by Village officials before any money is loaned out.



MOVING SALE

All spring & summer stock

1/2 price or less

Leah's Boutique

317 King St., MIDLAND
526-5304

Beat the August Price Increase

and save up to **40%**

on our entire collection of *Noritake* Sheer Ivory Bone China



Noritake - the Standard of Perfection
With Noritake imperfection is never acceptable!

THE PLACE SETTING



711 Yonge St. W., Midland 526-8523
Now open Monday to Saturday

"We feature a full Bridal Registry"

JORY'S
Specials
of the week
Mon. - Sat.
July 21 - 26

Planter's
Dry Roasted Peanuts
Reg. \$3.15
325 g
Special
\$1.99

Humpty Dumpty
Chips
Reg. \$1.69
200 g
Special
99c

Bonker's
Chewy Candy
Reg. \$2.26
200 g
Special
\$1.59

Poppy Cock
Reg. \$5.20
275 g
Special
\$3.59

Lowney Snack
O'Henry
Glossetts
Bridge Mixture
Peanut Clusters
Reg. \$2.35
175 g
Special
\$1.59

Planters Peanuts
Reg. \$4.36
750 g bag
Special
\$2.99

Your one stop for shopping
QUALITY, SERVICE & DEDICATION



JORY'S I.D.A. PHARMACY
526-2781
264 King St.,
Midland