

# Classified Market

Midland Times  
526-2283

Penetanguishene Citizen  
549-2012

Elmvale Lance  
322-1871

Wasaga Times  
429-5300

FOR SALE

FOR SALE

FOR SALE

FOR SALE

FOR SALE

FOR SALE

FOR SALE

## Gold Key Leasing



New 1987 Plymouth Expo  
**\$146<sup>41</sup>** month plus freight

1986 Plymouth Reliant  
**\$187<sup>15</sup>** month plus freight

Gold Key Leasing  
available at  
Huron Motors

**7.5% - 10.5%** financing on selected models

*Fifth Avenue* **9.9%** financing

Basic **HORIZON** from **\$6997** + freight + PDI

**HURONIA MOTORS LTD.**

35 Robert St. W. Penetanguishene  
Call Don or Ken

549-7783

549-2397



Strawberries - pick your own, every day at Pauze's Fruit Stand, County Rd. 6, Perkinsfield. Bring your own containers 60¢, without 65¢.

47 to 53

Strawberries - U-Pick, we pick, at Roblee Farms, Mertz Corner Road, 2 1/2 miles south of Wyebridge. Follow signs. Opening June 13. Phone 526-7077.

46 to 53

Strawberries - at Biggar's. Phone in orders or picked, or pick your own. Parking at patch. Call 322-1529.

47TF

Sailboards, water skis, canoes, kayaks & paddle boats. Call now for the best prices in Ontario. Monovans, Barrie, 737-3123.

44 to 51

469 New Holland hay bine, good condition, 9 ft. cut also a 12 ft. cut case pull-type cultivator, very good condition. 533-2427.

47,48

Strawberries - Pick-Your-Own. Herb Ritchie. 322-2413, across from Elmvalle Sales Barn.

46,48,50

Boker's pick-your-own organically grown strawberries, located on Hwy. 27, between Elmvalle and Waverley. Phone 322-1189.

48

### JERRY'S RADIO & TV OF BARRIE LTD.

Reconditioned 20" Colour TV's

FROM **\$199**

342 Bayfield St., Barrie  
726-0551 T 69TF

### TRUCKCAPS

We sell name brand truck caps for less. Sizes in stock to fit most trucks.

### LEISURECRAFT

Hwy. 93, Midland  
526-3129 TTF

### Le Clair Furniture

Your Home of Quality Furniture



Fine Wood Exquisite Craftsmanship

CEDAR POINTE MALL  
Dunlop St. & Hwy. 400  
Barrie 722-7522 TTF

Franklin steam boiler Model BNH 250, 295,000 BTU, complete with McDonald Miller 47-2 low water cut off. 322-2936.

48 to 51



Special  
O Henry  
Ice Cream Bars  
**40¢**

44, 46, 48, 50

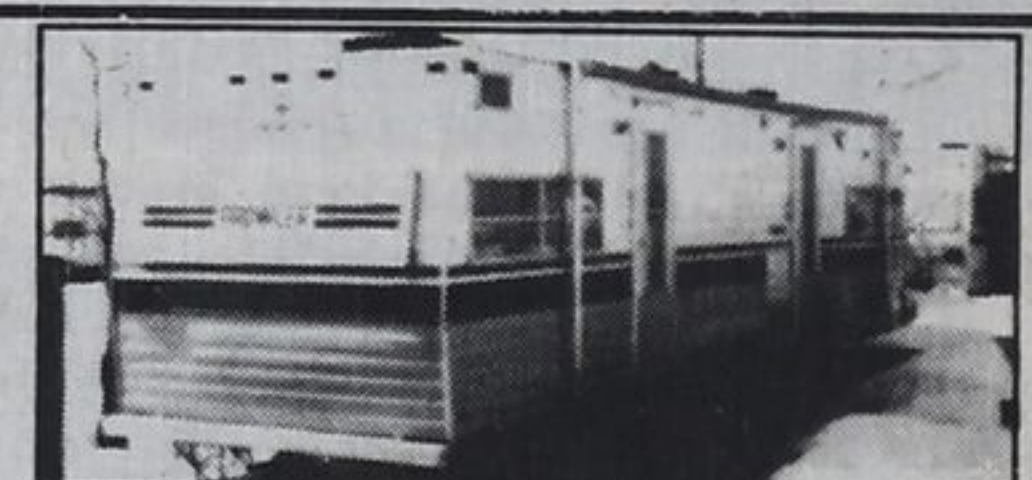
Wall-To-Wall **BROADLOOM**

### SPECIAL SALES

FREE - Shop at Home Service

Direct from Wholesaler

(705) 429-2242  
WASAGA BEACH TTF



FOR SALE - 1978 31' PROWLER  
Fully Equipped

**\$12,000** or best offer!  
Phone 686-3864

46 - 48

Registered Black Angus yearling bull. 322-1592.

P A Mixer, \$210. Phone 526-8458 after 5 p.m.

44,46,48,50

48, 49

CLARKE'S

U - PIC — WE - PIC

## STRAWBERRY FARM

Open 8 a.m. 'til 8 p.m.

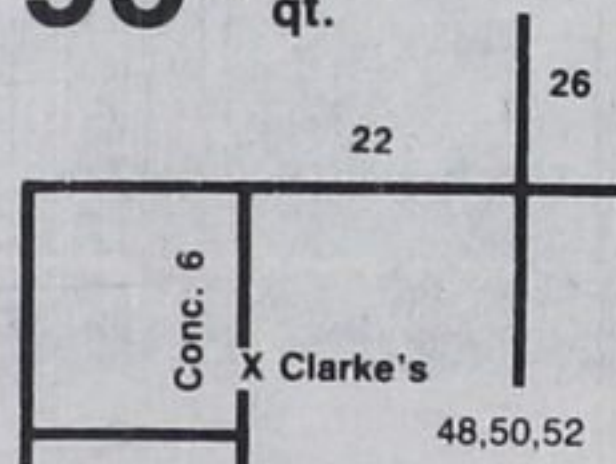
June 18 - July 15

U-PIC - **\$325** 6 qt.

WE-PIC - **95¢** qt.

For Orders  
Please telephone  
after 12 noon

**728-4369**



6 1/2 ton wagons, \$390.00 (\$35.00 rims extra), 5 types of round bale feeders starting at \$130.00. Cattle shutes with auto head gate, \$395.00 and \$495.00. 16 foot, 7 bar tube gates, \$100.00. Ross Lange, 3 miles west of Thornton, 424-5108.

48, 50, 52, 54

Pick your own strawberries - D'Aoust Farm on Balm Beach Road, Perkinsfield. 1 mile east of St. Patrick's Church, 2 1/2 miles west of Hwy. 93 from Therrien's Furniture. 526-8569. Young pickers needed.

48 to 53

### PETS & LIVESTOCK

Sheltie pups (miniature collie) home raised, CKC registered, tattooed, and shots, excellent temperament, good with children. Call 835-2756.

48, 49, 50

Registered Polled Hereford bulls R.O.P. tested gov't station. Eligible for red meat program. Orville Hill, Hillsdale, Ont. (705) 835-2401.

42, 44, 46, 48

Vespra Heights Farms offer for sale-Yorshire Boars and gilts from their large, well established herd. Duroc and Duroc York boars also available. A-1 related bloodlines. Delivery arrangements can be made. Les Morgan. 726-6074.

T21TF

### FARMERS MARKET FARMERSMARKET

#### CRIPPLED OR DISABLED CATTLE WANTED

Highest cash prices paid we also buy Horses

Call Collect (705) 737-3106

PLEASE NO DEAD ANIMALS

#### GAGE LIVESTOCK

Lic. No. 1097FP

T81TF

Crippled cattle wanted highest prices paid for disabled cattle. We also buy old horses.

ORILLIA LIVESTOCK EXCHANGE  
Call Collect  
**326-5509** TTF

K & L Farms Limited. Custom round baling with John Deere baler. 4 ft. x 4 ft. bale \$4.50; 4 ft. x 5 ft. bale \$5.00; 4 ft. x 6 ft. bale \$5.50. Call 458-4023 anytime.

47 to 50