

# Classified Market

Elmvalle Lance  
322-1871

Wasaga Times  
429-5300

AUCTION SALES

AUCTION SALES

AUCTION SALES

AUCTION SALES

AUCTION SALES

AUCTION SALES

## Marjorie Adele Contois

The late Marjorie Adele Contois of Georgian Manor, Penetanguishene, a native of Tay Township, died on May 21, 1986, in Penetanguishene General Hospital. The former Marjorie Smith was 84 years of age.

The daughter of John Smith and Matilda Busch married the late Aldred (Fred) Contois in Midland on April 25, 1923.

Her daughters Myrtle (Mrs. Bernard Hamelin) of Midland and Anne (Mrs. John Lepage) of Midland, and sisters Grace Parizeau of Port McNicoll, Minnie Bremner of Midland, and Bernice Fransden of Warton, 12 grandchildren and 19 great grandchildren, survive her.

Her brothers Herbert, Clinton, and James, and sisters Myrtle Dubeau and Anne Hebner predeceased her.

Father Tony Vander Vechte officiated at the funeral service held May 23 in Nicholls Funeral Home. Interment in St. Margaret's Cemetery.

Grandsons Brian Hamelin, Terry LePage, Randy LePage, Perry LePage, Peter Fransden, and Jim Fransden, were her pallbearers.

## Patrick Lefaive

The death occurred in Huronia District Hospital on May 1, 1986, of Perkinsfield resident Patrick Lefaive. The Perkinsfield native was 77 years of age.

A carpenter, Mr. Lefaive had been retired since 1967, the son of Joseph and Virginia Lefaive married Olga Hamelin in Midland on October 31, 1935.

His wife survives him, as do his sons Leonard of Notawaga Beach, Leo of Sorel, Quebec and Raymond of Lafontaine, daughters Elaine of Toronto, Annette (Hall) of Cawaja Beach, Lois (Irvine) of Cawaja Beach, Pauline (Lamoureux) of Penetanguishene, Linda (Desroches) of Lafontaine, and Yvette at home, sisters Margeurite Ridout of Bluewater Beach, Mary Josie of Penetanguishene, and 16 grandchildren.

His funeral mass was held May 5 in St. Patrick's Church, Perkinsfield. Interment in St. Patrick's Cemetery, Fr. V. Laurin officiated.

Grandsons, Patrick Lefaive, Stephen Lefaive, John Lefaive, Frankie Lamoureux, Pierre Desroches, and nephew and godchild Allen Hamelin, were his pallbearers.

### AUCTION SALE FOR SEBRIGHT FARMS LTD. June 14, 1986 11:00 a.m. R.R. #2, Sebright LOT 22, CONCESSION 9 DALTON TOWNSHIP

Directions: 6 miles north of Sebright, 1 mile east of Sadowa United Church, watch for signs. Sale consisting of a full line of good quality farm machinery including 2 - David Brown Tractors, 85 and 60 HP, hay bine, large round baler, trucks, tools, furniture, antiques. Watch for full listing. Everything on farm must go.

Lytle Johnstone - Auctioneer  
R.R. #4  
Coldwater, Ontario  
(705) 835-2517  
Auctioneer #52  
42, 44

### NOTICES

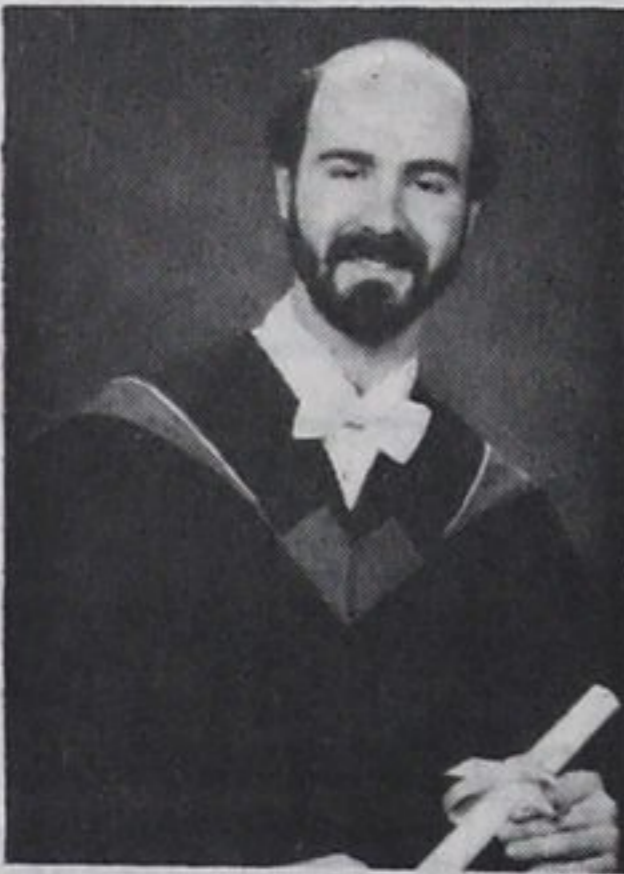
#### NOTICE TO CREDITORS AND/OR CLAIMANT

All persons having claims of any kind whatsoever against the estate of Velma Elizabeth Elliott late of the Township of Flos, in the County of Simcoe, Home-maker, Widow, who died on or about the 3rd day of December, 1985 are required to file the same with the undersigned solicitors on or before the 27th day of June, 1986 after which date the assets may be distributed among those persons entitled thereto, having regard only to those claims which have been filed.

Dated at Midland, this 22nd day of May, A.D. 1986.

Teskey, Heacock,  
Ferguson & Main  
Barristers and  
Solicitors  
Box 640, 361 King Street  
Midland, Ontario  
L4R 4P4  
Solicitors for the  
Estate of  
Velma Elizabeth Elliott  
42, 44, 46

### ANNOUNCEMENT



**Martin B. Veall, MD**  
Son of Mr. and Mrs. Brian Veall of Midland Bay Woods, Port McNicoll, has been awarded the degree of Doctor of Medicine by the Faculty of Medicine of the University of Toronto. A graduate of Midland Secondary School, Martin completed pre-medical studies at Franklin and Marshall College, Pa., on an athletic and academic scholarship and at U. of T. He will take a two year residency in comprehensive family medicine at Women's College Hospital, Toronto, in June.

42

### NOTICES

#### NOTICE TO CREDITORS AND/OR CLAIMANTS

All persons having claims against the Estate of DORIS EDWARDS, late of the Town of Midland, in the County of Simcoe, deceased, who died on or about the 31st day of March, 1986, are required to file the same with the undersigned solicitors on or before the 12th day of June, 1986, after which date the assets may be distributed among those persons entitled thereto, having regard only to those claims which have been filed.

DATED at Midland, Ontario, this 9th day of May, A.D., 1986.

HACKER, GIGNAC, RICE  
Barristers and Solicitors  
226 King Street,  
Box 518  
Midland, Ontario  
L4R 4L3

Solicitors for the Estate  
of the late Doris Ed-  
wards.

38, 40, 42

Beautify your  
neighbourhood.  
Get out  
on the street.  
Take a walk.



## AUCTION

Estate Auction Wed. June 4, at 11:30 a.m., the Thomas Aughton estate, lot 44, con. 12, Nottawasaga Twp., approx. 2 mi. west of Collingwood's Blue Mt. Mall on the Mountain Rd. and south on the blind line. Farm machinery, farm tools and all antique house furnishings inc.: Canadiana pcs. and many collectables. **Machinery:** Excellent Int #444 diesel tractor and HD hyd loader (only 1500 hrs like new), McKee Snowblower (like new), MH #35 SP combine, Allied stooker, Int #46 baler, side rake, 32' grain and bale elevator, Int 7' mower, Int 3 furrow plow, farm wagons, NH manure spreader, field sprayer, Int horse drawn seed drill, bale fork, cutting box, harrows, buzz saw, cultivator, grain augers and dryers, Gehl hammermill, 1965 Ford grain truck. **Tools:** welding bench, 2 El welders, acet. torches, compressors, water pumps, chain saws, anvil, 2 sheds full of assorted tools and farm related items, scrap iron, etc., incubator, gas mask, shell loader, 200 lb. farm scales. **Appliances:** Colour TV, fridge, stove. **Antique Furnishings:** Pine cupboards, blanket boxes, harvest table, square dining table, and 6 pressback chairs, corner cabinet w/inlay, buffet, pressback rocker, secretary, washstands, wardrobe, pine chests, dressers, brass and iron bed, child's chair c. 1800, plankbottom and assorted chairs, Duncan Phyfe table. **Collectables:** Quantity of real old glass, china, toleware, graniteware, old books, oil and gas lamps, Quebec heater, picture, prints, frames, oxen yoke, block planes plus hundreds of treasures too numerous to list. Terms Cash. Farm sold. Lunch.

Auctioneer: George Pifer  
Auction Service Ltd.  
(705) 445-4848  
42

## NOTICE RE: ASPHALT PAVING GENERAL CONTRACTING HEAVY EQUIPMENT RENTALS

- Driveways
- Parking Lots
- Tennis Courts
- Barnyards
- Additions
- Pole Barns
- Shops
- Garages, etc.

MORTGAGING AVAILABLE  
If you wish a free estimate  
call

ELMVALE 322-3366  
BARRIE 722-4621

OR

Toll Free 1-800-461-9692

All work guaranteed by  
A.J. POSITANO INC.  
R.R. #2, Elmvalle, Ont. L0L 1P0

34 TTF

# Buying or Selling- We Get Results

## ARCHER COLWILL

726-8904

QUALIFIED AND RECOGNIZED  
AUTHORITY

Auctioneer • Appraiser

Farm • Furniture • Antiques  
Estates • Real Estate

Selling Successful Sales Since 1957



**Saturday, May 31 at 9 a.m. for Boyd Carroll. Directions:** Come north of Elmvalle on Hwy. 27 and take County Rd. #6 to Con. 3 Tiny Twp., turn west to the 3rd farm on south side. **Farm Machinery:** Leland diesel tractor #344 with K loader and dual hydraulic bucket, Leland diesel tractor #384 - 75 H.P., David Brown 4x14" 3 P.H. plow, 3x10' 3 P.H. plow, Ford tandem wheel discs 44 plate, Int. 9' cultivator, 5 sec. seed harrows, N.H. #275 baler/thrower, N.H. #510 manure spreader, McKee snow lander 7' blower, J.D. hammer mill w/belt, Baltimatic fert. and seed distributor 3 P.H., Owatonna 25 swather w/crimper 10' S.P., model P282 windrow turner, 36' hay and grain elevator w/motor, 34' open elevator on wheels w/motor, N.H. forage blower, wheel rake, Cockshutt side delivery rake, 2 bale forks, 6' grader blade 3 P.H., 2 wheel trailer, 3 hay box wagons, Shell 150 cattle oiler, Hough loader (parts), 20' N.H. bale elevator, 2 sets heavy sleighs and platform, 3 round bale feeders, 200 gal. galvanized water tank, 2 sets heavy team work harness, 6 horse collars 21" - 24", 3 sets driving harness, set of single milk wagon harness, 2 western saddles, Jawn wood splitter 3 P.H., 2-14" chain saws, Pioneer 20" chain saw, 2 new aluminum window sashes, 1971 Courier 1/2 ton pickup (as is), torch cart, qty. galv. piping, pair of Scotch collars, dog muzzles, saddle bags, hacamores, shoeing apron, stove pipe chaps, bits, barn fogger, new sweat pads, double trees, wheel barrows, horse drawn cutter, Lincoln 180 arc welder w/cables, Curtiss air compressor, set welding torches, electric grinders, scales, saws, barn jack, fan w/humidistat, chains, milk scales, antique balance scales, single and double piston Duro pumps, 3 copper fire extinguishers, pr. coach lamps, qty. of bolts and nails, old tools, 4 H.P. roto tiller M.T.O., 2 power lawn mowers, dog house, cane back rocker, chesterfield suite, qty. of household items. Terms cash or cheque w/identification. Selling by numbers, please register. Lunch available.

**Saturday, June 7 at 10 a.m. for Oscar Phillips, 268 Victoria St., Alliston.** Sale of all furniture, appliances, china, glass, quilts, bedding, tools, a quality sale.

**Saturday, June 14 at 10 a.m. for estate of Beverley Cooke at lot 1, con. 6 Medonte Twp.** Located on Horseshoe Valley Rd., approx. 2 km east of the ski resort. Sale of antique and collectables farm machinery and tools dating to 1855. Scenic 100 acre property will sell subject to a reasonable reserve bid. Terms \$7,500.00 by cash or certified cheque day of sale. Balance on closing.

42

## ARCHER COLWILL

726-8904

QUALIFIED AND RECOGNIZED  
AUTHORITY

Auctioneer • Appraiser

FARM • FURNITURE • ANTIQUES  
ESTATES • REAL ESTATE

Selling Successful Sales  
since 1957



**Auction Sale, Tuesday evening, June 3 at 6 p.m. for August De Kleyne at lot 7, con. 8, Vespra Twp. Directions:** farm is located approx. 10 miles N.W. of Barrie. Take Hwy. 26 to Golf Course Road, turn north 1/2 mile or from County Road 22, come 1 1/2 miles south. Sale of farm machinery and collectables. **Machinery:** Ford 3000 diesel tractor w/Freeman loader, Ford 8 N tractor reconditioned, Ford 3 furrow plow, J.D. 8' tandem discs, 10' cultivator, 13 disc seed drill, 2 furrow Ferguson plow, 2 wheel wagon w/rack, N.H. manure spreader, 3 P.H. grader blade 6', N.H. 268 hayliner baler, N.H. hay crimper, 3 P.H. rotary hay rake, hay stooker, bale fork, Ford 7' mower 3 P.H., 30' open hay elevator, 18' grain auger, 2 gas tanks 200 gal. cap., 3 rolls snow fence, milk tank, 12 Beatty pig pens 5'x15', qty. of water bowls and feeders, corner for stable cleaner, large Fairbanks portable engine, 3 smaller Fairbanks portable engines collector items, wheel barrow, barbecue, Simplicity wringer washer, qty. of small items. Lunch available. Terms cash or cheque w/identification.

**Saturday, June 21 at 10 a.m. for Wallace McConnell in Elmvalle.** Sale of entire household contents.

42