



### What's the message?

Ivy Day exits the Midland town hall last Saturday, after voting at the advance poll, with the help of her son, incumbent Reeve Bev Day. Day said

he understood the turnout was higher than normal. "The voters are sending a message, but I don't know what it is," he said.

## Art Argue cites past career in public sector

Art Argue, age 62, is a candidate for the office of Deputy Reeve for the Town of Midland.

He has been employed for the greater part of his life in the public sector with various provincial ministries.

He has also served as a municipal Clerk-Treasurer.



As reeve of Midland he was chairman of finance committee and also served on the finance committee of County Council.

Argue served five years in the Canadian Army.

"The key issues as I see them are: to restore council credibility; to control spending;

pursue industrial growth; to have open council and committee meeting; improve partisan biases and replace all of these with plain common-sense that would work for the betterment of the town would quickly establish the council that the people of Midland have

very right to expect.

"Having established council credibility, resolving the other issues could quickly prove. As your deputy-reeve, I would dedicate my endeavors to these accomplishments." public access to town services; oppose annexation; repeal nuisance bylaws, he says.

"I believe that if the incoming council can immediately establish itself as a group that is willing to work together they will go a long way to gain the public confidence that is so sadly lacking. This should not be too hard to do; a little less ego, willingness to forego

## Three-year terms are just too long?

Running for office has become a serious business.

However, the biggest complaint this newspaper has heard to date has had nothing to do with the men and

women who have offered their names to stand for election but the term of office they are required to serve.

For the second election in a row, voters

will be going to the polls to elect candidates for a three-year, not a two-year, term.

The general consensus as expressed to this newspaper by a

number of ratepayers is, "A two-year term was just right. A candidate had time to get his feet wet during the first year and the second year afforded voters a chance to decide if they wanted him back in office again. A three-year term is just too darn long."

## MUNICIPAL ELECTION UPDATE '85

### Fabric & Blinds

SAVINGS from **20%-30%**

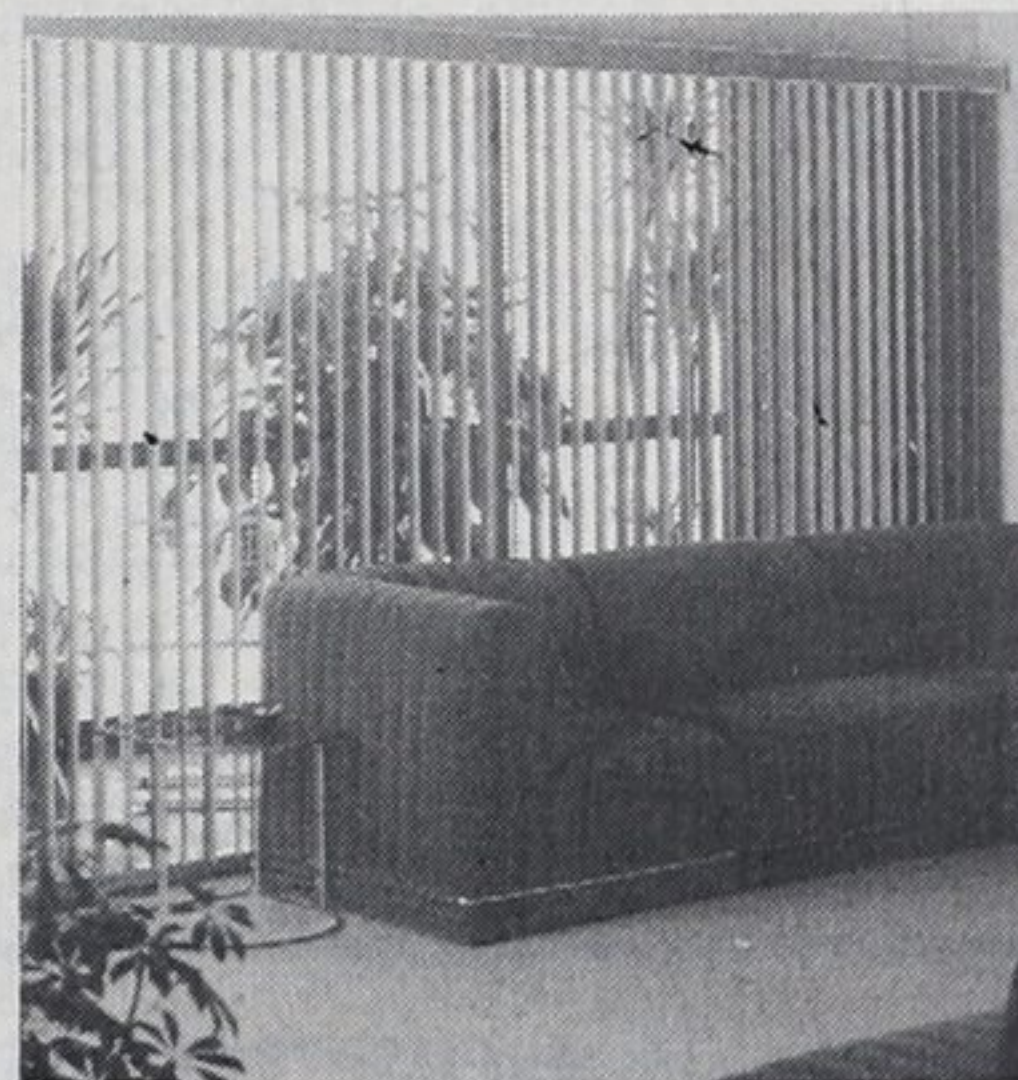
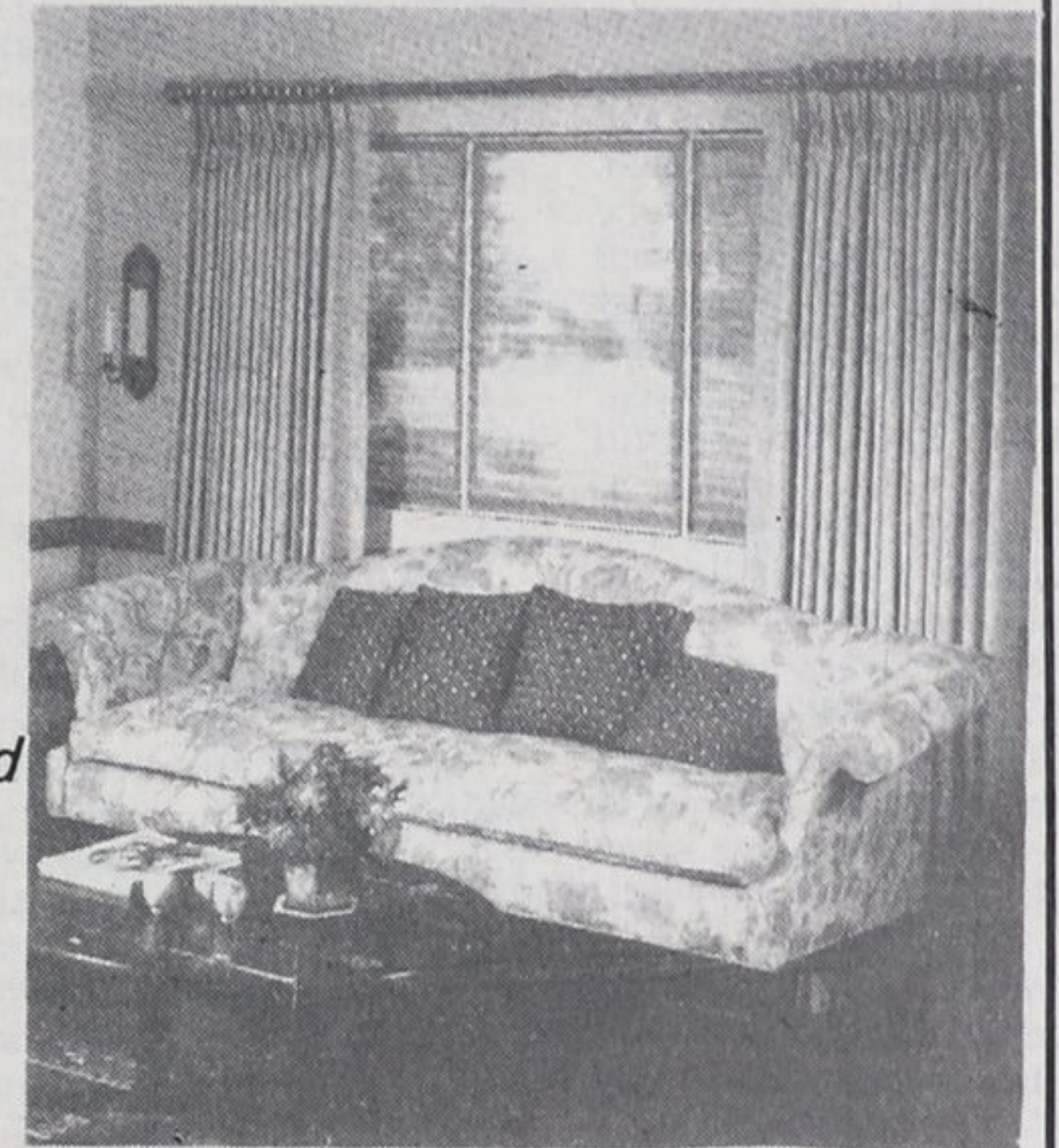
\* *Includes FREE INSTALLATION on all Window Coverings!*

CUSTOM-MADE DRAPERIES & CUSTOM REUPHOLSTERY

**20% OFF DECORATOR FABRICS**

Now you can save on re-upholstered furniture and beautiful custom-made draperies

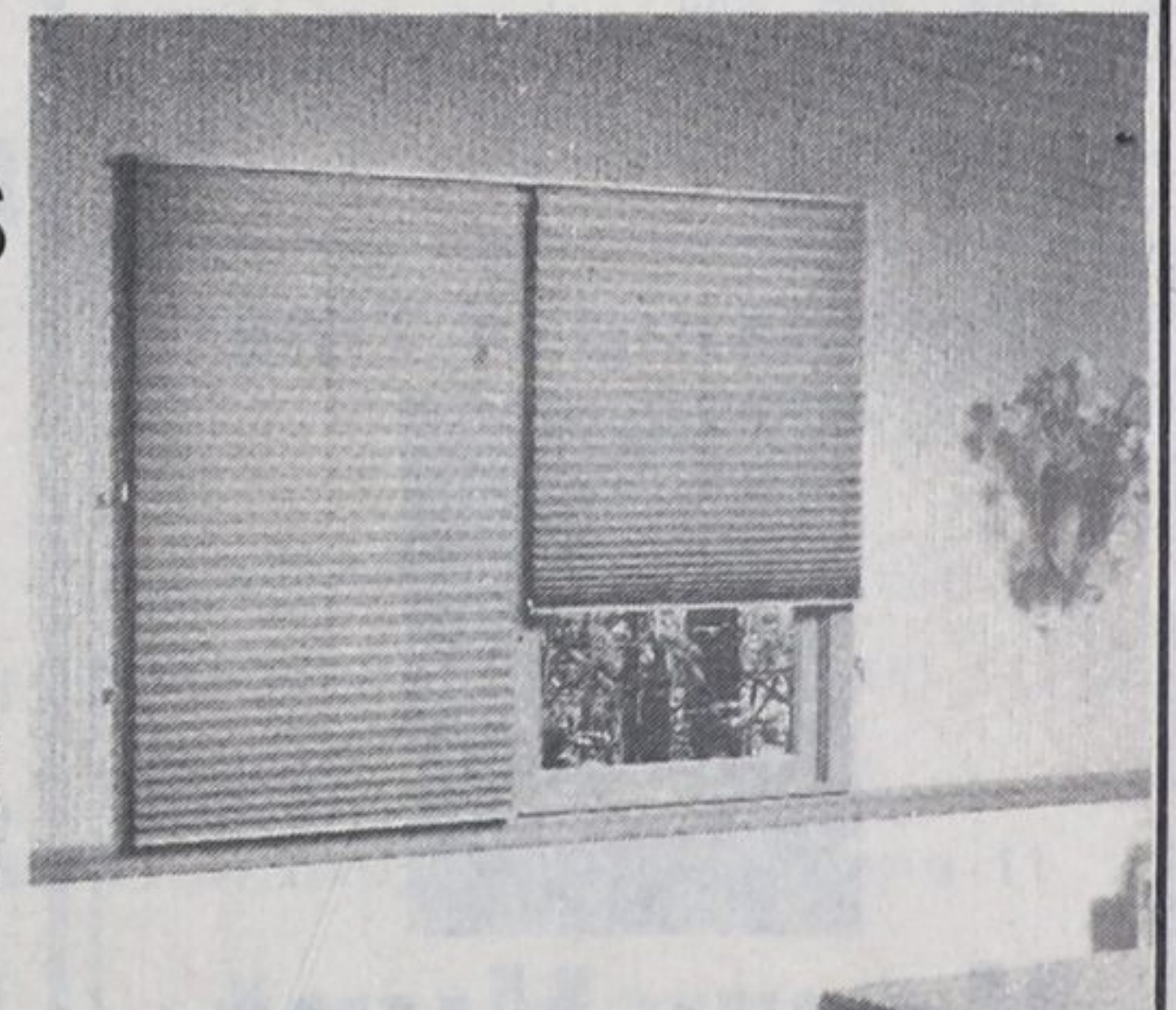
All draperies and upholstery will be expertly done in our own work rooms by knowledgeable people with many years experience.



CUSTOM VERTICAL & VENETIAN BLINDS

**30% OFF**

Kirsh, Mar-del, Draco & North Toronto offer a variety of exclusive fabric patterns and colors which will enhance any home.



• PLEATED SHADES

**25% OFF**

Pleated shades are problem solvers. This high-style treatment dresses up the toughest types of windows. All shades come in a range of up-to-date fashion colors planned for coordination.

**FREE** Shop-At-Home Service & Decorating Consultation & Estimates with no obligation

**Partners** LINENS, DRAPERY, AND UPHOLSTERY PUTTING IT ALL TOGETHER

**EDWARDS FLOOR FASHIONS**

293 King St., Midland  
Phone 526-2271 or 526-3382

**THANK YOU FOR YOUR SUPPORT & ENCOURAGEMENT THE PAST 3 YEARS**

I encourage you to please...

**RE-ELECT AL ROACH MAYOR**



- Resident of Midland the past 40 years
- World War II Veteran-R.C.A.F.
- Has proven record in business and Municipal Office

**RE-ELECT AL ROACH**

