

Fair response from merchants on parking

Most Penetanguishene merchants in the hill section of Main Street, between Robert Street and Simcoe Street, have let the town office know they think there should be more parking spaces provided in the downtown area.

Businessman Bill Waters approached the merchants two weeks ago and asked them to consider sending a letter dealing with "the severe shortage of available parking spaces" if they agreed there was a shortage.

The merchants who responded signed their names to a letter prepared by Waters; eleven of 18 businesses signed them and sent them to the municipal office. The best response came from merchants on the east side of the street where there is angled parking.

The merchants request an increase in the budget of the Penetanguishene Parking Authority to provide sufficient downtown parking spaces. A recent downtown parking study prepared for the town finds that with the closure of the privately-owned parking lot beside the French Centre, the downtown area needs 26 new parking spaces.



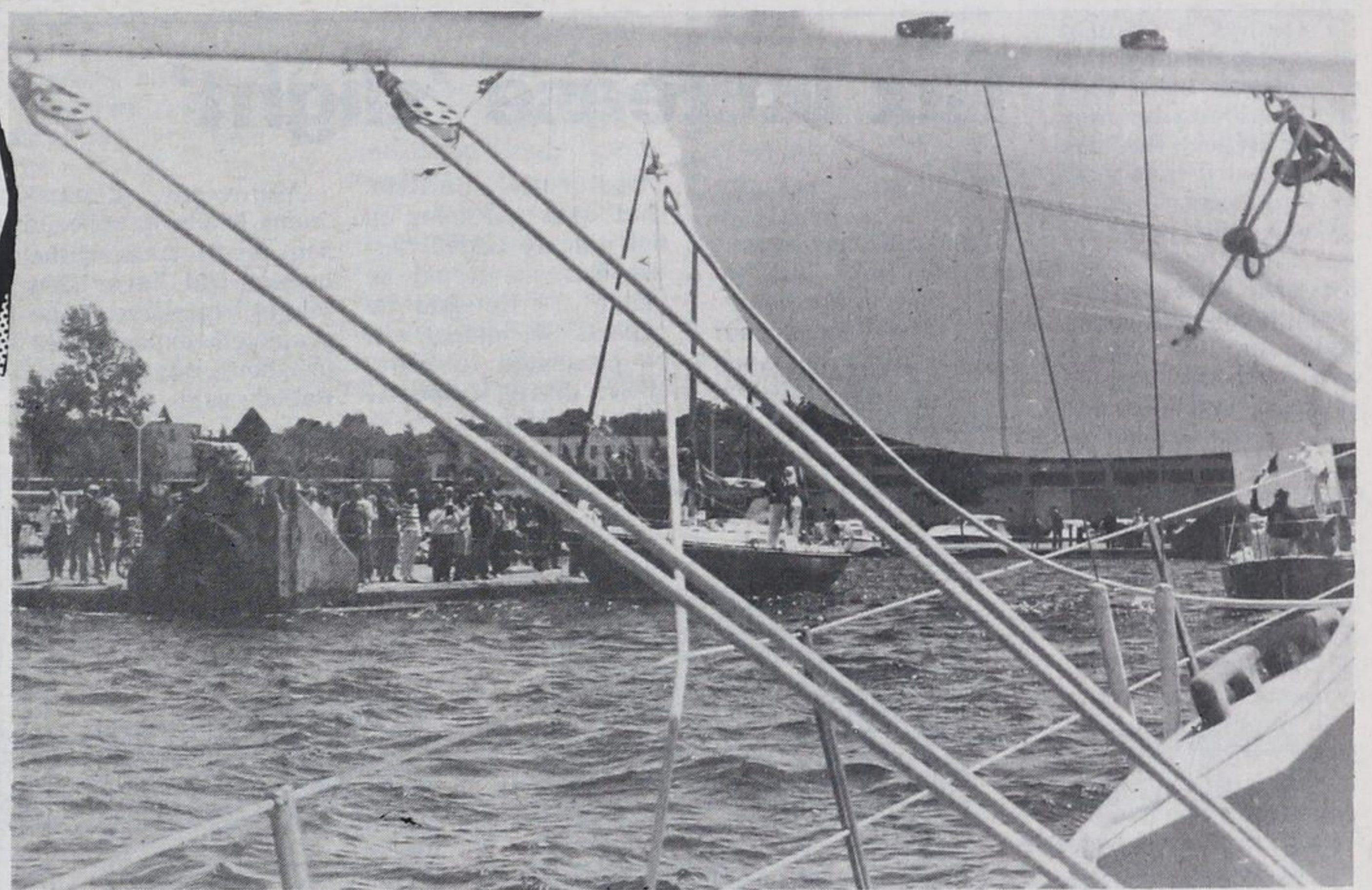
**Drying
Pathfinders**

On May 7 the First Penetang Pathfinders held their annual baseball game at St. Joseph School. The Pathfinders invited their friends to a friendly

game. The Pathfinders won the game which was played in the rain and afterwards were treated to hot dogs and drink.

More than enough wind to go around on Sunday!

To the delight of onlookers at Midland Town Dock, brisk winds created fast and exciting conditions for the Midland Bay Sailing Club's Annual Sail Past early Sunday afternoon, under brilliant blue, summery skies. This photo was taken aboard Vice-Commodore Tom Hubbard's 26 foot sailboat as it raced toward the pier to salute Sailing Club Commodore Don Skinner (standing on boat at centre).



Town wants commitment in writing, mayor says

Installation of sanitary sewers on Robert Street East and Cambridge Street won't go ahead this year as scheduled, Penetanguishene Mayor Ron Bellisle said yesterday.

The provincial environment ministry has said it will fund sewer construction on the two streets but the municipality wants to get it in writing before there's a change in government at Queen's Park, Bellisle said.

The ministry has decided to split its funding of Penetang

sewer work over two years instead of providing funding in one lump sum this year, Bellisle explained. As a result, the completion of full sewer servicing in the town will come a year later than planned.

Sewer installation will still proceed on Church Street this year as planned; tenders for work on the street, from Don Street to the Mental Health Centre, are out, Bellisle said. Construction of a new sanitary sewer plant on Fox Street is going ahead this year as well.

Once the north end work and the Robert Street work are completed, the only part of town not serviced by sanitary sewers will be a short stretch of Robert Street West between the Champlain Road and West Street.

JUNE 8

"Saturday, June 8 - A gigantic Rummage Sale will be held in All Saints Parish Hall, Peel St., Penetanguishene, commencing at 9:30 a.m. Sponsored by All Saints Anglican Church Women."

MORTGAGES For \$75

you can switch to a Sterling Trust mortgage if you get your commitment before June 30, 1985.

Call your local Sterling Trust Branch and find out how to qualify for this opportunity.

Midland: 270 King Street (705) 526-3768



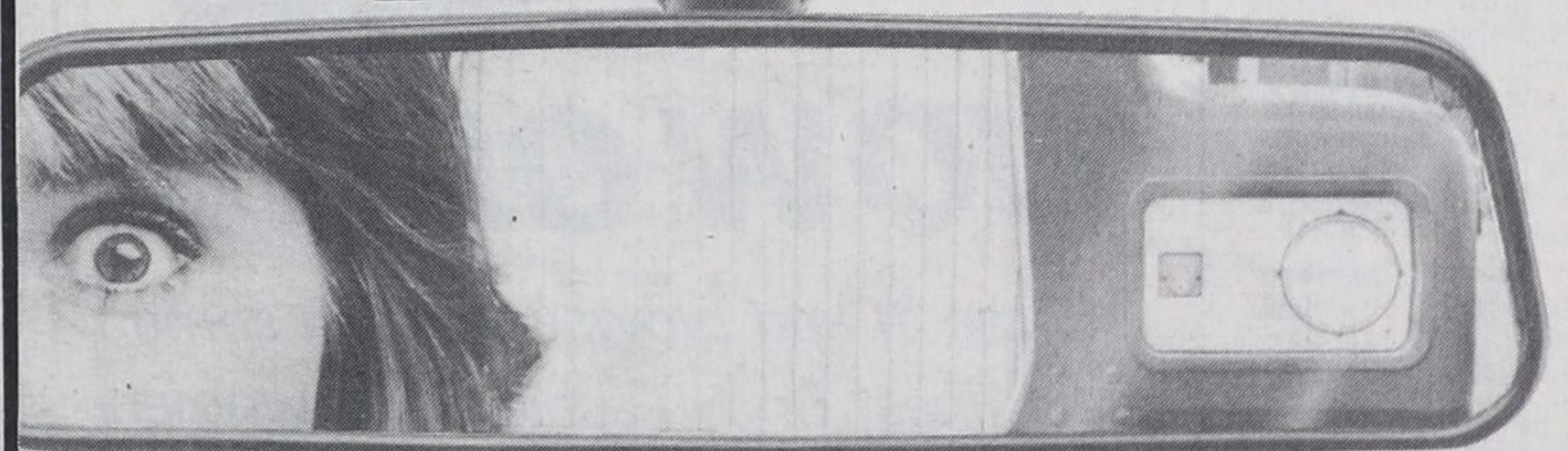
STERLING
STERLING TRUST CORPORATION

Member Canada Deposit Insurance Corporation
Member Canadian Payments Association



Young Drivers of Canada

Midland/Penetang



"HE'S NOT STOPPING"

Drive with us first and escape

- ★ YDC GRADUATES ELIGIBLE FOR UP TO 44% DISCOUNT ON AUTO INSURANCE
- ★ COURSE FEE IS INCOME TAX DEDUCTIBLE ★ VISA ACCEPTED

Next Daytime Course starts June 25th
9 a.m. - noon & 1 - 4 p.m. for 4 consecutive days

Next Evening Course starts July 2nd
Tues & Thurs 6-9 p.m. for 4 consecutive weeks

For information, brochures and course schedules call:

526-8500

Over 150,000 graduates recommend us

Young Drivers of Canada
The Leaders in Driver Training Coast to Coast

303 MIDLAND AVE., MIDLAND